

ALDERFER
AUCTION
AUCTION | APPRAISAL | DOWNSIZING



FINE & DECORATIVE ARTS AUCTION

Thursday, September 28, 2017 | 12:00 Noon

\$25

AUCTION DETAILS

Fine & Decorative Arts Auction

Thursday, September 28th at 12:00 Noon
Bid Live at Auction Center & Online

Online Only Collector's Auction

Wednesday, September 27th at 7:00PM
Bid NOW and LIVE online

Discovery Art Auction

Thursday, September 28th at 9:00AM
Bid Live at Auction Center

Applicable Buyer's Premiums Apply.

Preview:

Saturday, September 23rd from 9:00AM - 12:00 Noon
Monday, September 25th from 9:00AM – 4:00PM
Tuesday, September 26th from 9:00AM – 4:00PM
Wednesday, September 27th from 9:00AM – 4:00PM
Thursday, September 28th at 8:00AM

Inquiries:

AlderferAuction.com
FineArt@AlderferAuction.com
ConditionReport@AlderferAuction.com
215.393.3000 Phone

❖ Indicates lot is pictured in catalog.

INVITING FINE & DECORATIVE ART CONSIGNMENTS FOR DECEMBER 7TH



Like Us at @AlderferAuction

Members of: NAA & PAA; Designations CAI, MPPA & CES; USPAP Compliant.
AY002260



Collector's Auction

Wednesday, September 27th

Online Only Auction

Bid Now Through Close at 7:00PM

Offering an eclectic mix of decorations, art, jewelry, furniture and carpets with a broad appeal to the emerging and seasoned collector. This event will be sold Online Only, all items will be sold without reserve.



Discovery Art Auction

Thursday, September 28th at 9:00AM
Simulcast (Live & Online)

Over 250 works of art selling without reserve including 19th, 20th and 21st Century artists working in oil, water colors and works on paper. Many works by listed lesser known artists, works needing definitive attribution and some in need of restoration or framing.



Invitation to Consign Fine & Decorative Arts December 7, 2017

Deadline to consign is October 1, 2017.





SUBSCRIPTION INVITATION

This issue you received is free! We hope that you have enjoyed your free copy and wish to continue receiving our Fine & Decorative Art publications. We make every effort to bring you excellent high quality, four-color illustrated printed catalogs to enjoy and reference. In order to keep receiving Alderfer catalogs in the future please subscribe:

- 1 Issue (\$25.00) 3 Issues (\$22.50 per copy) 6 Issues (\$20.00 per copy)

Check enclosed or M/C Visa _____ Exp date _____

Phone _____ Email _____ Signature _____

Please send payment to: Alderfer Auction, 501 Fairgrounds Rd., Hatfield, PA 19440.

Please note that a free online digital copy of our catalogs will be available at www.AlderferAuction.com two weeks prior to auction. Complete and mail to: 501 Fairgrounds Rd., Hatfield, PA 19440, or scan and email to Kirsten@AlderferAuction.com.

Prices valid until December 31, 2017

Alderfer Auction has built a reputation for ethically and creatively helping people through life's transitions. Whether buying or selling a collection or personal property, furnishing or downsizing a home or business, Alderfer Auction will find solutions that work for you. Alderfer combines the skillful knowledge of experts on antiques, fine art and collectibles, as well as specialty items. With over a half century of experience in promoting auctions, we not only know the marketplace we know how to reach buyers regionally and internationally, to create awareness and ultimately resulting in successful auction sales for our consigners.

We are conveniently located in the suburbs of Philadelphia between New York and Baltimore. As you pull into 501 Fairgrounds road, we have ample parking for our customers. This safe and secure 8,500 square-foot building draws bidders regionally and from across state lines. We look forward to seeing you!

WWW.ALDERFERAUCTION.COM

501 FAIRGROUNDS RD., HATFIELD, PA

ALDERFERAUCTION.COM

215.393.3000

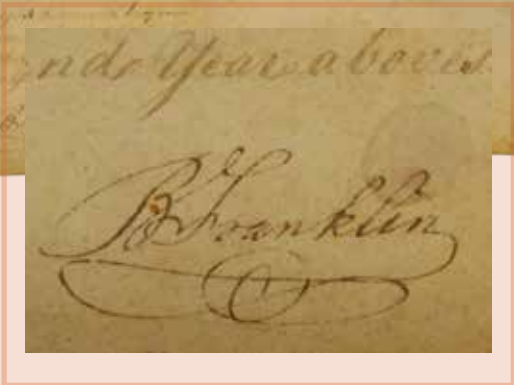


❖ 3001

Autograph of Benjamin Franklin

Pennsylvania indenture dated December 28, 1762 for 60 acres of land in New Providence, Philadelphia County, Pennsylvania and signed by Benjamin Franklin as Justice on February 2, 1763. Benjamin Franklin (1706-1790) Signer of the Declaration of Independence, Signer of the United States Constitution, considered a Founding Father of the United States, author, printer, politician, scientist, and diplomat. Vellum document measures 17" x 25" and exhibits folds, center stain measuring 4.5" x 3" and some fading to ink. The Benjamin Franklin signature is strong with good contrast.

3000 – 5000



3002

Autograph of Edmund Physick

Pennsylvania indenture dated March 31, 1798 for 277 acres in Mount Joy/Cumberland Township, York County, Pennsylvania. Vellum document measures 15" x 20.5" and is signed twice by Edmund Physick as agent to John & Richard Penn. Edmund Physick (1727-1804) Thomas Penn's clerk and agent in Pennsylvania, and eventual Receiver General and Keeper of the Great Seal of the Province of Pennsylvania. Document exhibits some toning and folds.

150 – 250

3003

Autograph of President Benjamin Harrison

ADS being a postmaster appointment for George C. Kessler for Short Hills, Essex County, New Jersey dated August 3, 1892 signed by President Benjamin Harrison (1833-1901) American politician and lawyer who served as the 23rd President of the United States from 1889 to 1893. Framed document measures 14" x 16.25" (sight) and is housed in frame measuring 19" x 21". Document exhibits toning with a 2" vertical tear at top left and at right, and a 4" closed tear at right border. All tears are away from signature.

300 – 500

HISTORICAL

❖ 3004

Autograph of Theodore Roosevelt

ADS being a postmaster appointment for George C. Kessler for Millburn, Essex County, New Jersey dated January 13, 1908 signed by President Theodore Roosevelt (1858-1919) American statesman, naturalist, explorer, soldier, who served as the 26th President of the United States from 1901 to 1909. Framed document measures 13.75" x 16.25" (sight) and is housed in frame measuring 19" x 21". Document exhibits light toning.

400 – 600

3005

Autograph of J. Edgar Hoover

TLS of J. Edgar Hoover (1895- 1972) first Director of the Federal Bureau of Investigation (FBI). Letter on FBI letterhead dated August 5, 1941 to Martha Clark of Long Beach, California regarding information sent to the FBI by Clark. Letter measures 10.5" x 8" and is accompanied by original mailing envelope.

100 – 200

❖ 3006

Civil War Presentation Sword-KIA 9th PA Cavalry

Civil War presentation staff & field sword manufactured by W. Clauberg of Solingen. Sword measures 40" (34" blade) and exhibits gilded bronze mounts with center silver inset medallions displaying images of Liberty/Columbia. Top mount on throat is missing. Grip of sword is silver and exhibits finely engraved eagle. Ricasso of blade presents etching "WH Horstmann & Sons, Philadelphia". Blade features patriotic motif with presentation "Presented to Capt. H.W. McCullough Dec 13th 1862" (obverse) and "By the members of his Co. I Lochiel Cavalry, 9th PA Vols." (reverse). Guard of sword exhibits a slight bend. Rings on sword exhibit remnants of sword knot. Hugh W. McCullough was commissioned as Captain of company I, 9th Pennsylvania Cavalry on December 10, 1861. Captain Hugh W. McCullough was killed in action near Tompkinsville, Kentucky on June 6, 1862 in action against a group of Jayhawkers. The discrepancy regarding the date of presentation vs. McCullough's death is theorized to be that the etcher at Horstmann's may have mistakenly placed a 1862 date vs. an 1861 date.

4000 – 6000



3007

Pair of 19th Century Naval Cutlasses

Pair of iron -hilted naval cutlasses from the 19th century including; 1.) Cutlass measuring 34.5" (29" blade), unmarked, with flat pommel. Cutlass exhibits some light rusting. 2.) Cutlass measuring 31.5" (25.5" blade), blade marked "WD" with arrow, "2/79" and several other undecipherable marks, with raised pommel. Cutlass exhibits some light rusting.

200 – 300

3008

Civil War Cartridge Box

American Civil War cartridge box marked "M. Metzger, Phila." and "H.H. Hartzell, Sub Inspector, US Ord Dept." Box presents original tins with a newer internal tab, Cartridge box exhibits some dryness with flaking. Sold with Civil War cap box, unmarked lacking wool and pick that also exhibits some dryness.

200 – 300



3009

Nineteenth Century Cartridge Box

Leather cartridge box with interior presenting wood block with 20 holes to hold cartridges. Flap on box exhibits light (unidentified) stamping. Box exhibits some dryness.

200 – 300

3010

Civil War Cartridge Box, Belt, Cross Belt and Cap Box

American Civil War cartridge box with cross belt presenting eagle plate. Attached belt presents "US" belt plate and a cap box containing several original Minie balls. Cartridge box exhibits one detached strap with cross belt showing one break. Leather exhibits some dryness.

300 – 500

3011

Civil War General George Meade Autograph

Autograph of George Meade (1815-1872) Union general, Victor of Gettysburg, career United States Army officer and civil engineer involved in the coastal construction of several lighthouses. Sheet (8" x 5") signed "Very Truly Yours, Geo. G. Meade, Maj. Gen. USA, HqQtrs Mil Div Atlantic, Phila Nov 2, 1865". Autograph framed with engraving of Meade. Frame measures 10" x 13"

150 – 250

3012

Civil War General Fitzhugh Lee Autograph

Autograph of Fitzhugh Lee (1835-1905) Nephew of Robert E. Lee, Confederate cavalry general in the American Civil War, the 40th Governor of Virginia, diplomat, and United States Army general in the Spanish-American War. Card (2.5" x 4.25") signed "Fitzhugh Lee, Virginia". Autograph framed with image of Lee and reproduction CSA officers hat insignia. Frame measures 11.5" x 13.25"

150 – 250

3013

Civil War General Henry Warner Slocum Autograph

Autograph of Henry Warner Slocum (1827- 1894), Union general during the American Civil War and later served in the United States House of Representatives from New York. Clip signature (1.5" x 4") signed "H.W. Slocum, Maj Gen Vols". Autograph framed with bust view CDV of Slocum and reproduction major general's shoulder strap. Frame measures 11.5" x 15"

150 – 250



3006



3014

Civil War General Gouverneur Kemble Warren Autograph

Autograph of Gouverneur Kemble Warren (1830-1882) was a civil engineer and Union Army general during the American Civil War. Clip signature (3.25" x 3.5") signed "Headquarters, 5th Army Corps, Dec 26, 1864, Respectfully forwarded and approved G.K. Warren, Maj. Gen. Vols.". Autograph framed with reproduction image of Warren and reproduction US Officers hat insignia. Frame measures 11.5" x 12"

150 – 250

❖ 3015

Tintype of Civil War Soldiers

Quarter-plate tintype of Union Civil War soldiers showing three full standing uniformed soldiers wearing kepis or slouch hats. Interior of case features ink inscription "Mr. John Wilson, Mr. D.G. Fuld, Mr. G.M. Felt, Taken when in the service of the U.S.". Image is housed in case with split hinge and some damage to rails.

400 – 600



3016

CDV Album-Civil War

CDV album containing numerous civilian images and three Civil War military related images of; 1.) Bust view of officer with signature on mount "John B. Gourch", 2.) Civilian bust view signed "John R. Converse" with pencil inscription "KIA Petersburg, VA 1864", 3.) Civilian bust view with pencil ID "Henry A. Eaton, Lt.61, KIA Petersburg Sept 30, 1864. Both Converse and Eaton graduated Middlebury College in 1862. John Rollin Converse (1842-1864), Private, Co. I, 14th Infantry; Second Lieutenant, Co. H, Seventeenth Regiment, Vermont Volunteers, killed in action before Petersburg, VA, 30 Jul 1864. Henry Augustus Eaton (1838-1864), Captain, Sixteenth Regiment, Vermont Volunteers, wounded severely at Gettysburg, 3 Jul 1863; Captain, Co. D, later Major and Lieutenant-Colonel, Seventeenth Regiment, Vermont Volunteers, killed in action before Petersburg, VA, 30 Sep 1864.

200 – 300

HISTORICAL

3017

Grouping of Civil War Photography

Grouping of American Civil War photography including; 1.) ninth-plate oval uncased tintype of a bust view of a Union captain. 2.) sixth-plate cased tintype of a bust view of Union soldier wearing coat and plaid shirt. Tintype is cased with no cover glass and exhibits some light surface abrasions. 3.) sixth-plate tintype (in half case) of a Union soldier wearing a 4-button sack coat and a bummer's hat.

200 – 300

3018

CDV of General John C. Buford

Carte de visite photograph of Civil War general John Buford, Jr. (1826-1863) by Brady, Washington D.C.. Image shows a bust view of Buford wearing the uniform of a brigadier general.

100 – 200

3019

CDV of General Winfield Scott Hancock

Carte de visite photograph of Civil War general Winfield Scott Hancock (1824-1886) by Brady/Anthony, New York. Image shows a standing knees up view of Hancock wearing the uniform of a brigadier general.

100 – 200

3020

Grouping of CDV's of Civil War Generals and Civil War Governor

Grouping of three carte de visite photographs of Civil War generals including; 1.) General George Sykes (1822-1880) by Addis, Washington D.C.. Image shows a bust view of Sykes wearing the uniform of a brigadier general. 2.) General George B. McClellan (1826-1885) by Frederick, New York. Image shows a waist up seated view of McClellan wearing the uniform of a major general. and 3.) Governor William Sprague IV (1830-1915) with backmark of Henderson, Philadelphia. Image shows a waist up seated view of Sprague wearing cloak over uniform.

100 – 200

3021

Grouping of Civil War CDV's of Officers-Norristown PA

Grouping of four carte de visite photographs of Civil War officers including; 1.) Full standing view of a lieutenant by Lenzi. 2.) Full standing view of a major/Lt. colonel holding sword by Lenzi. 3.) Bust view of lieutenant by Stroud. 4.) Bust view of lieutenant by Stroud. Both Lenzi and Stroud ran photographic studios in Norristown, Pennsylvania where several Pennsylvania regiments were raised.

150 – 250

3022

Grouping of CDV's of Civil War Generals

Grouping of five carte de visite photographs of Civil War generals including 1.) Unidentified brigadier general in a standing, knees up view with Clafin, Worcester, Massachusetts backmark. 2) Grouping of 4 CDV's of engravings of Generals Meade, Kilpatrick, Sheridan, and Ewell. Only CDV of Ewell presents backmark (Appleton, NY).

100 – 150

3023

Grouping of Civil War CDV's of Officers

Grouping of four carte de visite photographs of Civil War officers including; 1.) Bust view of a captain by Critcherson, Worcester, Mass. 2.) Bust view of a lieutenant by Case & Getchell, Boston. 3.) Full standing view of a major/Lt.col. With no backmark. 4.) Seated knees up view of a lieutenant by Brady, Washington DC.

100 – 200

3024

Grouping of Civil War CDV's of Soldiers and Officers

Grouping of four carte de visite photographs of Civil War soldiers and officers including; 1.) Bust view of a young cadet wearing kepi with "NHC" by Hipple of Philadelphia. 2.) Full standing view of an officer with no backmark. 3.) Full standing view of a lieutenant by Stavoren's, Nashville, Tennessee. 4.) Standing knees up view of sergeant holding sword by Leaman, Reading PA (post-war copy, light contrast with broken corner.

100 – 150

3025

CDV of 7th NJ Infantry Officer-KIA

Carte De visite photograph of a standing knees up view of Lieutenant Michael Mullery, an lieutenant and adjutant of the 7th New Jersey Infantry. CDV presents front photographers mark of Brady, Washington DC. Reverse of carte exhibits Mullery's signature and full battle record in manuscript in up to Fredericksburg in December 1862. Mullery would serve in company K and eventually by promoted to captain of Company I of the 7th New Jersey Infantry and by killed in action near Petersburg, Virginia on June 16, 1864. Ink on reverse exhibits some fading in areas.

200 – 300

3026

CDV of Civil War Connecticut Soldier

Carte de visite photograph of a full standing view of an unidentified Civil War soldier in full uniform. CDV presents no backmark. In ink on front of carte is written "Company C 2nd Connecticut Regiment".

60 – 80

3027

Albumin photograph of Civil War General Napoleon Dana

Carte de visite sized albumin photograph of Civil War General Napoleon Jackson Tecumseh Dana (1822-1905) by unknown photographer mounted on 11" x 7.5" sheet. Image shows a standing knees up view of Dana wearing the uniform of a brigadier general.

60 – 80

3028

Autographs of Civil War Generals Webb, Gregg, and Rosecrans

Grouping of three autographs of Civil War Generals including; 1.) Clipped autograph of Alexander Stewart Webb (1835-1911) Civil War general at Gettysburg. Clip measures 1" x 4" and is signed "Alexdr S. Webb, Brig. Genl, U.S. Vols.". 2.) Clipped autograph of David McMurtrie Gregg (1833-1916) Civil War general. Clip measures 1.25" x 3" and is signed "Yours Respectfully D.McM. Gregg, Brig Gen Vols.". 3.) Autographed card by William Starke Rosecrans (1819-1898) Civil War general, inventor, and politician. Card (2.4" x 4") is signed "W.S. Rosecrans Bvt Majr Genl USA". Card is accompanied by original transmitting envelope cancelled Washington DC 1888.

150 – 250

3029

Autographs of Civil War Generals Stone, Ingalls, and Hunt

Grouping of three autographs of Civil War Generals including; 1.) Clipped autograph of Roy Stone (1836-1905) Civil War general at Gettysburg. Clip measures 2.25" x 3.75" and is signed " Hd. Qtrs, 2nd Brig, 3rd Div, March 8, 1863, Approved and respectfully forwarded, Roy Stone, Col, 149 PV Cmdg 2nd Brig, 3rd Div, 1st AC". 2.) Clipped autograph of Rufus Ingalls (1818-1893) Civil War general. Clip measures 2.5" x 4.5" and is signed "Rufus Ingalls, Col. Asst Qtr Mst Genl, Bvt Maj Genl.". 3.) Clipped autograph of Henry Jackson Hunt (1819- 1889) Civil War general at Gettysburg. Clip measures 2.5" x 5" is signed "very truly yours, Henry J. Hunt, Bvt Major General USA".

150 – 250

3030

Autographs of Civil War Generals Ames and Wadsworth with Civil War Related Currency

Grouping of two autographs of Civil War Generals including; 1.) Clipped autograph of Adelbert Ames (1835- 1933) Civil War general. Clip measures 2.5" x 5" and is signed " A. Ames, Bvt. Maj. Genl". 2.) Clipped autograph of James Samuel Wadsworth (1807-1864) Civil War general killed at the battle of the Wilderness. Clip measures 1.25" x 5" and is signed "Approved Js. S. Wadsworth, Brig Genl Comdg Division Aprl 1863". Sold with uncirculated unissued (no signatures) one dollar note issued by the bank of Montgomery County, Pennsylvania on January 2, 1865. Note measures 3" x 7.25" and features vignette portraits of Montgomery County's native officers from the Civil War; General Adam Slemmer, General Winfield Hancock, General Hartranft, Colonel Edwin Schall.

200 – 250

3031

Army Register Signed and Owned by General Alexander Webb

Autograph of Alexander Stewart Webb (1835-1911) Civil War General at Gettysburg. Autograph is a signed ownership of paper covered book "Official Army Register for 1865" published by the Adjutant General's Office in Washington D.C.. Top of front cover signed "Alex S. Webb, U.S. Army" Paper cover of booklet exhibits some browning and slight chipping. Booklet measures 7.75" x 5.5". Sold with period engraving of Webb.

200 – 400

3032

Autographs of Confederate Civil War General Kemper and Major Butler

Grouping of two autographs of Confederate Civil War Officers including; 1.) Document autographed by James Lawson Kemper (1823-1895) Confederate general (wounded at Pickett's Charge, Gettysburg) and the 37th Governor of Virginia. Document measures 12" x 9" being a appointment of James M. Daniel for Notary Public of Fauquier County Virginia, signed by Kemper as Governor and dated January 31, 1877. 2.) Document autographed by A.P. Butler (1826-1902) commanding officer of the 1st South Carolina infantry. Document being a Confederate Special Requisition for Quartermaster Stores needed by Company H, 1st South Carolina Volunteers, signed by Butler as commander and dated the 2nd quarter of 1864. Document measures 8.5" x 11".

200 – 300

3033

Civil War Documents

Grouping of Civil War documents including; 1.) Board of Survey document dated December of 1864 related to Enfield muskets owned by the 6th Connecticut infantry. 2.) Inspection of equipment document dated December of 1862 related to saddles and harness owned by the 1st light battery of Connecticut volunteers in Beaufort, South Carolina. 3.) Manuscript circular regarding filing of returns related to casualties of the Brigade dated Morris Island, South Carolina Sept 26, 1863. 4.) Copy of telegraph to Major General Thomas regarding troop movements. Telegraph sent by General John C. Starkweather and dated October 13, 1864.

100 – 200

3034

Civil War Documents Related to 72nd Pennsylvania Infantry

Pair of Civil War documents related to the 72nd Pennsylvania Infantry (Baxter's Fire Zouaves) including; 1.) Muster roll for Company B, 72nd PVI dated August 18, 1862 listing 73 officers and men of that company including many wounded at Savage Station. Document measures 21" x 30" and is signed by Captain Francis McBride as company commander. McBride was discharged on March 27, 1863, for wounds received in action. 2.) Manuscript copy of Special Order No.3 related to promotion of Frederick Boland to lieutenant in the 72nd Pennsylvania infantry. Document measures 6.25" x 8" and is signed by James Sutherland as adjutant.

100 – 150

3035

Civil War Muster Out Roll-5th PA Reserves

Muster-out roll for Company E, 5th Pennsylvania Reserve Infantry listing 95 soldiers noting many wounded and killed at Fredericksburg and Antietam. No date listed but 1864. Document measures 21" x 31.5" and is double sided framed.

100 – 200

HISTORICAL

3036

Grouping of Civil War CDV's and Letters

Grouping of Civil War items including; 1) CDV of a bust view of Colonel W.W.H. Davis (104th Pennsylvania Infantry) signed on obverse. CDV presents backmark of Gutekunst, Philadelphia. 2.) CDV of bust view engraving of General W.T. Sherman. 3.) Soldiers letter in pencil, 4pp, from John H. McMullen, dated Camp Near Culpepper, Va, Sept 25, 1863. Newsy letter regarding election of Governor Curtin. 4.) Soldiers letter in pencil, 4pp, from John H. McMullen, dated Camp Camp at Warrenton, Virginia, August 18, 1863. Newsy letter with some passages regarding military organization.

200 – 300

3037

Grouping of Civil War Related Autographs

Grouping of Civil War related autographs including clip signatures; 1.) Montgomery Cunningham Meigs (1816-1892) Quartermaster General of the U.S. Army during Civil War. 2.) John Pope (1822-1892) Civil War General. Balance of autographs are on filled out subscription requests for the Lippincott book "From Manassas to Appomattox" including 1.) George Sears Greene (1801-1899) Civil engineer and Civil War General, 2.) Fitz John Porter (1822-1901) Civil War General, 3.) George Duryea (1832-1897) Civil War officer of the 5th New York Infantry and brother of Gen. Hiram Duryea. 4.) George Meade Jr. (1843-1897) Civil War officer and son of General George Meade. 5.) Robert Todd Lincoln (1843-1926) American politician and son of President Abraham Lincoln.

150 – 250

3038

Autograph of Henry Ward Beecher

ANS, 1pp of Henry Ward Beecher (1813-1887) American clergyman, social reformer, and abolitionist. Letter dated Lippincott Publishing, May 29, 1883 to Henry Ward Beecher regarding the use of part of one of Beecher's sermon in a future book. Beecher has flipped page over and written "Of course yes, Henry Ward Beecher". Letter measures 8.5" x 5.5".

100 – 200

3039

Autographs of E.I. Dupont and S.F. DuPont

Pair of DuPont family clip autographs. Autographs include; 1.) Eleuthere Irenee du Pont (1771-1834) French-American chemist and industrialist. 2.) Samuel Francis Du Pont (1803-1865) Rear Admiral in the United States Navy during the early 19th century.

150 – 250

3040

Autograph of James Longstreet

Clip signature of James Longstreet (1821-1904) famed Confederate general. Clip measures 1.75" x 8" and is accompanied by letter from a person at Lippincott Publishing sending the Longstreet autograph in 1903. Letter is accompanied by original mailing envelope.

100 – 200

3041

Autograph of George B. McClellan

ALS, 1pp of George Brinton McClellan (1826-1885) Civil War General, civil engineer, railroad executive, and politician. Letter dated Washington D.C., January 31, 1862 to Lippincott publishing regarding payment for McClellan's book. Letter measures 9.75" x 8".

100 – 150

3042

Autograph of Schuyler Colfax

ALS, 1pp of Schuyler Colfax Jr. (1823-1885) journalist, businessman, and politician and the 17th Vice President of the United States. Letter dated House of Representatives, July 8, 1868 to unknown gentleman regarding declining request to serve a position. Letter measures 8" x 5".

80 – 120



❖ 3043

Occupational Daguerreotype

Sixth-plate daguerreotype (c. late 1840's) showing a seated gentleman (knees up) holding a long rifle and wearing a hat. Daguerreotype presents original seal and exhibits one small area of tarnish at lower right.

400 – 600

3044

Early 19th century Mennonite Fractur in Hymnal/Psalm Book

Early 19th century Mennonite fractur book ownership plate for Andreas Bauer of Douglass Township, Montgomery Township, Pennsylvania dated March 3, 1827. Border designs done in blue and red surrounding text and calligraphic designs in black ink. Plate in early Mennonite hymnal/psalm book titled "Die kleine geistliche Harfe der kinder Zions, oder auserlesene geistreiche Ges-nge" printed by Michael Billmeyer, Germantown, Pennsylvania in 1820 (Arndt & Eck 2419; Shoemaker 2239). Douglass township is a small township that lies in western Montgomery County and encompasses the towns of Gilbertsville and Sassamansville. Andreas Bauer (1784-1864) is buried in the Bally Mennonite Cemetery in Bally, Pennsylvania. Book measures 6.75" x 4.5" and exhibits original binding and closing straps.

300 – 500

3045

Early 19th century Mennonite Fractur in Hymnal/Psalm Book

Early 19th century Mennonite fractur book ownership plate for Andreas Bauer of Douglass Township, Montgomery Township, Pennsylvania dated 1832. Calligraphic text is filled in red, blue and indigo dyes. Plate in book titled "Das Neue Testament unsers Herrn und Heilandes Jesu Christi; Nach der Uebersetzung Doctor Martin Luthers; Mit kurzem Inhalt eines jeden Capitals, und vollstandiger Anweisung gleicher Schriftstellen; Wie auch aller Sonn und Festtagigen Episteln und Evangelien" Published by Georg W. Mentz, Philadelphia, 1832. Douglass township is a small township that lies in western Montgomery County and encompasses the towns of Gilbertsville and Sassamansville. Andreas Bauer (1784-1864) is buried in the Bally Mennonite Cemetery in Bally, Pennsylvania. Book measures 6.75" x 4.5" and exhibits original binding that is damaged, detached and poorly repaired and loose with pages loose also

200 – 300

3048

Cased WWI Iron Cross 1st Class

German World War I Iron Cross, 1st class marked "CD800" on reverse. Cross manufactured by Carl Dillenius of Pforzheim. Cross housed in original presentation case exhibiting some bumps and scuffs to exterior. Lid of case exhibits decal of iron cross.

200 – 300

3049

Jean Roulet Le Locle Clock

Jean Roulet Le Locle desk clock, circa 1970s. It features a full calendar, gyroscope with base, zodiac images, and names of cities around the globe, all on a brushed brass body. It has Swiss movement and white face. Clock is housed in original presentation box with accompanying documentation.

200 – 400

3046

Johannes Kip Colored Engravings-18th Century Grouping of four Johannes

Kip colored engravings made for the book "The Ancient and Present State of Gloucestershire" by Robert Atkyns. Engravings include; 1.) Kingsweston the Seat of Edward Southwell, 2.) Alveston the Seat of Edward Hill, 3.) Toddington the Seat of Lord Tracy, and 4.) The Abbey in Cirencester The Seat of Thomas Master Esq.. These hand colored engravings are archivally framed and measure 18" x 14" (sight) and are housed in frames measuring 23" x 26".

600 – 800

❖ 3047

Harry Houdini Escape Tools

Pair of iron tools purported to be used by the famous escape artist and illusionist Harry Houdini (1874-1926) during his escape act from sealed wooden crates. Accompanying tools is notarized documentation indicating that these two tools were given to Houdini assistant Alex Weyer Jr. by Houdini himself. Both Alex Weyer Jr. and Alex Weyer Sr. were magicians. The tools are 1.) tongs measuring 8" in length. and 2.) unknown bar type tool measuring 19" in length. Both tools exhibit some light surface rust.

800 – 1200

❖ 3050

Baseball Card T201 Cobb/Crawford

Baseball card from the T201 Mecca Double Folders series featuring S. Crawford/T. Cobb. Card exhibits some wear and several light bends at bottom and rounded corners. In Crawford portion of card someone has placed the # "674" above his name. Sold WAF.

200 – 300

❖ 3051

Baseball Card T201 Matthewson/Bridwell (Mathewson)

Baseball card from the T201 Mecca Double Folders series featuring Matthewson/Bridwell with Mathewson spelled with extra "t" over portrait. Card exhibits some wear and several light bends at bottom with rounded corners and some light soiling. Sold WAF.

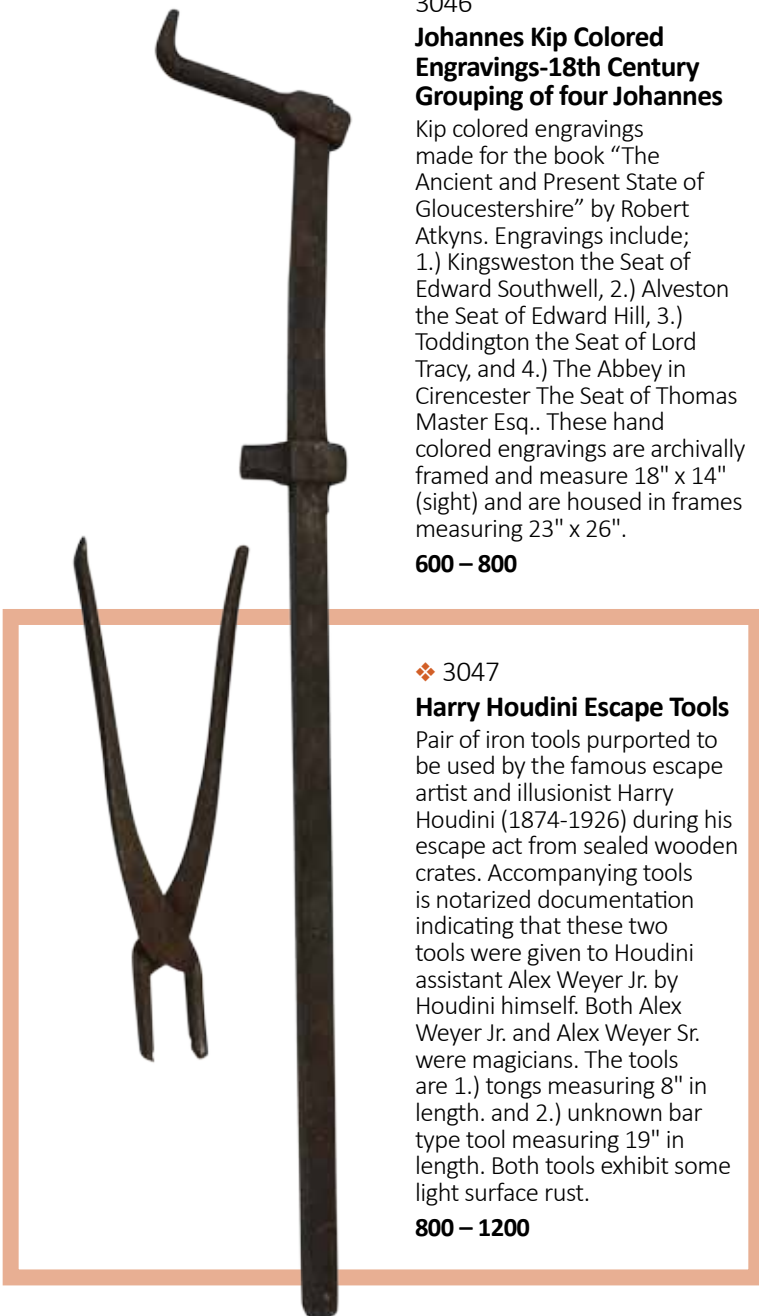
100 – 200

❖ 3052

Baseball Card T201 C. Bender/R. Oldring

Baseball card from the T201 Mecca Double Folders series featuring C. Bender/R. Oldring. Card exhibits slight wear and some light area scratches to Oldring section. Sold WAF.

100 – 200



HISTORICAL

3053

Grouping of T201 Baseball Cards

Grouping of 5 baseball cards from the T201 Mecca Double Folders series including; 1.) E. Walsh/F. Payne , 2.) Woodruff/Williams, 3.) T. Leach/G. Gibson, 4.) E. Lush/A. Hauser, and 5.) A. Leiffield/M. Simon. All cards exhibit wear, bends, some staining. Sold WAF.

100 – 150

3054

Grouping of T201 Baseball Cards

Grouping of 5 baseball cards from the T201 Mecca Double Folders series including; 1.) L. Doyle/C. Meyers , 2.) E. Foster/J. Ward, 3.) R. Miller/C. Herzog, 4.) McBride/Elberfeld, and 5.) T. Speaker/E. Gardner. All cards exhibit wear, bends, some staining and some tears. Sold WAF.

100 – 150

3055

Grouping of T201 Baseball Cards

Grouping of 5 baseball cards from the T201 Mecca Double Folders series including; 1.) A. McCabe/C. Starr, 2.) J. Downs/F. Odwell, 3.) B. Donovan/R. Stroud, 4.) H. Chase/E. Sweeney, and 5.) J. Barrett/G. McGlynn. All cards exhibit some wear, with some exhibiting slightly rounded corners, and Barrett/McGlynn card exhibiting some spotting on reverse. Sold WAF.

150 – 250

3056

Grouping of T201 Baseball Cards

Grouping of 5 baseball cards from the T201 Mecca Double Folders series including; 1.) Killian/Fitzpatrick, 2.) Hickman/Hinchman, 3.) R. Hartzell/W. Blair, 4.) W. Abstein/J. Butler, and 5.) H. Baker/T. Downie. All cards exhibit some wear, with some exhibiting slightly rounded corners, and H. Baker/T. Downie card exhibiting some light soiling on reverse. Sold WAF.

150 – 250

3057

Grouping of T201 Baseball Cards

Grouping of 5 baseball cards from the T201 Mecca Double Folders series including; 1.) T. Turner/G. Stovall, 2.) J. Evers/F. Chance, 3.) J. Barrett/G. McGlynn, 4.) Huggins/Bresnahan, and 5.) J. Kling/L. Cole. All cards exhibit some wear, with some exhibiting slightly rounded corners, and J. Kling/L. Cole card exhibiting some stain on reverse. Sold WAF.

150 – 250

3058

Grouping of T201 Baseball Cards

Grouping of 5 baseball cards from the T201 Mecca Double Folders series including; 1.) E. Walsh/F. Payne , 2.) M. Brown/A. Hofman, 3.) A. Mattern/G. Graham , 4.) Woodruff/Williams, and 5.) E. Cicotte/J. Thoney. All cards exhibit some wear, with some exhibiting slightly rounded corners, some exhibiting light soiling on reverses. Sold WAF.

150 – 250

3059

Grouping of T201 Baseball Cards

Grouping of 5 baseball cards from the T201 Mecca Double Folders series including; 1.) C. Seymour/J. Dygert , 2.) R. Miller/C. Herzog, 3.) A. McCabe/C. Starr , 4.) Z. Wheat/W. Bergen, and 5.) J. Lobert/E. Moore . All cards exhibit some wear, with some exhibiting slightly rounded corners. Sold WAF.

200 – 300

3060

Grouping of T201 Baseball Cards

Grouping of 5 baseball cards from the T201 Mecca Double Folders series including; 1.) McBride/Elberfeld , 2.) N. Rucker/J. Daubert, 3.) E. Cicotte/J. Thoney, 4.) J. Lobert/E. Moore , and 5.) McGinnity/McCarty . All cards exhibit some wear, with some exhibiting slightly rounded corners, and J. Lobert/E. Moore and McGinnity/McCarty card reverses exhibit some staining/soiling . Sold WAF.

150 – 250

3061

Baseball Card T201 W. Johnson/C. Street

Baseball card from the T201 Mecca Double Folders series featuring W. Johnson/C. Street. Card exhibits some wear and rounded corners. Sold WAF.

100 – 200

3062

Grouping of T206 Baseball Cards

Grouping of 5 baseball cards from the T206 series including; 1.) Frank Smith-Chicago(dark cap variation) , 2.) George Gibson-Pittsburg, 3.) Ed Summers-Detroit 4.) Lou Ritter-Kansas City , and 5.) John McAleese-St. Louis. All cards exhibit some wear, with some exhibiting slightly rounded corners. All cards present Piedmont backs. Sold WAF.

150 – 250

3063

Grouping of T206 Baseball Cards

Grouping of 5 baseball cards from the T206 series including; 1.) Fred Burchell-Buffalo , 2.) Jap Barbeau-St. Louis, 3.) Ambrose Puttmann-Louisville, 4.) John Ganzel-Rochester, and 5.) Tim Jordan-Brooklyn (portrait). All cards exhibit some wear, with some exhibiting slightly rounded corners. All cards present Piedmont backs. Sold WAF.

150 – 250

3064

Grouping of T206 Baseball Cards

Grouping of 5 baseball cards from the T206 series including; 1.) Ollie Pickering-Minneapolis , 2.) Bill Burns-Chicago, 3.) Jim Stephens-St. Louis, 4.) Jack Bliss-St. Louis, and 5.) Charley Carr-Indianapolis. All cards exhibit some wear, with some exhibiting slightly rounded corners. All cards present Piedmont backs. Sold WAF.

150 – 250

3065

Grouping of T206 Baseball Cards

Grouping of 5 baseball cards from the T206 series including; 1.) Sam Crawford-Detroit (throwing) , 2.) Bill Carrigan-Boston (bend), 3.) Billy Maloney-Rochester (abrasion), 4.) Bill Lattimore-Toledo, 5.) Bill Dahlen-Boston (bends), and Bill Clymer-Columbus . All cards exhibit some wear, with some exhibiting slightly rounded corners. All cards present Piedmont backs. Sold WAF.

150 – 250

3066

Grouping of T206 Baseball Cards

Grouping of 5 baseball cards from the T206 series including; 1.) Frank Arellanes-Boston, 2.) Carl Lungren-Kansas City, 3.) Rube Marquard-New York (hands at side), 4.) George Bell-Brooklyn (hands above head), and 5.) Spike Shannon-Kansas City. All cards exhibit some wear, with some exhibiting slightly rounded corners. All cards present Piedmont backs. Sold WAF.

150 – 250

3067

Grouping of T206 Baseball Cards

Grouping of 5 baseball cards from the T206 series including; 1.) Monte Cross-Indianapolis, 2.) Jack Hannifan-Jersey City, 3.) Ray Demmitt-New York, 4.) Dave Brain-Buffalo, and 5.) Jerry Freeman-Toledo. All cards exhibit some wear, with some exhibiting slightly rounded corners. All cards present Piedmont backs. Sold WAF.

150 – 250

3068

Grouping of T206 Baseball Cards

Grouping of 5 baseball cards from the T206 series including; 1.) Jack Knight-New York (portrait), 2.) Rube Marquard-New York (portrait), 3.) Harry Krause-Philadelphia (pitching), 4.) Jimmy Slagle-Baltimore, and 5.) Otto Knabe-Philadelphia. All cards exhibit some wear, with some exhibiting slightly rounded corners. All cards present Piedmont backs. Sold WAF.

150 – 250

3069

Grouping of T206 Baseball Cards

Grouping of 5 baseball cards from the T206 series including; 1.) Birdie Cree-New York, 2.) Joe McGinnity-Newark, 3.) Danny Hoffman-St. Louis, 4.) Ira Thomas-Philadelphia, and 5.) Kid Elberfeld-Washington (fielding) (bends). All cards exhibit some wear, with some exhibiting slightly rounded corners. All cards present Piedmont backs. Sold WAF.

150 – 250



❖ 3070

Baseball Card T206-Cy Young

Baseball card from the T206 series featuring Cy Young (with glove). Card exhibits some wear and slight rounding to corners. Reverse of card features Polar Bear Scrap Tobacco back. Sold WAF.

200 – 400

❖ 3071

Baseball Card T206-Ty Cobb

Baseball card from the T206 series featuring Ty Cobb (bat off shoulder). Card exhibits some wear, slight rounding to corners and a light vertical crease . Reverse of card features Polar Bear Scrap Tobacco back. Sold WAF.

300 – 500

3072

Pair of T206 Baseball Cards

Pair of baseball cards from the T206 series including; 1.) Harry Lord-Boston, and 2.) Roger Bresnahan-St. Louis (batting). All cards exhibit some wear, with some exhibiting slightly rounded corners. All cards present Piedmont backs. Sold WAF.

100 – 150

3073

Grouping of T206 Baseball Cards

Grouping of 5 baseball cards from the T206 series including; 1.) Frank Isbell-Chicago, 2.) Red Kleinow-Boston, 3.) Jack Quinn-New York, 4.) Art Fletcher-New York, and 5.) Tubby Spencer-Boston. All cards exhibit some wear, with some exhibiting slightly rounded corners. All cards present Sweet Caporal Cigarettes backs. Sold WAF.

150 – 250

3074

Grouping of T206 Baseball Cards

Grouping of 5 baseball cards from the T206 series including; 1.) Ed Killian-Detroit (portrait), 2.) Topsy Hartsel-Philadelphia, 3.) Dode Paskert-Cincinnati, 4.) Frank Oberlin-Minneapolis, 5.) Jake Stahl-Boston (no glove shows). All cards exhibit some wear, with some exhibiting slightly rounded corners. All cards present Sweet Caporal Cigarettes backs. Sold WAF.

150 – 250

HISTORICAL



3075

Grouping of T206 Baseball Cards

Grouping of 5 baseball cards from the T206 series including; 1.) Harry Howell-St. Louis (hand on waist), 2.) Owen Wilson-Pittsburg, 3.) Ed Cicotte-Boston, 4.) Fred Parent-Chicago, 5.) Dode Criss-St. Louis. All cards exhibit some wear, with some exhibiting slightly rounded corners. All cards present Sweet Caporal Cigarettes backs. Sold WAF.

150 – 250

3076

Grouping of T206 Baseball Cards

Grouping of 36 misc. baseball cards from the T206 series including; 19 with Piedmont backs, 12 with Sweet Caporal Cigarettes backs, 3 with El Principe de Gales backs, 1 with Polar Bear Scrap Tobacco back, and 1 with Sovereign Cigarettes backs. All cards exhibit heavy wear, have been significantly trimmed, exhibits folds and other issues. Grouping numbers 36 cards. Sold WAF.

100 – 200



3079



3077

Grouping of T206 Baseball Cards

Grouping of 20 misc. baseball cards from the T206 series all with Piedmont backs. All cards exhibit heavy wear, and exhibit folds and other issues. Grouping numbers 20 cards. Sold WAF.

150 – 200

3078

Grouping of T220 Boxing Cards

Grouping of 50 assorted boxing cards from the T220 series 49 with Mecca backs and one with Tolstoy back. Collection includes the John L. Sullivan, Joe Gans, James Corbett, George Dixon, Jack Dempsey, Peter Jackson, and others. Most cards in good condition with some slight corner rounding/corner bumps. Several cards (Pal Moore, Charles McCoy) exhibit significant wear/folds/loss on reverse. Sold WAF.

600 – 800



3080

Collection of T38 Aviator Trading Cards-1911

Collection of 21 of the 25 gold backed "The Aviators" series of trading cards (T38) circa 1911. Set was produced for the United Cigar Store Company. This collection includes the key cards; Louis Bleriot (#2), Glenn H. Curtiss (#4), Wilbur Wright (#24), and the Wright Brothers (#25). All cards exhibit wear, rounding to corners and some with other issues. Sold WAF.

100 – 150

3081

Complete Set of 1944 "American Beauties" (R59) Gum Cards

Complete set of 24 "American Beauties" trading cards produced by the Gum Inc., of Philadelphia, Pennsylvania. Cards show various risqué views of women doing various activities. Cards are titled using double entendres. Cards measure 64mm x 81 mm and feature blank backs. All cards exhibit light wear, with some exhibiting slightly rounded corners.

200 – 300

3082

Collection of "Between the Acts Actors" Tobacco Cards (T25)

Collection of 49 of the 50 gold backed "Between the Acts Actors" tobacco cards (T25) circa 1911-2. Set was produced by Between the Acts Little Cigars. All cards exhibit wear, rounding to corners and some small chips to black fronts. Sold WAF.

100 – 200

❖ 3079

Collection of T218 Sports Cards – Including Boxing

Collection of 152 cards from the classic 1910-era tobacco issues T218 "Champion Athletes and Prize Fighters" series featuring boxers and other athletes. The T218 series features boxers and various champion athletes of the era, including bowlers, billiards champions, golfers and track-and-field stars. This collection 61 cards featuring boxers and 91 cards featuring other athletes. Cards are in various conditions from near mint to several with folds and damage. Please request details list. Sold WAF.

800 – 1200

3083

Collection of T68 Heroes of History/Men of History Trading Cards-1911/12

Collection of 90 "Heroes of History"/ "Men of History series of trading cards (T68) circa 1911/12. Cards were produced for the Royal Bengals. Cards in various conditions and exhibit wear, some with numbers on reverse, rounding to corners an some with other issues (including three with mounting evidence with reverse losses). Sold WAF.

150 – 250

3084

Collection of Actor and Actress Tobacco Cards

Collections of tobacco cards including; 1.) Full set (Cards 1-50) of the John Player & Sons, "Film Stars" third series issued in 1938 by the Imperial Tobacco Company. Cards in good condition. 2.) Fatima Turkish Cigarette "Actress Series" (T-27) issued in 1910. Collection includes 50 cards (47-Fatima backed, 3-Richmond Straight Cut backed). All cards exhibit wear, rounding to corners an some with other issues. Sold WAF.

150 – 250

3085

Collection of Cowboy and Indians Tobacco Cards

Collections of tobacco cards including; 1.) Hassan backed "Indian Life in the 60's" series(T-73) issued in 1910. Collection includes 20 cards. 2.) Hassan backed "Cowboy" series (T-53) issued in 1909. Collection includes 14 cards. All cards exhibit wear, rounding to corners an some with bends. Sold WAF.

100 – 150

3086

Collection of University Leather Trading Cards

Collection of 20 leather novelty trading cards featuring pennants and cheers of various universities. Cards produced by the Murad Turkish Cigarettes and are housed in original issuing envelopes. Most cards in near min condition.

150 – 250

3087

Collection of 1940's Sports Autographs- Baseball & Boxing

Postcards autographed by Lew Tendler (1898-1970) American boxer, Rogers Hornsby, Sr. (1896-1963) American baseball infielder, manager, and coach, James Wren "Zack" Taylor (1898-1974) American baseball player, coach, scout and manager, Robert Abial "Red" Rolfe (1908-1969) American

baseball player and manager, Edward Trowbridge Collins Sr. (1887-1951), American baseball player, manager and executive, Henry Benjamin "Hank" Greenberg (1911-1986) American baseball player and team executive and Joseph Edward Cronin (1906-1984) American Baseball player, manager, general manager and president of the American League. All postcards postmarked/dated in the late 1940's.

100 – 200

❖ 3088

Early 20th Century Sports Pins-Tunney Boxing

Grouping of 3 sports related pins including; 1.) 1910-12 Sweet Caporal Pins (P2) for Dolly Gray-Washington Senators, 2.)1910-12 Sweet Caporal Pins (P2) of Ed Walsh-Chicago White Sox, and 3.) Gene Tunney boxing pin (1.25" in diameter) featuring a portrait of Tunney waist up. Pins was issued for the first Dempsey/Tunney fight, held on September 23, 1926, in Philadelphia, Pennsylvania. This rare pin was manufactured by the Phila. Badge Company.

500 – 800

3089

Charles Schulz Signature, Letter to Grade 4 at Ashford Elementary School

Framed Charles Schulz letterhead, envelope and print of Snoopy on his doghouse with hand drawn thought bubble "Thank you for all of your letters - they've been very enjoyable! Sincerely, Charles Schultz". Overall frame 17"h x 22"w

200 – 400

3090

14K Yellow Gold Ring with Yellow Diamonds

Nugget design ring features (1) 5mm round and (2) 4.5mm round, light yellow and (1) 3.8mm round, deep yellow Diamonds, approx. 1.3ctw. Size 9 1/4. 11.6gtw.

400 – 600

3091

14K Yellow Gold Ring with Champagne Diamonds

Features (20) 1.8mm round Diamonds, approx. .50ctw. Size 8. 8.2gtw.

300 – 500

3092

14K Yellow Gold Ring with Diamond

Features (1) 5mm round European cut Diamond, approx. .50ct. Size 8 3/4. 10.9gtw.

300 – 500



3088



JEWELRY



3093

3097



3094



3098



3101

❖ 3093

14K Yellow Gold Enameled Dragonfly Brooch with Diamond and Sapphire

2 X 3/8". Enameled wings feature (36) small round Diamonds, approx. .36ctw and (4) round blue Sapphires. 8.7gtw.

200 – 300

❖ 3094

18K Yellow Gold Brooch with Amethyst and Diamond

2 1/8 X 1 3/4". Features (1) 9mm round Amethyst and (29) small round Diamonds, approx. .45ctw. 14.7gtw.

400 – 600

3095

14K Yellow Gold Ring with Amethyst and Diamond Features

(1) 14 X 12mm oval Amethyst and (17) round Diamonds, approx. .50ctw. Size 9+ with arthritic balls. 19.2gtw.

500 – 700

3096

14K Yellow Gold Earrings with Angel Skin Coral

Each omega back post earring features (1) 15mm round Coral cabochon. 9.2gtw.

100 – 200

❖ 3097

14K Yellow Gold Articulated Turtle with Angel Skin Coral, Diamond and Emerald

1 1/2 X 2" dimensional Turtle with moving arms, legs, head and tail, features (15) 8 X 6mm oval Coral cabochons, (22) 2mm round Diamonds, approx. .66ctw and (2) round Emerald eyes. 20.9gtw without included clutch.

500 – 700

❖ 3098

Angel Skin Coral Bead Necklace with Carved Rose in 14K Yellow Gold Clasp. Double Strand

9 - 9.5mm knotted. 32 1/2" long inner strand including pressure tongue clasp with safety catch. 34" long outer strand. 200.4gtw.

400 – 600

3099

Angel Skin Coral Bead Bracelet with Cabochon in 14K Yellow Gold Clasp. Triple Strand

7 - 7.5mm knotted. 8" long including pressure tongue clasp with 16.2mm diameter X 1mm deep cabochon in nest type setting. 53.3gtw.

300 – 500

3100

Angel Skin Coral Bead Necklace with Carved Rose in 14K Yellow Gold Clasp

4.5 - 5mm beads woven into 17 1/2" long, including 1 1/4" long clasp, X 11mm wide mesh snake type necklace. 60.2gtw.

200 – 400

❖ 3101

14K Yellow and White Gold Ring with Amethyst and Diamond

Features (1) 22.6mm round fancy cut Amethyst surrounded by a halo of (27) round Diamonds, approx. 3.0ctw. in white gold. Size 8 1/2 - 12 with incorporated ring guard. 27.9gtw.

1000 – 2000



3104



3106

3102



3108

3107

❖ 3102

Ladies Cypres Wrist Watch. 14K Rose Gold

7" long with safety chain. 11.5mm square domed crystal. 17 Jewels. Manual wind. Engraved "R.D.C." on rear case. 28.6gtw.

400 – 600

3103

14K White Gold Earrings with Pearl and Diamond Each omega back post earring

features (4) Round Pearls, 6.2mm-7.5mm, (11) graduated round accent Diamonds and (1) 2.9mm round Diamond set stationary above Pearl in dangle. Pair: Approx. .72ctw. 11.7gtw.

200 – 400

❖ 3104

18K White Gold Bow Brooch with Sapphire and Diamond

1 3/8 X 1 1/4". Features multiple round pave set Diamonds, approx. 2.0ctw outlined with multiple square cut blue Sapphires. 14.8gtw without clutch.

800 – 1200

3105

14K Yellow and White Gold Floral Brooch with Sapphire and Diamond

1 3/4 X 1 1/8". Features (9) 2 - 2.8mm round dark blue Sapphires and (9) 1 - 1.2mm round graduated Diamonds. 11.7gtw without clutch.

200 – 300

❖ 3106

14K Yellow Gold Rings with Diamond. Eternity Bands. Set of 2.

Each 3.9mm wide ring is prong set in channel with (24) round Diamonds. Set holds approx. 3.0 ctw Diamond. Size 8 3/4. 7.9gtw.

400 – 1200

❖ 3107

14K Yellow and White Gold Slide with Diamonds. 14KY Omega Necklace

17" long X 7.8mm wide Omega with pressure tongue clasp and safety catch Slide is 2 1/2" long X 15mm wide and features (31) round pave set Diamonds, approx. .93ctw. 67.3gtw.

1000 – 1500

❖ 3108

14K Yellow and White Gold Diamond Bracelet.

Hinged Bangle. Cardow 2 1/4 X 2" I.D. Features (152) round pave set Diamonds, approx. 3.0ctw. 19.8gtw.

800 – 1200

3109

18K Yellow and White Gold Ring with Diamond

(91) 1.25 - 2mm round Diamonds, approx. 1.0ctw. Size 9. 11.6gtw.

500 – 800

JEWELRY



3110

❖ 3110

18KY Necklace and Bracelet **Necklace and Bracelet test** **18KY, hallmarked.**

Necklace: marked 22K does NOT test 22K. 16" long X 5/8" wide with etched panel bar slide clasp. Bracelet: 7 1/2" long X 1 7/8" wide with etched panel bar slide clasp. 140.20gtw.

3000 – 5000

3111

14K Yellow and White Gold **Ring with Diamonds**

White gold accent head and channels run through the yellow gold braiding of the 1 1/4" long design. Features (1) approx. 3.7mm round mine cut Diamond and (21) small round graduated single cut accent Diamonds. Size 7. 12.9gtw.

400 – 500

3112

David Yurman. Sterling **Silver and 14K Yellow Gold** **Necklace and Earrings Set.** **Black Onyx**

Necklace is 16 1/2" long with an 11.5mm round centerpiece featuring (1) 3.7mm round cabochon haloed with gold within a sterling swirl. Matching post and clutch earrings. 20.9gtw.

200 – 300

3113

14K Yellow Gold Omega **Necklace**

6.0mm wide with pressure tongue clasp and safety catch. 17" plus a 2" extension. 39.1gtw.

600 – 900

3114

18K Yellow Gold Ring **with Peridot**

Features (1) 14 X 10mm bezel set oval faceted Peridot. Signed inside shank. Size 6 1/2. 17.0gtw.

500 – 700

3115

18K White Gold Pendant **and Earrings with London** **Blue Topaz**

Pendant features (1) 20 X 18.5mm and each post earring with clutch features (1) 12.5 X 12.2mm or 13.2 X 12.5mm, princess cut Topaz. 23.0gtw.

400 – 600



3117

❖ 3116

3.26ct Diamond Ring. 14K **White Gold. AGA Certified**

Features (1) 9.76 X 9.55 X 5.63mm round Diamond, 3.26ct. Colour: K Clarity: I1 Cut: 3A Average. Size 5 3/4. 4.1gtw.

10000 – 15000

❖ 3117

Platinum Pin Pendant with **Diamond and Sapphire on** **14K White Gold Chain**

18" long loose rope chain with spring ring clasp. Pin/Pendant: 2 x 7/8" filigree setting features (36) round old cut Diamonds, approx. 2.0ctw, Colour: GH, Clarity: VS and (5) accent Sapphires. 11.9gtw.

1500 – 2500



3116



3119



3120



3121



3125



3123



3118

❖ 3118

Platinum Bracelet with Diamond and Sapphire

7" long. Filigree setting features (74) Round old cut Diamonds, approx. 5.50ctw, Clarity: VS to SI, Colour: JK and (16) Synthetic baguette Sapphires. 19.0gtw.

2000 – 4000

❖ 3119

18K White Gold Ring with Tanzanite and Diamond

Features (1) 8mm cushion cut Tanzanite surrounded by (20) princess cut Diamonds, approx. .68ctw. Size 10 3/4. 18.8gtw.

1000 – 1500

❖ 3120

14K Yellow Gold Diamond Ring

Features (1) 11.00 X 5.20mm marquise cut Diamond, approx. 1.00ct, Clarity: SI2 to I1, Colour: H1, flanked by (2) 5 X 3mm marquise cut Diamonds, approx. .40ctw, Clarity: VS, Colour: H1. 3.4gtw.

1500 – 2500

❖ 3121

14K White Gold Pendant on Chain. Diamond

18" long box chain. Pendant features (1) 5 X 3.5mm pear shape Diamond surrounded by multiple tapered baguette Diamonds, approx. .75ctw. 4.3gtw.

300 – 400

3122

14K White Gold Necklace with Sapphire and Diamond

17 1/2" long. Features (5) round Diamonds, approx. .40ctw alternating with (6) 2.7mm round blue Sapphires. 12.1gtw.

300 – 500

❖ 3123

14K Yellow Gold Brooch. Wreath Frame with TAMANACO Coin. Green Stone Leaves and Pearl

2 1/2 " diameter frame features (11) round Pearls and (11) green marquise cabochons. 36.0gtw.

800 – 1000

3124

14K Yellow Gold Pin. Floral Basket with Diamond, Sapphire, Ruby and Emerald 7/8"

Features (4) round Diamonds, (6) round Rubies, (4) marquise Sapphires and (4) round Emeralds. 3.9gtw.

100 – 200

❖ 3125

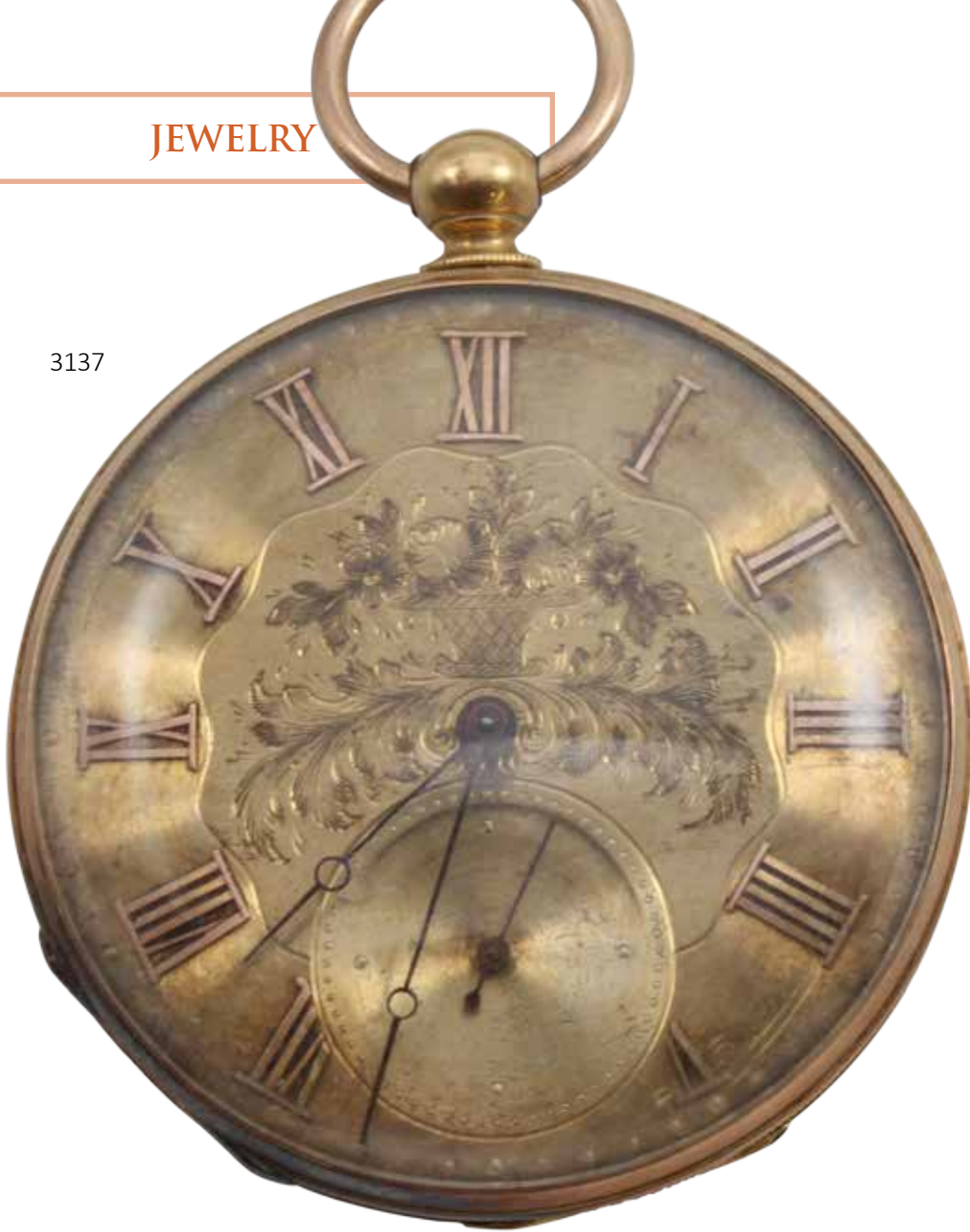
14K Yellow Gold Ring with Shell Cameos and Seed Pearls

15.5mm wide. Features (12) 2.5 - 2.7mm Pearls and (6) different 11 X 8mm oval female bust Cameos of assorted types of shell. Size 6 1/2 eternity band. 12.8gtw.

300 – 400

JEWELRY

3137



3139



3140



3126
18K Yellow and White Gold Ring with Diamonds

Features (1) 4.0mm and (1) 3.0mm round Diamond, approx. .33ctw. Each Diamond is set in a white base atop the yellow gold shank. Adjustable size. Pictured open to 5 1/4. 8.0gtw.

300 – 400

3127
14K Yellow Gold Watch Chain. Victorian Etched End Caps

15 3/4" long with swivel. Features etched end caps and an open work toggle fob.33.8gtw.

700 – 900

3128
Ladies Movado Wrist Watch with Diamonds. Stainless Steel

26mm diameter case. 8" long X 16mm wide band with invisible butterfly style deployment band. Mother of Pearl face. Bezel features (20) round Diamonds, approx. .30ctw. Quartz. Swiss Made. Water-Resistant. Sapphire Crystal. All Steel. 84.1gtw.

200 – 400

3129
Ladies Omega Wrist Watch. 14K Yellow Gold with Diamonds. Quartz

6" long. 18 X 15mm oval case. Each end features (3) round Diamonds, approx. .09ctw in watch. 14.3gtw.

300 – 500

3130
18K Yellow Gold PRYNGEPS Ladies Pendant Watch on Pin. Enameled

2 X 1 1/4". Pin finding not gold. 24.5mm round case. 17 Jewel Incabloc Extra. Enamel on bow shows some damage. 18.7gtw.

200 – 400

3131
Longines Wittnauer Wrist Watch Ladies 14K White Gold

6 1/4" long with safety chain. 17 X 13.8mm case. 17 Jewels. 5602. 52954594. 13.9gtw without the movement.

300 – 500

3132
Waltham Pocket Watch. 14K Yellow Gold

46mm. Open face. Monogrammed on rear case cover. Single sunk. Serial #20085306. 17 Jewels. 64.6gtw.

200 – 400

3133
Geneva Pocket Watch. 14K Yellow Gold

46.5mm. Open face. Single sunk. 68.1gtw.

300 – 500

3134
Bailey, Banks & Biddle Co. Philadelphia Pocket Watch. 18K Rose Gold

27.5mm. Open face. Single Sunk. Serial #1250. 18.5gtw.

100 – 300

3135
Howard Pocket Watch 14K White Gold. ENSIGN D W ALEXANDER USN ... B DIVISION USS ARISONA

43.8mm. Open face. Single Sunk. Serial #9203. Dust cover is engraved: "EXPRESSING OUR HIGH ESTEEM FOR ENSIGN D W ALEXANDER USN THE OFFICERS AND MEN OF B DIVISION USS ARISONA". Comes with original box and license. 54.3gtw.

300 – 500

3136
Hamilton Railway Special Pocket Watch

50.7mm. Open face. Gold filled. Single Sunk. With case.

300 – 500

❖ 3137
18K Yellow Gold Pocket Watch. Key Wind and Set

48.3mm. Open face. Single sunk. Etched dial with raised Roman numerals. No. 17635 Patent Lever 17 Jewels. M.I. TOBIAS. Liverpoole. Crystal is loose but present. 57.7gtw without crystal.

400 – 600

3138
14K Rose and White Gold Fob with Stamp. York Rite of Free Masonry

2 1/4 X 1 1/2". Triple sided crystal type stamp on axis features Monogram, Skull, HTWSSTKS. 33.7gtw.

200 – 400

❖ 3139
Movado Ermeto Travel Clock Purse Watch with Moonphase

2 X 1 1/2" closed. 14K Yellow Gold Plated. Sliding leather case with ring bail. Built-in stand. 25.5mm square face. Hand-wind. Features month and day registers and crescent moonphase window. Back stamped 1259 346M. METAL DORE.

300 – 500

❖ 3140
Patek Philippe Wrist Watch. 18K Yellow Gold

35mm lug end to lug end X 27.6mm wide. Roman Numerals. 18 Jewels. Ref: 5014. Movement: 1'853'961. Calibre: 215. Second sub-dial. Original black Leather band. Comes with booklet and Certificate of Origin. 53.3gtw.

4000 – 6000

❖ 3141
ROLEX. GMT-MASTER. Pepsi Bezel. Gents Wrist Watch

40.0mm round. 8 1/4" long. Oyster Perpetual Date. Stainless Steel. Black dial with blue-red bezel. Year: 1988. Serial #R714016. As is.

2000 – 4000



3141

SILVER



❖ 3142

Wallace Sterling Silver, "Grand Baroque" Flatware Set

Sterling silver set includes: (12) cocktail/seafood forks, (13) salad forks, (12) dinner forks, (12) hollow handle dinner knives, (12) solid butter knives, and (23) teaspoons. 84 pieces. 96.70 total troy oz. (including 12 hollow handle knives at .5 oz each)

1000 – 1500

3143

Gorham, Sterling Silver, "Strasbourg" Flatware Set

Gorham sterling silver set includes: (8) salad forks, (5) 7" forks, (3) 7.5" forks, (8) soup spoons, (14) tea spoons, (5) 9.25" hollow handle knives, (3) 9" hollow handle knives, (7) 6" hollow butter knives, (1) short pickle/olive fork, (1) sugar shell spoon, (1) youth fork, (1) hollow handle youth knife, (1) youth spoon. 58 pieces total. 100.26 total troy oz. (including 16 hollow handle knives at .5oz each)

1000 – 1500

❖ 3144

S. Blanckensee & Sons LTD, Sterling Silver Tea and Coffee Set

Sterling silver five piece tea and coffee set including tray. Markings for S. Blanckensee & Sons LTD, Birmingham, on sides of pieces. Monogrammed "WHS". 95.97 total troy oz

1000 – 1500

❖ 3145

Robert Makepeace & Richard Carter, Sterling Silver Tea Pot

Sterling silver, round can shaped, tea pot with wooden handle and finial. Made by Robert Makepeace & Richard Carter, London, 1777. Hallmarks on underside. Side engraved with oval and illustration of lion. 5"h x 9.25"w. 12.94 troy oz

300 – 500

3146

Group of (40) Coin Silver Spoons

Coin silver set of spoons includes: 27 teaspoons, 5 soup spoons, 8 serving spoons. All spoons with various hallmarks and monograms. Total of 40 spoons

200 – 400

❖ 3147

Georg Jensen, Ornamental, Sterling Silver "Pea Pod, 141" Serving Spoon

Sterling silver, ornamental pattern #141, pea pod, Georg Jensen. Marked with Georg Jensen hallmark and "141, Denmark, Sterling" on underside. 8"long. 2.36 troy oz

200 – 300

❖ 3148

Tiffany & Co, Sterling Silver, "Richelieu" Large Solid Sandwich Tongs

Sterling silver, "Richelieu" pattern, marked "Tiffany & Co, Sterling Pat.1892" on inside of tongs. Monogrammed "HLP" on handle. Housed in pink, satin lined box marked "Tiffany & Co. New York, Paris, London" on inside lid. 7.5" 5.92 troy oz

200 – 400

❖ 3149

Iris Repousse, Ice Bucket

German, 800 silver, ice bucket, detailed with flora and foliage handles. Hallmarks on underside. 10.75"h x 12.75"w 50.40 troy oz

400 – 600

❖ 3150

Stieff Sterling Silver, "Corsage" Flatware Set

Sterling silver set includes; (8) dinner knives, (6) butter knives, (11) salad forks, (8) dinner forks, (4) soup spoons, (13) teaspoons, (1) serving fork, (1) soup ladle, (1) pierced serving spoon, (1) serving spoon, (1) olive fork. 55 pieces in total. 52.59 troy oz (including 14 hollow handle knives at .5 oz each)

600 – 800



3149



3150

SILVER



3153

3152



3151

Stieff "Williamsburg Queen Anne" Sterling Silver Flatware Set

Sterling silver set includes; (12) cocktail fork, (12) salad fork, (12) dinner fork, (12) butter knives, (12) meat knives, (12) dinner knives, (12) soup spoons, (12) tea spoons, (4) serving spoons, (2) small ladles, (1) serving fork, (1) sugar spoon. 98 pieces total. 113.75 troy oz. (including 36 hollow handled knives at .5 oz each)

1000 – 1500



3154

❖ 3152

19/20th C. Large Russian Silver Presentation Kovsh by Mikhail Ovchinnikov

Engraved silver presentation kovsh with large cabochon bezel set jade on front (a later addition to the piece) and jade handle with applied Imperial Russian Eagle crest, supported with figural form of a dragon. Kovsh engraved with decoration throughout body, inscribed around upper rim with "The Beauty of the Feasting Friends" and "Fun and Joy Girlfriends". Gold washed interior. Mark on base, engraved with multiple signatures inscribed in Cyrillic. Hallmarks on foot and back below handle. Mikhail Ovchinnikov, Moscow, Russia, circa 1835-1882. Dragon handle support has been repaired possibly at the same time as the addition of the cabochon bezel setting, and mark on interior gold wash, from possible use as a punchbowl. 9"h x 16.5"w x 9.5"d. over 6 lbs

2000 – 3000

❖ 3153

Bailey, Banks & Biddle Sterling Silver Tea Set

Sterling silver, monogrammed "SGT" on coffee and tea pots, sugar & creamer. Slot pot without monogram. Incised with scroll and floral design. Tea pot complete with smooth polished quartz. Coffee pot and sugar lids missing quartz from finials. 84.30 troy oz

800 – 1200



❖ 3154

Dunkirk, Sterling Silver Tea Set

Sterling silver, Dunkirk Silversmiths, Meriden, CT. Service includes coffee pot, tea pot, sugar bowl, creamer and slot pot. pattern 500. 73.82 troy oz

800 – 1200

3155

William Gould Silver Hot Water Pot

William Gould, (reg 1739), 1748 “69=15” inscribe on underside of pot. Water pot and warming stand, hinged lid, hinged handle with woman profiled sides and cane wrapped insulated handle. Bird head spout 12.5" high. 64.62 troy oz

600 – 900

❖ 3156

Bailey, Banks & Biddle Sterling Silver Urn

Sterling silver urn. Monogrammed. Hallmarked “Bailey, Banks & Biddle Co., Sterling” on underside. 16"h x 7.5"w. 49.67 troy oz.

500 – 700

3156



3157

Taylor & Lawrie Sterling Silver Cup

Sterling silver cup crafted by Taylor & Lawrie. Four panels decorated with floral motifs, the forth Inscribed “To James M Cox by the Workmen in his Employ as a Mark of their Esteem July 3rd, 1860” on side panel. Hallmarked on underside. 4.5"h x 3"round 4.10 troy oz

100 – 200

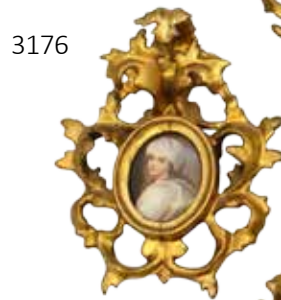
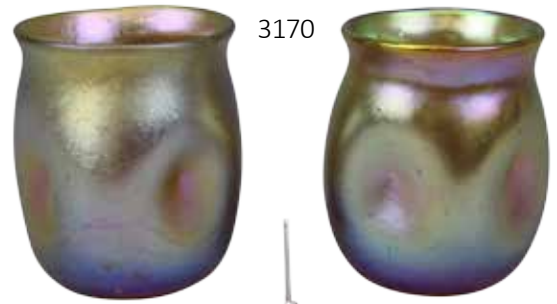
3158

Stieff Sterling Silver “Repousse” Bread Bowl

Sterling silver, repousse, rose, #202 pattern, oval bread tray. Marked “Stieff, Sterling, 202” on underside. 2.25"h x 13.25"w x 7.75"d, 14.30 troy oz

150 – 250

DECORATIVE



❖ 3159

**Royal Worcester
"Royal Lily" for Tiffany,
Demitasse Set**

Royal Worcester for Tiffany & Co. demitasse set includes coffee pitcher, (6) cups and saucers, and pedestal serving tray. Coffee pitcher repaired crack from top rim down 2". One saucer repaired from the edge in. Coffee pot 7.5" high

200 – 400

3160

**Royal Worcester "Royal
Lily" (3) Serving Pieces**

Large oval serving platter, marked "Worcester" and "Falcon Glass Works" on underside 16.5" x 21.25". Square vegetable platter, touch mark of a crown and "B.F.B." on underside, 10.5" x 10.5". Soup bowl with lid, marked "Mortlock's London" on undersides of bowl and lid, small chip at foot of bowl. 8.5"

400 – 600

3161

**Royal Worcester,
"Royal Lily", Assembled
(4) Serving Pieces**

Large Coalport rectangular tray c.1850, 12.5" x 16". Oval platter, marked with crest of "Ashworth Real Ironstone China" on underside, 13" x 10.5". Rice bowl, with repair on the inside top rim, 6". Soup bowl with lid, each marked "Mortlock's London" on undersides. 8.5"

400 – 600

3162

**Royal Worcester,
"Royal Lily"**

Assembled set includes (6) 10.5" dinner plates, (6) 10" dinner plates, (8) 9" salad plates, (6) 10" soup bowls. 26 pieces

300 – 500

3163

**Royal Worcester "Royal
Lily" Plates and Bowls**

Assembled set includes (6) 10.5" dinner plates, (6) 10" dinner plates, (8) 9" salad plates, (6) 10" soup bowls with solid blue outer band. 26 pieces

300 – 500

3164

**Royal Worcester Serving
Pieces**

Assembled set includes (6) 10.5" dinner plates, (6) 10" dinner plates, (8) 9" salad plates, (6) 10" soup bowls. 26 pieces

300 – 500

3165

**Royal Worcester
Serving Pieces**

Assembled set includes (2) 9" hors d'oeuvre plates, (6) 5.5" small dishes, (1) 4.75" bowl with 6.75" saucer and (1) gravy or cream pitcher.

300 – 500

3166

Pair of Wine Decanters

Clear glass with gilded metal details. Marked "Made in France" on underside. Each 10.25" h x 5" w x 3.25" d

200 – 400

❖ 3167

**Tiffany Studios
"Puddlestick" Candlestick**

Bronze with Dore finish that has worn, with some texture still remaining. Marked "Tiffany Studios, New York 1213" on underside. 18.5" h x 5.75" w

300 – 500

❖ 3168

19" L.C. Tiffany Fauvile Vase

Tiffany Studios Iridescent Favrile, gold with blue pulled feather design at base of vase. Signed and marked "4982L. L.C. Tiffany Fauvile" on underside of vase. 19.5" h x 6.25" w

300 – 500

3169

**Tiffany Studio Finger Bowl
and Saucer**

Tiffany Studios Gold Iridescent Favrile bowl and saucer. Signed "L.C.T." on underside of bowl and saucer. 2.75" h x 6.25" w

300 – 500

❖ 3170

**Pair of Tiffany, Pinch Side
Cordial Cups**

Tiffany Studios Gold Iridescent Favrile cups. Signed "L.C.T." on the undersides. 1.75" h x 1.5" w

100 – 200

3171

**(9) Steuben "Double
Teardrop" Water Goblet Set**

Steuben 7737 style, clear glass, double teardrop water goblets. Inscribed "Steuben" on undersides. Each goblet housed in felt drawstring bags in original Steuben glass storage box, marked "Steuben Glass Room, Julius Garfinckel & Co. In The Nation's Capital". 9 water glasses, 7.25" tall

300 – 500

3172

**(8) Steuben Double
Teardrop Martini Glass Set**

Steuben 7737 style, clear glass, double teardrop martini glasses. Inscribed "Steuben" on undersides. Each goblet housed in felt drawstring bags in original Steuben glass storage box, marked "Steuben Glass Room, Julius Garfinckel & Co. In The Nation's Capital". 8 martini glasses, 5" tall

200 – 400

3173

**Stueben, Dreves, Crystal
Water Pitcher**

Steuben glass, designed by John Dreves in 1939, for Steuben. Signed "Stueben" on underside of foot. 9" h x 9" w x 6" d

250 – 400

❖ 3174

**Steuben "Arctic Fisherman"
by James Houston**

Steuben glass and rhodium plated sterling silver. James Houston designed for Steuben in 1970. Signed "Steuben" on underside. 6.5" h x 5.75" w x 2.5" d. Housed in red leather presentation box. 6.5" h x 9.5" w x 11.5" d

800 – 1000

❖ 3175

**LaLique Crystal Polar Bear
Figurine**

Polished and frosted crystal, seated polar bear. Signed "LaLique" on lower right. 6.25" h x 7" w x 6.5" d

150 – 200

❖ 3176

**Pair of Porcelain Portrait
Paintings**

Pair of painted porcelain female portraits. Framed in ornate gilded gold frames. overall 5.25" h x 4.25" w, 8.25" h x 6.25" w

200 – 400

❖ 3177

**Pair of Mother and Child
Porcelain Paintings**

Pair of painted porcelain portraits, depict mother with seated child. Framed in ornate gilded gold frames. overall 7.75" h x 6" w, 7" h x 7" w

200 – 400

3178

**Bronze Sculpture-Rodin
Related**

Small bronze sculpture with applied verdigris of a hand holding a man's head/face. Sculpture measures 3.5" x 3.5" x 1.75" and features cast into the flat portion of underside text reading "To Watty with love from Etta". Etta Wedell Mastbaum (1886-1953) was a noted Philadelphia philanthropist, businesswoman, art collector, and with her husband responsible for the Rodin museum and it's collection now located on the Benjamin Franklin Parkway in Philadelphia.

600 – 1000

DECORATIVE



❖ 3179
Chinese Famile Rose Vase
Chinese export vase with polychrome garden scene. 23.75"h x 10"round
400 – 600

3180
Mantel Clock
Hand painted clock face, with reverse painted glass inset. 30.5"w x 17.5"w x 4.5"d
300 – 500

❖ 3181
Piolaine White Marble and Ormolu Mantel Clock.
White alabaster, black marble with ormolu frieze. Enameled clock face marked "Piolaine a Paria". Repair and lose to the crowning floral finial. Overall 20"h x 13.5"w x 6.75"d
400 – 600



3182
Brisson Mantel Clock
Marble with ebonized metal details. Marked "Brisson" on clock face. Seated female figured atop clock with large star on face. 8 day works. 22.5"h x 15.75"w x 6"d
600 – 900

3183
Lamp with Reverse Painted Glass Shade
Metal lamp base. Reverse painted glass shade, decorated with landscape. 23"h x 18"w
300 – 500

3184
J.E. Caldwell, Student Lamp
Brass double lamp base with glass globes. Marked "J.E. Caldwell" on turn knobs. 22"h x 26"w x 12.5"d
400 – 600

3185
19th c. English Brass Crank-Activated Bellows
Brass and wood. Crank-activated fireplace bellows. 8.75"h x 22.5"w x 7"d
500 – 700

❖ 3186
Maritime, Jack Tar, Umbrella Stand
Cast iron umbrella stand in the form of Jack Tar. Late 19th century. Repair to the arm on reverse. 27.5"h x 18"w
300 – 500



❖ 3187
Top Hat Box with Hat
Papered box with black top hat. 9.75"h x 13.25"w x 12"d
300 – 500

3188
Pair of Canes
Cigar smokers cane; silver hinged double cigar holder, atop rosewood stick with a brass base. Cane with silver handle of foliage and female form, ebonized wood, missing metal foot. 34"-36" tall
200 – 400



❖ 3189
**Gentleman's Flame Stitch,
 Folding Pocketbook,
 Dated 1759**

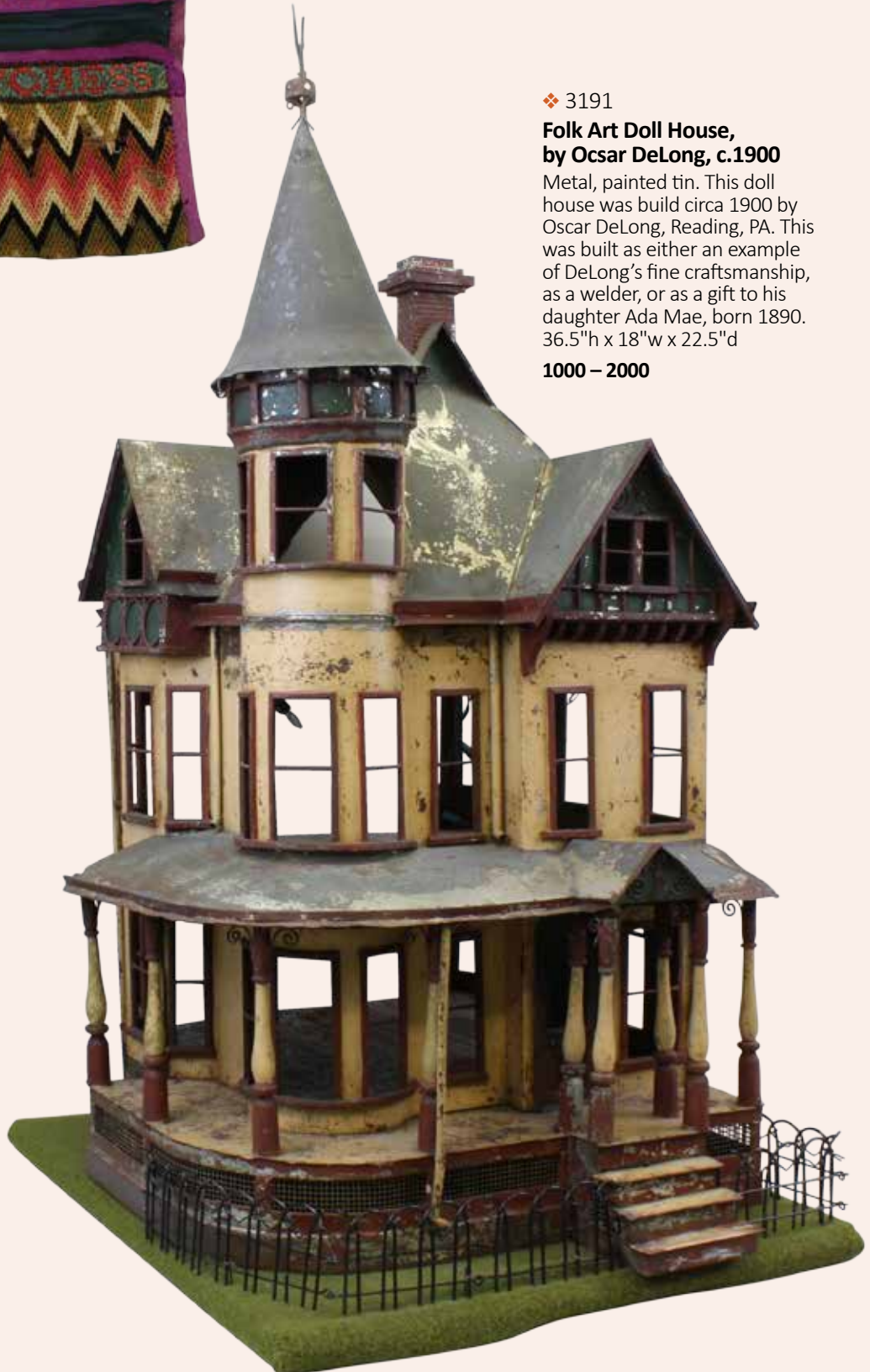
Flame stitch woven cloth with purple binding, inside edge stitched "Simhstoness". Accompanying documentation reads "This Pocketbook was made by Sarah Stone Croosman in 1759 for her twin brother Josiah Stone (my Grandfather) when she was 9 years old. It is 140 years old to this date 1899. M. A. Morgan". folded 8" x 4.5", open 8" x 8.5"

300 – 500

3190
**New England, Tri-Color,
 Double Hinge Lid Basket**

Split oak, oval, flat bottom gathering basket with double hinged lid. Tri-color, twisted weave decoration on sides and lids. Faded colors of red and green evident on outside that show true on inside. 14.5"h x 21.5"w x 15"d

200 – 400



❖ 3191
**Folk Art Doll House,
 by Ocsar DeLong, c.1900**

Metal, painted tin. This doll house was build circa 1900 by Oscar DeLong, Reading, PA. This was built as either an example of DeLong's fine craftsmanship, as a welder, or as a gift to his daughter Ada Mae, born 1890. 36.5"h x 18"w x 22.5"d

1000 – 2000

DECORATIVE



❖ 3192

**Ferdinand Pautrot (1832-1874, France)
Hunting Canine Sculpture**

Bronze with gilt patina. Signed "F Pautrot" on base.
Crack in tail. 8.5"h x 13.5"w x 5"d

300 – 500



❖ 3193

Georges Busson (1859-1933, France) Canine Sculpture

Bronze. Signed "Georges Busson, France" on lower right of
base. 6.5"h x 7.5"w x 2.5"d

200 – 400



❖ 3194

Jules Moigniez (1835-1894, France) Quail Sculpture

Bronze. Signed "J Moigniez" on lower right. Green marble plinth,
with name plate "Quail, Jules Moigniez" on mounted tag.
7.25"h x 6.5"w x 3.75"d

200 – 400



❖ 3195

Jules Moigniez (1835-1894, France) Canine Sculpture

Bronze. Signed "J Moigniez" on base of sculpture.
Mounted on green marble plinth. 7"h x 11.5"w x 3.5"d

300 – 500

❖ 3196

Emmanuel Fremiet (1824-1910, France) "La S'hubert 1520"

Bronze sculpture of infantry man seated on top of prancing horse.
Signed "E Fremiet" on lower right of base. 27"h x 15"w x 7.25"d

2000 – 4000

3197

Pair of Wooden Eastlake Style Shelves

Gold painted carved wooden shelves featuring eagles and foliage.
Each 17.25"h x 13"w x 7.5"d

300 – 500

3198

Pair of Wrought Iron Hanging Candle Sconces

Forged iron adjustable lighting hooks. 22.25-11.5"h x 4.25"w.
27-47"h x 6"w

200 – 400

3199

Group of (2) Rush Lamps and (1) Candle Stands

Wrought iron rush lights and candle holder, all with wood block
bases. 8.25-11.5"h x 3-4.25"w

200 – 400

3200

Group of (4) Wrought Iron Trivets

Wrought iron trivets, various designs. 1.25-3"h x 4-9"w

200 – 400

3201

Group of (1) Rush Lamp and (2) Candle Stands

Wrought iron lighting. Rush lamp with metal base. Candle holders,
various styles with wooden bases. 7-9.25"h x 3.5-5.75"w

200 – 400

3202

Double Betty Lamp

Forged iron burners with cutout decorative backs and hand forged
twisted iron hook. Back plates marked "55" and "58". 5.75"-12.75"h

200 – 400

3203

Combination Rush Lamp, Candle Stand

Wrought iron adjustable lighting stand. 29.5"h x 12.5"w

200 – 400

3204

Pair of Jam Hooks

Forged wrought iron jam hooks, one with peacock design, one with boot thumb release. 7.5-11" long

200 – 400

3205

Stoneware, Cake Crock

Stoneware, salt glaze cake crock. Unmarked. 6.25"h x 9"w

200 – 300

3206

Stoneware, Richard Remmey, Spittoon Crock

Stoneware, salt glazed spittoon crock. Marked "RCR" for Richard Remmey on side. 4.25"h x 7.25"w

200 – 300



3196

3207

Stoneware G.W. Fulper & Bros, 2 Gallon Crock

Stoneware, salt glaze handled crock with cobalt floral decoration. Marked "G.W. Fulper & Bros, Flemington, NJ, 2" on the upper front of crock. Applied lug handle on each side. 9"h x 10"round

200 – 300



❖ 3208

Pair of Evan R Jones, Pittston, PA, Crocks

Stoneware, salt glazed pottery with cobalt tulip decoration. Marked "Evan R Jones, Pittston, PA" on upper front. Each 8.75"h x 8.75"round

300 – 500

❖ 3209

Stoneware Pitcher with Floral Decoration

Stoneware, salt glaze pitcher with cobalt floral decoration. 10.75"h x 9.5"w x 6.5"d

200 – 400



3210

Stoneware Pitcher with Cobalt Decoration

Stoneware, salt glaze pottery pitcher with cobalt decoration. 10.75"h x 8.25"w x 6.5"d

200 – 400

3211

Stoneware, R. W. Russell. 3 Gallon Crock

Stoneware, salt glaze handled crock with cobalt leaf decoration. Marked "R.W. Russell, Beaver, Pa" on upper front. Applied lug handles on both sides of crock. 11"h x 11.75"w x 10"d

150 – 300

3212

Stoneware, Wm E Warner 2 Gallon Jug

Stoneware, salt glaze jug with cobalt tulip decoration. Marked "Wm.E. Warner, West Troy, PA" on upper front. 13"h x 9.25" round

150 – 200

QUILTS

"Quilts: A Window to the Past."

We are pleased to present this collection of quilts rich in American history. "Quilts are greatly enjoyed for their beauty, but they are more than just decorative bed covers. A quilt is tangible evidence of a woman's life, and the times in which she lived and her socio-economic status. Since the early nineteenth century quilt styles, patterns, techniques, and fabrics have changed, reflecting changes in society. The quilt's flexibility as a form of expression has kept it vital and allows us tantalizing glimpses into the past."

Quilt styles, techniques and fabrics reflected the history of settlers, wars, economic changes such as the Great Depression, national events, industrialization, Victorian period, religious beliefs and commemorative pieces. "Quilting is an old American art form with a large contemporary audience that is international in scope," stated Thomas Leavitt from the Museum of American Textile History.

This fine offering of quilts has been displayed in the Museum of American Textile History. In the early 1990's, the collection caught the attention of the Hearts and Hands Patchwork School President, Sank Nohara, of Tokyo, Japan. Nohara desired to bring the American quilting tradition to life for Japanese quilters. Many quilt shows had been to Japan, but none showed quilts in their historical context. The collection traveled to Japan and was on exhibition from June 20th, 1991 to September 8th, 1991.



❖ 3214

Pieced Quilt, Star of Bethlehem, c. 1840

Pennsylvania. Cotton; cotton chintz; plain weave; roller-printed. 123.5" x 118.5"

300 – 500

3215

Whole Cloth Patriotic Commemorative, c. 1876

American. Cotton; plain weave. This fabric is filled with patriotic emblems like the eagle, the American shield, and the Liberty Bell. 80" x 80"

100 – 300

3216

Whole Cloth, Admiral Dewey Commemorative, c.1898

American. Cotton; plain weave. This is a rare print commemorating Admiral Dewey's victory over the Spanish in Manila, Philippines, during the Spanish-American War. 75" x 60"

100 – 300



❖ 3213

Applique Quilt, Antique Rose or Whig Rose, New Jersey, Mid-Nineteenth Century

Cotton; plain weave. Fabric tape sewn to back "G Congwer...". 78" x 78"

400 – 600

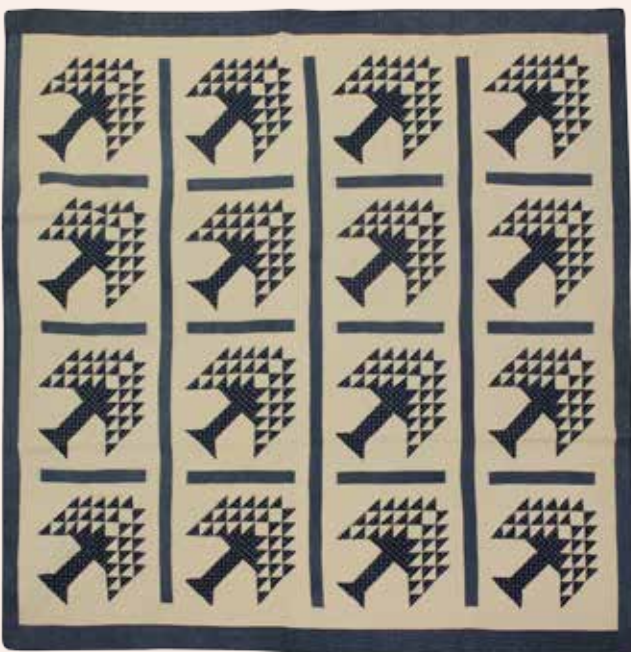


❖ 3217

Pieced Quilt, Log Cabin, Barn Raising Variation, Pennsylvania, c. 1870

Wool; wool warp and silk fill; plain wave and twill weave. Each block of strips is sewn by hand onto a coarsely woven cotton foundation block. This was a new method developed in the 1860's and was preferred until about 1925. 83" x 85"

100 – 300



❖ 3218

Pieced Quilt, Tree of Paradise, New York State, 1870-1890

Cotton; plain weave. 84" x 80"

100 – 300

❖ 3219

Pieced and Embroidered Crazy Quilt with Fans, Berks County, Pennsylvania, c 1880

Signed Silk; velvet; cut velvet; cotton lace. Signed "C.J. McCoy". 78" x 78"

300 – 500



QUILTS



❖ 3220

Pieced, Embroidered and Appliqued Crazy Quilt with Devil, New York State, 1885-1895

Silk; velvet; satin; cotton sateen; silk chenelle thread; cotton flannel; cotton. 78" x 69"

300 – 500

3221

Whole-Cloth Quilt, All-White, Pennsylvania, c. 1880

Cotton; plain weave. 85" x 78"

100 – 300



❖ 3222

Applique Quilt, Bird and Flower, Connecticut, c. 1850

Cotton; plain weave. 87" x 85"

300 – 500

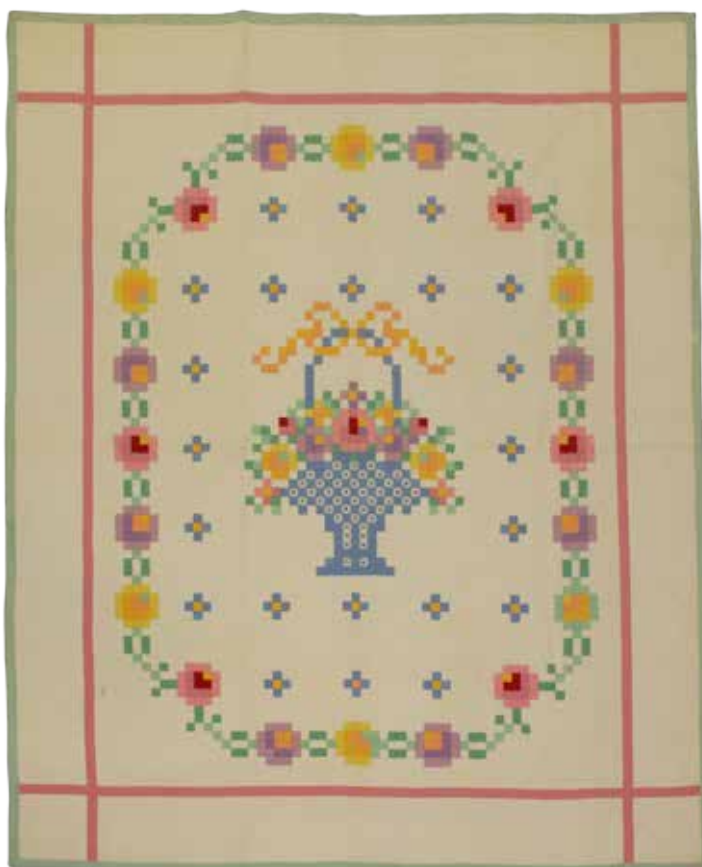


❖ 3223

Pieced and Applique Quilt Top, Presentation Album, Ohio, c. 1850

Cotton; plain weave; cotton and silk thread. 101" x 101"

400 – 600



3224
**Pieced Quilt, Spinning Triangles,
 Found in New Hampshire, c. 1935**

Cotton; plain weave. 77" x 69"

100 – 300

❖ 3225
Applique Quilt, Basket of Flowers, Pennsylvania, 1939

Cotton; plain weave. Dated "October 28th, 1939. Signed
 "Clara S. Lessig". 91" x 76"

100 – 300

3226
Quilt Top, Sampler Pattern, c.1930

New York State. Cotton; plain weave. Patches are hand-sewn,
 blocks are joined by sewing machine. 70" x 88"

100 – 300



3227
Pieced and Applique Quilt, Sampler, Illinois, c. 1940

Cotton; plain weave. 100" x 100"

100 – 300

❖ 3228
**Pieced Quilt, Indian Meadow, Rocky Glen or Little
 Sawtooth, Boston, c. 1835**

Cotton, cotton chintz, plain weave, roller and block-printed.
 Binding: cotton, plain weave, hand woven on tape loom.
 This quilt came with the story that it was made in Boston for
 a bride in Baltimore. 112" x 116"

400 – 600

QUILTS

3229

Pieced Charm Quilt, Ohio, dated 1895

Cotton; plain weave and twill weave; cotton flannel. 82" x 73"

100 – 300

3230

Outline-Embroidered Children's Quilt, c. 1890

Pennsylvania. Cotton; plain weave. 10.5" x 10.5"

100 – 300



❖ 3231

Pieced Quilt, Diamond, Lancaster County, Pennsylvania, c. 1925.

Wool; twill weave. Made by Fanny Zook before her marriage. This simple form of the Diamond, without corner blocks, is a perfect example of Amish striving for calm and simplicity. 78" x 77"

100 – 300

3232

Outline-Embroidered Quilt, 1901 Pan-American Exposition Commemorative, Near Buffalo, New York, c. 1901

Cotton; plain weave. Cotton, embroidery thread. 78" x 69"

100 – 300

3233

Pieced Quilt, Beehive, New Jersey, c. 1875

Cotton; plain weave. 57" x 64"

100 – 300

3234

Oak Leaf and Reel Crib Quilt

Applique. Cotton, plain weave. Pennsylvania, c. 1880. 36" x 36"

100 – 300



❖ 3235

Triple Irish Chain Quilt

Pieced quilt, early 20th century. Mennonite, from near Blue Ball, Berks Co, PA. 89" x 92"

200 – 400

3236

Handmade Original Fan Design, Japanese, 1991

Silk, "Chirimen" kimono fabrics and black silk, silk Obi fabric binding. One-of-a-kind. 22" x 22"

100 – 200

3237

Reverse Applique Peacock Quilt, Wethersfield, Connecticut, Late 19th/20th Century

Silk front and backing. 64" x 65"

300 – 500

3238

Pieced Crib Quilt, Postage Stamp Medallion

Western Pennsylvania, c. 1870. Cotton; plain weave. 50" x 50"

100 – 200

3239

Pair of Applique Child's Quilt, Dutch Theme, Ohio, c.1930

Cotton; plain weave. Each 67" x 45.5"

100 – 300

3240

Pieced Quilt Top, Friendship Style

Found in Massachusetts, c. 1850. Cotton; plain weave. 91" x 90"

100 – 300



❖ 3241

Pieced Quilt, Birds in the Air, Indiana, 1890-1920

Cotton; plain weave. 82" x 76"

400 – 600

3242

Wool Moon and Stars Quilt

Plush work, Dated 1927 and Initials, Mennonite or Amish. 58" x 69"

100 – 300

3243

Appliqued Whig Rose or Ohio Rose Quilt

Appliqued and stuffed quilt, Whig Rose or Ohio Rose with Grapevine border. Found in Massachusetts, 19th c. 82" x 92"

300 – 500



❖ 3244

Pieced Quilt, Mariner's Compass Pattern, Found in Pennsylvania, 1870's

Cotton; plain weave, hand-sewn sleeve for hanging. 79" x 82"

400 – 600

RUGS



❖ 3245

Sarouk Carpet

Hand woven, all over floral decoration under a burgundy field and navy blue borders. 11'5"w x 18'7"l

1800 – 2200

3246

Sarouk Area Rug

Hand woven, diamond floral medallion in a repeating floral and burgundy field with a floral navy blue main border. 6'3"w x 9'2"l

600 – 900

3247

Sarouk Area Rug

Hand woven, all over floral and burgundy field with a floral and vine navy blue main border. 4'5"w x 6'11"l

300 – 500

3248

Sarouk Room Size Rug

Hand woven wool with an all over floral and vine decoration in a lavender field and navy blue main border. 9'w x 11'8"l

800 – 1200



❖ 3249

Sarouk Carpet

Hand woven wool with multicolored all over floral, vine and salmon field with a repeating floral and navy blue main border. 8'10"w x 19'2"l

1200 – 1800



❖ 3250

Mahajaran Sarouk Palace Carpet

Hand woven, floral, peacock and geometric central medallion in a navy blue field with field end urn and peacock motifs with salmon floral spandrels. 12'4"w x 23'5"l

3000 – 5000



3251

❖ 3251

Bidjar Room Size Rug

Hand woven, repeating floral and tendril salmon field with a navy blue floral main border. 9'3"w x 12'3"l

2500 – 3500

❖ 3252

Heriz Room Size Rug

Hand woven, geometric floral and hook medallion with floral, hook and ivory spandrels. 10'1"w x 14'3"l

1500 – 2000

❖ 3253

Tabriz Room Size Rug

Hand woven, repeating floral and ivory field with a geometric floral and red main border. 8'7"w x 12'l

600 – 900



3252



3253

RUGS



❖ 3254

Indo-Tabriz Room Size Rug

Hand woven with a diamond central floral medallion in a salmon field with floral light and navy blue spandrels and borders. 9'w x 12'l

700 – 1000

3255

Kashan Area Rug

Hand woven with a diamond floral central medallion on red field and floral navy blue boarder. 4'4"w x 7'1"l

500 – 800

❖ 3256

Kashan Area Rug

Hand woven with a diamond floral central medallion on a red field and floral navy blue boarder. 4'4"w x 7'1"l

500 – 800

❖ 3257

Shirvan Prayer Rug

Hand woven, triple geometric medallions in a navy blue field with repeating geometric and ivory main border. 3'10"w x 7'1"l

1000 – 1500



3256



3257



◆ 3258

Karaja Area Rug

Hand woven with a geometric floral and hook medallion with six surrounding geometric floral medallions in a red field and a zig zig decorated inner boarder. 4'9"w x 6'4"

400 – 600

3259

Lori Area Rug

Hand woven, all over boteh and aviary motif salmon field with boteh, floral and geometric borders. 4'3"w x 7'6"

400 – 600



◆ 3260

Turkish Room Size Carpet

Hand woven, repeating floral and vine ivory field with a floral, figural, and red main border. 11'8"w x 17'11"

2500 – 3500

FURNITURE



3261

❖ 3261

Jacob Hage Tallcase Clock

Jacob Hage, Lower Salford. Cherry case with scrolled broken arch pediment and columns, arched door, case with reeded corner columns ogee feet, painted dial, moon phase, 8 day works. 93"h x 19.5"w x 11"d

3000 – 5000

❖ 3262

Robert D Guthrie, Chester County, PA, Tall Case Clock

Walnut case with scrolled broken arch pediment and finials, reeded columns, paint decorated dial with moon phase, 8 day works, and French feet. 95.5"h x 20"w x 11"d

1000 – 2000



3262

❖ 3263

Pennsylvania Tall Case Clock

Walnut case with a scrolled broken pediment and finials, reeded columns, arched door and ogee feet, paint decorated dial with moon phase, 8 day works. 95"h x 22"w x 11"d

2000 – 3000

❖ 3264

1839 Lowry Richards Tall Case Clock, Unsigned

Walnut case with a scrolled carved pediment and finials, reeded columns, paint decorated dial with moon phase, 8 day works, and French feet. 98"h x 25"w x 10"d

2000 – 3000



3263

❖ 3265

Peter Stretch Philadelphia Tall Case Clock

Cherry case with a broken arch pediment, bonnet with columns, banded inlay with geometric and shell marquetry, painted dial with moon phase, 8 day works with standard movement. 94" h x 24.5"w x 11.5"d

1000 – 2000

❖ 3266

WM Thompson Dalkeit English Tall Case Clock

Mahogany case with a broken arch pediment, roman key pediment, reeded columns on a plinth base with ogee feet, paint decorated dial, 8 day works. 85"h x 18"h x 9.5"d

800 – 1200



3264

3267

Geo. Golden Birmingham Tall Case Clock

Figured mahogany case on a plinth base and bun feet, paint decorated dial with moon phase, 8 day works. 95"h x 24"w x 10"d

800 – 1200

❖ 3268

New England Cherrywood Highboy

Marriage piece with a broken arch pediment with twisted reeded finials, shell carved center drawer flanked by four short drawers over four graduated drawers over one over a center fan carved three drawers on cabriole legs. 87"h x 37"w x 19"w

2000 – 4000



3265



3266



3268



3271



3270

3269

New England Queen Anne Tiger Maple Chest-on-Frame

Center shell carved three short drawers over three graduated drawers over one over center shell carved three drawers. 67.5"h x 40"w x 18.5"d

1500 – 2500

❖ 3270

New England Queen Anne Highboy

Molded top with a center fan carved three drawers over four graduated drawers top piece over one over a center shell carved three drawers with a shaped apron and drop finials on cabriole legs and pad feet. 76.5"h x 39"w x 22"d

800 – 1200

❖ 3271

Pennsylvania Chippendale Tall Chest

Walnut with a dentil molded cornice, reeded quarter columns, three short drawers over five graduated drawers on ogee bracket feet and casters. 69"h x 43.75"w x 24.25"d

1000 – 2000

FURNITURE



3273



3276

3277



3272

Pennsylvania Chippendale Walnut Tall Chest

Triple molded top, reeded columns with central turned rings, three over two short drawers over five graduated drawers conforming on shaped ogee bracket feet. 69.5"h x 42.5"w x 21.5"d

1000 – 2000

❖ 3273

Chippendale Tiger Maple Chest of Drawers

Molded top with six graduated drawers on bracket feet. 53"h x 39"w x 20"d

600 – 900

3274

Pennsylvania Chippendale Tall Chest

Cherry case with reeded columns, three over two short drawers over four graduated drawers on ogee bracket feet. 62.5"h x 43"w x 20.5"d

800 – 1200

3275

Pennsylvania Sheraton Mahogany Chest of Drawers

Bow front with reeded columns and paneled sides, four graduated drawers on reeded tapered legs. 39"h x 42"w x 22"d

300 – 500

3278



3279



3280

❖ 3276

Pennsylvania Federal Red Wash Corner Cupboard

Molded cornice with a twelve lite door over two doors with sandwich glass knobs, on shaped feet and old surface. 88"h x 42"w x 21"d

1500 – 2500

❖ 3278

Ornate Richly Carved Dome Open Corner Cupboard

Pine with floral, fruit, and foliate carved decoration, repeating carved edges, arched dome open top with a domed back over two doors. 102"h x 47"w x 18"d

1000 – 1200

❖ 3279

Ornate Richly Carved Dome Open Corner Cupboard

Pine with floral, fruit, and foliate carved decoration, repeating carved edges, arched dome open top with a domed back over two doors. 102"h x 47"w x 18"d

1000 – 1200

❖ 3280

Pennsylvania Step Back Cupboard

Pine with a heavy molded cornice, twelve lite two doors over two drawers over two doors on shaped feet. 80"h x 55"w x 20"d

1000 – 1500

❖ 3277

Chippendale Walnut Corner Cupboard

Broken arch pediment with a thirteen lite single arched door over two doors on ogee bracket feet. 97"h x 43"w x 21"d

800 – 1200

3281

Drop Leaf Extension Dining Table

2 drop leaves each 11.5"w, 3 extension leaves each 12"w. Six tapered rounded legs on casters. 29.75"h x 23.5-81.5"w x 66"d

200 – 400

FURNITURE



3283



3284



3286



3289



3290



3291

3282

Bucket Bench

Pine with a shaped tiered two drawer backplash top over one door. 44"h x 28.25"w x 16.5"d

300 – 500

❖ 3283

Art Nouveau Style Breakfront Sideboard

Rosewood with a 1.5" marble top, carved columns, three drawers over four floral marquetry and veneered doors on molded plinth on reeded tapered feet, signed E. Maierer on middle right door. 40"h x 75"w x 26"d

800 – 1200

❖ 3284

Rosewood Marquetry Center Table

Classical inlaid center motif with figural and c-scroll ormolu mounts on cabriole legs. 30"h x 46"w x 30"d

300 – 500

3285

French Ormolu Mounted Parlor Table

Marble top, mahogany, two tier on cabriole legs. 30"h x 19"w

200 – 400

❖ 3286

In the Manner of Anthony Quervelle, Philadelphia Mahogany Pier Table

Marble top with S-scroll pillars mirrored back, two tier on scrolled and turned legs. 38.5"h x 43.5"w x 19"d

400 – 600

3287

Giltwood Carved Wall Mirror

Carved rosette, acanthus, and scrolled decoration. 56"h x 27"w

200 – 400

3288

Gilt Bronze Chandelier

Ornate figural and acanthus decoration with crystal prisms. 28"h x 19"w

1000 – 1500

❖ 3289

Pair of Victorian Leather Stools

Leather stools with nail head trim and leather cushions. Sold by Christie's in 2001.

Each 20.25"h x 33"w x 20"d

800 – 1200

❖ 3290

Pair of Early 19th c, Terrestrial Globes by Bardin, London

Each globe is paper lined and mounted in wooden stand with compass dial at base. Sold by Christie's in 2001.

Each 25"h x 16"w

6000 – 9000



3292



3295



3294

❖ 3291

(2) Pair of Richly Carved Mahogany Pedestals

Ornate figural carved columns with center floral relief tapering to a conforming base. 41.5"h x 15.5"w x 11"d

400 – 600

❖ 3292

Adirondack Folk Art Center Table

Wicker with a star and heart relief top with a twisted pedestal on a tripod base. 26"h x 22.5"round

600 – 900

3293

Victorian Musical Singing Bird and Cage

Giltwood carved cage with a copper stand, cage. 20.5"h x 9.5"d, stand 70"h

400 – 600

❖ 3294

Steinway Baby Grand Piano

Serial No. 284998, mahogany case with tapered squared legs on casters, 38.5"h x 56"w x 61"d.

3000 – 5000

❖ 3295

Alabaster Bust "Lucezia Romana"

On a reeded and turned three piece marble base, bust. 22"h x 20"w x 10"w, pedestal, 41"h x 21"w x 11"d

800 – 1200

❖ 3296

French Gilt Bronze Urn and Ornate Carved Pedestal

Cherub figural top with classical figural center motif with acanthus, floral and fruit decoration on a carved scrolled and molded walnut pedestal. Urn 35"h x 12"w, pedestal 46"h x 21"w x 13.5"d

400 – 600

3297

After Antonio Canova (1757-1822, Italy) The Three Graces

Italian white marble. Unsigned. 27" high

2000 – 3000



FINE ART



3298

3299



3301



3300



3304



3305



3308

❖ 3298

**Stephen C LeBlanc
(late 20th c, Colorado)
"Above the Rest"**

Pair of bronze bald eagle sculptures. Signed "LeBlanc" at the base of the sculpture. Each 20.75" high

1000 – 1500

❖ 3299

James LaCassa (20/21st century, Arizona) "Karuna"

Bronze. Edition 21/30 Signed "J. LaCassa" and titled on base. Titled and dated "Karuna, 2007". 30"h x 12"w

1000 – 2000

❖ 3300

Klaus Ihlenfeld (b. 1934, Pennsylvania, Germany)

Bronze. Marked "K" on base. 5"h x 3.5"round

600 – 900

❖ 3301

Howard Finster (1916-2001, Georgia, Alabama) "Out to Win the World to God"

Mixed media, painted wood, marker and paper. Signed "Howard Finster" in lower right. Marked with artist's signature symbol "Noah's Ark Bird" on reverse. 6.25"h x 10.75"w x 3.75"d

200 – 300

3302

Daniel Garber (1880-1958, Pennsylvania, Ohio, Indiana) "Birmingham Meeting House"

Etching. Signed "Daniel Garber" in lower right. Inscribed title. Hazing and residue on underside of glass. 6"h x 11"w

600 – 800

3303

Daniel Garber (1880-1958, Pennsylvania, Ohio, Indiana) "Illyria"

Etching. Signed "Daniel Garber" in lower right. 8.75"h x 11.75"w

800 – 1000

❖ 3304

Daniel Garber (1880-1958, Pennsylvania, Ohio, Indiana) "The Limeport Quarry"

Signed etching. Signed "Daniel Garber" in lower right. Inscribed with title. 9"h x 11.5w

800 – 1000

❖ 3305

Rockwell Kent (1882-1971, New York) "Wake up America"

Print. Pencil signed "Rockwell Kent" in lower right. Inscribed and dated 1947 in lower left and center. 13"h x 9.25"w

800 – 1200

3306

Rockwell Kent (1882-1971, New York) Girl on Cliff

Woodblock print. Pencil signed "Rockwell Kent" in lower right. 6.5"h x 4.75"w

600 – 800

3307

Childe Hassam (1859-1935, New York, Massachusetts) "A Vermont Village"

Etching. Pencil inscribed "Hassam" in lower right. Titled and dated "1923" on "M. Knoedler & Co, Inc" label on reverse. 5.75"h x 8.5"w

400 – 600

❖ 3308

Group of 6 Le Perroquet Prints

Set of six etchings from Histoire Naturelle des Perroquets. Plates 93, 94, 110, 110, 118, 128. Each etching is matted and framed. Foxing apparent on etchings. Each 13.25"h x 10.25"w

1000 – 2000

3309

Tadashi Nakayama (1927-2014, Japan) "Eastern Wind"

Woodblock print. Edition 20/50. Signed and dated "1959 T. Nakayama" in lower left. 28.5"h x 24"w

300 – 500

FINE ART

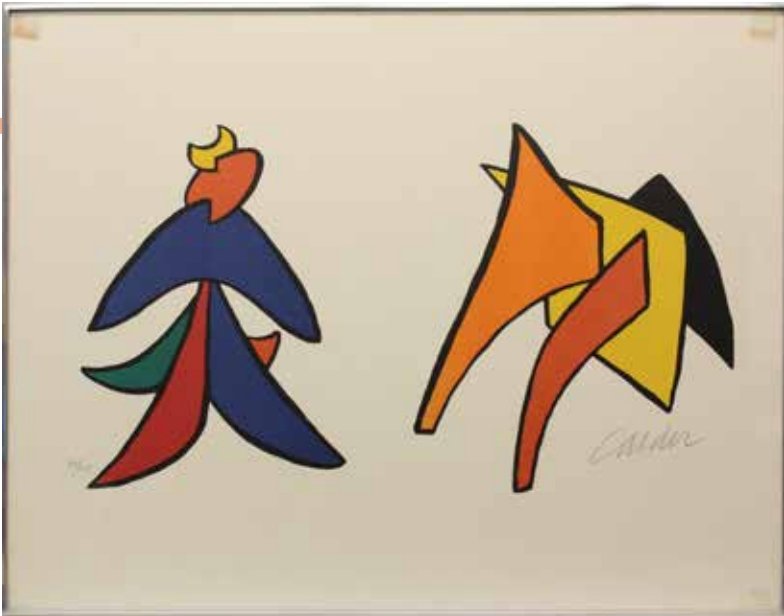
- 3310
Herbert Bauer (1935-1986, Germany) "Dynamiscbs Formenspiel, 1968"
 Lithograph, edition 92/160. Pencil signed and dated "Bauer, 1968" in lower left. Titled in pencil, "Dynamiscbs Formenspiel" dynamic shape-game, in upper right. 32.5"h x 25.5"w
400 – 600
- ❖ 3311
Alexander Calder (1898-1976, Connecticut, New York, France)
 Lithograph, edition 71/75. Pencil signed "Calder" in lower right. 21.25"h x 29"w
1000 – 1500
- 3312
Alexander Calder (1898-1976, Connecticut, New York, France) "Study for Sculpture I"
 Color lithograph on woven paper. Signed "Calder" in pencil in lower right. Numbered limited edition "84/125" in lower left. 18"h x 22.25"w
1000 – 1500
- ❖ 3313
Alexander Calder (1898-1976, Connecticut, New York, France) "2 Plates, from Stables c.1965"
 Color lithograph on woven paper. Signed "Calder" in pencil in lower right. Numbered limited edition "97/125" in lower left. 18.5"h x 23.75"w
2000 – 3000
- 3314
LeRoy Neiman (1921-2012, New York, Illinois, Minnesota) Cafe
 Serigraph. Pencil signed "LeRoy Neiman" in lower right. 21"h x 26"w
600 – 800
- 3315
Henry Spencer Moore (1898-1986, United Kingdom) "Two Heads"
 P.P. 6/10. Pencil signed "Moore" in lower right. Image size 8.5"h x 11.5"w
800 – 1000
- 3316
Joan Miro (1893-1983, Spanish) "L'issue Derobee"
 Etching and watercolor on paper. Double sided. Signed "Miro" in lower right and "H.C." in lower left. 12"h x 19"w
800 – 1000
- 3317
Pablo Picasso (1881-1973, Spain, France)
 Lithography. Edition 99/100. Signed "Picasso" in lower right. 15.75"h x 12"w
200 – 400
- 3318
Barbara Hepworth (1903-1975, England) "Rangatira II"
 Screenprint on paper. Signed "Barbara Hepworth" in lower right. Edition 50/60. 29.5"h x 21"w
1000 – 1500
- ❖ 3319
Victor Vasarely (1906-1997, France, Hungary) Permutation: Ombre-Violet 1968
 Limited edition silkscreen on paper. Signed "Vasarely" in lower right, numbered "4/180" in lower left. Postcard on reverse indicates this piece was exhibited at the Philadelphia Museum of Art, 1972. 23.5"h x 23.5"w
800 – 1200
- ❖ 3320
Andrew Wyeth (1917-2009, Pennsylvania, Maine) "Monday Morning"
 Collotype. Limited edition 146/300. Signed "Andrew Wyeth" in lower right. 12"h x 17"w
800 – 1000
- 3321
Ramon Pichot (1924-1996, Spain) "La Manana"
 Oil on canvas. Signed "R Pichot" in lower right. Interior with female nude. 31"h x 25"w
300 – 500
- 3322
James Milton Sessions (1882-1962, Illinois) "Drying the Sails"
 Watercolor. Signed and dated "Sessions, '36" in lower right. Nautical themed subject painted with deep hues of blues and greens. 9.25"h x 10.75"w
250 – 500
- 3323
Frank Harrison Redelius (1925-2011, Maryland, New York, France) "Triton's Trumpet"
 Oil on board. Signed and dated "F.H. Redelius, 1967" in lower right. Titled on verso. Still life with shells and bowl of grapes. 10.75"h x 13.5"w
300 – 600
- 3324
Edoardo Gordiniani (1866-1961, New York, Italy, France) Portrait of Woman in Pink
 Oil on canvas. Signed and dated "E Gordiniani, 1895" in upper left. 20"h x 15.5"w
400 – 600
- 3325
Robert Dudley (1826-1900, United Kingdom) "Tell Platz - Lake Lucerne"
 Watercolor on paper. Signed "R Dudley, 1876" in lower left. Interior view of Tell Platz, Lake Lucerne, Switzerland. 14"h x 20.5"w
400 – 600
- 3326
John McLure Hamilton (1853-1936, Pennsylvania, UK) "Sir William Gladstone"
 Watercolor on canvas. Unsigned. Artist biography and lot listing "Sir William Gladstone Reading by the Window" from previous auction. 11.75"h x 7.75"w
400 – 600
- 3327
Reuben Tam (1916-1991, Maine, Hawaii, California) "Fallen Rock Sunset 1"
 Pen and ink on paper. Signed "Tam" in lower right, titled "Fallen Rock Sunset 1" in lower left. Dated 1975 on reverse. 17.25"h x 14.25"w
800 – 1200
- ❖ 3328
Camille Hilaire (1916-2004, France, Germany) "Le Trio"
 Oil on canvas. Signed "Hilaire" in lower left. 10"h x 17.5"w
800 – 1000
- 3329
Sterling Strauser (1907-1995, Pennsylvania) Horse Racing
 Oil on board. Signed "Strauser" in upper left. 11.5"h x 23.5"w
200 – 400



3311



3319



3313



3320



3328

FINE ART



3330



3332

3331





3333

❖ 3330
Eliza Koch (19/20th century, France) Seated Girl
 Oil on relined canvas. Signed "E Koch" in lower left, along with frame tag. 23.5"h x 14"w
1000 – 2000

❖ 3331
Nicholaes Pietersz Berchem (1620-1683, Netherlands, Italy, Holland) "Approaching Storm"
 Oil on wood panel. Signed "BN" in lower right. Pastoral scene of cattle and sheep in period frame. 9"h x 11.25"w
2000 – 3000

❖ 3332
Edgar Hunt (1876-1955, United Kingdom) Ducks
 Oil on canvas laid on wood board. Signed "E Hunt" in lower right. "Biggs & Sons, Carvers, Gilders and Picture Restorers, London" label on verso. 7.5"h x 9.5"w
800 – 1000

❖ 3333
Andre Gisson (1921-2003, New York, Connecticut, France) Paris Street Scene
 Oil on canvas. Signed "A Gisson" in lower left. 12"h x 24"w
800 – 1000

❖ 3334
Seymour Lucas (1849-1923, United Kingdom) "The Lesson of Navigation"
 Oil on canvas. Signed "Seymour Lucas" in lower left. Titled on frame label. 16.5"h x 12.25"
400 – 600

3335
Illegible, Farming Cottage
 Oil on canvas. Signed, illegibly, in lower left. 26.5"h x 42.5"w, frame width 6.5"w
300 – 500



3334

FINE ART

3336

**Northern European School
(19th century) Interior
with Peasants**

Oil on wood panel. Unsigned.
Dark interior of three figures
gathered around a table.
6.5"h x 9"w

300 – 500

❖ 3337

**George A Newman
(1875-1965, Pennsylvania)
Snowy Farm with Bridge**

Oil on board. Signed "Geo A
Newman" in lower right.
4.5"h x 6.5"w

300 – 500

3338

**George A Newman
(1875-1965, Pennsylvania)
"Rocks and Coast"**

Oil on artist board. Signed,
titled, and dated "November
1958" on reverse. Inscribed
"Gift to Mrs. Andrew Berlay"
on reverse. 7.5"h x 9.25"w

200 – 400



3337

3339

**George A Newman
(1875-1965, Pennsylvania)
Water Wheel**

Oil on board. Unsigned.
9.75"h x 10.5"w

300 – 500

❖ 3340

**Wayne Morrell (1923-
2013, Massachusetts, New
Jersey) Snow Storm**

Oil on paper board. Signed
"Wayne Morrell" in lower left.
7.5"h x 9.5"w

300 – 500

3341

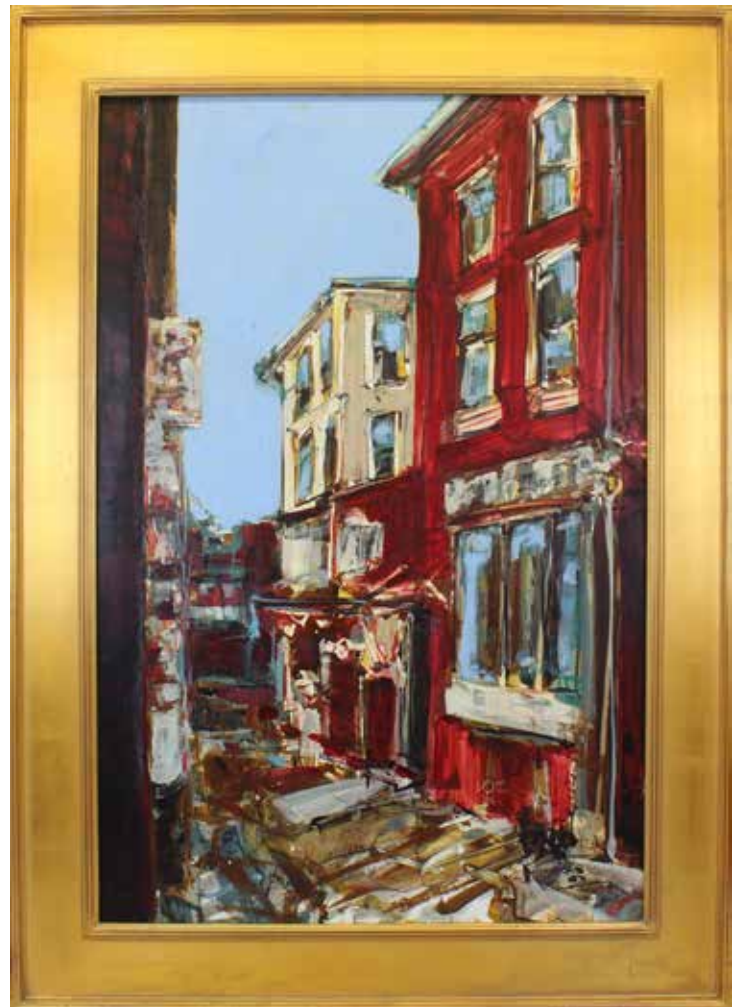
**Don Kaiser
(b 1958, Pennsylvania)
"Purple Sand"**

Oil on canvas. Signed
"D Kaiser" in lower left.
16"h x 20"w

400 – 600



3340



3343



3344

3342
David Ohlerking (b 1962, Pennsylvania, Nebraska) "Kensington, Philadelphia, Pa"
 Oil on board. Signed in lower right. Signed and dated "2011" on reverse. 24"h x 24"w
300 – 500

❖ 3343
David Ohlerking (b 1962, Pennsylvania, Nebraska) Philadelphia, Pa
 Oil on board. Signed in lower right. Signed, dated "2011" on reverse. 36"h x 24"w
400 – 600

❖ 3344
John Weygandt (1869-1951, Pennsylvania, Tennessee) "Old Grist Mill"
 Oil on board. Signed "J.H. Weygandt" in lower right. Artist name and title labeled on reverse. 17.5"h x 21.5"w
1500 – 2500

❖ 3345
Antonio Martino (1902-1988 California, Pennsylvania) "Fields"
 Pastel on paper. Signed "Antonio Martino" in lower left. Titled on reverse, on artist label, image is framed. 11"h x 15"w
400 – 600



3345

❖ 3346
Antonio Martino (1902-1988, Pennsylvania, California) River Bank
 Pastel on paper. Signed "A.P. Martino" in lower left. 18.5"h x 21.5"w
1000 – 1500



FINE ART



3348



3351



3352

3347
Giovanni Martino (1908-1997, Pennsylvania)
Church Steeple

Oil on canvas. Signed "Giovanni Martino" in lower left. 16"h x 20"w

600 – 900

❖ 3348
Ranulph Bye (1916-2003, Pennsylvania/New Jersey)
"Corn Stubble, Tinicum, PA"

Watercolor on paper. Signed "Ranulph Bye" in lower right. Titled and dated "December 23, 1981" on reverse. 9.75"h x 13.75"w

200 – 400

3349
Ranulph Bye (1916-2003, Pennsylvania/New Jersey)
Fall Stream

Watercolor on paper. Signed "Ranulph Bye" in lower right. 13.75"h x 20.75"w

300 – 500

3350
Ranulph Bye (1916-2003, Pennsylvania/New Jersey)
"Morning Chores"

Watercolor on paper. Signed "Ranulph Bye" in lower left. Marked "Farbotnik Farm", titled, and dated "July 17, 1972" on reverse. 20.75"h x 28.75"w

400 – 600

❖ 3351
Ranulph Bye (1916-2003, Pennsylvania/New Jersey)
"The Vanishing Depot"

Watercolor on paper. Signed "Ranulph Bye" in lower left. Green sided train station with red and white "Manville" station sign. Framed in barnwood style frame. 14.25"h x 20.75"w

400 – 600



3353



3354

❖ 3352

Ranulph Bye (1916-2003, Pennsylvania) "Antique Shop, Lambertville, NJ"

Watercolor on paper. Signed "Ranulph Bye" in lower right. Antique shop sign hangs on this corner Victorian house with white gingerbread molding and banister porch. 15.5"h x 20.5"w

600 – 900

❖ 3353

Ranulph Bye (1916-2003, Pennsylvania) "The Raritan Canal"

Oil on canvas. Signed "Ranulph Bye" in lower right. Titled and dated "Jan 1997" on reverse. 11.5"h x 15.5"w

1500 – 2500

❖ 3354

Frank F. English (1854-1922, Delaware/Pennsylvania/Indiana/Europe)

Watercolor on paper. Signed "F.F. English" in lower right. 22.5"h x 35.5"w

1000 – 2000



3356

3355

Walter Emerson Baum (1884-1956, Pennsylvania) "Branch Creek"

Oil on board. Signed "W.E. Baum 1915" in lower left. Signed and titled "Branch Creek, South of Sellersville" on reverse. 15.5"h x 19.25"w

1000 – 2000

❖ 3356

Walter Emerson Baum (1884-1956, Pennsylvania) "Brook Near Pleasant Valley"

Oil on board. Signed "W.E. Baum, 47" in lower right. Titled and dated "3/13/1947" on reverse. 11.5"h x 16.25"w

1500 – 2500

FINE ART

3360



3357

3361



❖ 3357

Walter Emerson Baum (1884-1956, Pennsylvania)
River Road

Oil on board. Signed "W.E. Baum" in lower left. Painting on reverse. Frame peeling, or chips, on upper center and throughout frame.
13.5"h x 15"w

2000 – 2500

3358

Churchill Ettinger (1903-1984, Vermont, New Jersey) Decoys

Watercolor on paper. Signed "Churchill Ettinger" in lower right. 21.5"h x 28.25"w

1000 – 1500

3359

Jay Connaway (1893-1970, Maine, Arizona, Indiana)
"Storm Spray in Shadow"

Oil on board. Signed "Connaway" in lower right. Titled on reverse. 17.5"h x 23.5"w.

1500 – 2500

❖ 3360

Robert Charles Gruppe (b 1944, Massachusetts)
"Sylvia at Dock, Gloucester"

Oil on canvas. Signed "Robert C Gruppe" in lower left. 25"h x 30"w

2000 – 4000

❖ 3361

Robert Charles Gruppe (b 1944, Massachusetts)
"Shrimpers"

Oil on canvas. Signed "Robert C Gruppe" in lower right. Titled and signed on verso. 30"h x 36"w

3000 – 5000

❖ 3362

Emile Albert Gruppe (1896-1978, Massachusetts)
"Morning Fog"

Oil on canvas. Signed "Emile A Gruppe" in lower right. Titled on reverse. 20"h x 24"w

3000 – 5000

❖ 3363

Jean Dufy (1888-1964, France)

Oil on canvas. Signed "Jean Dufy" in lower center. Arthur Lenars & Co, Paris label on reverse. 8.25"h x 20.75"w

8000 – 12000



3362



3363

FINE ART

❖ 3364

**David Burliuk (1882-1967,
New York, Ukraine, China)
Glouster Harbor**

Watercolor on paper. Signed
"Burliuk, 1926" in lower right.
Titled "Glouster, Mass" in lower
left. 9.75"h x 14.75"w

1000 – 2000

3365

**R John Foster (1908-1989,
Pennsylvania) Fall Quarry
-Large**

Oil on canvas. Signed "Foster"
in lower right. 23.5"h x 35.5"w

600 – 900

❖ 3366

**R John Foster (1908-1989,
Pennsylvania) Fall Quarry
(lrg)**

Oil on canvas. Signed "Foster"
in lower left. 22"h x 28"w

600 – 900

3367

**R John Foster (1908-1989,
Pennsylvania) Fall Quarry**

Oil on board. Signed "Foster" in
upper right. 18"h x 24"w

600 – 900

❖ 3368

**John E Berninger (1897-
1981, Pennsylvania) Near
Wehr Mill Dr, Allentown**

Oil on artist board. Signed
"John E Berninger" in lower left.
Labeled "...Wehr Drive, near
Parkland High School, painted
from under the bridge" reverse
of frame. Covered bridge
located on Wehr Mill Road,
Allentown, PA. 16"h x 20"w

1500 – 2500

3369

**John E Berninger (1897-
1981, Pennsylvania) Still
Life with Petunias**

Oil on canvas. Signed "John
E Berninger" in lower left.
16.25"h x 20.25"w

600 – 900

❖ 3370

**Alan Fetterman
(20th c. United States)
"From Lumberville Bridge,
1999"**

Oil on canvas. Signed "Alan
Fetterman" in lower right.
Titled on Bianco Gallery label
on reverse and dated 1999 by
the artist. 20"h x 25"w

600 – 900

❖ 3371

**Harry Leith-Ross
(1886-1973 Pennsylvania)
Red Barn and Silo**

Watercolor on paper. Signed
"Leith-Ross" in lower right.
Muted colors of noonday
sun across roadside barn and
outbuilding. 10.5"h x 14.25"w

600 – 800

3372

**Melville Stark (1903-1987,
Pennsylvania) Longport Key**

Oil on canvas. Signed
"M Stark" in lower right.
Marked "Mel Stark" &
"Longboat Key" on reverse of
canvas. Stark was a student of
W.E. Baum. 23.5"h x 29.5"w

800 – 1200

❖ 3373

**Thomas Otter
(1832-1890, Pennsylvania)
"Washington's
Headquarters,
Hartsville, PA"**

Oil on canvas. Signed with
artist's mark "TO" in lower
left. Labeled "Paper label
on reverse of canvas reads:
"Washington's headquarters,
near Hartsville, Bucks Co., PA.
Where Lafayette reported for
duty, august 1777 D".
5.75"h x 9.75"w

600 – 900



3364



3366



3368



3370



3373



3371

FINE ART

❖ 3374

Thomas Otter (1832-1890, Pennsylvania) House at Bethlehem, PA

Oil on canvas. Label "Paper label on reverse of canvas reads: 'A house at Bethlehem, PA., to which Lafayette was carried after he was wounded at the battle of Brandywine. Sept 1777'". 5.75"h x 9.75"w

600 – 900

3375

Hobson Pittman (1899-1972, Pennsylvania, North Carolina) Floral Still Life

Pastel on paper. Signed "For Walter and Edith, Hobson" in lower left. 9"h x 12"w

600 – 900

3376

Hobson Pittman (1899-1972, Pennsylvania, North Carolina)

Pastel on paper. Signed "Hobson Pittman" in lower left. 12"h x 8"w

800 – 1200



3374



❖ 3377

Hobson Pittman (1899-1972, Pennsylvania) "Late Afternoon"

Oil on canvas. Signed "Hobson Pittman" in lower right. Partial tag affixed to reverse. Believed to be the intersection of Lancaster Avenue and Belmont Avenue in West Philadelphia and the building at the center of the painting as the Empire Title & Trust Company. Compare the 1910 Bromley Atlas of Philadelphia, Plate 21 at <https://www.philageohistory.org/rdic-images/view-image.cfm/BRM1910.Phila.023.Plate21> 24"h x 30"w

3000 – 6000



3378



3379



❖ 3378
Henry Gasser (1909-1981, New Jersey) Double-Sided Landscape

Double-sided watercolor on paper. Signed "H Gasser" in lower right. Double-sided frame for easel display. 12"h x 15.25"w

1500 – 2500

❖ 3379
Walter Emerson Baum (1884-1956, Pennsylvania) Winter Farmhouse

Oil on canvas. Signed "W.E. Baum" in lower right. Snowy winter view of Bucks County stone farmhouse. 16"h x 20"w

1500 – 2500

❖ 3380

Walter Emerson Baum (1884-1956, Pennsylvania) "Blue Mountains, Lehigh County, PA"

Oil on artist board. Signed "WE Baum" in lower right. Titled on reverse. 8"h x 10"w

2000 – 3000



FINE ART

❖ 3381

**Walter Emerson Baum
(1884-1956, Pennsylvania)
"Autumn"**

Oil on canvas. Signed "Baum" in lower right. Titled and signed on verso. "Bought by Bert 1955 from WEB in old studio Green St" in pencil in lower right of canvas stretcher. 10"h x 14"w

1500 – 2000



3382

**Walter Emerson Baum
(1884-1956, Pennsylvania)
"Manayunk Street"**

Oil on board. Signed "WE Baum" in lower left. Titled and signed on reverse on "The Philadelphia Sketch Club" label. 11.5"h x 15.5"w

1500 – 2000



❖ 3383

**Kenneth Nunamaker
(1890-1957,
Pennsylvania, Ohio)
Fall Landscape**

Oil on artist board. Signed "K Nunamaker" in lower left. 9.5"h x 13.5"w

3000 – 5000





❖ 3384

**Kenneth Nunamaker
(1890-1957,
Pennsylvania, Ohio)
White Farmhouse**

Oil on artist board. Signed
"K Nunamaker" in lower
left. 7.75"h x 11.5"w

5000 – 10000



❖ 3385

Samuel Scott (1702-1772, United Kingdom) "View on the Thames, Temple Stairs and Old Savoy"

Oil on canvas. Artist's signature "S. Scott" and title on Royal Academy label adhered to original canvas stretcher. Secondary label "P & D Colnaghi & Comp., Ancient and Modern, Print Warehouse, 13 & 14 Pall Mall East" on reverse of canvas stretcher. Documentation from Pennsylvania Academy of the Fine Arts on reverse. Canvas has been relined on original stretchers. 26.75"h x 43.5"w

10000 – 20000

FINE ART



❖ 3386

John Constable (1773-1837, United Kingdom, England)
"On the River Stour"

Oil on canvas. Unsigned. Frame inscribed with artist name, dates and title, "On the River Stour" on frame tag. 21.25"h x 17.25"w
5000 – 10000



❖ 3387

Giuseppe Contantini (1844-1894, Italy)
Blind Man's Bluff

Oil on wood board. Signed "G Constantini" in lower right. 11.25"h x 15.5"w
4000 – 6000

❖ 3388

B Delaroche, Three Seated at the Table

Oil on canvas. Signed "B Delaroche" in lower right. 17.5"h x 15"w
2000 – 3000





3390

3389
Lombard School (17th century) Dream of Scipio

Oil on canvas. Relined.
 Unframed. 67"h x 111"w
1000-2000

❖ 3390
Attributed to Clemente Boccardo (Il Clementone) (1620-1658, Italian) Corpus Domini

Oil on canvas. Signed "MENS ARDVS" and dated illegibly, lower left. Unframed. 121"h x 76"w
1000 – 2000

❖ 3391
R John Foster (1908-1989, Pennsylvania) Barn

Oil on canvas. Signed "Foster" in lower right. 16"h x 36"w
800 – 1200

❖ 3392
R John Foster (1908-1989, Pennsylvania) Victorian Church

Oil on canvas. Signed "Foster" in lower right. 18"h x 34"w
800 – 1200



3391



3392

3393
R John Foster (1908-1989, Pennsylvania) Village, Street- Autumn

Oil on canvas. Signed "Foster" in lower right. 30"h x 40"w
1000 – 1500

3394
R John Foster (1908-1989, Pennsylvania) Sycamore

Oil on canvas. Signed "Foster" in lower right. 30"h x 20"w
600 – 900

❖ 3395
William Ladd Taylor (1854-1926, Massachusetts)

Oil on canvas. Signed "W.L. Taylor" in upper left. 29.5"h x 19.5"w
800 – 1000

3395



FINE ART

3396

**William Ladd Taylor
(1854-1926, Massachusetts)**

Watercolor on paper. Artist's estate stamp in lower right.
13.25"h x 9.75"w

600 – 800

3397

**William Ladd Taylor
(1854-1926, Massachusetts)
Illustration**

Watercolor illustration. Signed and dated "W.L. Taylor, 91" in lower right. 25.5"h x 18.75"w

600 – 800

❖ 3398

**Walter Emerson Baum
(1884-1956, Pennsylvania)
Red House in Winter**

Oil on board. Signed "Baum" in lower right. 13.5"h x 16.5"w

2000 – 2500

3399

**Walter Emerson Baum
(1884-1956, Pennsylvania)
"Main Street, New Jersey"**

Oil on board. Signed and titled "W.E. Baum, Main St" in lower left. Signed and titled on reverse. Unique to Baum an urban scene of main street, New Jersey. 20"h x 16"w

1500 – 2500

❖ 3400

**Walter Emerson Baum
(1884-1956, Pennsylvania)
"Farm Esemble"**

Oil on board. Signed "W.E. Baum" in lower right. Titled and location "Painted 2 miles west of Palm and 1 mile east of Bally, Pa" on reverse. 11.75"h x 15.5"w

1500 – 2500



3398



3400

❖ 3401

**Walter Emerson Baum
(1884-1956, Pennsylvania)
"Church on the Hill, 1947"**

Oil on board. Signed "W.E. Baum" in lower right. Titled on reverse. 17.25"h x 18.25"w

2000 – 2500





3402

❖ 3402

**Helene McKinsley Herzbrun
(1922-1984, United States)**

Oil on canvas. Signed and dated
"McK/Herzbrun '72" in lower
left. 50"h x 40"w

1000 – 1500

❖ 3403

**George Segal
(1924-2000, New Jersey)
Nude and Green Chair**

Pastel on paper. Signed
"G Segal, 12-63" in lower right.
Inscribed "To Lynn" in lower
left. Offered from the model's
collection. 17.5"h x 11.5"w

1500 – 2500

3403



❖ 3404

**George Segal
(1924-2000, New Jersey)
Pink, Arms and Legs**

Pastel on paper. Signed
"For Lynn, George Segal, '65" in
lower middle. Offered from the
model's collection. 18"h x 12"w

1500 – 2500

3404



FINE ART



3406

3405

George Segal (1924-2000, New Jersey) Pink, Profile

Pastel on paper. Signed "For Lynn, George Segal '64" in lower right. Inscribed "For Lynn With Pleasure and Pain, George Segal, Sept 1964" on verso. Offered from the model's collection. 18"h x 12"w

1500 – 2500

❖ 3406

George Segal (1924-2000, New Jersey) Reclining Nude

Pastel on paper. Signed "G Segal, '62" in lower right. Offered from the model's collection. 18"h x 12"w

1500 – 2500

❖ 3407

George Segal (1924-2000, New Jersey) "Green Gallery, Lynn"

Pastel on paper. Signed "George Segal, 1964" in lower middle. Inscribed by artist "For Lynn with pleasure and pain" on verso of frame. 18"h x 12"w

1500 – 2500



3407

❖ 3408

Irma Stern (1894-1966, South Africa, Europe) Dasies

Oil on board. Signed "Irma Stern, 1945" in upper left. 24"h x 20"w

20000 – 30000

❖ 3409

D Eleinne Basa (b. 1967, New Jersey) "Harbor Moonrise"

Oil on linen. Signed in lower right. Titled and signed on reverse. 36"h x 30"w

1500 – 2500

❖ 3410

Charles Dye "Salesman"

Illustration on board. Signed "Charles Dye" in lower right. 22"h x 19.5"w

3000 – 5000

3411

Sir Arthur Stockdale Cope (1857-1940, United Kingdom) Portrait of Mrs Geo W. Palmer

Oil on canvas. Signed "Cope, 1905" in lower left. "Eleanor Barrett Palmer, Born 1854 - Died 1929" on frame label. Eleanor is seated with her black spaniel "Rajah". 49.5"h x 39.5"w

600 – 800

3412

Student of Pierre Mignard (1612-1695, French) Portrait of a Gentleman

Oil on canvas. Signed "Aetatis Svae '73, Ant Dt 1687" in middle right. Unframed. 30"h x 25.25"w

300 – 500



3413

Pair of Portraits

Oil on canvas. Female portrait signed "J.H.S. 1839" in lower right. Gentleman's portrait is unsigned. Each painting 29.5"h x 24.5"w

400 – 600

3414

Carved, Gilded Frame

Hand carved, gilded frame. One missing floret in upper left corner. 13.75"h x 10.75"w

200 – 400

3415

**Emlen Etting (1905-1992)
"Man with Hat"**

Gouache on paper. Signed "Etting" in lower right. 19.5"h x 16"w

400 – 600



3409



3410

FINE ART



3422



3423

3416

**David Burliuk (1882-1967.
New York, Ukraine, China)
Portrait**

Graphite, pen and ink. Dated and signed "14 Nov. 1930: Burliuk (Geets)" in upper left. 11.5"h x 8.25"w

500 – 700

3418

**Betty Minnucci (20/21st c., Pennsylvania)
"The Grand Canyon"**

Pastel on paper. Signed "B Minnucci" in lower left. Titled and signed on reverse. 17.5"h x 23.25"w

200 – 400

3420

**Betty Minnucci (20/21st c., Pennsylvania)
"Crock and Fruit"**

Pastel on paper. Signed "B Minnucci" in lower right. Titled and signed on reverse. 8.5"h x 7.25"w

200 – 400

❖ 3422

**Betty Minnucci (20/21st c., Pennsylvania)
"Farmhouse in Winter"**

Oil on board. Signed "B Minnucci" in lower right. Titled on reverse, painting is framed. 8"h x 10"w

400 – 600

3417

**Norval Busey (b 1885, New York)
Matador**

Watercolor on paper. Signed "Busey" in lower right. 17.5"h x 8.25"w

300 – 500

3419

**Betty Minnucci (20/21st c., Pennsylvania)
"Old Crock"**

Pastel on paper. Signed "B Minnucci" in lower right. Titled and signed on reverse. 13"h x 9.75"w

200 – 400

3421

**Betty Minnucci (20/21st c., Pennsylvania)
"Fall River Scene"**

Pastel on paper. Signed "B Minnucci" in lower right. Titled and signed on reverse. 9.75"h x 13.25"w

200 – 400

❖ 3423

**Christopher Willett (b.1959, Pennsylvania)
"Gloucester Mass"**

Oil on board. Signed "Christopher Willett" in lower right. Titled, signed and dated "2007" on verso. 24"h x 24"w

1000 – 1500



3430

3424

**Christopher Willet
(b.1959, Pennsylvania)
"Buckingham Farm"**

Oil on board. Signed
"Christopher Willet" in lower
right. 4.75"h x 6.5"w

200 – 400

3425

**Christopher Willet
(b.1959, Pennsylvania)
"Upper Bucks Co."**

Oil on board. Signed
"Christopher Willett" in lower
right. 5.75"h x 4.75"w

200 – 400

3426

**Christopher Willett (b.1958,
Pennsylvania) "Mill Along
Neshaminy Creek"**

Oil on board. Signed
"Christopher Willett" in lower
right. Titled and signed on
reverse. 4.75"h x 6.5"w

200 – 400

3427

**Christopher Willett
(b.1958, Pennsylvania)
"Doylestown Farm"**

Oil on board. Signed
"Christopher Willett" in lower
right. Titled and signed on
reverse. 4.75"h x 6.5"w

200 – 400

3428

**Christopher Willett
(b.1958, Pennsylvania)
Amish Carriage**

Oil on board. Signed
"Christopher Willett" in lower
left. 3.75"h x 4.75"w

200 – 400

3429

**Henry Gasser (1909-1981,
New Jersey) Collection
from Guide to Painting**

Watercolor on paper.
Collection of watercolor
sketches (7) and book, Henry
Gasser's Guide to Painting.
1.75"x 2.5" – 4.25" x 3.25"

600 – 800

3430

**George A Newman
(1875-1965, Pennsylvania)
"The Farm Lane, Pocono
Mountain"**

Oil on board. Signed "Geo A
Newman" in lower left. Titled
on reverse. 11.5"h x 15.5"w

300 – 500

3431

**George A Newman
(1875-1965, Pennsylvania)
"A Vermont Settlement"**

Oil on board. Signed "Geo A
Newman" in lower right.
Titled, signed and dated
"July 1951" on reverse.
9.75"h x 7.75"w

300 – 500

3432

**Johann Sperl (1840-1914,
Germany) Tavern Scene**

Oil on board. Signed "S Sperl"
in lower left. 9.25"h x 12.5"w

600 – 800

❖ 3433

**Heinie Hartwig (b. 1937,
California) Mountain Top**

Oil on board. Signed
"Heinie Hartwig" in lower right.
19.5"h x 29.5"w

800 – 1200

❖ 3434

**Ray Overpeck
(b.1933, Pennsylvania)
"October Snow"**

Oil on canvas. Signed
"R Overpeck" in lower right.
Titled and signed on verso.
14"h x 18"w

800 – 1200



3433



3434

FINE ART



3435

❖ 3435

**Ray Overpeck
(b.1933, Pennsylvania)
"Springhouse in Winter"**

Oil on canvas. Signed
"R Overpeck" in lower right.
Titled and signed on verso,
painting is framed. 16"h x 20"w
800 – 1200

3436

**Ray Overpeck
(b.1933, Pennsylvania)
"Village of Hosensack"**

Oil on canvas. Signed
"R Overpeck" in lower right.
Titled and signed on verso.
11"h x 14"w
800 – 1200

3437

**Ray Overpeck (b.1933,
Pennsylvania) "The
Bending Tree"**

Oil on canvas. Signed
"R Overpeck" in lower right.
Titled and signed on verso.
11.5"h x 15.5"w
800 – 1200

3438

**Ron Johnson (b 1947,
North Carolina, Ohio)
Boats at Dock**

Oil on canvas. Signed
"Johnson 07" in lower left.
15.25"h x 19.25"w
300 – 500

3439

**Ernest Marche (1864-1932,
France) Landscape**

Oil on canvas. Signed
"E Marche" in lower left.
21"h x 31.25"w
400 – 600

3440

**William Banks Fortescue
(1850-1924, England)
Girl in Blue**

Oil on canvas. Signed
"W.B.Fortescue" in upper left.
35.5"h x 27.5"w
1000 – 2000

3441

Illegible, Seated Dancer

Oil on board. Signed in
lower left. McCarty Gallery,
Philadelphia label on reverse.
32"h x 24"w
300 – 500

3442

**Peter Hayward (1905-1993,
New York, Hawaii)
Sidewalk Rollerskating**

Oil on canvas. Signed
"Peter Hayward" in lower left.
Cracking in paint with some
lose. 28"h x 22.5"w
500 – 700

❖ 3443

**Peter Max (b 1937,
New York, Germany)
"Walking in the Reeds"**

Serigraph, limited edition
29/300 numbered in lower left,
framed in custom painted and
neon detailed frame. Signed
"Max" in lower right. Image
size 29"h x 39"w, outer frame
43"h x 53"w
1500 – 3000



3443

Terms & Conditions of Sale

Alderfer Auction, 501 Fairgrounds Road, Hatfield, PA 19440. 215.393.3000

Buyers must register for a bidding number by giving name, address, phone number, and identification acceptable to us. Please show your bidding number to the auctioneer after each purchase you make.

The highest bidder shall be the buyer, and if any dispute arises between two or more bidders, the auctioneer shall decide the buyer or immediately put the item up for sale again. In the event of a tie between online bidder and the floor bidder, the floor bidder will take precedence. The auctioneer's decision will be binding and final.

Some lots are offered subject to a reserve, which is a confidential minimum price below which such a lot will not be sold.

The record of sale, kept by the auctioneer and clerk, will be taken as absolute and final in all disputes.

Catalog Auctions will include a Buyer's Premium of 20% with a 3% discount if paid with cash or acceptable check. Acceptable forms of payment for all in-house purchases are cash, bank check, AmEx, Visa, MasterCard, Discover and PayPal. For online bidders, the Buyer's Premium is 25%. Discounts do not apply to online purchases regardless of the form of payment.

Items purchased may be removed once payment is made. All items purchased by in-house bidders should be removed on the day of the auction. Online buyers who wish to pick up their purchases shall not do so until the Monday following the day of the auction.

Storage fees for any items left at the Auction Center for more than two weeks following the auction date will incur storage fees at a rate of \$10.00 per lot, per week regardless of the size or value of the lot. Storage fees will begin on the 15th day regardless of payment status.

Abandoned merchandise of unpaid items still remaining at our Auction Center 30 calendar days after the auction date will be considered abandoned and will be consigned to a future auction without additional notice to the purchaser.

Announcements made day of Auction take precedence over printed, electronic and verbal communication.

Absentee/Phone Bids

For those unable to attend the auction, Alderfer Auction offers the absentee and phone bid services as a convenience to our patrons.

- Everyone leaving an absentee/phone bid must be willing to leave their credit card number to assure payment of a successful bid(s) is received by the end of the next day following an auction.
- Minimum absentee bid is \$50.00. All bids will open at \$50.00.
- Phone bids will open at \$250 or half of published estimate.
- Illegible bid(s) will be disregarded.
- Applicable sales tax will be added to the sales total unless a tax-exempt number is on file in our office by the day of the auction.
- Applicable Buyer's Premium will be added to each purchase.
- All successful bid(s) requested to be shipped to the buyer will be sent by an in-house or third party shipper and billed by the shipper.
- Buyer is responsible to make shipping arrangements.
- Bids are executed in competition with the audience on an alternate basis. Due to uncertainties of bidding, a lot may sell to the

audience for the same amount authorized by the absentee bid. To avoid this possibility, the absentee bidder may authorize Alderfer Auction to increase their bid by one increment by placing a (+) sign beside the bid price.

- Merchandise is to be removed from the Auction Center within two weeks following the auction.
- **Storage fees:** Any items left at the auction center for more than two weeks following the auction date will incur storage fees at a rate of \$10.00 per lot, per week regardless of the size or value of the lot. Storage fees will begin on the 15th day regardless of payment status
- Alderfer Auction offers the absentee/phone bid service as a convenience to our patrons who are unable to attend the auction.
- Alderfer Auction will not be held responsible for error or failure to execute the bid.
- All items are sold as is without warranty or guarantee.

Glossary of Terms

If we say "circa" a certain date, then it was made within 25 years of that date.

Measurements are given within 1" of actual size.

If we say "no defects observed", we mean that upon visual inspection we saw no defects.

Authorship*

Name of Artist – Indicates the work, in our best judgment, is by the named artist. *There is no guarantee the work is by the named artist.

Attributed to * - In our best judgment, the work may be by the artist.

Circle of * - In our best judgment, the work may be by the artist and closely related to the artist's style.

School of * - In our best judgment, a work by a pupil or follower of the artist.

In our best judgment, a copy of the known work of the artist.

In the manner of * - This painting represents the style of the names artist but was painted at a later date; the authorship is unknown.

Signature

The signature, inscriptions and dates are transcribed in print as they appear and are located as follows:

- SLL: Signed Lower Left
- SLR: Signed Lower Right
- SUL: Signed Upper Left
- SUR: Signed Upper Right
- SLC: Signed Lower Corner
- SUC: Signed Upper Corner

If we state "signed" in our opinion, the signature is of the named artist.

If we state "bears signature" in our opinion, the signature might be that of the artist, but we make no guarantee that work is by the named artist.

WAF = With All Faults

For Furniture

If we say "Chippendale Mahogany Chest of Drawers," we represent that the piece was made during that period.

If we say "Chippendale Style Mahogany Chest of Drawers," we represent that the piece looks like the period mentioned, but it was crafted at a later date.

Bid Increment Table

Minimum Dollar Amount Maximum Dollar Amount
Bid Increment

from US \$0 to US \$49 US \$5

from US \$50 to US \$199 US \$10

from US \$200 to US \$499 US \$25

from US \$500 to US \$999 US \$50

from US \$1,000 to US \$1,999 US \$100

from US \$2,000 to US \$4,999 US \$250

from US \$5,000 to US \$9,999 US \$500

from US \$10,000 to US \$19,999 US \$1,000

from US \$20,000 to US \$49,999 US \$2,500

from US \$50,000 to US \$99,999 US \$5,000

from US \$100,000 to and above Auctioneer's Discretion

Variations from the bid Increment Table are at the discretion of the auctioneer.

Directions & Lodging

Free shuttle service from Lansdale Train Station available. Call Alderfer's for details. 24 hour notice required.

From PA Turnpike

Take Exit 31 "Lansdale" off 476. Left on Rt. 63 (Sumneytown Pike). Left at light (Forty Foot Rd). 3 miles to Clemens Rd. Left on Clemens Rd. Right on Fairgrounds Rd.

From Philadelphia

Rt. 309 North to Montgomeryville. Left on Rt. 463 (Cowpath Rd). 4 miles to Fairgrounds Rd. Left on Fairgrounds Rd.

From Allentown

Rt. 309 South to Souderton. Exit (Rt. 113). Right on Board Street. 3 miles to Cowpath Rd. Left on Cowpath Rd. approx. 2 miles to Fairgrounds Rd. Right on Fairgrounds Rd.

Lodging:

Holiday Inn

1750 Sumneytown Pike

Route 63 & PA Turnpike

Kulpsville, PA 19443

215.368-3800

Marriot Courtyard

1737 Sumneytown Pike

Route 63 & PA Turnpike

Lansdale, PA 19446

Joseph Ambler Inn

Bed & Breakfast

105 Horsham Road

Montgomeryville, PA 18936

215-362-7500

Absentee **Phone Bid Form** (check one)

_____ China & Glassware _____ Jewelry _____ Box Lots _____ Artwork
 _____ Furniture _____ Hallway Items _____ Specialty _____

A separate bid form must be filled out for each category involved.

Lot/Table Number	Description	Bid Price (+) w/o Buyer's Premium
1		
2		
3		
4		
5		
6		
7		
8		

Bidder Number (to be supplied by Alderfer's) _____ Name _____

Email _____ Address _____

City, State, ZIP _____

Payment Information: Home Phone _____

Credit Card: MC _____ VISA _____ Discover _____ AMEX _____ Additional Phone _____

Card Number: _____

Credit Card Expiration Date: _____

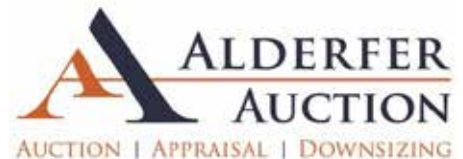
I am unable to attend the auction on _____ and therefore request that you bid on my behalf on the above lot(s) up to but not exceeding the amount(s) listed. I acknowledge the following conditions of sale and agree to adhere to the same:

- Everyone leaving an absentee/phone bid must be willing to leave their credit card number to assure payment of a successful bid(s) is received by the end of the next day following an auction.
- **Minimum absentee bid is \$50.00. All bids will open at \$50.00.**
- **Phone bids will open at \$250 or half of published estimate.**
- Illegible bid(s) will be disregarded.
- Applicable sales tax will be added to the sales total unless a tax-exempt number is on file in our office by the day of the auction.
- Applicable Buyer's Premium will be added to each purchase.
- All successful bid(s) requested to be shipped to the buyer will be sent by an in-house or third party shipper and billed by the shipper. Buyer is responsible to make shipping arrangements.
- Bids are executed in competition with the audience on an alternate basis. Due to uncertainties of bidding, a lot may sell to the audience for the same amount authorized by the absentee bid. To avoid this possibility, the absentee bidder may authorize Alderfer Auction to increase their bid by one increment by placing a (+) sign beside the bid price.
- Merchandise is to be removed from the Auction Center within two weeks following the auction.
- Storage fees: Any items left at the auction center for more than two weeks following the auction date will incur storage fees at a rate of \$10.00 per lot, per week regardless of the size or value of the lot. Storage fees will begin on the 15th day regardless of payment status
- Alderfer Auction offers the absentee/phone bid service as a convenience to our patrons who are unable to attend the auction.
- Alderfer Auction will not be held responsible for error or failure to execute the bid.
- All items are sold as is without warranty or guarantee.

By signing below, I agree to the Terms and Conditions of this Absentee/Phone Bid Form.

Signature

Date





AlderferAuction.com
FineArt@AlderferAuction.com

