



THE IRISH



SEA



TWO-DAY EVENT

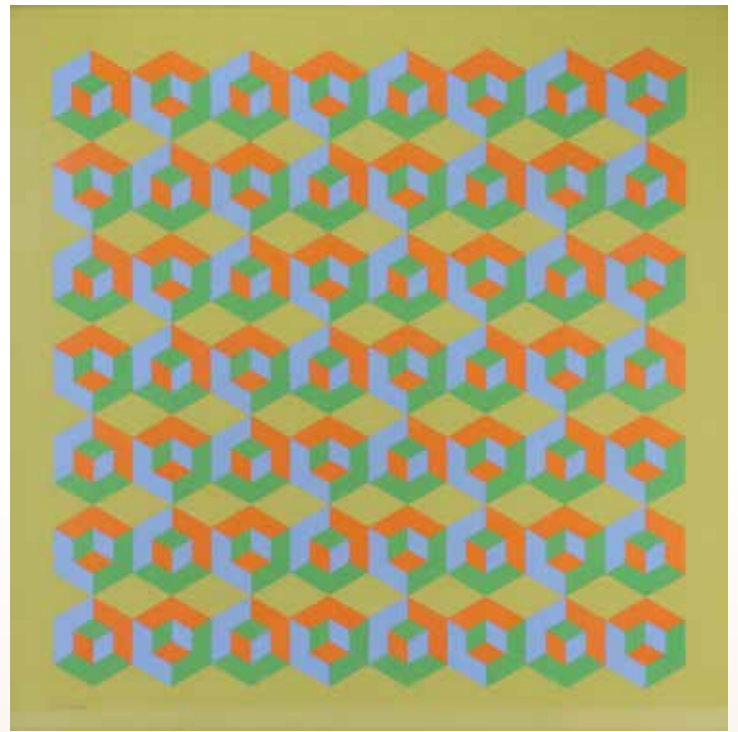
Collector's Auction
December 11 at 10AM

Fine & Decorative Arts Auction
December 12 at 10AM

ALDERFER
AUCTION

AUCTION | APPRAISAL | DOWNSIZING | REAL ESTATE

DE



Front Cover: 3006 (map) and 3080 (watch)
Inside Front Cover (Clockwise from top right): 3302, 3116, 3142, 3169, 3223, 3097, 3279, 3300

AUCTION DETAILS

PREVIEWS

Collector's and Fine & Decorative Arts

Saturday, December 7th from

9:00AM – 12:00Noon

Monday, December 9th from

9:00AM – 4:00PM

Tuesday, December 10th from

9:00AM – 4:00PM

Wednesday, December 11th from

9:00AM – 4:00PM

Thursday, December 12th at 8:00AM

DAY 1

Collector's Auction

Wednesday, December 11th at 10:00AM

DAY 2

Fine & Decorative Arts Aucion

Thursday, December 12th at 10:00AM

**All times are Eastern Standard Time.*

INQUIRIES

AlderferAuction.com

FineArt@AlderferAuction.com

ConditionReport@AlderferAuction.com

[Online Absentee/Phone Bid Form AlderferAuction.com](http://OnlineAbsentee/PhoneBidFormAlderferAuction.com)

215.393.3000 Phone

❖ *Indicates lot is pictured in catalog.*

INVITING FINE & DECORATIVE ART CONSIGNMENTS FOR SPRING/SUMMER 2020



Like Us at [@AlderferAuction](https://www.facebook.com/AlderferAuction)

Members of: NAA & PAA; Designations CAI, MPPA & CES; USPAP Compliant.

AY002260



Download our Free App

501 Fairgrounds Road | Hatfield, Pennsylvania 19440 | AlderferAuction.com | 215-393-3000

COLLECTOR'S

Wednesday, December 11th **Live & Online** at 10:00 AM

DAY 1



DISCOVERY ART

Wednesday, December 11th
Live at 9:00 AM

Over 250+ Works of Art 19th, 20th & 21st Century artists working in oil, watercolor, pastel & mixed media. Many works by listed lesser known artists, works needing definitive attribution & some in need of restoration or framing.





❖ 3001

1965 Willy's Jeep FC-150 Four Wheel Drive

VIN #: 65548 25528. Stake-body truck. 52,289 miles, 4WD, gasoline fuel type, with transmission 4-speed manual, 4WD High/Low, 2WD High. Green/Cream color scheme. Lighter green and gray pinstripe and "Trees, Energy, Save" logo. Stake-body, Cab-over design. Brakes are not working. Wooden frame supports have been replaced and restored as well as stake-body timbers. Currently not running.

10000 – 15000

AUTOMOBILES



❖ 3002

1967 Mercury Cougar

VIN #: 7F91C649585. Coupe, 302 V-8 Engine with Select Shift Merc-O-Matic transmission, RWD, gasoline fuel type, Nordic Blue color, and Deluxe wheel covers. A true "survivor" car family owned since 1967. In 1976, the seller's father transferred it to the seller for \$1. In the early 80's the engine was replaced due to a bad piston and replaced with a 302 motor. Multiple touch up spots on paint. 3 small dents on roof. The car was taken off the road soon after, garage kept ever since. Musty. Currently not running. The car has been donated and proceeds benefit Muhlenberg College in Allentown, Pa.

8000 – 12000

❖ 3003

1924 Ford Model T

VIN #: 9171242. Touring trim level with manual transmission. Previous owner bought it in his late teens and is currently 94 years old. Second-owner car. Top is intact but shows typical crackling. Seats show significant wear. Vintage jack included. Dash has been painted over but Dealer tag still visible. Reads "Sold by Yocum Bros. Ford. Lansdale PA". Original Ford wheel center caps intact. Crank present. Missing radiator cap. Spare tire and rim present. Currently not running.

2000 – 4000



HISTORICAL



❖ 3004

Map of Virginia, Maryland, Pennsylvania and New Jersey by John Senex – 1719

Copper plate, hand-colored engraved map titled "A New Map of Virginia, Maryland and the Improved Parts of Pennsylvania; New Jersey" by John Senex published in London in 1719. Map is matted and framed and measures 20" x 22.5" (sight). Frame measures 25.75" x 28.25". Map exhibits some toning, light foxing and presents a central horizontal fold. Reference: Cumming #293 and Tooley #104

1000 – 2000



HISTORICAL

❖ 3005

Map of North and South America by John Senex – 1719

Copper plate, hand-colored engraved map titled "A New Map of North and South America from the Latest Observations" by John Senex published in London in 1719. Map shows California as an island. Map is matted and framed and measures 19.75" x 22.75" (sight). Frame measures 25.5" x 28.25". Map exhibits some toning, light foxing and presents a central horizontal fold and some evidence of mold at center left. Reference: Tooley #81. Wagner #520 and McLaughlin#193

800 – 1200



3006



3008



3007



3009



3010



3011

❖ 3006

Map of Flintshire, England by John Speed – 1612

Copper plate, hand-colored engraved map titled “Flint-shire” by John Speed and published by John Sudbury and George Humbell in 1612. Map shows insets of St Asaph and the Town of Flint and an illustration of St Winifred’s Well. Map is matted and framed and measures 15.25" x 20" (sight). Frame measures 22.5" x 27.5". Map exhibits overall toning and light foxing.

200 – 300

❖ 3007

Map of Central Europe by Pierre Du Val – 17th Century

Copper plate, hand-colored engraved map titled “Carte de Savoye et des pais de Genevois, Faussigni, Chablais, Morienne, et Tarentaise; Carte de Savoye et des pais de Genevois, Faussigni, Chablais, Morienne, et Tarentaise” by Pierre Du Val and printed by Pierre Mariette. Map includes sections of south-eastern France, Northern Italy and sections of Switzerland. Map is matted and framed and measures 15.75" x 20.5" (sight). Frame measures 18.25" x 23". Map exhibits vertical center fold, some foxing/toning and some water staining at edges.

200 – 300

❖ 3008

Map of the Eastern Mediterranean and Black Sea Areas by Claude Buy De Mornas – 1762

Copper plate, hand-colored engraved map titled “Carte Generale Pour L’Intelligence De L’Histoire Profane Du Quatrieme Age” by Claude Buy De Mornas. Map was published for the Atlas Historique et Geographique. Map is matted and framed and measures 15.5" x 21.75" (sight). Frame measures 19" x 25.5". Map exhibits vertical center fold, some light foxing/toning and some molding on mount at left.

200 – 300

❖ 3009

Map of Northern Italy by Abraham Ortelius – 1608

Copper plate, hand-colored engraved map titled “Italia Gallica, Sive Gallia Cisalpina” by Abraham Ortelius. Map was published for the Theatrum Orbis Terrarum. Map is matted and framed and measures 13.5" x 18.75" (sight). Frame measures 16.5" x 21.5". Frame presents no glass and map exhibits vertical center fold, some slight surface abrasions and some light foxing/toning.

200 – 300

❖ 3010

Early 19th Century Map of Persia

Map titled “A New Map of Persia from the latest Authorities” by John Cary, engraver, 1801. Framed map measures 18" x 20.5" sight with frame measuring 25" x 27". Map exhibits vertical fold repair with slight tear. Map exhibits good color and was published for the New Universal Atlas.

200 – 300

❖ 3011

Late 18th Century Map of Hungary

Map titled “Carte De La Hongrie” by Dezauche, 1780. Framed map measures 19.5" x 26.5" (sight) with frame measuring 27.5" x 34.5". Map exhibits hand coloring and some toning. Map includes Hungary but also includes areas of Germany, Poland, Russia, Ukraine, Bulgaria, Romania, Albania, Greece and Romania.

200 – 300

HISTORICAL



❖ 3012

Framed 19th Century Grouping of Items Related to Pigeon Capture

Framed grouping of 19th century items related to the capture of pigeons in Pennsylvania. Shadowbox frame measures 22.5" x 17.5" and presents "bubble" glass cover that contains 9 items including whistle, boxes, lines and net making/repair devices, many belonging to Jacob Weisel, a pigeoneer from Quaker Hill, six miles from Williamsport, Pennsylvania. Collection was gathered by Charles Hoffman Eldon a taxidermist from Williamsport, Pa (as indicated by plaque) and presented to Colonel Henry W. Shoemaker (1880-1958) American folklorist, historian, diplomat, writer, and conservationist. Request detailed listing of frame contents.

600 – 900



❖ 3014

Germantown Pennsylvania Indenture – Christopher Witt – 1728

Indenture on vellum dated April 20, 1728 between Christopher Witt of Germantown, "Dr. of Physick; Surgery" to Christopher Warmer Jr., Blacksmith for plot of land in Germantown. Document presents signature of Witt at bottom on obverse and on reverse once. Christopher Witt (1675-1765) was a physician, scientist, botanist, clock maker, artist, musician, and astronomer in Germantown and a member of the theosophical colonists that colonized the Germantown area. Document measures 12.75" x 13.5" and exhibits some folds and toning.

500 – 800

❖ 3013

Quaker Archive Related to Pennock Family

Small archive related to Pennock family housed in tin box measuring 9.75" x 12.75" x 6" with painted identification at top "George Pennock, No.2". Box contains; 1.) Photograph album (16-cabinet cards and 18-CDV's) many with Pennock identifications on reverse. 2.) Quaker marriage intent document for George Pennock and Sarah Sellers dated November 5, 1835 at the Upper Darby, Pennsylvania Friend's Meeting House signed by 65 members of the congregation. 3.) Golden Wedding Anniversary document dated 1885 for George and Sarah Pennock dated 1885 presenting 93 signatures. 4.) Notes and research related to Pennock family.

200 – 400





❖ 3015

Germantown Pennsylvania Indenture – 1703

Indenture on vellum dated January 20, 1703 between Mattias van Ribber to Christopher Warmer for 50 acres of land in Germantown, Pennsylvania. Reverse of document presents signature of Francis Daniel Pastorius (1651-1720) German educator, lawyer, poet, and founder of Germantown, Pennsylvania. Document measures 10.25" x 12.5" and exhibits some folds (with repairs), toning, and slight edge chip at upper left.

400 – 600

❖ 3016

Quaker Marriage Certificate – Philadelphia 1716

Marriage certificate (Quaker) between Samuel Jacob (mariner) and Mary Plumley of Philadelphia dated May 24, 1716. Document is signed by Samuel, Mary and 16 others. Paper document measures 16" x 12.75" and exhibits folds and repaired splits.

200 – 400

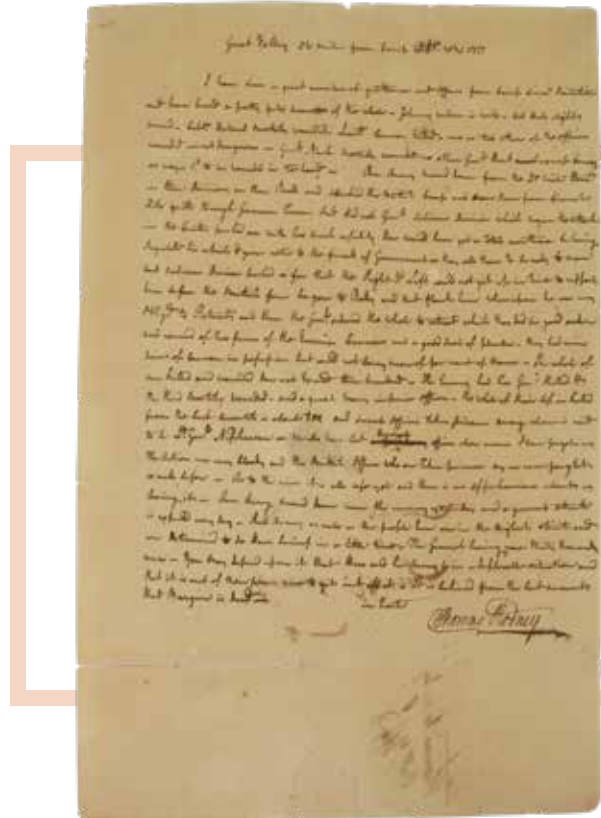


❖ 3017

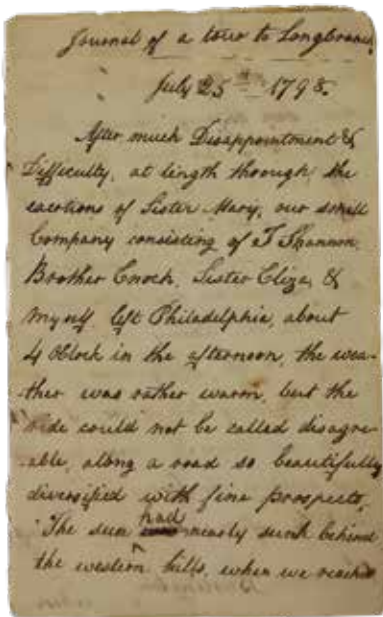
Historic Revolutionary War Letter – Battle of Germantown

Historic Revolutionary War letter dated "Great Valley, 36 miles from Camp, Oct 30th, 1777" to Caesar Rodney (1728-1784) American lawyer, Continental Congressman from Delaware, signer of the Declaration of Independence, and President of Delaware from his brother Thomas Rodney (1744-1811) American lawyer, politician and colonel in the Delaware militia during the American Revolution. 1pp letter regarding battle and particulars including troop movements, casualties, and outcome. Reverse of letter presents ink inscription "From my father to my uncle after Battle of Germantown" Letter measures 12.25" x 8" and has been silked on both obverse and reverse. Bottom of sheet exhibits repaired split with no text involvement. Request detailed transcript.

2000 – 3000



HISTORICAL

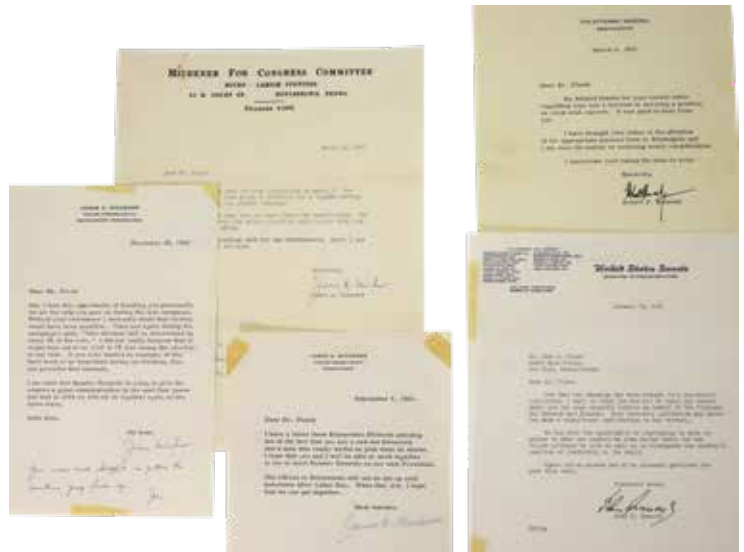


❖ 3018

New Jersey Travel Journal-1798

Travel journal kept by Sarah Wheeler titled "Journal of a tour to Longbranch July 25, 1798". Journal measures 6.75" x 4", 16pp in length, and covers the period of July 25 thru August 5, 1798 and details the trip from Philadelphia to Long Branch, New Jersey and back to Philadelphia. Journal details travel conditions, lodging, and dining as well as meeting Governor Howell. Journal exhibits some slight foxing.

200 – 400



❖ 3020

Political Letter Archive-Kennedy; Michener

Political letter archive written to Dr. John A. Flood (1887-1980), a dentist, political supporter and Mayor of New Hope, Pennsylvania. Archive includes 14 pieces (13 letters) related to national, state and local politics. Of special interest are two letters from Robert F. Kennedy (Attorney General letterhead dated 1963 and US Senate letterhead dated 1965) and three letters from James A. Michener (2-1960 and 1-1962) as well as a postcard from Michener dated 1964. Request detailed listing.

800 – 1200

❖ 3019

Civil War Letter Grouping of Samuel Hancock, 14th and 5th New York Infantry

Grouping of American Civil War letters from Samuel Hancock written to his mother and other relatives during his service in the 14th New York State Militia (14th Brooklyn Regiment), 84th New York Infantry, and the 5th New York Veteran Volunteer Infantry (Duryee's Zouaves). Collection includes 59 letters (5 in ink and 55 in pencil) detailing camp life, battles and personal news. Hancock was wounded on August 18, 1864 near Petersburg, Virginia. Grouping includes 1pp letter from Gettysburg and CDV of Hancock in 14th Brooklyn uniform. Grouping also includes 8 additional documents related to Hancock and his military service. Request detailed listing.

1000 – 2000





❖ 3021

Autographs of Charles A. Lindbergh and Louis Bleriot

Autographs of Charles A. Lindbergh (1902-1974) famed American aviator and first pilot to fly solo nonstop from New York to Paris and Louis Bleriot (1872 -1936) famed French aviator and first across the English Channel. Autographs on menu dated May 25, 1927 with vignette of Bleriot aircraft and text "La Manche, 25 Jullet 1909" on left and vignette of Spirit of St. Louis aircraft of right with text "L'Atlantique 21-22 May 1927" Below Bleriot aircraft is signed "L. Bleriot" and beneath Spirit of St. Louis is signed "C.A. Lindbergh October 30, 1933". Framed menu measures 9.75" x 7.75" (sight) with frame measuring 10.75" x 8.75". Frame also contains French 2Fr.25 stamp autographed "L. Bl riot gL34" and "Philadelphia" with another unsigned French stamp.

400 – 600



❖ 3023

Autographs of 5 Past United States Presidents on One Photograph

Autographed photograph presenting the signatures of Jimmy Carter (1924-) 39th President of the United States, George H.W. Bush (1924-1918) 41st President of the United States, William Clinton (1946-) 42nd President of the United States, George W. Bush (1946-) 43rd President of the United States, and Barack Obama (1961-) 44th President of the United States. Framed photograph was taken in the Oval Office and measures 7.5" x 9.5" (sight) with frame measuring 12.5" x 15.5". Clinton has signed in silver ink with Obama and George W. Bush signing in black in darker areas that makes signatures slightly difficult to see.

400 – 600



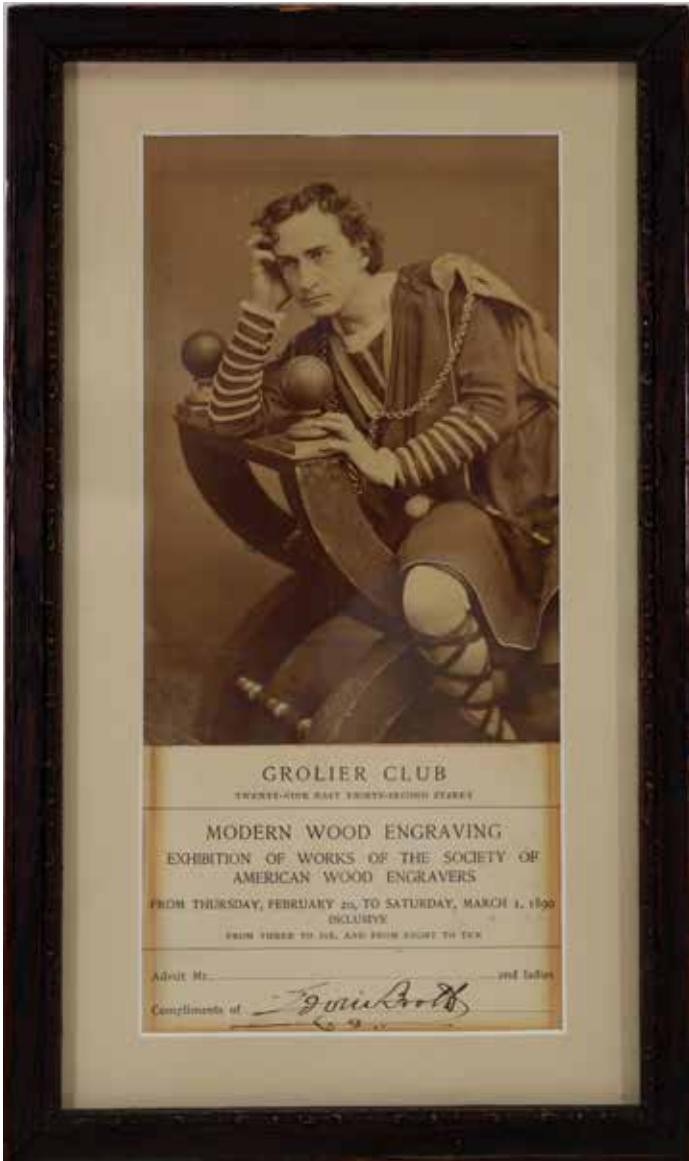
❖ 3022

Autograph of Victor Herbert

Autograph of Victor Herbert (1859-1924) American composer, cellist and conductor. Autographed photograph of Herbert (knees-up standing) by White of New York. Photograph measures 8.5" x 7" on 12" x 9.5" mount (sight). Photograph is signed at top "To My Friend Louis H. Eisenlohr with all good wishes, Victor Herbert Nov. 1919". Surrounding Herbert's portrait at 15 ink manuscript musical bars with accompanying titles of Herbert's works. Photograph is framed with a 19" bone conductor's baton. Shadowbox frame measures 20" x 18.5". The recipient of this photograph Louis H. Eisenlohr (1859-1922) was a noted Philadelphian and vice-president of the Otto Eisenlohr; Bros. Cigar Manufacturers.

400 – 600

HISTORICAL



❖ 3024

Autograph of Edwin Booth

Autograph of Edwin Booth (1833-1893) 19th century American actor and brother of John Wilkes Booth. Autograph on complimentary ticket conveyance card for the Grolier Club exhibit of Modern Wood Engraving held February 20-March 1, 1890 in New York. Framed card measures 2.75" x 3.75" with albumin photograph of a seated Booth (full length) in actor's costume, measuring 5.75" x 3.75" (sight). Frame measures 10.5" x 6.25".

200 – 300



❖ 3025

Autograph of Woodrow Wilson

Autograph of Woodrow Wilson (1856-1924) American politician and 28th President of the United States. Autograph on appointment of Samuel Hargus for Attorney of the United States for the Western District of Missouri dated October 27, 1920 and signed by Wilson as President of the United States. Framed document measures 13.25" x 18" (sight) with frame measuring 23" x 34". Document exhibits some discoloration and toning.

200 – 400

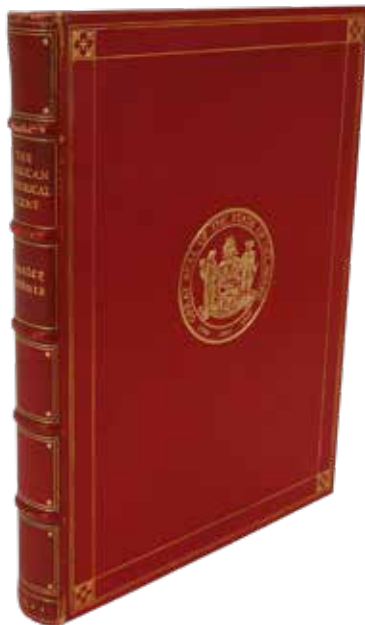


❖ 3026

Autograph of Calvin Coolidge

Autograph of Calvin Coolidge (1872-1933) American politician and 30th President of the United States. Autograph on bust photograph signed "To Mrs. William F. Whiting with Sincere Regards, January 1920, Calvin Coolidge". Framed photograph 9.75" x 8" (sight) measures 13.25" x 18" (sight) with frame measuring 23.5" x 19.5". Photograph exhibits slight vertical crease.

200 – 400



❖ 3027

Stanley Arthurs Book-Historical

Book titled "The American Historical Scene" as depicted by Stanley Arthurs, University of Pennsylvania Press, Philadelphia, 1935. This copy being a "Delaware Edition" numbered 77 of 100 copies with full leather binding by Albert Oldach. Book printed by E.L. Hildreth; Co., Brattleboro, Vermont. Second flyleaf features inscription "Inscribed for my dear friends Irene and Frank Ottwell with every kind wish of the artist, Stanley M. Arthurs". Third flyleaf features watercolor of person winding grandfather clock at bottom of staircase. Watercolor measures 4" x 3" and is signed at lower right "SMA". Binding exhibits some slight rubs and some darkening. Book housed in cardboard slipcase that exhibits some splitting and damage. Stanley Arthurs (1877-1950) American painter (Brandywine River School), illustrator and student of noted American artist Howard Pyle.

400 – 600



❖ 3028

Painting of Vice Admiral Sir Henry Kellett

Oil on canvas painting of Vice Admiral Sir Henry Kellett (1806-1875) noted British naval officer and Arctic explorer. Oil painting attributed to Stephen Pearce (1819-1904) measures 15.25" x 13" and is housed in a decorative gesso frame measuring 22.75" x 20.25". Image shows Kellett waist-up wearing naval uniform with epaulettes. On his chest he wears a 1818-1855 Victorian Arctic service medal, Companion of the Order of Bath, and a First China War medal-1842. Painting is similar to a portrait held by the National Portrait Gallery in London, England. Painting has been relined and exhibits some inpainting at lower left.

2000 – 4000

JEWELRY

3029



3030



3032



3031



3033



❖ 3029

14KW Gold Diamond Solitaire Ring. 3.19CT

Features (1) 9.5 - 9.62 X 5.69mm round brilliant cut Diamond, 3.19ct, Colour: I, Clarity: SI2, Cut: Very Good, Polish and Symmetry: Good, Fluorescence: none. GIA Report Number: 5202132692. Size 6 1/2. 3.1gtw.

12000 – 18000

❖ 3030

14KY Gold Diamond Solitaire Ring. 2.37CT

Features (1) approx. 8.1mm mine cut cushion shape Diamond, Clarity: I1 Colour: LM. 2.37cts. Size 7 3/4. 3.3gtw.

5000 – 8000

❖ 3031

Platinum Diamond Ring. 2.0CTW

10% Irid. Platinum. Features (1) 7.60 X 7.72 X 4.83mm round brilliant cut Diamond, approx. 1.72cts, Clarity: I2. Colour: KL. Cut: fair make flanked by (2) 4 X 2 X 1.5mm channel set baguette Diamonds, approx. 0.30ctw, Clarity: VS. Colour: G. Size 8. 4.7gtw.

2000 – 3000

❖ 3032

18KW Gold Diamond Solitaire Ring

Features (1) 6.1mm round Diamond, .80ct. Clarity: VS Colour: LM. Size 8. 4.8gtw.

2000 – 3000

❖ 3033

14KW Gold Diamond Ring

Ladies wedding set. Three rings soldered together. 11.3mm wide. Center ring features (1) 3.8mm princess cut Diamond, approx. .33ct flanked by (4) 2.5mm princess and (6) approx. 2 X 1.5mm baguette channel set Diamonds. Wrapped by two bands with (12) channel set 2.2mm princess and (14) 2 X 1mm baguette Diamonds. Set: approx. 2.0ctw. Size 7. 8.6gtw.

800 – 1200



❖ 3034

14KW Gold Mabe Pearl Earrings

Each 1 1/8" round white gold clip earring features (1) 18mm round Mabe Pearl set in a yellow gold bezel surrounded by (58) 2.0mm round Diamonds. Pair: approx. 3.5ctw Diamond. 31.3gtw.

1200 – 1800

❖ 3036

18KY and White Gold Diamond Earrings

Each 7/8" long omega back post J-hoop earring features (48) 1.5mm princess cut invisible set Diamonds. Pair: approx. 1.44ctw. 16.0gtw.

600 – 900



❖ 3037

18K Two Tone Gold Diamond Huggie Earrings

Each 5/8" X 3/8" yellow gold omega back post earring features (9) 2-2.8mm round Diamonds set in white gold. Pair: approx. 1.0ctw. 6.1gtw.

400 – 600



❖ 3035

14K Rose Gold and Diamond Hoop Earrings

Each 1 3/8" long full oval, hinged hoop with post and locking mechanism, features (16) 2.5mm round Diamonds along front of hoop and (11) along inner line of hoop facing outward. Pair: approx. 3.24ctw. 12.0gtw.

1000 – 2000

❖ 3038

14KY Gold Diamond Earrings

Each 3/4" x 3/8" omega back post earring features a series of baguettes flanked by round channel set Diamonds. Pair: approx. 2.0ctw. 9.0gtw.

400 – 600



❖ 3039

18KY and White Gold Diamond Necklace

16 1/2" long. Features (176) 1.75mm princess cut invisible set Diamonds, approx. 5.50ctw. 62.6gtw.

1500 – 2500

❖ 3040

14KY and White Gold Diamond Necklace

16" long. Features (7) 3.75mm round bezel set Diamonds in individual links plus (36) 2.0mm round channel set Diamonds. Approx. 2.50ctw. 65.7gtw.

1500 – 2500



JEWELRY

❖ 3041

14KY Gold Diamond Necklace

15" long. Features (111) 1.5 - 3.0mm round graduated Diamonds, approx. 3.5ctw. 28.1gtw.

1200 – 1800



❖ 3044

14KW Gold Ruby Heart and Diamond Ring

Features (1) 14.7 X 12.7mm Ruby Heart set above a halo of (42) .8mm and flanked by (20) .8mm round Diamonds, approx. .15ctw. Size 6 3/4. 5.9gtw.

300 – 500



❖ 3047

14KW Gold Opal, Diamond and Emerald Ring

Features (1) 14 X 10mm oval Opal with a milky white base and strong blue, green and orange fire, haloed by (18) 2.0mm round Diamonds, approx. .50ctw and (18) 2.3mm round Emeralds. Size 8. 7.8gtw.

500 – 800



❖ 3045

14K Yellow and White Gold Emerald and Diamond Ring

Yellow gold shank with white gold bezel and channels. Features (1) 8 X 7mm bezel set emerald cut Emerald haloed by (14) 2mm round channel set Diamonds flanked by (6) 2.5mm round channel set Diamonds. Approx. .78ctw Diamond. Size 7. 12.5gtw.

600 – 900



❖ 3048

14KY Gold EFFY Emerald and Diamond Ring

Features (1) 7 x 5mm oval Emerald surrounded by (8) 2.4mm round Diamonds and flanked by (36) 1.4mm round Diamonds, approx. .90ctw. Size 7. 6.7gtw.

600 – 900

❖ 3042

14KW Gold Diamond Necklace

17"l x 1/2"w x 3/8"d with invisible tongue clasp. Features (547) 1.0mm round Diamonds, approx. 2.75ctw. 25.5gtw.

1200 – 1800

❖ 3043

18KY and Rose Gold Necklace

17" long with invisible pressure tongue clasp. 1/2" wide. 3/8" deep. Reversible style from alternating yellow and rose gold links to uniform yellow gold links. 65.1gtw.

1000 – 2000



❖ 3046

14KY Gold Amethyst, Citrine and Diamond Ring

18.3mm wide. Cross-over snake head design of Amethyst and Citrine with Diamond accents. Each head consists of (1) checkerboard top pear shape gemstone and (8) checkerboard top gemstones of various shapes. (8) small round Diamonds in white bezels accent the heads and (10) wind through the illusion channel that flows between the two heads. Size 7. 10.5gtw.

200 – 400



❖ 3049

18KY Gold Tanzanite and Diamond Ring

Features (1) 7.00 X 6.50mm cushion cut medium blue Tanzanite flanked by (2) round European cut Diamonds, approx. 1.50ctw, Clarity: VS Colour: JK. Size 5. 4.0gtw.

2000 – 3000





❖ 3050

14K White and Yellow Gold Emerald and Diamond Ring

Features (1) 12.14 X 6.24 X 3.57mm marquise Emerald, approx. 1.50ct with GIA report #6207620238. Emerald is set with yellow gold prongs and flanked by (2) 5.5 X 2.0mm baguette Diamonds, approx. .40ctw, Clarity: VS Colour: G, and (2) 4.0mm round brilliant cut Diamonds, approx. .50ctw, Clarity: VS Colour: G. Size 10 1/4 with a hinged shank. 7.2gtw.

3000 – 5000



❖ 3053

Platinum Diamond Ring

PT950. Features (1) 4.7mm round flanked by (2) 4.0mm round Diamonds, approx. .94ctw. 6.3gtw.

500 – 800



❖ 3054

18KW Gold Diamond Ring

Features (1) 5.50mm round European cut center Diamond, approx. 0.55ct, Clarity: SI2 Colour: JK haloed by (8) 3.0mm round brilliant cut Diamonds, approx. 0.80ct, Clarity: VS Colour: G. Size 7 1/4. 3.0gtw.

500 – 1000



❖ 3051

Platinum and Diamond Ring

Features (1) 4.50mm, (2) 3.50mm, (4) 2.70mm (6) 3.00mm, (6) 2.50mm and (4) 2.00mm round old cut Diamonds, approx. 2.00ctw., Clarity VS Colour G. Size 8 with etched shank. 7.1gtw.

800 – 1200



❖ 3055

18KW Gold Diamond Ring

Features (16) 2.0mm invisible set princess cut Diamonds, (26) 2.0mm and (48) 1.8mm round Diamonds. Approx. 3.0 ctw. Size 7. 17.7gtw.

800 – 1200



❖ 3052

14KW Gold Diamond Ring

Features (1) 3.6mm round European cut Diamond with a high crown, (2) 3.2mm round European cut Diamonds plus (16) 1 - 2.3mm round accent Diamonds. Ring: approx. .75+ctw. Size 6 3/4. 5.3gtw.

300 – 500



❖ 3056

14KW Gold Diamond Earrings

Each 7/8" long post J-hoop earring features (10) 1.6mm princess cut invisible set Diamonds and (8) 2.0mm round Diamonds. Pair approx. 1.50ctw. 5.3gtw.

500 – 800



❖ 3057

Platinum and White Gold Ruby and Diamond Bracelet

7 1/4" long with hidden safety clasp. Features (132) synthetic and genuine Rubies, (34) round brilliant cut Diamonds, approx. 5.24ctw, Clarity: VS Colour: LM. 24.0gtw.

2000 – 3000



❖ 3058

14KY and White Gold Diamond Bracelet

8 1/2" long. Features links of channel set tapered baguettes, approx. 4.5 - 5ctw. White gold screw heads accent the terminals of each link. 101.9gtw.

2000 – 3000



❖ 3059

18KY Gold Pearl Bracelet

7 1/4" long X 5/8" wide with interlocking slide bar tube clasp and safety chain. (28) full drilled Fresh Water Pearls wire set in links along length of flexible bracelet. 19.9gtw.

400 – 600

JEWELRY



❖ 3060

14KY Gold Bracelet with 14K and 18K Charms

7" long. 18K: Pagoda, Rooster, Bike Surrey, Abacus. 14K: "You mean the world to me" with enamel, Heart, Water Buffalo, Bell with Dieties. 23.0gtw.

400 – 600



❖ 3063

14KY Gold Black Onyx Bracelet

7" long flat Byzantine link bracelet with black Onyx cabochon terminals on clasp ends. Multiple dents. 17.9gtw.

300 – 500



❖ 3061

18KY Gold Charm Bracelet with 14K and 18K

8" long. (7) charms include (2) 18KY: round frame with kneeling Siam type figure, teapot set with glass stones and dyed green domed cabochon. (5) 14KY: Hula dancer, sitting Buddha, carved Aventurine Buddha in gold frame, Ski boot, double handled Water Jug set with red glass stones. 46.4gtw.

800 – 1200



❖ 3064

14KY Gold Multi-Gemstone Bracelet

7" long. Features (3) 8 x 6mm emerald cut blue Topaz, (2 each) of Garnet, Amethyst, Citrine and Peridot. Round Garnet cabochons accent the terminals of each link. 43.1gtw.

600 – 900



❖ 3062

14KY Gold Turquoise and Seed Pearl Bracelet

Hinged bangle. 3/4" across top. 2 1/4 X 1 7/8" I.D. Pressure tongue clasp with safety catch. Features (15) Turquoise cabochons and (54) seed Pearls, missing one. 17.7gtw.

300 – 500



❖ 3065

14KY Gold Asian Character Symbols Bracelet

7 1/2" long. 3/4" wide. Safety chain. 20.5gtw.

300 – 500



❖ 3066

14KY Gold Yellow Diamond Ring

Features (1) 11.08 X 5.62 X 3.44mm Marquise Brilliant, approx. 1.16ct. Clarity: SI1 Colour: Natural Fancy Intense Yellow, Polish: Very Good, Symmetry: Good, Fluorescence: Medium Blue. Even. GIA Report #2165968971. (12) white baguette Diamonds flank the center marquise. Size 10 1/4 with a hinged shank. 7.7gtw.

6000 – 9000



❖ 3069

14KW Gold Diamond and Pearl Necklace

16" long plus drape. Knotted triple strand of (61, 62, 67) 5.5 - 6mm round Pearls featuring a safety clasp with (6) round brilliant cut Diamonds accented by (12) single cut round Diamonds, approx. .50ctw and (1) 6.2mm round Pearl. 59.2gtw.

600 – 900



❖ 3067

14KY Gold Multi-Gemstone Necklace

15" long. Features (3 each) of 9 X 7mm oval Citrine and blue Topaz, (4) of Amethyst, (1 each) of Peridot and Garnet. 55.0gtw.

1000 – 2000



❖ 3070

14KY Gold Necklace with Charms

26" long. (36) Charms include: (2) 18K: Wirework Dangle, enameled Mushroom. (20) 14K: St. Christopher medal, Marriage License, 69 US NY, Fraternity with seed Pearl and 1.85mm round Diamond, approx. .025ct, Heart, back Plate of monogrammed Disc, Fan, Pietra Dura, Wedding Bells with Ruby, Sapphire, Pearl, blue enameled monogrammed Locket, Boat, Clover, Airplane, monogrammed Tag, Tree, Key to Success, Heart, Baby Carrier, Telephone, triple Hearts. (3) 10K: monogrammed Cover, Locket with 3mm round Diamond, approx. .11ct., framed Intaglio. (3) 9ct rose gold Victorian type Pentacle Pentagram, purple Intaglio Stamp, Teapot. (1) Silver Celebra Pendant Watch. (7) Miscellaneous: Jade Coy, etched Locket, rose gold filled Victorian with Pearl, faience Scarab, enameled Ball, Fairy Cross, Jade Elephant. Total: 170.0gtw.

2000 – 3000



❖ 3068

18KY Gold Pearl Necklace

16" long. 12mm wide plus decor featuring (19) approx. 6 X 4.5mm Pearl drops alternating with leaf dangles. 31.2gtw.

600 – 900

JEWELRY



❖ 3071
Platinum and 18KY Gold Bead Link Necklace
 15" long. 1/2" wide. Triple chain design, each link consists of a triple column of stationary beads: (1) Platinum flanked by (2) 18KY gold beads. One chain needs to be repaired near box of pressure tongue clasp. 36.1gtw.
800 – 1000



❖ 3073
18KY Gold Elephant Head Ruby Eyes Cufflinks
 1 X 3/4" 18KY gold Elephant heads with 14KY gold cufflink components. Elephants feature round faceted Ruby eyes, polished gold tusks and ears. 22.3gtw.
400 – 600



❖ 3076
14KY Gold Tiffany Brooch Pin Pendant
 2" interlocking triple ring design with open hook and also pin finding. 22.9gtw.
400 – 600



❖ 3077
18KY Gold Sapphire and Diamond Ring
 Features (1) 10 X 7.5mm fancy cut medium purplish blue Sapphire, eye clean (Abr) (Fac) with tiny wear chips, flanked by (2) round European cut Diamonds, approx. .70ctw, Clarity VS Colour GH. Size 9 1/2. 8.7gtw.
600 – 900

❖ 3072
14K Gold Jade Bead and Coral Bead Necklaces
 (1) 36" long knotted, spinach green Jade 9 - 9.5mm round bead necklace with 14KW clasp. (1) 21" long Angel Skin Coral graduated 8.6 - 11mm round bead necklace with 14KY clasp. 172.5gtw.
300 – 500



❖ 3074
18KY Gold Sapphire and Diamond Dog Pin Brooch
 1 1/4 X 1" Poodle with round Diamond eyes and a blue Sapphire studded collar. 11.4gtw.
200 – 400



❖ 3075
18KY Gold Turquoise and Ruby Teddy Bear Pin
 1 1/4 X 5/8" dimensional bear with faceted round Ruby eyes, holding a flower with (6) round Turquoise cabochons and (1) round faceted Ruby. Pin finding is not gold. 14.0gtw.
300 – 500

TIMEPIECES



❖ 3078

18K Golay Fils Stahl Repeater Pocket Watch

53mm. A. Golay Leresche; Fils. Geneve. 2 Rue de la Paix, Paris. Minute repeater. Marked 750. Open face. #18415. White dial with Roman numerals. Single sunk. Bow and crown are not gold. Monogrammed lid. 117.8gtw.

4000 – 6000

3079



❖ 3079

18KY Gold Hour Repeater Pocket Watch

53mm. Hunter style. White dial with Roman numerals. Single sunk. Serial #1891. Stem is at 3:00. Bow is not gold. 144.4gtw.

1000 – 2000

❖ 3081

Illinois Bunn Special Pocket Watch

51mm. Open face. Gold filled. Double sunk. Motor Barrel 25 Jewels 60 Hour. Adjusted Temp. and 6 positions. Serial #5218166.

500 – 800

❖ 3080

Sterling Silver Diamond Fusee Pocket Watch

53.6mm. Key wind. Open face with bull's eye crystal. Fancy silver dial with sunken seconds register and rose gold Roman numerals. English maker Edw. Hawkesworth, York. Serial No. 5438. Gilt dust cuvette. Crisp engraving. Blued condition of screws. (1) faceted Diamond end-stone to the centre of the three arm steel balance wheel. Hallmarked case with maker mark, GMB, f, Lion passant facing left. 170.9gtw.

800 – 1200

❖ 3082

14KY Gold Pocket Watch

51mm. Open Face. Key wind/set. Key present. Second hand is loose but present. 102.9gtw.

500 – 800

❖ 3083

Studebaker Pocket Watch

52mm. South Bend Watch Co. Open face. Gold Filled. Single sunk. 21 Jewels. Double roller. Serial #1189008.

300 – 500

3080



3082



3081



3083



TIMEPIECES

3084



3086



3088



3085



3087



❖ 3084

14KY Howard Pocket Watch. Most Sacred Heart

48.5mm. Open face with emblem of the Most Sacred Heart of Jesus. Single sunk. 17 Jewels. Serial #959345. 90.0gtw.

300 – 500

❖ 3085

14KY Gold Elgin Pocket Watch

43.7mm. Open face. G.M. Wheeler Model. 17 Jewels. Serial #23884738. Monogrammed rear lid. Personalized on dust cover "Horace From Mother; Father June 1st. 1922". 50.2gtw.

300 – 500

❖ 3086

Hamilton Pocket Watch

49.5mm. Open face. Gold filled. Single sunk. 17 Jewels. Serial #1140786. Double Roller. Rear lid is engraved with Masonic symbol, 3 interlinked rings, monogram. 87.2gtw.

200 – 400

❖ 3087

9Ct Gold Pocket Watch

49.3mm. Half hunter case. Black enamel Roman numerals. Face shows some damage. 15 Jewels. 86.6gtw.

300 – 500

❖ 3088

Acier Moon Phase Calendar Pocket Watch

51.6mm. Open face. White enamel dial with gilt decor. Roman and Arabic numerals. Gun metal. Clear dust cover. 97.6gtw.

300 – 500

❖ 3089

Moon Phase Calendar Pocket Watch

52mm. Open face. White enamel dial with gilt decor. Arabic numerals. Lever. Serial #56493. Switzerland. Gun metal. 116.0gtw.

300 – 500

❖ 3090

Moon Phase Calendar A. Robert Pocket Watch

53.3mm. Open face. Dial with gilt decor. Arabic numerals. 3 Jewels. Gun metal. Clear dust cover. 84.6gtw.

300 – 500



3089



3092



3091



3090



3093

❖ 3091

Silver Moon Phase Calendar Pocket Watch

51.8mm. Hunter Case. .800 Silver. Hallmarked. Triple calendar. White enamel dial with gilt decor. Roman and Arabic numerals. Dust cover engraved "Ancre Calender Uhr Systeme Perfectionne". 94.4gtw.

200 – 400

❖ 3092

Coin Silver American Waltham Pocket Watch

55.5mm. Fahys Monarch coin silver hunter case. Dust cover is not silver. White dial with Roman numerals and outer red Arabic numerals. Double sunk. Serial #5788545. 155.9gtw.

200 – 400

❖ 3093

14KY Gold Hamilton Pocket Watch

46.5mm. Open face. White dial with Roman numerals and sub-seconds dial. 23 Jewels. Serial #1863028 920. 64.6gtw.

300 – 500

❖ 3094

14KY Gold E. Howard Pocket Watch

45.7mm. Open face. Single sunk. 17 Jewels. Serial #1179522. Photo of woman inside cover. Comes with original box and watch license paper. 65.3gtw.

500 – 800



TIMEPIECES



❖ 3095

18KY Gold Patek Philippe Pocket Watch

45.5mm. Patek, Philippe; Co. Bailey, Banks; Biddle. Open Face. Rear lid is monogrammed. White dial with Arabic numerals. Single sunk with red numerals. 20 Jewels. Serial #183042. (8) adjustments Special. 68.5gtw.

2000 – 4000

❖ 3096

18KY Gold Patek Philippe Co. Wrist Watch

18k yellow gold calatrava with reptilian band, 30.5mm. Serial #828844.

6000 – 9000





❖ 3097

18KY Gold Breguet Moon Phase Wrist Watch

43mm lug end to lug end. Serial #2585. Buckle is 18KY. Original box with miniature tool.

10000 – 15000



❖ 3099

18KY Gold Rolex Wrist Watch

Model 67198. Oyster bracelet, champagne dial 11 indices. Serial #T327723. 60.3gtw. Comes with box and paperwork.

3000 – 5000

❖ 3102

Platinum and 14KW Gold Diamond Hamilton Watch

Ladies' 6 1/4" long wrist watch with locking clasp and safety chain. 17 Jewels. Case stamped Platinum. Bracelet marked 14K. Features (44) 1.00 - 2.50mm round Diamonds, approx. .80ctw, Clarity VS. 16.4gtw without movement. 19.7gtw.

500 – 800



❖ 3100

18KY and 9ct Gold Rolex Cellini Wrist Watch

8" long bracelet is 9ct. Case #2194845 is 18KY. 19 Jewels. Stem is rusty. 82.3gtw.

3000 – 5000



❖ 3103

14KY Gold Mathey-Tissot Triple Calendar Watch

43.6mm lug end to lug end. Wrist watch features day, month, moon phase registers. Manual wind. Back cover monogrammed "W.D.G." Flex-Let band needs repair/replacement.

1000 – 2000

❖ 3098

18KY Gold IWC Schaffhausen Wrist Watch

49.7mm lug end to lug end. International Watch Co. Da Vinci. Perpetual Calendar Chronograph. No. 2391679. Buckle is 18KY.

5000 – 8000



❖ 3101

Longines Col. Charles A. Lindbergh Wrist Watch

33.3mm. Hour Angle Watch.

1000 – 2000



TIMEPIECES



❖ 3104
**18KY Schaffhausen
 Automatic Wrist Watch**
 33.3mm. Speidel band.
600 – 900

❖ 3105
9CT Gold Rolex Wrist watch
 21mm. 15 Jewels. Single sunk
 with second hand register.
300 – 500



❖ 3106
**18KY Gold Longines
 Wrist Watch**
 42.5mm lug end to lug
 end. Manual wind.
400 – 600



❖ 3107
**10K Gold Victorian Mesh
 Pearl Enamel Bracelet**
 Rosy yellow gold with black
 enamel detailing, green gold
 leaves, (9) tassels and (2) Seed
 Pearl accents. 7" long X 5/8"
 wide with pressure tongue
 clasp and safety chain. Back
 of decorative 29.9 X 27.6mm
 clasp is engraved "Feb. 15th
 1874". 44.1gtw.
600 – 900

❖ 3108
**Ladies' 14KY Gold Diamond
 Cyma Wrist Watch**
 7" long. 18mm round case with
 (56) 1.25mm round single cut
 Diamonds set around bezel
 and in bracelet, approx. .50ctw.
 Quartz. V8 Swiss 6 Jewels.
 976001. 23.8gtw.
400 – 600



SILVER

❖ 3109

Tiffany Sterling Silver Flatware Service for 12

This monogrammed set is in the "Faneuil" pattern and includes: (12) 9.25" hollow handled luncheon knives, (12) 6" butter spreaders, (12) 7" luncheon forks, (12) 6.75" salad forks, (8) 6.75" cream soup spoons, (8) 6.25" dessert forks, (18) 6" teaspoons, (1) 7" ladle, (1) 7" cream ladle, (2) varying serving forks (8.5" and 9"), (2) 8.75" serving spoons, (1) 6" olive fork, (1) hollow handled master butter spreader. Includes labeled Tiffany cloth rolls. 114ozt not including the hollow handled pieces.

1000 – 2000



❖ 3110

Tiffany Sterling Silver Tea/Coffee Set

Monogrammed set in the "Queen Anne" pattern includes (1) coffee pot 10"h, (1) teapot 8"h, (1) lidded sugar bowl 4"h, (1) creamer 5"h, and (1) waste bowl with saucer 3"h. 73.18 total ozt. including coffee and teapot handles.

1000 – 2000



❖ 3111

Gorham Sterling Flatware Service for 12 with Extras

In the "Buttercup" pattern, service includes: (12) 7.5" dinner forks, (8) 7" luncheon forks, (12) 5.5" oyster forks, (8) 5" ice cream forks, (8) 6.5" salad forks, (4) 7" salad forks (modern), (8) 6" pastry forks, (8) 6.75" gumbo spoons, (4) 6.25" gumbo spoons (modern), (12) 6" teaspoons, (12) 7" soup spoons (6 modern), (4) 8.5" serving spoons, (8) 4" demitasse spoons, (4) 5.5" fruit/orange spoons, (8) 6" flat handle butter spreaders, (1) 4.5" salt ladle, (1) 5.75" two tine butter pick, (1) 6" sugar spoon, (1) 4.5" pierced bon bon spoon, (1) 4.25" sugar tong, (1) 7.5" master butter, (1) 7" ladle, (1) 9.25" cake server, and (1) 9" solid berry/casserole server. Hollow handled pieces include (12) 9.5" dinner knives with French blades, (8) luncheon knives with blunt blades, (2) piece carving set with 9" blade, joint fork and pie server.

1500 – 2500

SILVER

❖ 3112

Tiffany & Co., Sterling Silver English King Flatware

The monogrammed partial service includes (10) 7.5" forks, (7) 7" forks, (12) 6" teaspoons, 7" cream ladle, (6) 8" flat handled fish knives, (4) 6" cocktail forks, and (6) 9.25" hollow handled dinner knives. 74 ozt not including hollow handled pieces.

1000 – 2000



❖ 3113

Whiting Sterling Silver Candelabrum

Pair of Frank M. Whiting sterling silver 3 light candelabra. Convertible to single light. Weighted. 17.5"h x 14"w

400 – 600

❖ 3114

Sterling Silver Serving Bowl

Smithed and retailed by Bailey, Banks and Biddle bowl has heavily decorated pierced border with hand chased floral decoration to the center. 18.0 ozt, 2"h x 10" round

400 – 600



❖ 3115

19th c. English Berry Spoons

Pair of Mary Chawner, London, vermeil and chase decorated berry spoons in original velvet case. Dated 1837, 8.75"l, case 5"h x 10"w 4.21ozt

400 – 600

DECORATIVE



❖ 3116

Tiffany Studios "Acorn" Lamp

Early 20th century, Tiffany Studios bronze and leaded glass table lamp, the domed shade with a band of acorns against a geometric ground. Both shade and based are signed Tiffany Studios. 3 panes have hairlines. 22"h x 16"w

5000 – 8000



DECORATIVE

❖ 3117

Antique Baccarat Gridel Paperweight

Central Gridel moth cane and silhouettes including horse, goat, elephant, rooster, deer with other complex canes on a cushion of white upset muslin and colored filigree. Signature/date cane reads, "B 1848" 3.125" dia.

800 – 1200



❖ 3118

Antique Baccarat Gridel Paperweight

Close packed millefiori in reds, greens and blues and Gridel silhouettes. Gridel silhouettes including a goat, rooster, and monkey, are scattered throughout traditional Baccarat canes. Shallow fleabite to top. Signature/Date cane reads "B 1847". 2.25" dia.

500 – 800



❖ 3119

Antique Clichy Paperweight

A central pink and green rose is ringed by concentric circles of green-centered, white star and dark red canes. A spaced ring of trios of moss green pastry mold canes interrupted by large pink floret canes. 2.625" dia.

500 – 800



❖ 3120

Antique Clichy Paperweight

Close packed mille fiori with a wide variety of canes, both complex and common, held in a red blue and green base. Minor fleabite to the surface, interior imperfections. 3"

400 – 600



❖ 3121

Antique Baccarat Macedoine Paperweight

With sections of twists, filligree and laticinio in cobalt blue, red, pink, coral and yellow. 2.75" round

300 – 500

❖ 3122

Clichy Sulfide paperweight Grouping

Includes 1851 Crystal Palace sulphide paperweight from The Great Exhibition of the Industry of All Nations and a profile portrait of. Minor surface abrasions. 2.25" and 2.4"

400 – 600



❖ 3123

Baccarat Engraved Paperweight

Engraved depiction of the Osbourne House, Isle of Wight with maroon flash. 3"

200 – 300



❖ 3124

Baccarat Sulfide Paperweight

Benjamin Franklin in a fancy cut faceted weight with red flash. Sulfide is signed G.P. 1954, weight acid etched 1957. Also etched 47 - 54 - 73. 3.1"

200 – 300

❖ 3125

Victorian Epergne

Light blue "Hanging Basket" epergne, with four ruffled trumpet shaped vases, alternating with barley twist branches holding (3) moulded glass baskets, all supported on a crimped circular dish. 22"h x 10" round

300 – 500





❖ 3126
Victorian Epergne
 Victorian cranberry glass
 "Trumpet" epergne with
 central trumpet vase with
 (4) smaller bud vases, all with
 clear stems over a dish base.
 23"h x 11.5"round
300 – 500

❖ 3127
Victorian Epergne
 Single "Thorn" vase with
 cranberry clear glass petals
 over clear stem and crimped
 bowl base. 21.25"h x
 11"round
300 – 500



❖ 3128
Timo Sarpaneva Claritas Vase
 Sarpaneva art glass vase for
 iittala in black and white with
 controlled bubble. 10.75"h x
 6.5"round
600 – 900

❖ 3129
Timo Sarpaneva Claritas Vases
 Pair of Sarpaneva art glass
 vases for iittala in black and
 white with controlled bubble.
 7.75"h x 4.5"round
600 – 900



❖ 3130
Baccarat Crystal Stemware
 (42) pieces in the "Massena"
 pattern. Includes (12) 8.5"
 champagne flutes, (19) 6.5"
 red wine glasses, and (11) 7"
 water goblets.
500 – 800

DECORATIVE



❖ 3131

Baccarat Millesimo Paperweight Grouping

Includes a pair of concentric millesimo paperweights, the first being a 1964 bicentennial edition with signature and date central cane surrounded with spaced concentric rings in pastel blue, red and yellow. The other also with spaced concentric rings but in red, green, white and blue. Both with acid etched signatures to base. 2.5" and 2.6" round

400 – 600



❖ 3134

Harold J. Hacker Paperweight

Terrarium style faceted paperweight with brightly colored salamander on dark ground. Etched signature. 2.5"

200 – 300



❖ 3135

Paul Ysart Paperweight

Concentric millesimo with gold fleck latticino spikes on pink ground. 2.88"

300 – 500



❖ 3132

Paul Stankard Paperweight

Brassia or Spider orchid with its long, flowing leg like petals. Signature cane present. 3"

400 – 600



❖ 3133

Paul Stankard Paperweight

Five wild Carolina roses with blushing pink petals and yellow stamens on leafy green stems. Signature cane present and numbered 45277. 2.86"

400 – 600



❖ 3136

Bohemian Glass Portrait Vases

Pair of Moser style gilt cranberry glass with white overlay portrait vases/urns with handles, 8.25" h x 6" round

400 – 600



❖ 3137

Ornate Silver Plated Girandole Inkwell

Four inkwell holders and two lion's head drawers with pierced figural and foliate scroll supported by four sphinxes. 8" h x 18" w x 9" d

200 – 400



❖ 3138

Victorian Bronze Inkwell

Double inkwell with central hunting dog, floral caps and a facial likeness. 12" h x 12" w

300 – 500

❖ 3139

Austrian 800 Silver Oil Menorah

Late 19th/Early 20th c., embossed with crown finial and lions flanking non-engraved ten commandments, with complementing oil ewer. Austrian silver hallmarks on both pieces. 11" h x 8" w x 2.5" d 17.5ozt

300 – 500





❖ 3141
German Hunters Ice Bucket
 Silver plated ice bucket by WMF (Württembergische Metallwarenfabrik, or Württemberg Metal Factory), with wood grouse finial, bands of hunting hounds and moose antler handles. base hallmarked. 18"h x 18"w x 8"d
400 – 600

❖ 3140
Christofle Hot Water Kettle and Stand
 Silver plated kettle with wood handle foliate arms with rounded hinge, berry finial to lid, base with harp-form frame decorated with foliate motifs, on rounded base with central well for burner, raised on foliate scrolled feet. 17"h x 11.5"w
300 – 500



❖ 3145
Figural Jade Statues
 Pair of carved spinach jade sculptures one holding a fan the other a biwa. Tallest is 8.5"h including base.
300 – 500



❖ 3146
Carved Jade Netsuke
 Mottled brown to white jade monkey and peaches. 1.5"h
400 – 600



❖ 3147
Meiji Miniature Bronze Okimono
 Diminutive sculpture of an Oni with an applied gold fly. 2"h x 3"w x 2"d
400 – 600



❖ 3142
Hirado Bisque Cat
 A Meiji Period unglazed bisque porcelain sculpture of a sitting cat with its eyes closed. 8"h x 6"w x 6.5"d
800 – 1200

❖ 3143
Silver Shibayama Vase
 Meiji period, silver and bone vase decorated with birds perched and in flight over flowering branches, accented in mother of pearl, the silver with enameled floral and scrolled foliate design. Signed gold plaque on base. One piece of inlay missing and minor loss to enamel. 6.5"h
400 – 600



❖ 3144
Chinese Sgraffito Yellow Glazed Vase
 19th c., incised light yellow glazed vase with floral enamels. Clear glaze to base and inside. Signed. 6.5"h
400 – 600



❖ 3148
Blanc de Chine Vase
 Decorated in fine black with a scholar and students scene and verse with applied dragon handles. Loss to glaze on the head of one handle. Kangxi mark. 15.5"h x 8"w
400 – 600



❖ 3149
19th c. Satsuma Vase
 Finely decorated bowl with depictions of scholars and deities with dragons and cranes set amongst chrysanthemums, signed Ryokuzan in Koka garden (Crimson flower). Includes base. 4.75"h x 5.25"round
500 – 800

DECORATIVE

❖ 3150

Japanese Imari Centerpiece

Late 19th/Early 20th c., large (3) piece centerpiece or planter in the form of a ship with dragon masthead. 10" h x 15" w

400 – 600

❖ 3151

Japanese Porcelain Figure

Imari figure of a seated samurai. Unsigned. 13" tall

300 – 500

❖ 3152

Japanese Porcelain Censer

Four legged censer with genre decorated panels and foo lion with ball finial. Not signed. 5.5" h x 3.75" w x 3.75" d

300 – 500

❖ 3153

Japanese Porcelain Vase

19th c. Kutani egg shaped vase raised on four feet with floral and songbird decoration. Signed. 5" h x 5" w

300 – 500

❖ 3154

Blue Spatterware Tea Set

Child's blue spatter tea set in the peafowl pattern, including teapot, creamer and sugar, (4) teacups and (6) saucers. 19th century, England. Largest teapot measures 3.75" h. Saucer measures 1" h x 4.5" w. Cup measures 1.75" h x 3.5" w.

400 – 600

❖ 3155

Blue Spatterware Tea Set

Child's blue spatter tea set in the castle pattern, including teapot, creamer and sugar, (5) cups and (6) saucers. 19th century, England. Largest teapot measures 4.5" h. Cup measures 1.75" h x 3" w. Saucer measures 1" h x 4.5" w.

400 – 600



3150



3151



3152



3153



3154



3155



3156

3157



❖ 3156

Green Spatterware Tea Set

Child's green spatterware tea set in the peafowl pattern, including teapot, creamer and sugar and (4) cups and saucers. 19th century, England. Largest teapot measures 4.5"h. Saucer measures 1.25"h x 4.5"w. Cup measures 1.5"h x 3.25"w.

400 – 600

3158



❖ 3157

Spatterware Grouping

Grouping includes spatterware bullseye cups and saucers in blue and purple, red and green, and dark red and blue (which includes an additional waste bowl). 19th century, England. Saucer measures 4.5"w and cup is 1.5"h x 3"w.

400 – 600

3159



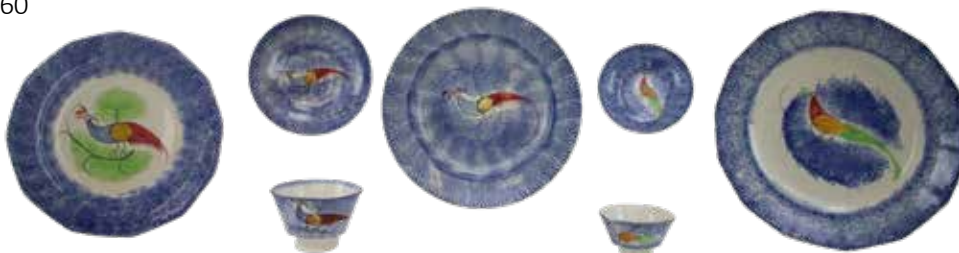
❖ 3158

Spatterware Grouping

Grouping includes (3) green spatterware peafowl cups and saucers and a plate measuring 8" round, and (1) teal spatterware peafowl cup and saucer. 19th century, England

400 – 600

3160



❖ 3159

Red Spatterware Grouping

Red spatterware peafowl pattern, including cup and saucer, (2) bowls and saucers and (3) plates, measuring 8.5" round. 19th century, England

400 – 600

❖ 3160

Blue Spatterware Grouping

Blue spatterware in the peafowl pattern, including (3) plates (with the largest measuring 10" round), cup and saucer, and bowl and saucer. 19th century, England

400 – 600

3161



❖ 3161

Spatterware Cups and Saucers

Grouping of (3) blue spatterware floral cups and saucer (2 tulip, 1 rose). Largest plate measures 4.5"w. Largest cup measures 2"h x 3"w.

400 – 600

DECORATIVE

3162



3165



3166



3167



3163



3164



❖ 3162

Limoges Fish Service

Large oval French Limoges hand painted and signed fish platter with gilded scalloped edge and (11) hand painted and signed French limoges gilded fish plates. Serving dish measures 24" w x 11" d and plates measure 9.5" round.

300 – 500

❖ 3163

Gaudy Dutch Teapot

Soft paste porcelain teapot in the "War Bonnet" pattern. Teacup measures 7" h x 11" w x 6.5" d.

400 – 600

❖ 3164

Gaudy Dutch Plate Grouping

Includes (2) plates, a cup and under plate all in the "War Bonnet" pattern.

300 – 500

❖ 3165

Gaudy Dutch Cup and Under Plate

In the "Single Rose" pattern, saucer measuring 5.5" round and cup measuring 2" h x 3.5" w.

300 – 500

❖ 3166

18th c. Delft Plate

Central design of a vase with a pair of song birds with large surrounding border. De Klaauw mark to the base. 13.75" round

300 – 500

❖ 3167

18th c. Delft Plate Grouping

Trio includes a "Peacock" pattern plate by De Klaauw, and a pair of yellow trimmed floral plates. 10.5" round

400 – 600



❖ 3168

Polychrome Plate Grouping

Pair of hand decorated polychrome plates and a single blue and white Chinese export plate. All 19th c. or earlier. Largest plate measures 9"w.

400 – 600



❖ 3171

Trick Pony Mechanical Bank

Shepard Hardware Co., New York, cast iron, patented 1885, Place a coin in the pony's mouth, pull lever, and the coin drops into the trough. 7"h x 8"w x 2.75"d

500 – 800



❖ 3173

Transvaal Money Box Still Bank

John Harper Ltd. England - Circa 1890, figural bank of a politician swollen to gargantuan proportion by his insatiable appetite for power and political advancement. It is thought to be Paul Krueger, whose poorly reasoned policies set into motion the Boer War. 6.25"h x 4.25"w x 4"d

500 – 800

❖ 3175

Japanese Porcelain Vase

Late 19th c, Ovoid vase with dimples, decorated with a dragon cruising through the clouds. Gold fleck clear glaze and signed with Fukugawa orchid. 10"h x 8"round

400 – 600



❖ 3169

Jonah and the Whale Mechanical Bank

Made by Shepard Hardware Company Buffalo, New York – Circa 1890, Place a coin on Jonah's head and press the lever; the man tosses Jonah forward as if to throw him overboard and the whale opens his mouth. The coin falls into the whale's mouth as Jonah stays in the boat. Release the lever and the whale's mouth is set into an up and down motion. 5.25"h x 10"w x 3.5"d

600 – 900



❖ 3172

Owl Mechanical Bank

J; E Stevens Co., designed by James H. Bowen, patented 9/28/1880. Place a coin on top of the branch, press the lever and the coin drops into the bank and the head returns to its original position as the lever is released. 7.5"h x 4"w x 3.25"d

300 – 500

❖ 3170

Mechanical Organ Bank

J; E Stevens Co., designed by James H. Bowen, patented 4/21/1891. The monkey lifts his hat and the cat and dog rotate when actuated. 7.5"h x 5.5"w x 4"d

400 – 600



❖ 3174

Humpty Dumpty Mechanical Bank

Manufactured by Shepard Hardware Company Buffalo, New York – Circa 1888, lever at back causes hand to mouth coin deposit as eyes roll back. 7.5"h x 6"w x 5.5"d

500 – 800



❖ 3176

Japanese Porcelain Covered Jar

Hand decorated with colorful floral sprays on darker ground, lid with bulb finial. Fukagawa Koransha marks to base. 9"h x 5"w

400 – 600

❖ 3177

Japanese Porcelain Tray

Rectangular tray decorated with a fantastic scene of a Samurai in combat, with war banners in the distance. Not signed. 10.5"w

300 – 500



DECORATIVE



❖ 3178

Japanese Porcelain Tray

19th c. Kutani tray in the shape of Mt. Fuji. Decorated with panels depicting flora and fauna, children at play and woman making tea. 11" w

300 – 500



❖ 3179

Japanese Porcelain Covered Jar

Late 19th/ Early 20th c, Fukugawa jar decorated with blue, white and gold cranes in flight over a turbulent sea. Signed. 5.5" h x 5.5" w

300 – 500



❖ 3180

Japanese Pottery Bowl

Pinched bowl with three curious mice, yellow glaze with green drips throughout. Sumida gawa, unsigned. 2.25" h x 5.5" w

400 – 600

❖ 3181

Japanese Porcelain Figure

Late 19th/Early 20th c, Bijin in a lavender robe, 17" h x 5" w x 5" d

300 – 500



❖ 3182

Japanese Porcelain Figure

Late 19th c, Arita, Bijin holding a fan with gilt decorated accents with finely decorated chrysanthemum sprays. 18" h x 6" w x 4" d

400 – 600



❖ 3183

Japanese Porcelain Vase

19th c. blue and white decorated bulb vase. Signed. 7" h x 4.5" round

400 – 600



❖ 3184

Japanese Porcelain Censer

Late 19th/early 20th c., Imari censer on tall legs, with hand painted floral decoration and dragon finial lid. 8" h x 7" w x 6" d

300 – 500

❖ 3185

Japanese Porcelain Covered Jar

Late 19th/Early 20th c. Imari gourd shaped covered jar. Hand painted genre decoration with thick glaze to the top and twig handle. 7" h x 6" w x 3" d

300 – 500



❖ 3186

Japanese Porcelain Vase

Late 19th/Early 20th c. Triple gourd vase with hand decorated chrysanthemums with cobalt banding on white ground. Signed. 15" h x 7" w

300 – 500



❖ 3187

C. Ahrenfeldt Limoges Demitasse Cups and Saucers

Complementing pair of painted and gilt decorated demitasse or hot chocolate cups and saucers. Decorated with turquoise enamel jewelry and finely painted portraits. Bases are marked with the Ahrenfeldt hallmark and they are also signed Germany. 2.25" h x 3" w cup, 4.5" dia. saucer

500 – 800



❖ 3189

French Sevres Porcelain Urn

Gilt pink porcelain and bronze lidded urn with central cartouche of nymph surrounded by putti with reverse of floral branches. Ormolu mounted acanthus leaf handles. Sevres marking with "France". 25" h x 11" w

400 – 600



❖ 3191

French Bisque Porcelain Bust

Painted bisque porcelain bust of a woman with gilt crown hairpiece and lace like trim and butterfly and rose at bodice. 20" h x 9" w

400 – 600



❖ 3192

Meissen Porcelain Vases

First half of 20th century, marked and numbered on bottom. Grouping of hand painted porcelain vases. Three with floral motifs and gold accents and smallest with Asian motif. Largest measuring 8.75" h x 6.5" diameter and smallest 4" h x 2" diameter

600 – 900



❖ 3188

19th c. French Porcelain Etui

Hand painted floral panels and enamel festoons of ivy. Base is marked illegibly. Contents include needle case, scissors, file, stiletto, and button hook. 4.25" h

300 – 500

❖ 3190

French Porcelain Urn

Sevres style gilt pink porcelain and bronze lidded urn with central hand painted cartouche of couple running, guided by cherubs, with the reverse of a river landscape scene. Ormolu mounted bronze rams head handles. Turquoise blue shields with gilt scrollwork detail. 23" h x 11" w

300 – 500



❖ 3193

Meissen Porcelain Bird Figurines

Early 20th century, marked and numbered on bottom. Hand painted Oriole perched on stump with floral embellishments. 5.5" h

300 – 500



❖ 3194

Meissen Porcelain Bird Figurines

Late 19th/Early 20th century, marked and numbered on bottom. Hand painted Tomtit bird, perched on stump. 3.25" h

400 – 600

DECORATIVE

3195



3197



3198



3196



❖ 3195
Meissen Porcelain Tea Cups, Saucers and Plates

Grouping includes four (4) with matching cup, saucer and plate and eight (8) with matching cup and saucer. Decorated with hand painted floral motifs, scalloped edges and gold accents. Marked and numbered on bottom. Small chip on one saucer. Teacups 2" h, saucer 4.25" diameter, plate 5.25" diameter

400 – 600

❖ 3196
Limoges Pate-sur-Pate Porcelain Vase

Signed by artist "Tom" and factory mark on bottom "MT Limoges" and "Made in Limoges France". White clay body with blue glaze and gold decorative accents on rim and foot. Body decorated with dimensional floral motif.

8.25" h x 3" base diameter.
400 – 600

❖ 3197
Limoges Pate-sur-Pate Porcelain Ferner

Factory mark on bottom "Limoges France". White clay body with gray glaze and gold accents. Body decorated with dimensional cherubs, ornate gold feet and handles.

4.25" h x 12.35" l x 5.25" d
400 – 600

❖ 3198
Limoges Punch Bowl and Tumblers

French Limoges hand painted punch bowl with grape and vine decoration and (6) complementing tumblers. Punch bowl is 6.5" h x 15" round and tumblers 4.25" h x 3" round

400 – 600

❖ 3199
French Limoges Pitcher and Cups

Hand decorated pitcher and tumblers with dragon handles, pitcher signed J.P.L. France, 15" h x 8.75" w and 5.75" h x 5.25" w

400 – 600

3199



3201



3200



3202



3203



3204

❖ 3200

Lladro Porcelain Figure

"Musa Lirica" signed and numbered Antonio Ruiz, standing woman with harp, measuring 35"h x 19"w x 10"d.

600 – 900

❖ 3201

Chocolate Pot Service

Hand painted Japanese chocolate pot with gilt decorated handles and raspberries. Pot 11"h, saucers 5.5"round, cups 3.5"w

300 – 500

❖ 3202

Boehm "Patriot Eagle" Porcelain Sculpture

Limited edition, "Patriot Eagle" sculpture, featuring an eagle with wings spread holding the American flag. Signed on underside with a 1991 Gulf War dedication to President George Bush. 421/500. 23"h x 11"w

200 – 400

❖ 3203

Porcelain Figural Lamp

Porcelain figural oil lamp featuring cherub and applied florals, on brass base, with fringed shade, electrified. 35"h x 16"w

400 – 600

❖ 3204

Porcelain Figural Compote

German Meissen gilt porcelain figural compote with reticulated bowl over footed base with figures of children eating and applied floral and leaf decorations. 21"h x 15"w

400 – 600

❖ 3205

Hutschenreuther Selb Service Plates

Set of (8) Bavarian Hutschenreuther Selb light blue gold encrusted dinner plates. 11"round

400 – 600



DECORATIVE



❖ 3206
Japanese Porcelain Figure
 1880-1900, Kutani, seated dignitary in traditional garments. 11.5"h x 13"w x 8"d
400 – 600



❖ 3208
Japanese Porcelain Vase
 19th c. blue and white vase decorated with daffodils and a pair of swimming carp. 18"h x 10"w x 7.5"d
300 – 500



❖ 3207
Japanese Porcelain Vase
 19th c. Imari, finely decorated with soaring cranes and perched song birds among gilt decorated chrysanthemums. Signed. 18.5"h x 9"w x 6.5"d
300 – 500



❖ 3209
Japanese Porcelain Vases
 Pair of Imari ShiShi and chrysanthemum decorated vases, both signed. 15"h x 7"w x 5"d
400 – 600



❖ 3210
Japanese Porcelain Vases
 Pair of Imari vases, with exaggerated openings and vibrant blue decorated chrysanthemums on white ground. Signed. 17"h x 9"w x 8"d
400 – 600



❖ 3212
Japanese Porcelain Vase
 Late 19th/early 20th c. Fukagawa Koransha signed bud vase with elongated and neck and decorated with orange blue floral sprays. 8.5"h x 4"round
300 – 500



❖ 3211
Sang d'boeuf Vase
 19th c. Chinese earthenware vase with Sang d'Bouef glaze. 12"h x 9.5"round maybe flambe
500 – 800



❖ 3213
Ansonia Figural Mantel Clock
 Ansonia Clock Company, New York, ca 1880s. Ornate gilt metal clock with urn finial. Clock flanked by two women described as allegories of Art and Commerce. Black metal base with beveled front edge with decorative incised scrollwork. Front paw feet. Pendulum and clockworks intact. Marked on back. 20"h x 25.5"w x 9"d
800 – 1000



❖ 3214

French Mantel Clock

Ornate cast brass mantel clock, 8 day works. Enamel face with Roman numerals. Stamped on back plate of movement "A1 12926" and "DH" stamped on bottom (2x). Small chip on enamel face. 11.5"h x 8.25"w x 4.5"d

300 – 500



❖ 3215

Mantle Clock

Marble and gilt bronze mantle clock. Enamel face with Arabic numerals, surrounded with laurel wreath and ribbon on reeded marble column. 14"h.

300 – 500



❖ 3216

Gilt Bronze Planter

19th c. French Empire style, Egyptian revival bronze planter with sea scroll border, festoon center band raised on sphinx feet. 7"h x 17.5"w x 10"d

400 – 600



❖ 3217

Grand Tour Tazza

Late 19th/Early 20th c., profile bust of a Roman maiden in the center, soldier handles and goddess adornment with foliate banding. 10"h x 16"w x 12"d

300 – 500

❖ 3218

Marble and Bronze Tazza

In mottled black and green marble, with bronze mounts and floral central button and bands. Signed A.G. to base. 8.75"h x 12"w

400 – 600



❖ 3219

Fireplace Chenets

Pair of cast bronze figural chenets/andirons of recumbent lions on raised platform bases with brass mounted floral embellishments on front, measuring 12"h x 14.5"w x 4.75"d at base.

300 – 500



❖ 3220

Gilt Bronze Candelabra

Pair of gilt bronze four light candelabras, with acanthus leaf cups, raised on legs with rams heads and hoof feet, on triform base of black marble with gilt beaded edge. 26"h x 12.5"w

500 – 800



DECORATIVE



3221



3224

3222



3225



3223



3226

❖ 3221

Steuben Aurene Pitcher and Glass

Blue aurene iridescent art glass pitcher with cup, signed aurene 3064. Pitcher measures 5.25" h x 5" round. Cup measures 3" h x 2.5" round

300 – 500

❖ 3222

Delletrez "String of Pearls" Perfume Bottles

In original presentation case, with the original 11 bottles and the end pearls appear to have been replaced. Largest pearl measures 1" w. Box measures 2.25" h x 11.25" w x 2.25" d

500 – 800

❖ 3223

Milliner's Model

Hand painted papier mache milliner's model. Some wear to paint at base. 15" h x 6" w

500 – 800

❖ 3224

Abercrombie and Fitch Ottoman

Developed initially for Liberty of London this leather elephant later became part of a collection of animals designed by Dimitri Omersa and sold in the US by Abercrombie and Fitch. 23" h x 29" w

400 – 600

❖ 3225

Hermes Sac de Voyage Birkin 50 Tote

Leather Hermes travel bag, marked "Hermes Paris, Made in France." Staining on dust bag. 23" h (with handles) x 23" w x 11" d

2000 – 3000

❖ 3226

Miniature Tabletop Vitrine

19th c., In the form of desk, with gilt bronze mounts over faux tortoise shell veneer. Lined interior with back door, on decorated cabriole legs. 11" h x 14.5" w

500 – 800

❖ 3227

Carved Wooden Sconces

Pair of carved wooden sconces with gilt decoration. Featuring prominent eagle hovering over carved tapestry pulls and tassels. Wrought metal candle holders extend outwards on either side of hummingbird. 26"H

400 – 600



❖ 3228

Charles Schultz Signed Drawing

Signed marker drawing of Snoopy by Charles Schultz (1922-2000) Cartoonist and creator of the comic strip "Peanuts". Black marker on blue/gray paper shows a seated Snoopy with signature below "Schultz". Framed drawing measures 6"h x 5"w on paper measuring 8"h x 10"w housed in frame measuring 22"h x 17.75"w.

300 – 500



❖ 3229

Inuit Carving Grouping

Carved bone sculpture of a seated musician signed "Ray". 8"h x 6.5"w, carved whale bone polar bears measure 3"h x 7"w x 2"d. Signed and dated plate measures 5.5"w

300 – 500



❖ 3230

Buddha Statue

Sandstone seated Buddha statue measuring 9.75"h x 8"w x 6.25"d.

400 – 600



❖ 3231

Japanese Banko Teapots

Grouping of (2) Banko pottery figural teapots, including one adorned with sea life with bent wood handle (7.5" h including handle x 4.25" diameter), and "five face" teapot with raffia handle (frayed).

300 – 500



FURNITURE



❖ 3232

George Grim Pennsylvania Tall Case Clock

Signed "George Grim, Orwigsburg". Walnut case. Festoon style bonnet with three turned finials. Floral and vine marquetry on door with fluted quarter columns along waist and on a raised plinth with French feet. 8 day movement with a paint decorated moon phase dial, Arabic numerals, subsidiary second, and date dials. 103"h x 18.75"w x 10.25"d

3000 – 5000



❖ 3233

Jacob Hage, Lower Salford, PA Tall Case Clock

Signed "Jacob Hage Lower Salford". Early 19th c. Walnut case. Broken arched pediment with carved finial and turned rosettes. Reeded quarter columns along waist and plinth, with carved shell above door with ogee bracket feet. 30 hour works with a seascape paint decorated dial, and Arabic numbers. 93.5"h x 18"w x 10.5"d

2000 – 3000



❖ 3234

Wainwright, Nottingham, English Tall Case Clock

Attributed to John Wainwright. Signed "Wainwright Nottingham". Walnut case. Broken arch pediment with turned finial, fluted Corinthian columns along bonnet and waist. Single panel door over a raised plinth on ogee bracket feet. 8 day movement. Hand-painted moon phase dial with floral and aviary motifs, and Arabic and Roman Numerals. 91"h x 18"w x 8.25"d

1500 – 2500



❖ 3235

Ja. Roberts Pennsylvania Tall Case Clock

Signed "Ja. Roberts Easton Pa". Walnut case. Broken arch pediment with center urn finial and hood columns. Chamfered corners, arched trunk door on a raised plinth with ogee bracket feet. 8 day movement. Hand paint decorated floral dial with Arabic and Roman numerals. 89"h x 18.5"w x 9"d

1500 – 2500



❖ 3236

Berks County Tall Case Clock

Early 19th c. tiger maple and cherry case. Bonnet is flat form with four urn finials and hood columns. Waist with glass trunk door over a raised plinth base on turned feet. 8 day Hershede works. Ornate dial with moon phase, and Arabic numerals. 90"h x 21.5"w x 11"d

1000 – 1500



❖ 3237

Sheraton Tall Case Clock

Mahogany case. Broken arch pediment with three brass urn finials and fluted hood columns. Diagonal fluted columns along waist and plinth on four turned feet. 8 day movement with a paint decorated floral dial. Arabic and Roman numerals and subsidiary second and date dials. Veneer loss. 90"h x 19.75" x 11"d

1000 – 2000



❖ 3238

Fivey, Dublin, Irish Tall Case Clock

Signed "Fivey, Dublin". Mahogany case. Bonnet having a broken arch pediment with turned urn finial and matchstick molding. Reeded columns along bonnet, waist, and plinth over a shaped skirt and bracket feet. 8 day works. Paint decorated dial with Arabic and Roman Numerals. 90"h x 19"w x 8.5"d

1000 – 2000

FURNITURE



❖ 3239

Tall Case Clock

Mahogany case. Broken arch pediment with turned hood columns, chamfered sides, on raised plinth base with turned feet. 8 day works with a hand-painted aviary, decorative spandrels, Roman numerals, and moon phase dial. 86"h x 20"w x 9.5"d

800 – 1200



❖ 3240

Terrail French Provincial Tall Case Clock

Marked "Terrail Hger / a Auch". Painted green case with gold accents, hand-painted fruit motif on plinth. Bulbous waist with glass window, ornate pressed tin pendulum with figural decoration. 8 day works. Clock dial and surround is pressed tin and hand-painted. 84"h x 20"w x 8"d

500 – 800



❖ 3241

Bailey Banks & Biddle Tall Case Clock

Chiming tall case clock, marked "Bailey, Banks & Biddle Co., Philadelphia". Mahogany case, broken arch pediment ending in carved rosettes, center twist finial, fluted columns and full glass door on shaped feet. 8 day movement with ornate brass fretwork, Arabic numbers, and moon phase dial. 102"h 25"w x 15"d

1000 – 2000



❖ 3242

William Stanford New England Tall Case Clock

Signed "Wm. Stanford Yarmouth". Oak case. Bonnet with decorative brass eagle finials. Arched trunk door on a raised plinth over a shaped skirt. 8 day movement. Paint decorated dial with rose spandrels and a rural landscape. Arabic numerals. Subsidiary seconds and date dials. 87"h x 18.75"w x 9"d

800 – 1200



❖ 3243
**John Gorgas Lancaster
 County Tall Case Clock**

Signed, "John Gorgas in Ephrata". Walnut case with a broken arch pediment with floral carved rosettes and center urn finial, fluted column supports. Chamfered corners along bonnet and waist with a raised plinth on a shaped apron. 30 hour movement. Paint decorated aviary and floral dial with Arabic and Roman numerals. Veneer loss on base. 94"h x 19.5"w x 11"d
1000 – 2000



❖ 3244
**Bailey Banks & Biddle
 Tall Case Clock**

Chiming tall case clock, marked "Bailey, Banks & Biddle Co. Philadelphia". Mahogany case. Arched top with side windows, support columns with glass door on block feet. 8 day movement. Ornate brass dial with Arabic numerals, subsidiary seconds, and moon phases. 92"h x 28"w x 16.75"d
1000 – 2000



❖ 3245
**John More, London,
 Tall Case Clock**

Signed "John More London". Walnut case. Bonnet is flat form with stepped cornice. Long waist with rectangular door on a plinth base. Day works. 8 day works. Brass dial with ormolu mounted scrollwork and urn motif spandrels. Arabic and Roman numerals. 86.5"h x 16.34"w x 8"d
800 – 1200



❖ 3246
**Grenier French Provincial
 Tall Case Clock**

Marked "Grenier, a St. Gerandle-Puy". Pine case with red and floral paint decorated trunk and plinth raised on a shaped skirt. 8 day movement with Roman numerals, hand-painted flowers and an ornate pressed tin and brass surround. 89"h x 19"w x 10" d
500 – 800

FURNITURE



❖ 3247
Heriz Room Size Rug
Hand woven with a diamond and geometric central medallion. 12'7"l x 9'7"w
600 – 900



❖ 3249
Isfahan Room Size Rug
Hand woven with a diamond floral and vine central medallion in a repeating floral and navy blue field. 12'l x 9'w
600 – 900



❖ 3248
Serapi Room Size Rug
Hand woven with a geometric central medallion in salmon field. 13'l x 9'2"w
600 – 900

❖ 3250
Serapi Room Size Rug
Hand woven with a geometric medallion in a floral and vine field and ivory spandrels. 12'l x 6'6"w
600 – 900



❖ 3251

Peter Lovig Nielson for Dansk & Niels Moller

Danish Mid-Century Modern teak office suite featuring a Floating Top desk by Peter Lovig Nielsen for Dansk with six frieze drawers on one side and open compartments on the front side. Stamped on underside, 29"h x 61"w x 21"d. Includes complementing Danish arm chair by Niels Moller for J.L. Moller. Chair is stamped on underside.

400 – 600



❖ 3252

Pair of Charles Eames LCW Chairs

Calico ash molded plywood on tapered legs. 27"h x 22"w x 18"d

500 – 800



❖ 3253

Jeffrey Greene Walnut Palette Coffee Table

Jeffrey Greene Studios, Doylestown, PA. Carved signed "Jeffrey Greene" on underside resembling the artist's custom "Palette" table design. Table rests on three angular legs. 17"h x 43"w x 29"d

400 – 600



❖ 3255

Grapevine Free Form Sofa Table

Bevel glass top. 28"h x 54"w x 18"d

300 – 500

❖ 3254

Jeffrey Greene Spindle Back Chair

Jeffrey Greene Design Studio, Doylestown, PA. Signed "Jeffrey Greene I" on underside. Walnut frame with African wenge spindles and a ridged ultrasuede seat conforming resting on splayed legs. 44.5"h x 19.5"w x 19"d

400 – 600



❖ 3256

Joseph Greenberg Frame Mirror

Gilt with undertone and gesso scrolled frame. 25.5"h x 21.5"w

500 – 700



FURNITURE



❖ 3257
**Joseph Greenberg
Frame Mirror**
Gilt with red
undertones.
32"w x 9"w x 2"d
300 – 500



❖ 3260
**French Ormolu Mounted
Bookcase**
Mahogany with a marble top,
two festoon mounted drawers
over two doors with fruit and
foliate mounts, fluted apron on
bun feet, 48"h x 55"w x 17"d
400 – 600



❖ 3258
**Ornate Carved
Frame Mirror**
Shell and floral motif corners
scrollwork along border.
Butterfly joined construction
on reverse. 17"h x 17"w
200 – 300



❖ 3259
Neo Classical Style Mirror
Shield design with dimensional
gold painted plaster
adornments, including bow,
swags and tassels. 47"h x 35"w
200 – 300



❖ 3261
**Attributed to RJ Horner
Bow Front China Cabinet**
Mahogany with carved
Lamassu pilaster columns
flanking one glass door,
mirrored back, over carved
paw feet. 67.25"h x 45.75"w
x 17.25"d
600 – 900



❖ 3262
**Attributed to RJ Horner
 Bookcase**

Mahogany with heavily carved Griffin corners and foliate decoration, two doors over two drawers on paw feet. 66"h x 53"w x 15.75"d.
600 – 900



❖ 3264
French Credenza

Ebonized with burl thuya insets, ormolu mounts and porcelain figural and floral hand painted cartouches. Two-piece with a mirrored top and fluted support columns over a bottom with center glass door flanked by two panel doors. Fluted Corinthian columns on either side of doors, serpentine apron, on turned bun feet. 87"h x 66"w x 17"d
400 – 600



❖ 3263
**Early 20th c. American
 Cabinet Co. Dental Cabinet**

Mahogany case. Shallow step-back top with a three glazed door hood with milk glass inserts and a beveled mirror. Bottom cabinet with graduated tin drawers atop a faux marble base. 63"h x 49"w x 13"d
800 – 1200



❖ 3265
French Sideboard

Ebonized with burl mahogany insets, ormolu mounts and decorative porcelain figural and floral hand painted cartouches. Three drawers over two doors with a two tiered mirrored back flanked by two doors on turned bun feet. 41"h x 72"w x 17.5"d
400 – 600

FURNITURE



❖ 3266
**Chinese Rosewood
 Altar Table**
 Burl-rosewood three
 panel top, scrolled ends
 with carved dragon
 motifs, fretwork frieze
 on straight molded legs.
 32.5"h x 49.5"w x 16"d
800 – 1200



❖ 3268
Sheraton Arm Chair
 Ebonized and stenciled with urns,
 floral, and foliate motifs. Pierced splat,
 bentwood arms conforming to turned
 tapered legs. 33.5"h x 21"w x 19"d
200 – 400

❖ 3267
**Pair of Chinese
 Chippendale
 Rosewood Arm Chairs**
 Shaped crest with a
 carved pierced splat,
 open hand shaped arms,
 plank seat, conforming to
 carved molded knees on
 claw and ball feet. 39"h x
 22.5"w x 18"d
800 – 1200



❖ 3269
Ladderback Arm Chair
 Blue painted. Two ball finial rail tops
 with serpentine bow back splats, rush
 seat on turned legs with a bulbous ball
 and wafer turned stretcher.
 44"h x 23.5"w x 17.5"d
200 – 300



❖ 3270
**Hoop Back Windsor
 Arm Chair**
 Ebonized with turned
 spindles and continuous
 arm, rush panel seat
 on turned legs.
 43"h x 26.5"w x 17.5"d
200 – 300

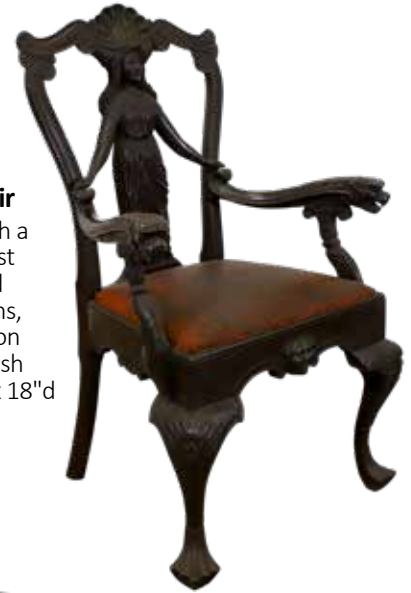


❖ 3272

Richly Carved Chippendale Armchair

Ebonized mahogany with a scrolled shell carved crest conforming to a caryatid splat. Canine carved arms, face carved scrolled apron and knees on molded Irish trifold feet. 41"h x 27"w x 18"d

300 – 500



❖ 3271

Richly Carved William and Mary Chairs

Gentleman's and Lady's chairs with ornate carved ebonized oak aviary, fruit and vine motif backs, gadrooned seat edging. Barley twist frame on block and turn feet. Gentleman's chair 48"h x 26"w x 22"d and Lady's chair 44.5"h x 20.5"w x 19"d

400 – 600



❖ 3273

Pair of Ornate Carved Oak Pteranthrope Armchairs

Heavily carved frame with rosettes, shells and scrollwork motifs. Carved arm supports of a Mongolian warrior with wings conforming to straight legs on paw feet. Tufted back. 43.75"h x 28"w x 23"d

400 – 600



❖ 3274

Renaissance Revival Marquetry Games Table

Foliage and diamond marquetry top with a velvet inset games surface with ebonized incised legs and gallery rail stretcher base, on casters. 28.5"h x 39"w x 19.5" (39"w open).

300 – 500



❖ 3275

Inlaid Blanket Chest

Oak with two tone inlaid star motif, raised on tapered feet, with iron hardware. 29.5"h x 44.5"w x 26.5"d

200 – 300

FURNITURE

❖ 3276

Chippendale Country Pine Blanket Chest

Two piece chest with the top opening to an interior over a bottom two drawers with shaped bracket feet. 29.5"h x 36.5"w x 17"h

200 – 400



❖ 3277

Pennsylvania Walnut Blanket Chest

Top with fitted interior over two drawers base with dovetailed edges on shaped bracket feet. 20.5"h x 51.5"w x 22.25"d

200 – 400



❖ 3278

Trestle Pub Table

Pine, two tier, vasiform legs with mortise and tenon joinery, resting on shaped block feet. 30"h x 89"w x 19.25"d

600 – 900



FINE ART



❖ 3279

Georges van der Straeten (1856 - 1928)

Bronze, "Danseuse étoile", signed and Société des Bronzes de Paris foundry mark. Figural bronze of a ballerina poised upon the point of a star. 31.5"h x 13.5"w x 11"d

3000 – 5000



❖ 3282

Louis Holweck (1861 - 1935)

Resin, "Obelisk", SLR. Pyramidal shaped sculpture with a natural essence. 31"h x 8.25"square

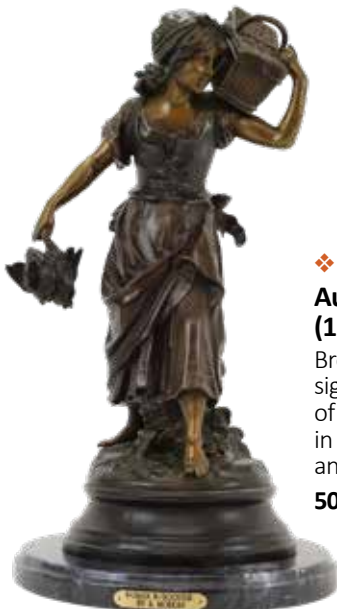
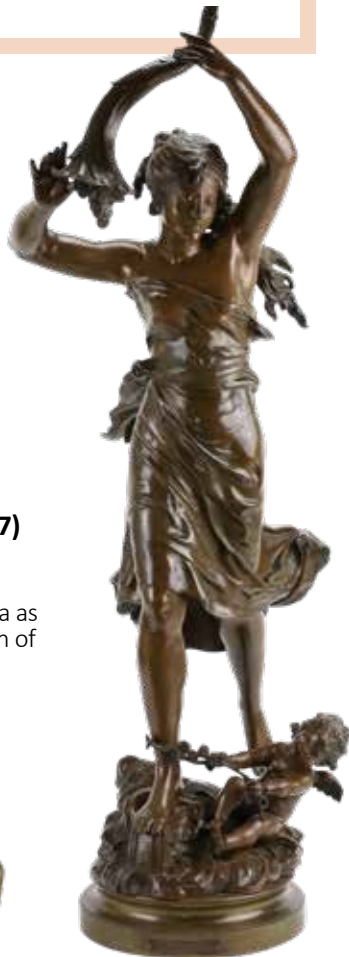
800 – 1200

❖ 3280

Auguste Moreau (1834 - 1917)

Bronze, "L'Amour Enchainant La Fortune", signed. The goddess spilling coins from her cornucopia as Cupid lassoes her leg with a chain of roses, 34.5"h x 13"w x 16"d

500 – 800

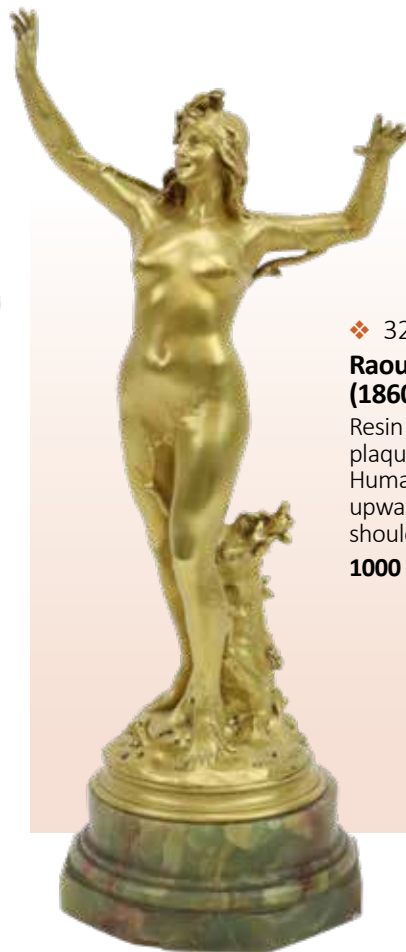


❖ 3281

Auguste Moreau (1834 - 1917)

Bronze, "Woman with Rooster", signed. Figural bronze statue of a woman holding a rooster in one hand and a basket in another. 24.5"h x 13"w x 10"w

500 – 800



❖ 3283

Raoul Francois Larche (1860 - 1912)

Resin and wood. Figural wall plaque, Signed and dated, '70. Human figures (6) climbing upward on each other's shoulders. 41.25"h x 5.5"w

1000 – 2000

FINE ART



❖ 3284

Ferdinand Leveillain (1837 - 1905) and Ferdinand Barbedienne (1810 - 1892)

Bronze, Signed. Neo-classical urn with double handles above bearded masks and flowering vines in low relief, mottled maroon marble plinth. 5"h x 5.5"w

400 – 600



❖ 3286

Giambologna (1529 - 1608)

Bronze, depiction of the famed statue "The Rape of the Sabine Women" from the Palazzo Vecchio in Florence. 13"h x 4.5"h

500 – 800



❖ 3287

Jean-Antoine Injalbert (1845 - 1933)

Bronze, "L'Enfant rieur" (The laughing child), signed. Bust of a young girl smiling over her shoulder. Has Siot Paris foundry mark. 11"h x 6"w including plinth

400 – 600



❖ 3285

Emmanuel Villanis (1858 - 1914)

Bronze, signed base. Figural bronze of a peasant girl and her mandolin. 15.75"h x 7"w x 7"d

400 – 600

❖ 3288

J. Wallace Kelly (1894 - 1976)

Limestone, "Harlequin", signed and dated '25, Modernist sculpture of a clown. 21"h x 5.75" round

1000 – 2000



❖ 3289

Chester Fields (born 1945)

Bronze statue, Chester Fields 1986 20/24, SDLL. Two eagles fighting mid flight. Tip of feather damaged, but included. 52.5"h x 38"w x 40"d

2000 – 4000



❖ 3290

Mathurin Moreau (1822 - 1912)

Alabaster statue and pedestal, signed "Moreau" at base. Pedestal marked "Italy". Young maiden in peasant dress, with flowers and wheat. Measures 45.5" h x 11" round.

500 – 800



❖ 3293

Charles Brinton Cox (1864 - 1905)

Cast bronze statue, "El Texan Vaquero", signed "Chas Brinton Cox, copyright 1898" with foundry mark "Bureau Bro Phila" on base. Cowboy holding lasso, riding a horse mid gallop. 16"h x 16.5"w x 6"d

300 – 500

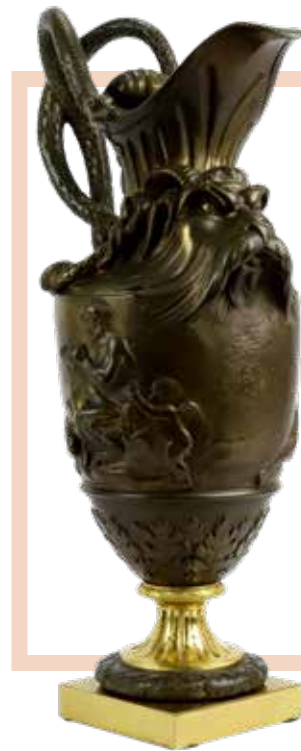


❖ 3291

Duchoiselle (19th c.)

Bronze, "Allegory in Fishing", signed. Native American woman in a dugout canoe with a spear. 24"h x 36"w x 11"d

800 – 1200



❖ 3294

Sigisbert Francois Michel (1728 - 1811)

Bronze ewer, modeled after Sigisbert Francois Michel, with scaled serpent handles, Satyr and nymph scenes and finely detailed horned face. Unsigned, with small amounts of original gilding remaining. 18.5"h x 7.5"w x 10.75"d

1000 – 2000



❖ 3292

Auguste Rodin (1840 - 1917)

Bronze, "Gustav Mahler", signed. Bust of famed composer. 14.5"h x 9" round

300 – 500



❖ 3295

Ferdinand Lugerth (1885 - 1915)

Bronze, signed on base. Figural statue of a well dressed Victorian woman on marble base. 10.5"h x 4"w x 4"d

400 – 600

FINE ART



❖ 3296

Ben Marcune (20th c.)

Bronze, unsigned. Patinated bust suspended over green marble. 14.5"h x 15.5"w x 13.5"d

300 – 500



❖ 3297

Robert Whitley (20th c.)

Walnut, signed, dated and inscribed "Solebury", Bucks County PA, October 1983. Tabletop sculpture of a lightning bolt piercing a haloed sphere. 18"h x 11" round

500 – 800



❖ 3298

Antonio Martino (1902 - 1988)

Oil on board, "Along the railroad tracks", 1965, SLR. Overcast winter landscape of an urban setting. 12.25"h x 19"w sight and 1935"h x 26.5"w framed

1000 – 2000



❖ 3299

John Berninger (1897 - 1981)

Oil on board, "Mill Stream", SDLL, '28. Autumn landscape with a large mill and outbuildings. 20"h x 24"w and 25.5"h x 29.5"w framed

2000 – 4000



❖ 3300

Alfred Gwynne Morang (1901 - 1958)

Oil on board, "Guadalupe Church, Santa Fe," SDLL, '45. Modernist landscape of a Church and courtyard. 12"h x 16"w and 22"h x 26"w framed

2000 – 3000



❖ 3301

Jack Butler Yeats (1871 - 1957)

Oil on board, "Sea and Lake", SLR. Coastal landscape with approaching weather. 9.25"h x 14"w and 16"h x 21"w framed

30000 – 50000

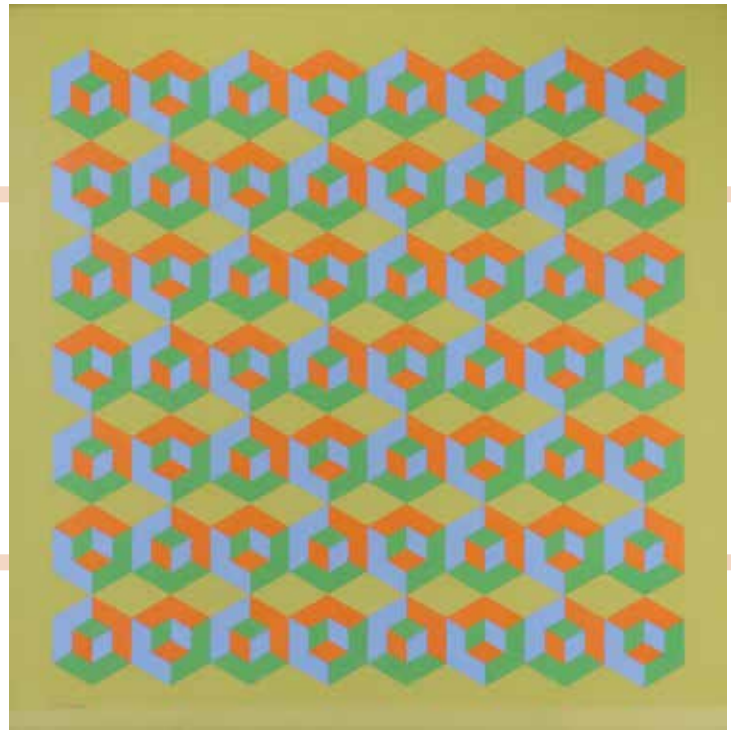
FINE ART

❖ 3302

Edna Andrade (1917 - 2008)

Casein on board, "Jumping Blocks - 2", SLL. Geometric image with repeating and rotating effects. Museum of Modern Art and Marian Locks Gallery labels en verso. 30"h x 30"w and 30.25"h x 30.25"w framed

5000 – 8000



❖ 3303

Henry Rand (1886 - 1961)

Oil on board, "Ash Mill House", SLR. Autumn landscape with a home through trees. 10"h x 12"w and 15"h x 16.5"w framed

800 – 1200



❖ 3304

Thomas Birch (1779 - 1851)

Oil on canvas, SLR. Coastal landscape with turbulent surf and masted ship in the distance. 10"h x 14" and 15" x 19" framed

3000 – 5000



❖ 3305

Richard Crist (1909 - 1985)

Oil on canvas, "Landscape Autumn", SDLR, '42. Boldly colored landscape. 22"h x 32"w and 27"h x 38"w framed

1000 – 2000



❖ 3306

Oil on Canvas

Oil on canvas, unsigned, late 18th century, Colonial American School. Portrait of young girl with feline companion. Evidence of restoration. 25.5"h x 19.75"w and 30.5"h x 24.5"w framed

3000 – 5000



❖ 3307

Oil on Board

Oil on board, unsigned. 19th c. American primitive Susquehanna Valley landscape. 24"h x 30"w and 28.5"h x 35"w framed

500 – 800



❖ 3310

Andre Gisson (1921 - 2003)

Oil on canvas, SLR. Impressionist landscape of a carousel. 24"h x 30"w and 34"h x 40"w framed

800 – 1200



❖ 3308

John Grabach (1886 - 1981)

Oil on board, "The Music Master", SLL. Portrait of a concert violinist. 6"h x 8"w and 7.5"h x 9.5"w framed

400 – 600



❖ 3309

Maxim Bugzester (1910 - 1978)

Oil on board, SDLR. Expressionist landscape with a mother and a child by a stream. 15.5"h x 27"w and 19"h x 30.5"w framed

400 – 600



❖ 3311

Thomas Birch (1779 - 1851)

Oil on board, SLL. Winter landscape with a fox hunting pheasants. 17"h x 31"w sight and 24"h x 38"w framed

3000 – 5000

FINE ART



❖ 3312

Dorothy Van Loan (1904 - 1999)

Oil on canvas, SUR. Behind the curtain circus scene with horse and handlers, entertainers and stage hands, with trapeze artists in the air. 40"h x 60"w and 46"h x 66"w framed

1500 – 3000



❖ 3313

Roscoe Magill (1881 - 1950)

Oil on board, Initialed lower right and inscribed en verso, "From your good doctor". Modernist pastoral landscape with farmhouse and outbuildings. 12"h x 16"w and 16"h x 20"w framed

2000 – 3000



❖ 3315

Theodore Clement Steele (1847 - 1926)

Oil on board, SLL. Landscape of a path through a dense forest. 12"h x 18"w and 15"h x 21"w framed

4000 – 6000



❖ 3314

Charles Warren Eaton (1857 - 1937)

Oil on canvas, "The Parapet - Varenna", SLL. Landscape view over water with large villa in distance and architectural elements in forefront. 29.5"h x 26"w framed

3000 – 5000



❖ 3316

Paul Henry, R.H.A., R.U.A. (1876 - 1958)

Oil on panel, "Lough Derg" SLR. Landscape with Celtic High Cross in the foreground. Plaque on frame reads "Lough Derg" Provenance: h.e. Sean T. O'Kelly President of Ireland (1945 – 1959). Oriel Gallery tag en verso. 24"h x 22"w and 32.5"h x 30.5"w framed

30000 – 50000



❖ 3317

**Walter Emerson Baum
(1884 - 1956)**

Oil on canvas, "River View",
SDLR '43. Sprawling landscape.
40"h x 50"w and
46"h x 56"w framed

10000 – 15000



❖ 3318

**Walter Emerson Baum
(1884 - 1956)**

Oil on canvas, SLL. Winter
landscape with a stream.
30"h x 36"w and
39" x 45"w framed

10000 – 15000



❖ 3319

Walter Emerson Baum (1884 - 1956)

Oil on board, "Blue Mountain Scene," SLL. Snowy rural landscape. 12"h x 16"w and 17.5"h x 21.5"w framed

1000 – 2000



❖ 3321

Jean Halter (1916 - 1981)

Oil on canvas, SCLR, 1957. Winter landscape with ice skaters, horse drawn sleigh, steam locomotive and a frozen lake. 24"h x 36"w and 31"h x 43"w framed

2000 – 3000



❖ 3320

Walter Emerson Baum (1884 - 1956)

Oil on board, "Art Student," SLR, 1952. Portrait of female painter surrounded by sculpture and paintings. 32"h x 28.5" and 34"h x 30.25"w framed

1000 – 2000



❖ 3322

Jean Halter (1916 - 1981)

Oil on board, SLR. Winter landscape with farmhouse, horse drawn sleigh and a steam locomotive in the distance, original Halter frame. 12"h x 16"w and 19.5"h x 23.5"w framed

1000 – 2000



❖ 3323

Jean Halter (1916 - 1981)

Oil on board, "Lambertville", SLR. Folk art village scene with horse drawn sleigh, children at play and a stream, original Halter frame. 12"h x 16"w and 17.5"h x 21.5"w framed

1000 – 2000

FINE ART



❖ 3324
Jean Halter (1916 - 1981)
Oil on board, SLR. Winter landscape of a village with children at play, original Halter frame. 12"h x 16"w and 19"h x 23"w framed
1000 – 2000



❖ 3325
Oil on Canvas
Oil on canvas, "Interference" SLL with abrasion and repair "C. Wyeth", Illustrator style landscape with hunters and a farmer. Appears to be the original artwork for the 1927 Western Ammunition calendar. 38"h x 30"w and 40"h x 32"w framed
5000 – 10000



❖ 3326
Carl Wilhelm Hubner (1814 - 1879)
Oil on canvas, "The Reading Hour", SDLL, 1863. Interior vignette with a child reading to three generations of family. Portrait of Martin Luther hanging on the wall. 27"h x 34"w and 38"h x 45"w framed
1500 – 3000



❖ 3327
Christopher Willett (born 1959)
Oil on board, "N.Y.C Strand Theater", SLL and en verso. Evening urban landscape of the bustling metropolis. 8"h x 7.75"w and 8.75"h x 8.75"w framed
600 – 900



❖ 3328

Christopher Willett (born 1959)

Oil on canvas, "Back Road Tinicum", SLR. Winter evening landscape. 16"h x 20"w and 23.5"h x 19.5"w framed

800 – 1200



❖ 3330

Walter Mattern (1892 - 1946)

Oil on board, "Meadow Glow", SLR. Pastoral landscape with farmhouses and a brook. 25"h x 30"w and 31"h x 36"w framed

1000 – 2000



❖ 3329

Christopher Willett (born 1959)

Oil on canvas, SLR. Rural landscape with farmhouse and outbuildings. 16"h x 20"w and 21"h x 25"w framed

500 – 800



❖ 3331

John (Sir John) Lavery (1856 - 1941)

Oil on canvas, SDLR, 1903. Inscribed "To Mrs. Burrell, with many thanks" Portrait of a woman. 17"h x 14.5"w and 24"h x 22"w framed

10000 – 15000

FINE ART

❖ 3332

Ben Marcune (20th c.)

Oil on canvas, "Main Street at Twilight", SLR. Urban landscape with state building and bell tower with partial architectural ruins in the foreground.

24"h x 48"h and 30"h x 54"w framed

600 – 900



❖ 3333

Ben Marcune (20th c.)

Oil on board, SLR. Canal lock with red house.

23.75"h x 31.5"w and 29.75"h x 37.75"w framed

300 – 500



❖ 3335

Ben Marcune (20th c.)

Oil on board, SLL. Pastoral winter landscape with farmhouse and outbuildings. 15.5"h x 19.5"w and 21"h x 25.5"w framed

400 – 600



❖ 3334

Ben Marcune (20th c.)

Oil on board, SDLR, street scene, 1992. 35.75"h x 24"h and 37"w x 25"h framed

300 – 500



❖ 3336

Ben Marcune (20th c.)

Oil on board, SLR. Impressionist forest landscape in David Medairy frame. 19.5"h x 16"w and 24"h x 21"w framed

300 – 500



❖ 3337

Walter Emerson Baum (1884 - 1956)

Oil on board, unsigned. Urban landscape. 7"h x 10"w and 12"h x 15"w framed

800 – 1200



❖ 3339

Walter Emerson Baum (1884 - 1956)

Oil on board, SLL. Impressionist riverscape. 25"h x 30.25"w and 33"h x 38"w framed

1000 – 2000



❖ 3338

Walter Emerson Baum (1884 - 1956)

Oil on board, "Signs of Spring", SLR and inscribed and dated en verso, "Painted Southeast of Perkasio, 1942". Sprawling impressionist rural landscape. 16"h x 20"w and 22"h x 26"w framed

1000 – 2000

❖ 3340

Walter Emerson Baum (1884 - 1956)

Oil on board, SLR and signed, titled and dated en verso, "Bloss Meine Hexenkopf" 1923. Landscape with farm and outbuildings in background. 15.25"h x 19.25"w and 17.25"h x 21.25"w framed

1000 – 2000



FINE ART



❖ 3341

**Walter Emerson Baum
(1884 - 1956)**

Oil on canvas, "Branch Valley, PA", SLR and dated en verso 1939. Winter landscape peering down into a valley with homes and farmland. 16"h x 20"w and 20"h x 24"w framed

3000 – 5000



❖ 3342

Bennett Bradbury (1914 - 1991)

Oil on canvas, "The Big Sur", SLL and en verso. Turbulent coastal landscape. 40"h x 80"w and 48"h x 88"w framed. Provenance: The Collection of Richard E. and Elisabeth S. Poole

3000 – 5000



❖ 3343

**Bennett Bradbury
(1914 - 1991)**

Oil on canvas, "Garrapata Surf",
SLR. Coastal landscape.
30"h x 60"w and 38"h x 69"w
framed. Provenance:
The Collection of Richard E.
and Elisabeth S. Poole
2000 – 3000

❖ 3344

**Charles Warren Eaton
(1857 - 1937)**

Oil on canvas, "Evening in
Holland", SLL and titled en
verso. Landscape at dusk
with a windmill in a pasture.
20"h x 24"w and 26.5 "h x
29.5"w framed
2000 – 3000



❖ 3345

**Charles Warren Eaton
(1857 - 1937)**

Oil on canvas, SLR, Autumn
forest landscape with stream.
12"h x 16"w and
15.5"h x 20"w framed
1500 – 3000

FINE ART

❖ 3347

Christopher High Shearer (1846 - 1926)

Oil on canvas, laid down on masonite, "Wood Scene", SDLR, 1916. Autumn forest landscape. 36"h x 48"w and 41.5"h x 53.5"w framed

1000 – 2000



❖ 3346

Andrew Woehrel (born 1958)

Oil on board, "Evening Along The Delaware", SDLL, '12. 14"h x 17"w and 19.5"h x 22.5"w framed

800 – 1200



❖ 3348

Dan Cavaliere (born 1928)

Oil on Canvas, "Summer Shadows, Independence Hall", SLL and en verso SDLR. 46"h x 50"w and 53"w x 57"w framed

500 – 800



❖ 3349

Henry Gasser (1909 - 1981)

Watercolor, SLL. pastoral landscape through brush with farmhouses.

7.25"h x 9.5"w sight and 15"h x 17"w framed

600 – 900



❖ 3352

Andre Gisson (1921 - 2003)

Oil on canvas, SDLL '72, Impressionist portrait of a seated a nude. 16"h x 20"w and 25"h x 29"w framed

800 – 1200



❖ 3350

August Mosca (1907 - 2003)

Oil on canvas, SLL. Modernist landscape with a nude couple under a tree. 23"h x 28"w and 31"h x 36"w framed

400 – 600

❖ 3353

Allen Dean Cochran (1888 - 1971)

Oil on board "Autumn Mountain", signature and title en verso. Rural winter landscape with outbuildings. 8"h x 10"w and 10.75"h x 12.75"w framed

800 – 1200



❖ 3351

Raoul Dufy (1877 - 1953)

Ink on paper, SLR. Figural nudes in a pastoral setting with an urban landscape in the background. 10"h x 13"w sight and 20"h x 24"w framed

1000 – 2000



❖ 3354

Bernard Badura (1896 - 1986)

Bernard Badura hand carved frame, SD en verso, "Frame by Badura New Hope, Pa, Oct 60". 21.25"h x 27.25"w

500 – 800

FINE ART



❖ 3355
**Joseph J. Greenberg Jr.
(1915 - 1991)**

Patinated epoxy or fiberglass, "Artist and Muse" Whimsical self portrait with the artist in process of creating female nude from "stone". Male figure clothed only in work apron and holding hammer and chisel.

43"h x 20.25"w x 9.5"d

500 – 800



❖ 3357
**Joseph J. Greenberg Jr.
(1915 - 1991)**

Painted fiberglass, "Mother Bear and Cubs". Same form as granite sculpture at the Philadelphia Zoo.

17.5"h x 25"w x 13"d

500 – 800



❖ 3356
**Joseph J. Greenberg Jr.
(1915 - 1991)**

Gold leafed fiberglass, signed. Crane with wings spread and neck extended.

21.5"h x 14"w x 12"d

300 – 500

❖ 3358
**Joseph J. Greenberg Jr.
(1915 - 1991)**

Plaster, "Italian Countess", unsigned. Female form with eyes closed and painted gray.

16.25"h x 14.25"w x 6.75"d

300 – 500





❖ 3359

Joseph J. Greenberg Jr. (1915 - 1991)

Carved wood sculpture, "Daphne". Nude female form metamorphosing into a tree. 26"h x 6.25"w x 13.25"d

300 – 500



❖ 3361

Emil Hermann (1871 - 1966)

Oil on canvas, SLR, 1947. Stream at sunset. 22"h x 27"w and 27"h x 32.5"h framed

1000 – 2000



❖ 3360

Emily Budell (1884 - 1981)

Oil on canvasboard, SLR. Pastoral landscape with farmhouse and outbuildings. 12"h x 16"w and 19"h x 22"w framed

300 – 500



❖ 3362

Franz Jozef (1927 - 2004)

Oil on board, "F. Kaiser", SLL. Industrial futuristic landscape. 17.5"h x 23.5"w sight and 20.5"h x 26.5"w framed

600 – 900

FINE ART



❖ 3363

Jean Halter (1916 - 1981)

Oil on board, SLR. Pastoral landscape with a Sunday processional, original Halter frame. 8"h x 10"w and 15.5"h x 17.5"w framed

1000 – 2000



❖ 3365

Franz Jozef (1927 - 2004)

Oil on board, "Every false hero at last becomes a bore", unsigned. Depicts clay tablets of warriors in various states of disrepair. 30"h x 23.5"w sight and 33.25"h x 27"w framed

600 – 900



❖ 3364

Jean Halter (1916 - 1981)

Oil on board, SLR. Folk art style interior scene of a Victorian dinner, original Halter frame. 12"h x 16"w and 18"h x 22"w framed

600 – 900



❖ 3366

Edmund Darch Lewis (1835 - 1910)

Watercolor, "Sailboat Leaving Rowboats", SDLL, 1895. Coastal landscape with sailing ship on the horizon. 9.25"h x 20"w sight and 19.75"h x 30.5"w framed

300 – 500



❖ 3367

Jean Halter (1916 - 1981)

Oil on board, SLR. Complementing pair of children portraits. Young lady with kitten and young gentleman with pull toy, both in original Halter frames. 10" h x 8" w and 16" h x 14" w framed

600 – 900



❖ 3368

Jean Halter (1916 - 1981)

Oil on board, SLR. Portrait of a young girl holding her doll. 10" h x 8" w and 17.5" h x 15" w framed

300 – 500

❖ 3369

Willard Gayheart (20th c.)

Pencil on paper, "Perfect Harmony", SDLL, '90, Photo-realistic drawing of a grandfather playing the harmonica with his grandson. 28.75" h x 22.5" w sight and 37" h x 31" w framed

400 – 600



❖ 3370

Willard Gayheart (20th c.)

Pencil on paper, "Return to Service", SDLL, '91. Photo realistic drawing of farmhands and plow horses in the field. 22" h x 28" w sight and 32" h x 38" w framed

400 – 600

FINE ART

❖ 3371

Wayne Forbes (1945-2013)

Wood sculpture, "Clone Fix II", 1980. Affixed plaque "Clone Fix II by Wayne Forbes September 1980, this sculpture was funded in part by a grant from the Illinois Art's Council a state agency". Surreal double sided figural sculpture within freestanding dimensional frame. 86.5"h x 59.5"w x 25"d

1000 – 2000



❖ 3372

Wayne Forbes (1945-2013)

Wood sculpture, "Clone Fix IV", unsigned. Surreal sculpture, figures in crucifixion like pose. 71"h x 46"w x 23"d

1000 – 2000

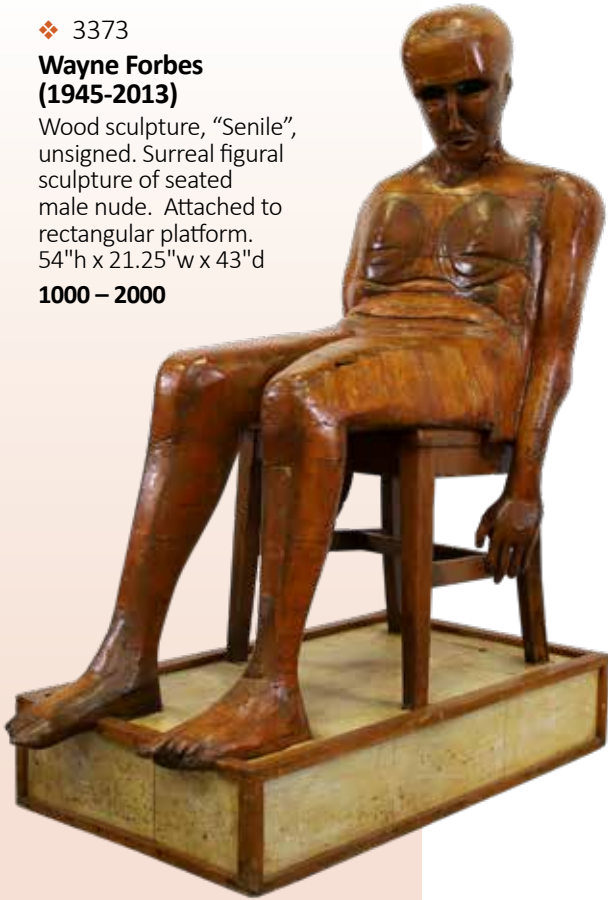


❖ 3373

Wayne Forbes (1945-2013)

Wood sculpture, "Senile", unsigned. Surreal figural sculpture of seated male nude. Attached to rectangular platform.

54"h x 21.25"w x 43"d
1000 – 2000



❖ 3375

Wayne Forbes (1945-2013)

Bronze sculpture, "Resurrection". Two piece bronze sculpture sitting on composite base. Twisted stem and twigs protruding from center and rests on a pyramid of hands.

19"h x 9"w x 9"d and 23"h x 13.5"w x 13.25"d base
600 – 900



❖ 3376

Wayne Forbes (1945-2013)

Large mixed media sculpture, unsigned. Surreal latex head emerging from pile of overlapping leaves and hands. Sits on "base" of multiple tentacles, made from coated canvas-like material and stuffed with soft filler. Excluding tentacles, approximately 37"h x 35"w x 35"d and tentacles range in length 90"-140"

500 – 800



❖ 3374

Wayne Forbes (1945-2013)

Mixed media sculpture, unsigned. Surreal latex head with peeling layered face above hands clasping a "tail". Tail serves as an electrical cord (working order) for light bulb within head. Head measures 16"h x 12"w x 11"d and tail/cord length 126"

1000 – 2000



❖ 3377

Wayne Forbes (1945-2013)

Composite and wood sculpture, unsigned. Rounded corner "headstone" with hinged doors, opens to reveal carved Jesus head with crown of thorns and vacant eyes.

20"h x 20"w x 8"d
400 – 600

FINE ART



❖ 3378

William D. Gorman (1925 - 2005)

Casein, SLR. Urban winter vignette with a boxcar at a loading dock. 8.25"h x 20"w sight and 17"h x 28.5"w framed

400 – 600



❖ 3381

Andre Gisson (1921 - 2003)

Oil on canvas, "Heather Blue Velvet", SUL. Impressionist floral still life. 24"h x 30"w and 32.5"h x 38.5"w framed

400 – 600



❖ 3379

S. Hildesheimer Co. (19th c.)

Photogravure, "Australia v. England", ca 1887. Photogravure of painting by George Hamilton Barrable and Sir Robert Ponsonby Staples, printed by Goupil; Co and published by S. Hildesheimer; Co. Limited London; Manchester. Cricket match with stadium of onlookers. Portraits of notable players at bottom. 26"h x 42"w sight, 35"h x 51"w framed

200 – 300

❖ 3380

Pierre Eugène Duteurtre (1911 - 1989)

Oil on canvas, "Drugstore", Interior vignette of a waiter serving desserts to teens at a soda fountain style drugstore. 45.5"h x 35"w x 51"h x 41"w framed

400 – 600



❖ 3382

Joseph J. Greenberg Jr. (1915 - 1991)

Resin, "Obelisk", SLR. Pyramidal shaped sculpture with a natural essence. 31"h x 8.25"square

300 – 500

❖ 3383

Joseph J. Greenberg Jr. (1915 - 1991)

Resin and wood. Figural wall plaque, Signed and dated, '70. Human figures (6) climbing upward on each other's shoulders. 41.25"h x 5.5"w

200 – 300





3384



3387



3385



3386



3388

❖ 3384

Ben Marcune (20th c.)

Oil on board, SLR. Winter landscape with a stream, in David Medairy frame. 16"h x 19.5"w and 22.25"h x 25.75"w framed
300 – 500

❖ 3387

Ben Marcune (20th c.)

Oil on board, SLR, Landscape with a brook and overhanging trees, David Medairy frame. 15"h x 18.5"w and 21.5"h x 24.5"w framed
500 – 800

❖ 3385

Ben Marcune (20th c.)

Oil on board, SLL. Autumn landscape with stream. 16"h x 20"w and 22"h x 26"w framed
300 – 500

❖ 3388

Ben Marcune (20th c.)

Oil on board, SLR. Rural landscape with farms and outbuildings, in David Medairy frame. 16"h x 19.75"w and 20.75"h x 24.75"w framed
600 – 900

❖ 3386

Ben Marcune (20th c.)

Oil on board, SLR. Rural landscape with snow and stream. Mountain in background. 15.5"h x 19.25"w and 21.75"h x 25.5"w framed
600 – 900

FINE ART



❖ 3389

Wayne Forbes (1945-2013)

Metal and neon sculpture, unsigned. Mesh helmet-like sculpture with protruding spikes, surrounded by neon red and blue ring (working order). 10"h x 18"w x 18"d

300 – 500



❖ 3390

Wayne Forbes (1945-2013)

Plaster dipped sculpture, unsigned. Collection of New Balance tennis shoes, inner soles and laces dipped in plaster and arrange on oblong platform. 9"h x 30"w x 23"d

300 – 500



❖ 3391

Wayne Forbes (1945-2013)

Latex, plastic and neon sculpture, unsigned. Latex head of overlapping faces, sitting on bed of latex and plastic leaves and surrounded by neon red ring (working order). 12"h x 20"w x 20"d

300 – 500

❖ 3392

Wayne Forbes (1945-2013)

Wood sculpture, "Harbinger," horseman #1. Surreal carving of horse with winged human rider in reclining position. Proper left thigh of horse branded with "1". 53"h x 58"l x 34"w

1000 – 2000



❖ 3393

Wayne Forbes (1945-2013)

Wood sculpture, unsigned. Surreal sculpture of a horse with a cross piercing back and protruding through chest. Human face and arms extending from horse's neck. 62"h x 70"l x 34"w

1000 – 2000



❖ 3394

Wayne Forbes (1945-2013)

Brass and composite sculpture, unsigned. Surreal sculpture of a brass arrow inserted into circular composite base. Attached to shaft are dimensional overlapping faces.

20"h x 5" diameter base
600 – 900



❖ 3396

Wayne Forbes (1945-2013)

Silicone and plaster mold of artist's face. May have been used in lot #5109. 17.75"h x 18"l x 3.5"d. Silicone mold of child's face surrounded by large leaves in a sun-like pattern.

Measures 25"h x 24"w
200 – 300

❖ 3395

Wayne Forbes (1945-2013)

Mixed media painting, unsigned. Surreal oil on canvas of two human figures and dimensional embedded catheters, scissors and additional hardware.

70"h x 60"w x 2.25"
1000 – 2000



❖ 3397

Wayne Forbes (1945-2013)

Fired clay and iron filings hanging sculpture, "Clonal Artifact #1". Affixed label on back "Clonal Artifact #1 Fired Clay Iron Filings Wayne Forbes". Surreal figure emerging from an egg-like form. In aluminum surround.

16"h x 13"w x 4.5"d
200 – 400



FINE ART



❖ 3398

Wayne Forbes (1945-2013)

Fired clay and iron filings hanging sculpture, "Clone Sack, Artifact #4". Affixed label on back "Clone Sack, Artifact Wayne Forbes 113 Theodore St Washington, IL 61571 Media: Ceramix (Fired Clay/Iron Fillings)". Surreal figures "escaping" from a sack-like form. Aluminum surround. 16"h x 16"w x 3.25"d

200 – 400



❖ 3399

Wayne Forbes (1945-2013)

Fired clay and iron filings hanging sculpture, "Clone Sack, Artifact #2". Affixed label on back "Clonal Artifact #2 Fired Clay Iron Filings Wayne Forbes". Surreal figures emerging from a egg-like form. Aluminum surround. 16"h x 13"w x 4.5"d

200 – 400

❖ 3400

Alice Kent (Pearson) Stoddard (1883 - 1976)

Pastel on paper, SLR. Colorful seated portrait of a young girl. 17.5"h x 22"w sight and 28"h x 23.5"w framed

400 – 600



❖ 3401

Louis Bosa (1905 - 1981)

Oil on board, SLL. Three cardinal-like figures riding bicycles. 14.25"h x 23.75"w and 22.5"h x 32"w framed

800 – 1200



❖ 3402

Louis Bosa (1905 - 1981)

Oil on board, "Wishful Thinking", SLL and verso. Front plate reads "Gift of the American Academy of Arts and Letters Childe Hassam Fund". Religious figures falling from sky holding parasols. 18"h x 30"w and 25.75"h x 37.5"w framed

800 – 1200



❖ 3405

Clarence Ira Dreisbach (1903 - 2001)

Oil on board, "Winter South of Lancaster, Penn, Road to Rawlinsville", SLL. Rural landscape with farmhouse and outbuildings. 24"h x 47.75"w and 31"h x 55

600 – 900



❖ 3403

Louis Bosa (1905 - 1981)

Oil on board, SLL and verso. Priest riding moped at dusk. 7.5"h x 11.5"w and 10.25"h x 14.25"w framed

400 – 600

❖ 3404

Francis Humphrey W. Woolrych (1868 - 1941)

Oil on canvas, SLL. Forest landscape in autumn. 30"h x 20"w and 35"h x 25"w framed

500 – 800



FINE ART



❖ 3406

Ben Marcune (20th c.)

Oil on board, SLL. Winter landscape with stream, in David Medairy frame. 15.5"h x 19.25"w and 20.75"h x 24.5"w framed

300 – 500



❖ 3407

Ben Marcune (20th c.)

Oil on canvas board, "Acadia II", SLR. Coastal seascape. 12"h x 16"w and 17.75"h x 21.75"w framed

600 – 900



❖ 3408

Ben Marcune (20th c.)

Oil on panel, SLL. Garden still life with gladiolas and daisies. 30"h x 24"w and 38"h x 32"w framed

300 – 500

❖ 3409

Ben Marcune (20th c.)

Oil on board, SLL. Winter landscape with a stream in David Medairy frame. 16"h x 19"w and 22"h x 25.5"w framed

500 – 800



Biography of Benjamin Fortunado Marcune, 1935 – 2018

"If you look at your life's journey through the wisdom of age, you'll see a similarity to all the things you have done. For me it's art: the art of movement when I was a dancer, the art of design when I was an engineer, the art of business when I was running companies . . . we all have a thread like that." This reflection, spoken by the artist Ben Marcune, rests on the many lives he lived during his time on this earth. He was a ballet dancer, a Korean War medic, a biomedical engineer, an inventor, a business owner, a teacher, an artist and sculptor. He was that very rare being – a true Renaissance man, who used his multiple skill sets to inform his art. He was left handed (as was Leonardo da Vinci – an artist who had enormous influence on Ben). When in his studio and at his easel, Ben often painted upside-down, one narrow section at a time. Yet, when he took his portable easel and went outdoors to paint, he was able to produce a detailed plein air landscape within an hour.

Ben Marcune has left an astonishing legacy. He earned degrees from UCLA and CalTech; he had many careers and was successful in all of them. Ben was a self described "Sunday painter" who did not transition into full time painting and sculpting until he was in his late 50s. Yet, his monumental bronze sculptures enhance numerous venues throughout the Lehigh Valley in Pennsylvania. His portraits, paintings and drawings are treasured by hundreds of individuals and institutions. Although Ben is a Fellow of the Pennsylvania Academy of Fine Art, he did not spend much time in the classroom. His mentors at the Academy thought that Ben should spend his time copying from the great masters at the Philadelphia Museum of Art. That explains how Ben became a master of so many styles and genres. Ben particularly loved the work of the Bucks County Impressionists, although he could paint in the style of any artist as well as in his own. His extraordinary work is replete with light, color, vision and perception.

3410



3414



3411



❖ 3410

Willard Gayheart (20th c.)

Pencil on paper, "Still in the Hollow", SDLR, '85. Photorealistic drawing of two men and a hound preparing a still. 22.5"h x 28.5"w sight and 30.25"h x 36.25"w framed

400 – 600

3412



❖ 3411

Louis Bosa (1905 - 1981)

Oil on board, SLR. Winter urban landscape with pedestrians and buildings. 6.5"h x 8.5" sight and 10.75"h x 12.75"w framed

400 – 600

❖ 3412

Louis Bosa (1905 - 1981)

Oil on board, SLL. Two Cardinals and a Carmelite strolling through a piazza. 11"h x 15"w sight and 15.25"h x 19.25"w framed

500 – 800

3413



❖ 3413

Louis Bosa (1905 - 1981)

Oil on canvas, "NY Street in Winter", SLR. Winter urban landscape on a blistery day. 8"h x 6"w

500 – 800

❖ 3414

Willard Gayheart (20th c.)

Pencil on paper, "Portrait of a coal miner", SDLR, 1987. Photo realistic drawing of coal miner leaving the mine. 28"h x 19.5"w sight and 38"h x 28"w framed

400 – 600

Terms & Conditions of Sale

Alderfer Auction, 501 Fairgrounds Road, Hatfield, PA 19440. 215.393.3000

Buyers must register for a bidding number by giving name, address, phone number, and identification acceptable to us. Please show your bidding number to the auctioneer after each purchase you make.

The highest bidder shall be the buyer, and if any dispute arises between two or more bidders, the auctioneer shall decide the buyer or immediately put the item up for sale again. In the event of a tie between online bidder and the floor bidder, the floor bidder will take precedence. The auctioneer's decision will be binding and final.

Some lots are offered subject to a reserve, which is a confidential minimum price below which such a lot will not be sold.

The record of sale, kept by the auctioneer and clerk, will be taken as absolute and final in all disputes.

Catalog Auctions will include a Buyer's Premium of 20% with a 3% discount if paid with cash or acceptable check. Acceptable forms of payment for all in-house purchases are cash, bank check, AmEx, Visa, MasterCard, Discover and PayPal. For online bidders, the Buyer's Premium is 25%. Discounts do not apply to online purchases regardless of the form of payment.

Items purchased may be removed once payment is made. All items purchased by in-house bidders should be removed on the day of the auction. Online buyers who wish to pick up their purchases shall not do so until the Monday following the day of the auction.

Storage fees for any items left at the Auction Center for more than two weeks following the auction date will incur storage fees at a rate of \$10.00 per lot, per week regardless of the size or value of the lot. Storage fees will begin on the 15th day regardless of payment status.

Abandoned merchandise of unpaid items still remaining at our Auction Center 30 calendar days after the auction date will be considered abandoned and will be consigned to a future auction without additional notice to the purchaser. Announcements made day of Auction take precedence over printed, electronic and verbal communication.

Absentee/Phone Bids

For those unable to attend the auction, Alderfer Auction offers the absentee and phone bid services as a convenience to our patrons.

- Everyone leaving an absentee/phone bid must be willing to leave their credit card number to assure payment of a successful bid(s) is received by the end of the next day following an auction.
- Minimum absentee bid is \$50.00. All bids will open at \$50.00.
- Phone bids will open at \$250 or half of published estimate.
- Illegible bid(s) will be disregarded.
- Applicable sales tax will be added to the sales total unless a tax-exempt number is on file in our office by the day of the auction.
- Applicable Buyer's Premium will be added to each purchase.
- All successful bid(s) requested to be shipped to the buyer will be sent by an in-house or third party shipper and billed by the shipper.
- Buyer is responsible to make shipping arrangements.

- Bids are executed in competition with the audience on an alternate basis. Due to uncertainties of bidding, a lot may sell to the audience for the same amount authorized by the absentee bid. To avoid this possibility, the absentee bidder may authorize Alderfer Auction to increase their bid by one increment by placing a (+) sign beside the bid price.
- Merchandise is to be removed from the Auction Center within two weeks following the auction.
- Alderfer Auction offers the absentee/phone bid service as a convenience to our patrons who are unable to attend the auction.
- Alderfer Auction will not be held responsible for error or failure to execute the bid.
- All items are sold as is without warranty or guarantee.

Glossary of Terms

If we say "circa" a certain date, then it was made within 25 years of that date.

Measurements are given within 1" of actual size.

If we say "no defects observed", we mean that upon visual inspection we saw no defects.

Authorship*

Name of Artist – Indicates the work, in our best judgment, is by the named artist. *There is no guarantee the work is by the named artist.

Attributed to* - In our best judgment, the work may be by the artist.

Circle of * - In our best judgment, the work may be by the artist and closely related to the artist's style.

School of * - In our best judgment, a work by a pupil or follower of the artist.

In our best judgment, a copy of the known work of the artist.

In the manner of * - This painting represents the style of the names artist but was painted at a later date; the authorship is unknown.

Signature

The signature, inscriptions and dates are transcribed in print as they appear and are located as follows:

SLL: Signed Lower Left

SLR: Signed Lower Right

SUL: Signed Upper Left

SUR: Signed Upper Right

SLC: Signed Lower Corner

SUC: Signed Upper Corner

If we state "signed" in our opinion, the signature is of the named artist.

If we state "bears signature" in our opinion, the signature might be that of the artist, but we make no guarantee that work is by the named artist.

WAF = With All Faults

For Furniture

If we say "Chippendale Mahogany Chest of Drawers," we represent that the piece was made during that period.

If we say "Chippendale Style Mahogany Chest of Drawers," we represent that the piece looks like the period mentioned, but it was crafted at a later date.

Bid Increment Table

Minimum Dollar Amount Maximum Dollar Amount
Bid Increment

from US \$0 to US \$49 US \$5

from US \$50 to US \$199 US \$10

from US \$200 to US \$499 US \$25

from US \$500 to US \$999 US \$50

from US \$1,000 to US \$1,999 US \$100

from US \$2,000 to US \$4,999 US \$250

from US \$5,000 to US \$9,999 US \$500

from US \$10,000 to US \$19,999 US \$1,000

from US \$20,000 to US \$49,999 US \$2,500

from US \$50,000 to US \$99,999 US \$5,000

from US \$100,000 to and above Auctioneer's Discretion

Variations from the bid Increment Table are at the discretion of the auctioneer.

Directions & Lodging

Free shuttle service from Lansdale Train Station available. Call Alderfer's for details. 24 hour notice required.

From PA Turnpike

Take Exit 31 "Lansdale" off 476. Left on Rt. 63 (Sumneytown Pike). Left at light (Forty Foot Rd). 3 miles to Clemens Rd. Left on Clemens Rd. Right on Fairgrounds Rd.

From Philadelphia

Rt. 309 North to Montgomeryville. Left on Rt. 463 (Cowpath Rd). 4 miles to Fairgrounds Rd. Left on Fairgrounds Rd.

From Allentown

Rt. 309 South to Souderton. Exit (Rt. 113). Right on Board Street. 3 miles to Cowpath Rd. Left on Cowpath Rd. approx. 2 miles to Fairgrounds Rd. Right on Fairgrounds Rd.

Lodging:

Holiday Inn

1750 Sumneytown Pike

Route 63 & PA Turnpike

Kulpsville, PA 19443

215.368-3800

Marriot Courtyard

1737 Sumneytown Pike

Route 63 & PA Turnpike

Lansdale, PA 19446

Joseph Ambler Inn

Bed & Breakfast

105 Horsham Road

Montgomeryville, PA 18936

215-362-7500

Absentee bids welcome and can be viewed & submitted at AlderferAuction.com

ALDERFER
AUCTION
AUCTION | APPRAISAL | DOWNSIZING | REAL ESTATE



SOLD \$8,540.00



SOLD \$401,500.00



SOLD \$39,600.00



SOLD \$132,000.00



SOLD \$40,800.00



SOLD \$120,000.00



SOLD \$10,200.00



SOLD \$22,800.00



SOLD \$28,800.00

Higher Value For Your Collections
alderferauction.com

501 Fairgrounds Rd., Hatfield, PA 19440 | 215.393.3000 | AY002260

From
FINE ART
To The
UNUSUAL
&
EVERYTHING
In between

Alderfer
APPRAISAL
Has You
Covered



Milliner's Model
Measures 15"h x 6"w



Back Cover: 3301

Inside Front Cover (Clockwise from top right): 3331, 3117, 3252, 3316, 3050, 3225, 3017



**ALDERFER
AUCTION**

AUCTION | APPRAISAL | DOWNSIZING | REAL ESTATE

501 Fairgrounds Road
Hatfield, Pennsylvania 19440
215-393-3000
AlderferAuction.com
Info@AlderferAuction.com

TWO-DAY EVENT

DAY 1

Collector's Auction

Wednesday, December 11th at 10:00AM

DAY 2

Fine & Decorative Arts Auction

Thursday, December 12th at 10:00AM

Jack Butler Yeats (1871 – 1957)
"Sea and Lake"

