



FEMA Flood Map Service Center: Search By Address

Navigation

Search

Languages

MSC Home ([/portal/](#))

MSC Search by Address
([/portal/search](#))

MSC Search All Products
([/portal/advanceSearch](#))

▼ MSC Products and Tools
([/portal/resources/productsandtools](#))

Hazus
([/portal/resources/hazus](#))

LOMC Batch Files
([/portal/resources/lomc](#))

Product Availability
([/portal/productAvailability](#))

MSC Frequently Asked
Questions (FAQs)
([/portal/resources/faq](#))

MSC Email Subscriptions
([/portal/subscriptionHome](#))

Contact MSC Help
([/portal/resources/contact](#))

Enter an address, place, or coordinates: ?

1093 County Rd 205 Giddings TX 78942

Search

Whether you are in a high risk zone or not, you may need [flood insurance \(https://www.fema.gov/national-flood-insurance-program\)](https://www.fema.gov/national-flood-insurance-program) because most homeowners insurance doesn't cover flood damage. If you live in an area with low or moderate flood risk, you are 5 times more likely to experience flood than a fire in your home over the next 30 years. For many, a National Flood Insurance Program's flood insurance policy could cost less than \$400 per year. Call your insurance agent today and protect what you've built.

Learn more about [steps you can take \(https://www.fema.gov/what-mitigation\)](https://www.fema.gov/what-mitigation) to reduce the risk flood damage.

Search Results—Products for LEE COUNTY UNINCORPORATED AREAS

Show ALL Products » (<https://msc.fema.gov/portal/availabilitySearch?addcommunity=480901&communityName=LEE C>)

The flood map for the selected area is number **48287C0365C**, effective on **04/16/2014** ?

DYNAMIC MAP



MAP IMAGE



(<https://msc.fema.gov/portal/downloadProduct?>

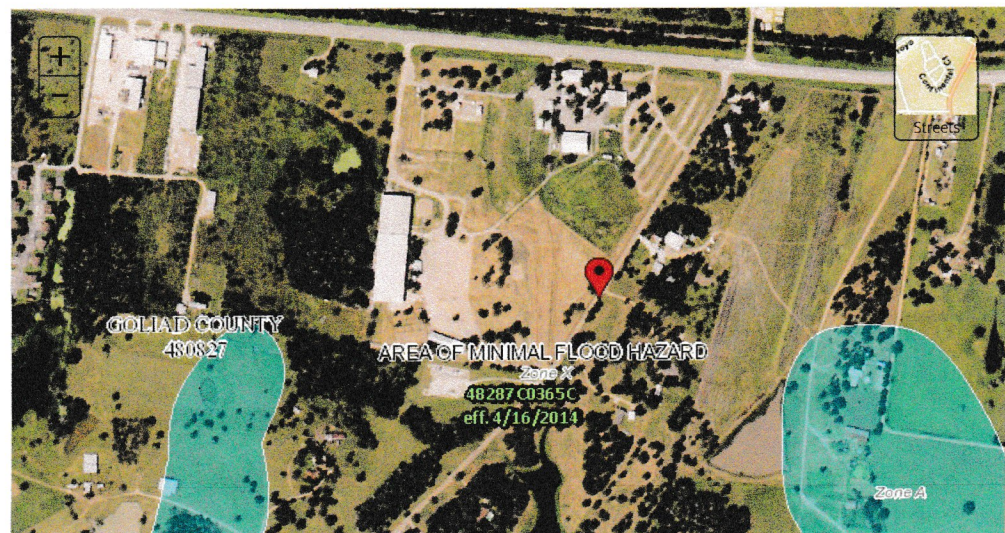
[filepath=/48/P/Firm/48287C0365C.tif&productTypeID=FINAL_PRODUCT&productSubTypeID=FIRM_PANEL&](#)

Changes to this FIRM ?

- Revisions (0)
- Amendments (0)
- Revalidations (0)

You can choose a new flood map or move the location pin by selecting a different location on the locator map below or by entering a new location in the search field above. It may take a minute or more during peak hours to generate a dynamic FIRMette.

Go To NFHL Viewer » (<https://hazards-fema.maps.arcgis.com/apps/webappviewer/index.html?id=8b0adb51996444d>)





[Share This Page.](#)

[Home \(//www.fema.gov/\)](http://www.fema.gov/) [Download Plug-ins \(//www.fema.gov/download-plug-ins\)](http://www.fema.gov/download-plug-ins) [About Us \(//www.fema.gov/about-agency\)](http://www.fema.gov/about-agency) [Privacy Policy \(//www.fema.gov/privacy-policy\)](http://www.fema.gov/privacy-policy) [FOIA \(//www.fema.gov/foia\)](http://www.fema.gov/foia) [Office of the Inspector General \(//www.oig.dhs.gov/\)](http://www.oig.dhs.gov/) [Strategic Plan \(//www.fema.gov/fema-strategic-plan\)](http://www.fema.gov/fema-strategic-plan) [Whitehouse.gov \(//www.whitehouse.gov\)](http://www.whitehouse.gov/) [DHS.gov \(//www.dhs.gov\)](http://www.dhs.gov/) [Ready.gov \(//www.ready.gov\)](http://www.ready.gov/) [USA.gov \(//www.usa.gov\)](http://www.usa.gov/) [DisasterAssistance.gov \(//www.disasterassistance.gov/\)](http://www.disasterassistance.gov/)



<https://www.oig.dhs.gov/hotline>

Official website of the Department of Homeland Security