



FEMA Flood Map Service Center: Search By Address

Navigation

Search

Languages

MSC Home (/portal/)

MSC Search by Address
(/portal/search)

MSC Search All Products
(/portal/advanceSearch)

▼ MSC Products and Tools
(/portal/resources/productsandtools)

Hazus
(/portal/resources/hazus)

LOMC Batch Files
(/portal/resources/lomc)

Product Availability
(/portal/productAvailability)

MSC Frequently Asked
Questions (FAQs)
(/portal/resources/faq)

MSC Email Subscriptions
(/portal/subscriptionHome)

Contact MSC Help
(/portal/resources/contact)

Enter an address, place, or coordinates: ?

849 Rutherford Lane Goliad TX 77963

Search

Whether you are in a high risk zone or not, you may need [flood insurance \(https://www.fema.gov/national-flood-insurance-program\)](https://www.fema.gov/national-flood-insurance-program) because most homeowners insurance doesn't cover flood damage. If you live in an area with low or moderate flood risk, you are 5 times more likely to experience flood than a fire in your home over the next 30 years. For many, a National Flood Insurance Program's flood insurance policy could cost less than \$400 per year. Call your insurance agent today and protect what you've built.

Learn more about [steps you can take \(https://www.fema.gov/what-mitigation\)](https://www.fema.gov/what-mitigation) to reduce the risk flood damage.

Search Results—Products for GOLIAD COUNTY UNINCORPORATED AREAS

Show ALL Products » (<https://msc.fema.gov/portal/availabilitySearch?addcommunity=480827&communityName=GOLIAD>)

The flood map for the selected area is number **48175C0125B**, effective on **10/19/2010** ?

DYNAMIC MAP



MAP IMAGE



(<https://msc.fema.gov/portal/downloadProduct?>

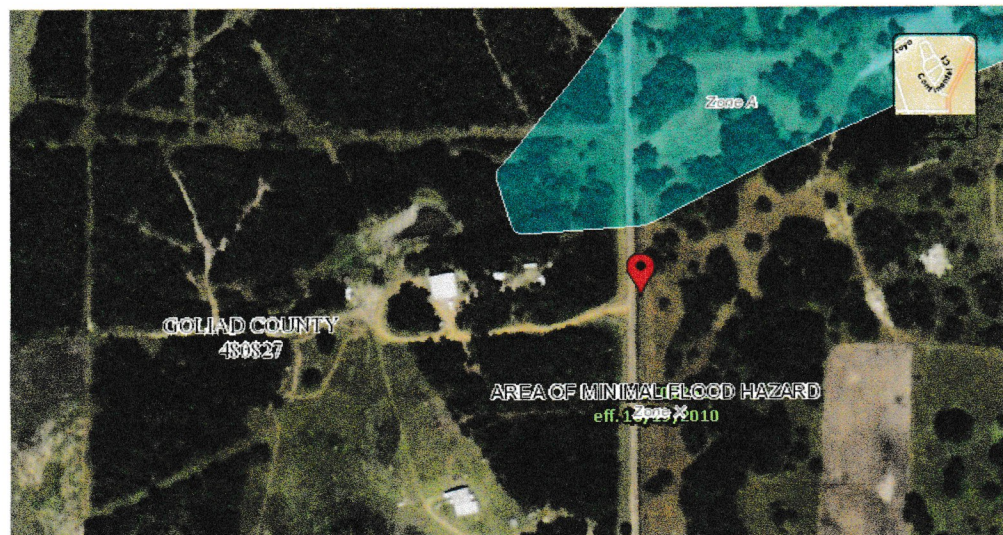
[filepath=/48/P/Firm/48175C0125B.tif&productTypeID=FINAL_PRODUCT&productSubTypeID=FIRM_PANEL&f">filepath=/48/P/Firm/48175C0125B.tif&productTypeID=FINAL_PRODUCT&productSubTypeID=FIRM_PANEL&f](#)

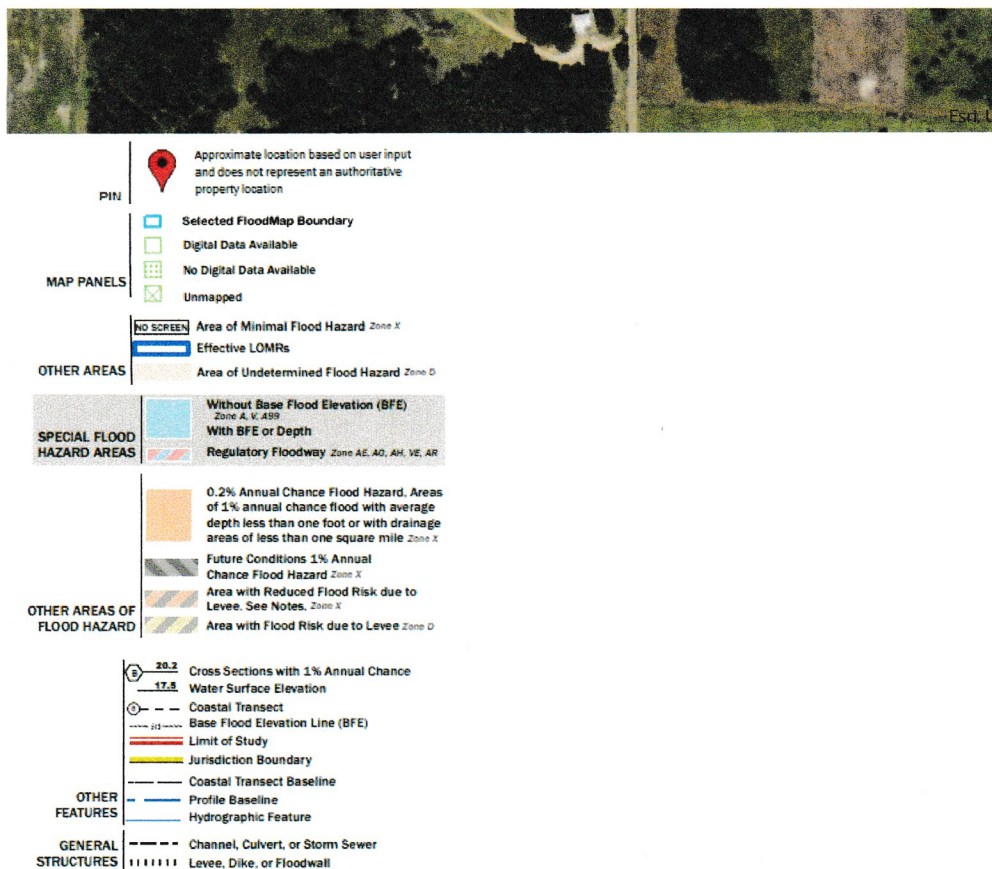
Changes to this FIRM ?

Revisions (0)
Amendments (0)
Revalidations (0)

You can choose a new flood map or move the location pin by selecting a different location on the locator map below or by entering a new location in the search field above. It may take a minute or more during peak hours to generate a dynamic FIRMette.

Go To NFHL Viewer » (<https://hazards-fema.maps.arcgis.com/apps/webappviewer/index.html?id=8b0adb51996444d>)





[Share This Page.](#)

[Home](http://www.fema.gov/) (<http://www.fema.gov/>) [Download Plug-ins](http://www.fema.gov/download-plug-ins) (<http://www.fema.gov/download-plug-ins>) [About Us](http://www.fema.gov/about-agency) (<http://www.fema.gov/about-agency>) [Privacy Policy](http://www.fema.gov/privacy-policy) (<http://www.fema.gov/privacy-policy>) [FOIA](http://www.fema.gov/foia) (<http://www.fema.gov/foia>) [Office of the Inspector General](http://www.oig.dhs.gov/) (<http://www.oig.dhs.gov/>) [Strategic Plan](http://www.fema.gov/fema-strategic-plan) (<http://www.fema.gov/fema-strategic-plan>) [Whitehouse.gov](http://www.whitehouse.gov/) (<http://www.whitehouse.gov/>) [DHS.gov](http://www.dhs.gov/) (<http://www.dhs.gov/>) [Ready.gov](http://www.ready.gov/) (<http://www.ready.gov/>) [USA.gov](http://www.usa.gov/) (<http://www.usa.gov/>) [DisasterAssistance.gov](http://www.disasterassistance.gov/) (<http://www.disasterassistance.gov/>)



(<https://www.oig.dhs.gov/hotline>)

Official website of the Department of Homeland Security