



# FEMA Flood Map Service Center: Search By Address

Navigation

Search

Languages

Enter an address, place, or coordinates: ?

411 Church Street, Brenham, TX 77833

Search

Whether you are in a high risk zone or not, you may need [flood insurance](https://www.fema.gov/national-flood-insurance-program) because most homeowners insurance doesn't cover flood damage. If you live in an area with low or moderate flood risk, you are 5 times more likely to experience flood than a fire in your home over the next 30 years. For many, a National Flood Insurance Program's flood insurance policy could cost less than \$400 per year. Call your insurance agent today and protect what you've built.

Learn more about [steps you can take](https://www.fema.gov/what-mitigation) to reduce flood risk damage.

MSC Home (/portal/)

MSC Search by Address (/portal/search)

MSC Search All Products (/portal/advanceSearch)

MSC Products and Tools (/portal/resources/productsandtools)

Hazus (/portal/resources/hazus)

LOMC Batch Files (/portal/resources/lomc)

Product Availability (/portal/productAvailability)

MSC Frequently Asked Questions (FAQs) (/portal/resources/faq)

MSC Email Subscriptions (/portal/subscriptionHome)

Contact MSC Help (/portal/resources/contact)

## Search Results—Products for BRENHAM, CITY OF

Show ALL Products » (<https://msc.fema.gov/portal/availabilitySearch?addcommunity=480648&communityName=BREN>)

The flood map for the selected area is number **48477C0295C**, effective on **08/16/2011** ?

DYNAMIC MAP



MAP IMAGE



([https://msc.fema.gov/portal/downloadProduct?](https://msc.fema.gov/portal/downloadProduct?filepath=/48/P/Firm/48477C0295C.tif&productTypeID=FINAL_PRODUCT&productSubTypeID=FIRM_PANEL&)

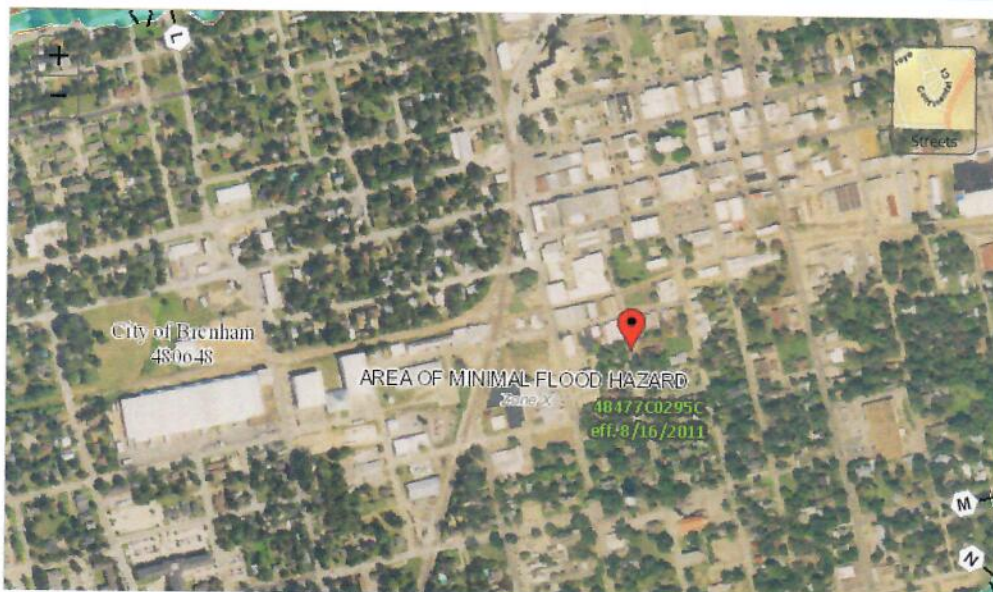
[filepath=/48/P/Firm/48477C0295C.tif&productTypeID=FINAL\\_PRODUCT&productSubTypeID=FIRM\\_PANEL&](https://msc.fema.gov/portal/downloadProduct?filepath=/48/P/Firm/48477C0295C.tif&productTypeID=FINAL_PRODUCT&productSubTypeID=FIRM_PANEL&)

Changes to this FIRM ?

- Revisions (1)
- Amendments (20)
- Revalidations (2)

You can choose a new flood map or move the location pin by selecting a different location on the locator map below or by entering a new location in the search field above. It may take a minute or more during peak hours to generate a dynamic FIRMette.

Go To NFHL Viewer » (<https://hazards-fema.maps.arcgis.com/apps/webappviewer/index.html?id=8b0adb51996444d>)





**PIN** Approximate location based on user input and does not represent an authoritative property location

**MAP PANELS**

- Selected FloodMap Boundary
- Digital Data Available
- No Digital Data Available
- Unmapped

**OTHER AREAS**

- Area of Minimal Flood Hazard Zone X
- Effective LOMRs
- Area of Undetermined Flood Hazard Zone D
- Otherwise Protected Area
- Coastal Barrier Resource System Area

**SPECIAL FLOOD HAZARD AREAS**

- Without Base Flood Elevation (BFE) Zone A, V, AP
- With BFE or Depth
- Regulatory Floodway Zone AE, AO, AH, VE, AR

**OTHER AREAS OF FLOOD HAZARD**

- 0.2% Annual Chance Flood Hazard, Areas of 1% annual chance flood with average depth less than one foot or with drainage areas of less than one square mile Zone X
- Future Conditions 1% Annual Chance Flood Hazard Zone X
- Area with Reduced Flood Risk due to Levee. See Notes. Zone X
- Area with Flood Risk due to Levee Zone D

**OTHER FEATURES**

- Cross Sections with 1% Annual Chance Water Surface Elevation
- Coastal Transect
- Base Flood Elevation Line (BFE)
- Limit of Study
- Jurisdiction Boundary
- Coastal Transect Baseline
- Profile Baseline
- Hydrographic Feature

**GENERAL STRUCTURES**

- Channel, Culvert, or Storm Sewer
- Levee, Dike, or Floodwall

Share This Page.

[Home \(//www.fema.gov/\)](http://www.fema.gov/) [Download Plug-ins \(//www.fema.gov/download-plug-ins\)](http://www.fema.gov/download-plug-ins) [About Us \(//www.fema.gov/about-agency\)](http://www.fema.gov/about-agency) [Privacy Policy \(//www.fema.gov/privacy-policy\)](http://www.fema.gov/privacy-policy) [FOIA \(//www.fema.gov/foia\)](http://www.fema.gov/foia) [Office of the Inspector General \(//www.oig.dhs.gov/\)](http://www.oig.dhs.gov/) [Strategic Plan \(//www.fema.gov/fema-strategic-plan\)](http://www.fema.gov/fema-strategic-plan) [Whitehouse.gov \(//www.whitehouse.gov\)](http://www.whitehouse.gov/) [DHS.gov \(//www.dhs.gov\)](http://www.dhs.gov/) [Ready.gov \(//www.ready.gov\)](http://www.ready.gov/) [USA.gov \(//www.usa.gov\)](http://www.usa.gov/) [DisasterAssistance.gov \(//www.disasterassistance.gov/\)](http://www.disasterassistance.gov/)

**OIG HOTLINE**  
 Report Fraud, Waste & Abuse  [\(https://www.oig.dhs.gov/hotline\)](https://www.oig.dhs.gov/hotline)

Official website of the Department of Homeland Security