



(//www.fema.gov/)

# FEMA Flood Map Service Center: Search By Address

Enter an address, place, or coordinates: ?

117 STONE HILL DR, BRENHAM, TX 77833

Search

Whether you are in a high risk zone or not, you may need [flood insurance](https://www.fema.gov/national-flood-insurance-program) because most homeowners insurance doesn't cover flood damage. If you live in an area with low or moderate flood risk, you are 5 times more likely to experience flood than a fire in your home over the next 30 years. For many, a National Flood Insurance Program's flood insurance policy could cost less than \$400 per year. Call your insurance agent today and protect what you've built.

Learn more about [steps you can take](https://www.fema.gov/what-mitigation) to reduce flood risk damage.

Navigation

Search

Languages

MSC Home (/portal/)

MSC Search by Address (/portal/search)

MSC Search All Products (/portal/advanceSearch)

MSC Products and Tools (/portal/resources/productsandtools)

Hazus (/portal/resources/hazus)

LOMC Batch Files (/portal/resources/lomc)

Product Availability (/portal/productAvailability)

MSC Frequently Asked Questions (FAQs) (/portal/resources/faq)

MSC Email Subscriptions (/portal/subscriptionHome)

Contact MSC Help (/portal/resources/contact)

## Search Results—Products for BRENHAM, CITY OF

Show ALL Products » (<https://msc.fema.gov/portal/availabilitySearch?addcommunity=480648&communityName=BRENHAM,CITY>)

The flood map for the selected area is number **48477C0295C**, effective on **08/16/2011**

### DYNAMIC MAP



PRINT MAP / FIRMette

### MAP IMAGE



DOWNLOAD FIRM PANEL

(<https://msc.fema.gov/portal/downloadProduct?>

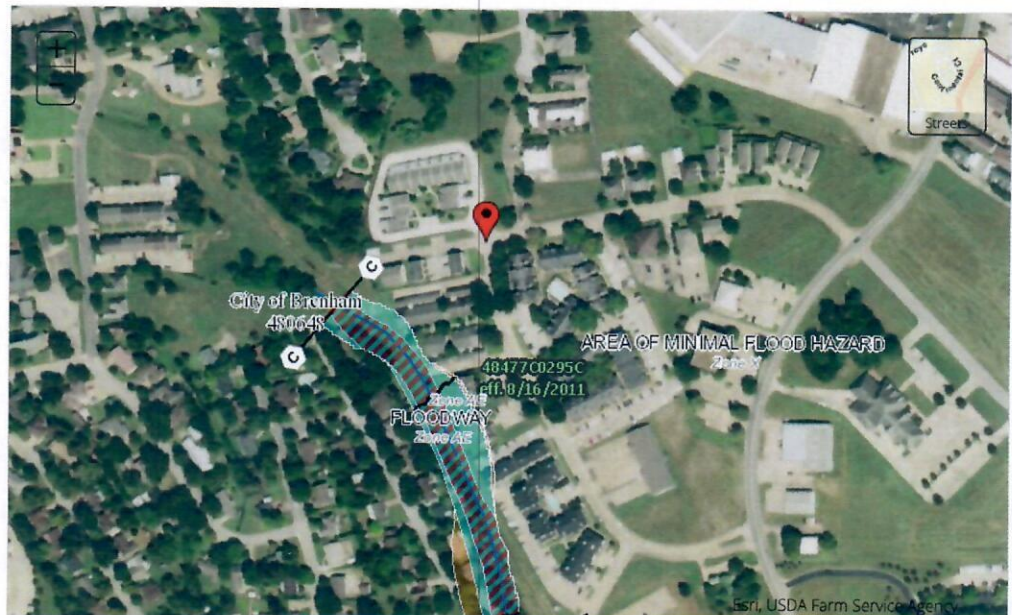
[filepath=/48/P/Firm/48477C0295C.tif&productTypeID=FINAL\\_PRODUCT&productSubTypeID=FIRM\\_PANEL&productID](https://msc.fema.gov/portal/downloadProduct?filepath=/48/P/Firm/48477C0295C.tif&productTypeID=FINAL_PRODUCT&productSubTypeID=FIRM_PANEL&productID)

### Changes to this FIRM ?

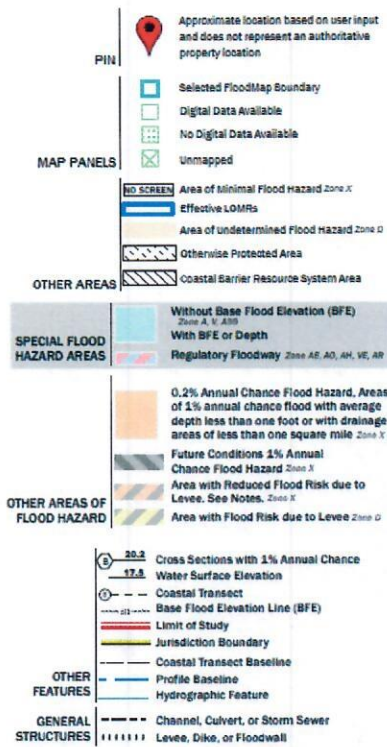
- Revisions (1)
- Amendments (24)
- Revalidations (2)

You can choose a new flood map or move the location pin by selecting a different location on the locator map below or by entering a new location in the search field above. It may take a minute or more during peak hours to generate a dynamic FIRMette. If you are a person with a disability, are blind, or have low vision, and need assistance, please contact a map specialist (<https://msc.fema.gov/portal/resources/contact>).

Go To NFHL Viewer » (<https://hazards-fema.maps.arcgis.com/apps/webappviewer/index.html?id=8b0adb51996444d4879338b>)



Esri, USDA Farm Service Agency



Share This Page.

[Home \(//www.fema.gov/\)](http://www.fema.gov/)
[Download Plug-ins \(//www.fema.gov/download-plug-ins\)](http://www.fema.gov/download-plug-ins)
[About Us \(//www.fema.gov/about-agency\)](#)
[Privacy Policy \(//www.fema.gov/privacy-policy\)](http://www.fema.gov/privacy-policy)
[FOIA \(//www.fema.gov/foia\)](http://www.fema.gov/foia)  
[Office of the Inspector General \(//www.oig.dhs.gov/\)](http://www.oig.dhs.gov/)
[Strategic Plan \(//www.fema.gov/fema-strategic-plan\)](http://www.fema.gov/fema-strategic-plan)  
[Whitehouse.gov \(//www.whitehouse.gov\)](http://www.whitehouse.gov/)
[DHS.gov \(//www.dhs.gov\)](http://www.dhs.gov/)
[Ready.gov \(//www.ready.gov\)](http://www.ready.gov/)
[USA.gov \(//www.usa.gov\)](http://www.usa.gov/)
[DisasterAssistance.gov \(//www.disasterassistance.gov/\)](http://www.disasterassistance.gov/)



(<https://www.oig.dhs.gov/hotline>)

Official website of the Department of Homeland Security