

FEMA Flood Map Service Center: Search By Address

Navigation

Search

Languages

MSC Home (/portal/)

MSC Search by Address (/portal/search)

MSC Search All Products (/portal/advanceSearch)

▼ MSC Products and Tools (/portal/resources/productsandtools)

Hazus (/portal/resources/hazus)

LOMC Batch Files (/portal/resources/lomc)

Product Availability (/portal/productAvailability)

MSC Frequently Asked Questions (FAQs) (/portal/resources/faq)

MSC Email Subscriptions (/portal/subscriptionHome)

Contact MSC Help (/portal/resources/contact)

Enter an address, place, or coordinates: ?

501 Pecan Ln. Somerville TX

Search

Whether you are in a high risk zone or not, you may need [flood insurance \(https://www.fema.gov/national-flood-insurance-program\)](https://www.fema.gov/national-flood-insurance-program) because most homeowners insurance doesn't cover flood damage. If you live in an area with low or moderate flood risk, you are 5 times more likely to experience flood than a fire in your home over the next 30 years. For many, a National Flood Insurance Program's flood insurance policy could cost less than \$400 per year. Call your insurance agent today and protect what you've built.

Learn more about [steps you can take \(https://www.fema.gov/what-mitigation\)](https://www.fema.gov/what-mitigation) to reduce flood risk damage.

Search Results—Products for **BURLESON COUNTY UNINCORPORATED AREAS**

Show ALL Products » (<https://msc.fema.gov/portal/availabilitySearch?addcommunity=481169&communityName=BURLESON>)

The flood map for the selected area is number **48051C0425C**, effective on **01/06/2011** ?

DYNAMIC MAP



MAP IMAGE



(<https://msc.fema.gov/portal/downloadProduct?>

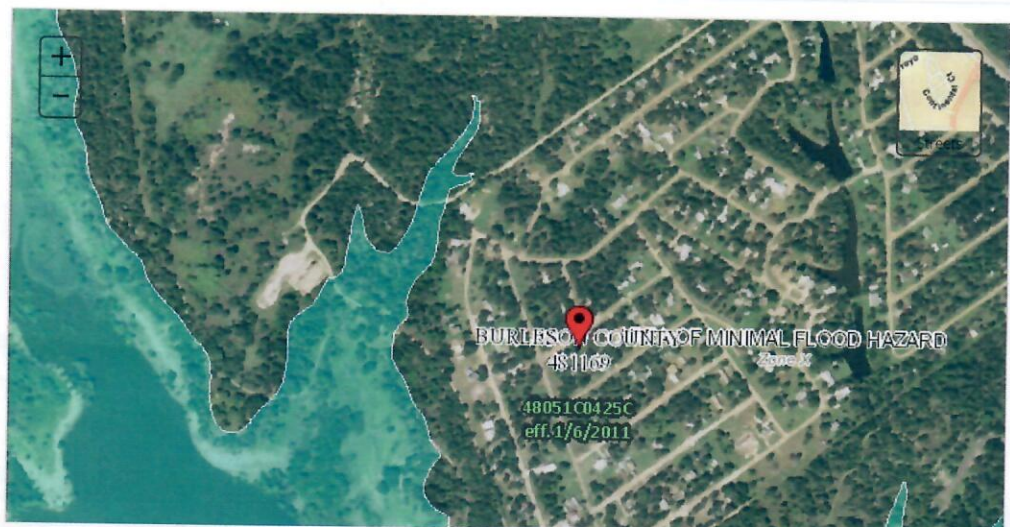
[filepath=/48/P/Firm/48051C0425C.tif&productTypeID=FINAL_PRODUCT&productSubTypeID=FIRM_PANEL&](https://msc.fema.gov/portal/downloadProduct?filepath=/48/P/Firm/48051C0425C.tif&productTypeID=FINAL_PRODUCT&productSubTypeID=FIRM_PANEL&)

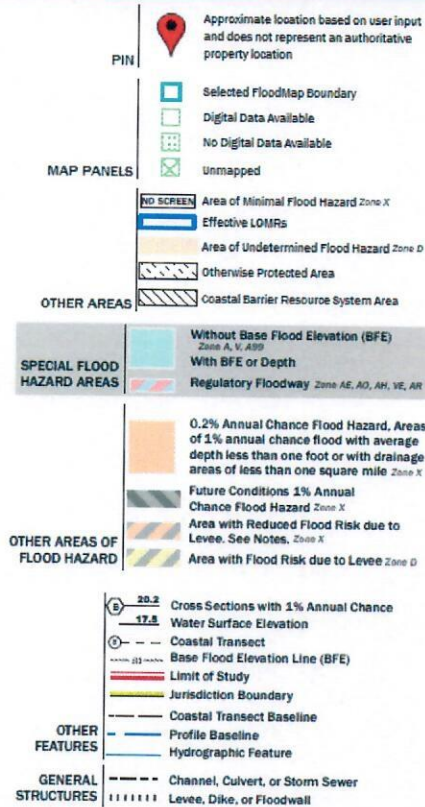
Changes to this FIRM ?

- Revisions (0)
- Amendments (0)
- Revalidations (0)

You can choose a new flood map or move the location pin by selecting a different location on the locator map below or by entering a new location in the search field above. It may take a minute or more during peak hours to generate a dynamic FIRMette. If you are a person with a disability, are blind, or have low vision, and need assistance, please contact a map specialist (<https://msc.fema.gov/portal/resources/contact>).

Go To NFHL Viewer » (<https://hazards-fema.maps.arcgis.com/apps/webappviewer/index.html?id=8b0adb51996444d>)





[Share This Page.](#)

[Home](http://www.fema.gov/)
[Download Plug-ins](http://www.fema.gov/download-plug-ins/)
[About Us](http://www.fema.gov/about-agency/)
[Privacy Policy](http://www.fema.gov/privacy-policy/)
[FOIA](http://www.fema.gov/foia/)
[Office of the Inspector General](http://www.oig.dhs.gov/)
[Strategic Plan](http://www.fema.gov/fema-strategic-plan/)
[Whitehouse.gov](http://www.whitehouse.gov/)
[DHS.gov](http://www.dhs.gov/)
[Ready.gov](http://www.ready.gov/)
[USA.gov](http://www.usa.gov/)
[DisasterAssistance.gov](http://www.disasterassistance.gov/)

OIG HOTLINE
 Report Fraud, Waste & Abuse
<https://www.oig.dhs.gov/hotline>

Official website of the Department of Homeland Security