

11 COMMERCIAL BUILDING SITES FOR SALE

Location:
Roanoke Rapids, NC

Directions:

From Exit 171 on I-95, go northwest on Rt. 125 (Old Farm Rd.) for 1.6 miles. Turn west onto Gregory Dr. Watch for the tract signs.



Less than 2 miles to I-95

11 excellent commercial building sites in a prime location. The tracts are located in an established Medical Park/Commercial subdivision. Current neighbors are various medical practices, veterinarian, fitness center, law offices, and a fire station to name a few. Most of these tracts are adjacent to the Halifax Regional Medical Center. Public water and sewer are available.

Tract 1: Lot 4A, Lot 4B and Lot 4C - 2.117 acres - \$89,000.00

Tract 2: Lot 5B - 0.670 acres - **SOLD**

Tract 3: Lot 19F - 0.863 - \$19,000.00

Tract 4: Lot 20 and Lot 21C - 3.399 acres - \$69,000.00

Tract 5: Lot 21B Lot 21A - 1.996 acres - \$69,000.00

Tract 6: Lot 22B and Lot 22A - 2.262 acres - \$69,000.00

Tract 7: Lot 23B and Lot 23A - 2.414 acres - \$69,000.00

Tract 8: Lot 24C and lot 24B - 2.895 - \$30,000.00

Tract 9: Lot 24A and Lot 25E - 3.909 acres - \$30,000.00

Tract 10: Lot 25D and Lot 25C - 4.696 acres - \$45,000.00

Tract 11: Lot 25B and Lot 25A - 4.631 acres - \$30,000.00



Sale Manager: **Pete Ramsey 434.258.6611**

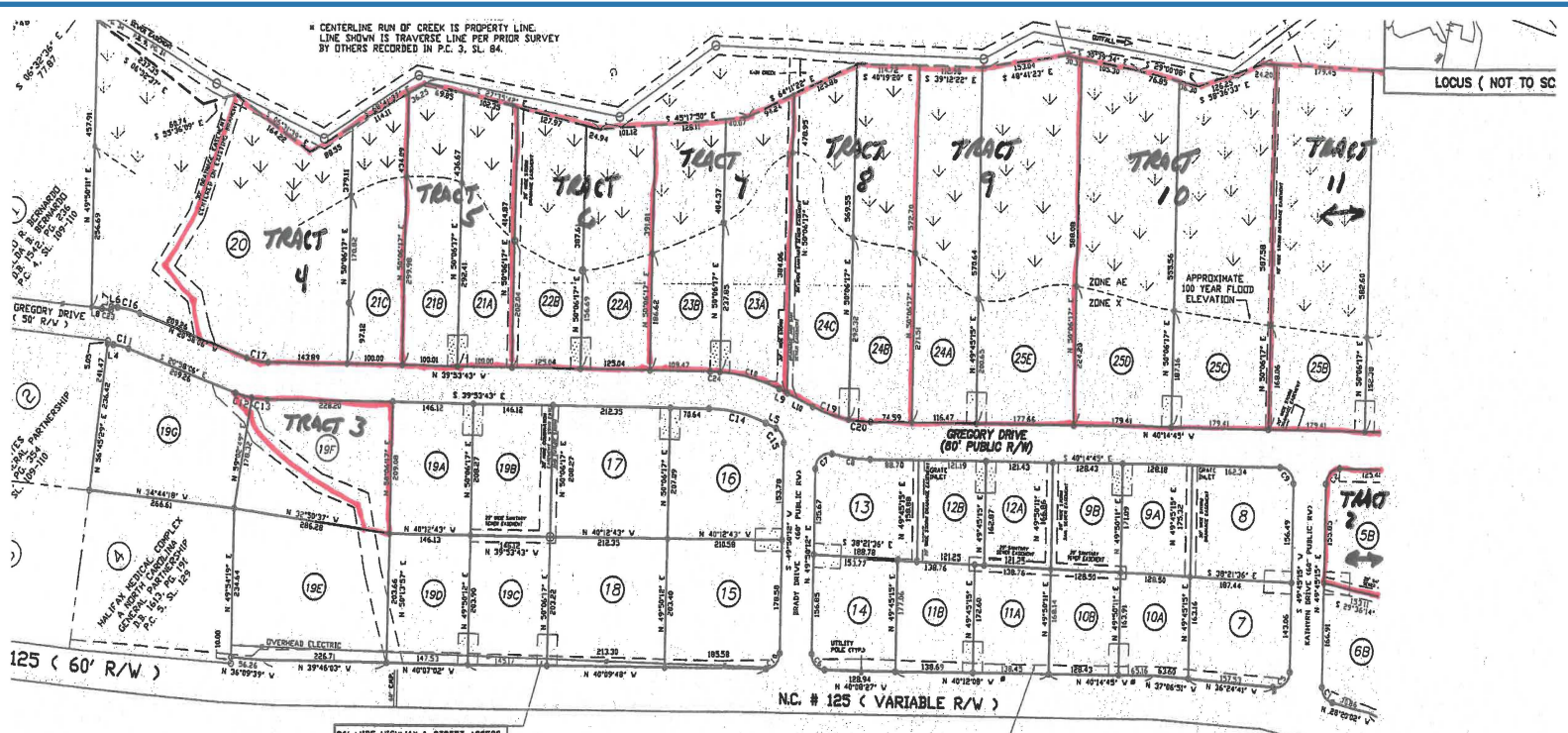


www.countsauction.com

800-780-2991

NC14344 In cooperation with Modhomes Realty & Auctionfirst, LLC NC221277





TABLE

TYPE	DISTANCE
P	37.40
F	84.71
V	16.82
P	10.38
E	18.54
P	11.07
V	15.28
F	11.23
E	16.97
E	18.42

36' WIDE HIGHWAY & STREET ACCESS
EASEMENTS CENTERED ON
PROPERTY LINE AND 50' LONG. (TYP)

30' WIDE UTILITY EASEMENT
ROANOKE RAPIDS SANITARY DISTRICT
D.B. 1918, PG. 271
P.C. 6, SL. 44-D

ROANOKE LAND DEVELOPMENT, LLC
D.B. 1991, PG. 325

TABLE

LINE	ARC LENGTH	CHORD LENGTH
19	34.07	31.30
20	29.27	26.36
21	25.82	23.59
22	17.82	17.82
23	44.47	29.87
24	29.27	27.26
25	44.54	28.68
26	17.82	17.82
27	29.27	26.36
28	29.27	26.36
29	17.82	17.82
30	21.15	21.11
31	28.11	24.88
32	109.75	107.64
33	87.18	87.25
34	14.28	14.88
35	108.64	108.22

AREA SUMMARY±

NAME	SQ. FT.	ACRES	NAME	SQ. FT.	ACRES
4A	13689	0.773	19E	62822	1.425
4B	29295	0.673	19F	52050	1.195
4C	29241	0.671	19G	56399	1.295
5A	25595	0.771	20	182946	4.200
5B	29295	0.673	21A	42377	0.977
6A	32430	0.744	21B	44375	1.019
6B	28657	0.658	21C	40660	0.933
7	31015	0.712	22A	48345	1.110
8	32288	0.744	22B	50169	1.152
9A	22222	0.510	22C	54415	1.249
9B	21702	0.498	23B	50746	1.165
10A	20909	0.480	24A	65580	1.506
10B	21223	0.490	24B	65551	1.507
11A	23608	0.542	24C	60474	1.398
11B	24247	0.557	25A	52750	1.221
12A	20000	0.459	25B	104969	2.410
12B	19496	0.448	25C	101859	2.338
13	29652	0.681	25D	102705	2.358
14	27468	0.631	25E	104675	2.403
15	25716	0.581	25F		

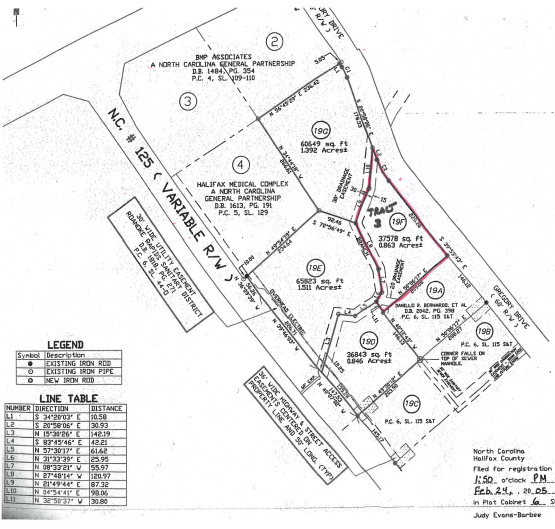
LEGEND

Symbol	Description
○	EXISTING IRON PIPE
○	NEW IRON PIPE
○	STORM DRAIN INLET
▽	GRID MONUMENT
◆	N.C.D.O.T. R/W MONUMENT
◆	EXISTING P/W MONUMENT
○	EXISTING IRON ROD
○	SANITARY SEWER MANHOLE

MATCH

REVISIONS

NO.	DATE	DESCRIPTION



State of North Carolina
County of Halifax

I, Jonathan C. Vickers, Civil Engineer, do hereby certify that the above and foregoing plat was prepared by me or under my direct supervision and that I am a duly licensed Professional Engineer in the State of North Carolina.

Witness my hand and seal this 24th day of February, 2025.

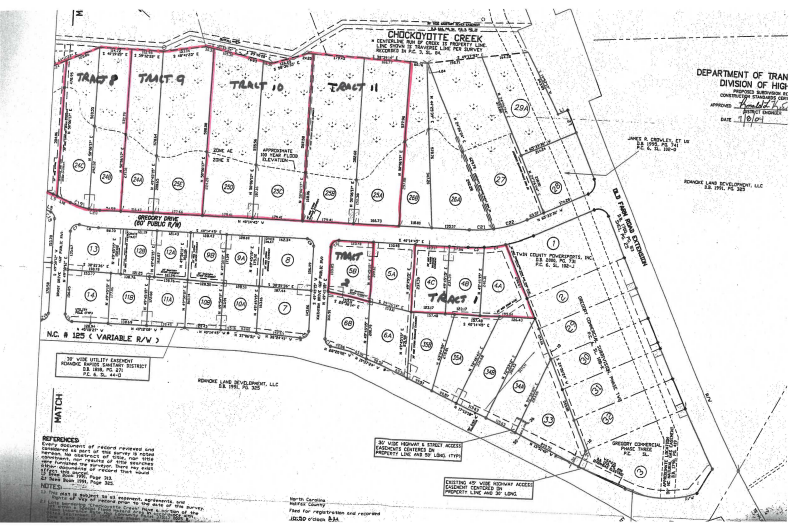
Jonathan C. Vickers
Professional Engineer

State of North Carolina
County of Halifax

I, Kelly L. Lister, County Clerk, do hereby certify that this plat was recorded in the Public Records Office of Halifax County, North Carolina, on this 24th day of February, 2025.

Kelly L. Lister
County Clerk

North Carolina
Halifax County
Filed for registration and recording
Feb. 24, 2025, 2:05 PM
in Plat Cabinet 46, Sheet 450-F
July Evans-Burke



Sale Managers : **Pete Ramsey 434.258.6611**
www.countsauction.com
800-780-2991