

CORNER A TO CORNER B:

S. 07°04'40" E.	120.64'
S. 49°27'00" E.	43.17'
S. 36°20'00" E.	92.85'
S. 23°08'00" E.	78.91'
S. 19°08'30" E.	113.04'

CORNER B TO CORNER C:

S. 19°08'30" E.	74.90'
S. 13°28'00" E.	18.00'
S. 07°04'40" E.	48.00'
S. 02°02'00" E.	42.78'
S. 12°23'00" E.	61.27'
S. 68°58'00" E.	48.00'

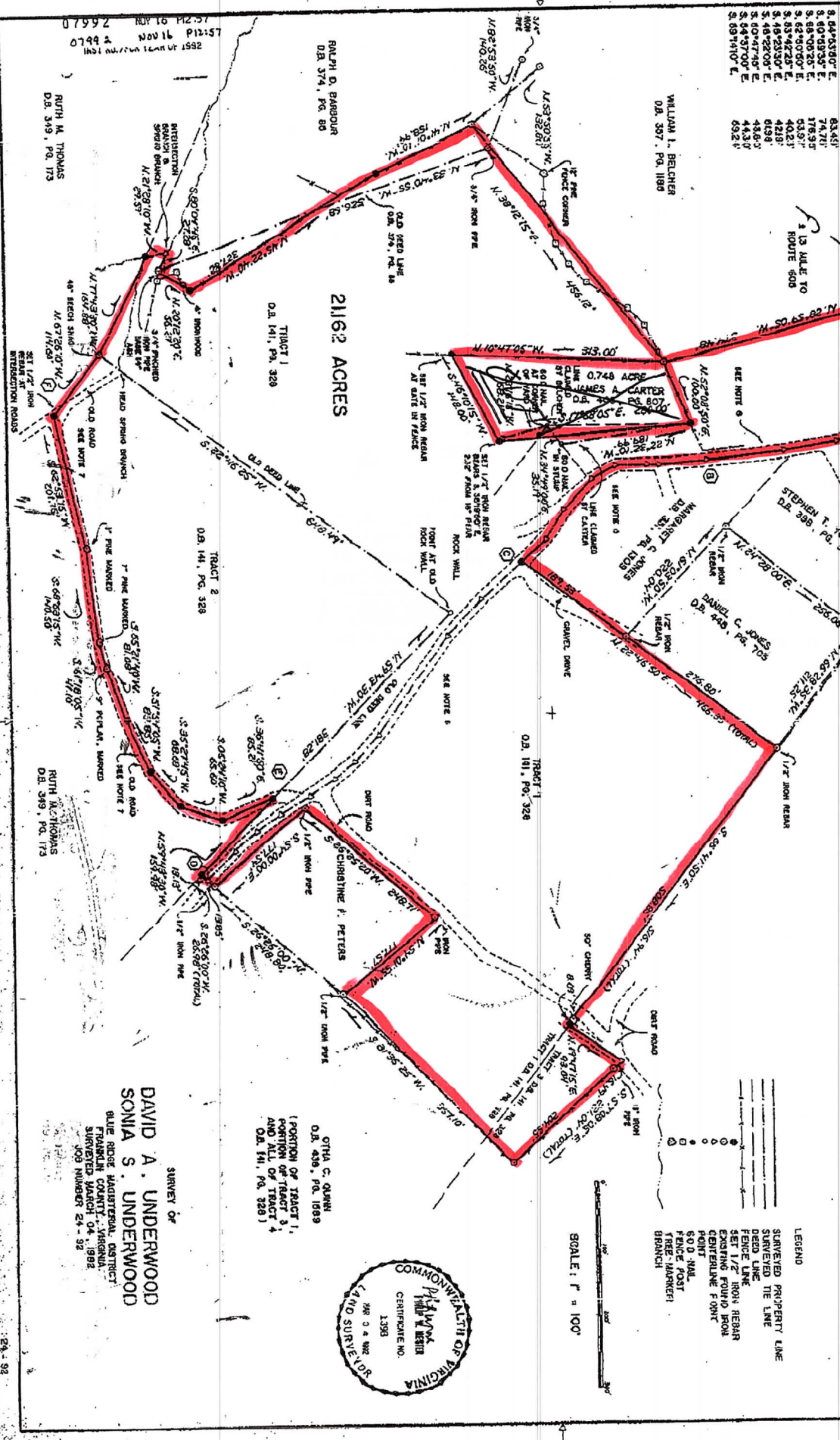
CORNER C TO CORNER D:

S. 04°03'00" E.	63.41'
S. 03°03'30" E.	73.51'
S. 03°02'00" E.	178.35'
S. 03°42'30" E.	53.97'
S. 48°23'00" E.	40.23'
S. 48°22'00" E.	42.91'
S. 00°47'00" E.	61.91'
S. 00°47'00" E.	44.33'
S. 04°17'00" E.	44.33'
S. 09°14'00" E.	63.24'

CORNER D TO CORNER A:

S. 07°04'40" E.	120.64'
S. 49°27'00" E.	43.17'
S. 36°20'00" E.	92.85'
S. 23°08'00" E.	78.91'
S. 19°08'30" E.	113.04'

- NOTES
- LEGAL REFERENCE: DEED BOOK 448, PAGE 857
 - TAX REFERENCE: 100-00 - 036
 - PROPERTY LOCATED IN HAD FLOOD HAZARD ZONE C.
 - SURVEY PERFORMED WITHOUT BENEFIT OF A TITLE REPORT AND MAY NOT INCLUDE ALL ENCUMBRANCES ON THE PROPERTY.
 - CHORD BEARINGS & DISTANCES, PROPERTY LINE FOLLOWS CENTERLINE OF EXISTING DRIVE AND 20' R/W FROM CORNER A TO CORNER B TO CORNER C.
 - CHORD BEARINGS & DISTANCES, CENTERLINE 20' R/W FOLLOWS CENTERLINE OF EXISTING DRIVE FROM CORNER C TO CORNER D.
 - CHORD BEARINGS & DISTANCES, PROPERTY LINE FOLLOWS CENTERLINE OF OLD ROAD FROM CORNER E TO CORNER F.
 - PROPERTY LINES ARE SUBJECT TO AGREEMENT WITH ADJOINERS.



LEGEND

- SURVEYED PROPERTY LINE
- SURVEYED TIE LINE
- DEED LINE
- FENCE LINE
- SET 1/2" IRON REAR
- EXISTING FOUND FROM
- CENTERLINE POINT
- 5.0 D. NAIL
- FENCE POST
- TRIP MARKER
- BRANCH

SCALE: 1" = 100'



OTHA C. QUINN
O.S. 438, P.O. 10899

DAVID A. UNDERWOOD
SONIA S. UNDERWOOD

BLUE RIDGE MANAGEMENT DISTRICT
FISHERS COUNTY, VIRGINIA
SURVEYED MARCH 04, 1982
JOB NUMBERS 24-92

PHILIP W. NESTER, INC. P.O. BOX 827 ROCKY MOUNT, VIRGINIA 24161