

ABSOLUTE REAL ESTATE AUCTION

Prime 2± Acre Agricultural Site

NW Corner of SR 7 / US 441 and 92nd Place S
Boynton Beach, Palm Beach County, Florida 33472



Exclusively Presented By:



Online Auction: May 6-8, 2019

Fisher Auction Company and EXP Realty are pleased to present via Online Absolute Auction a 2± Acre Prime Agricultural Site at the NW Corner of SR 7 / US 441 and 92nd Place in Boynton Beach, Florida



Table of Contents

Executive Summary	3
Plat / Location Maps	6
Aerial Photographs	11

DISCLAIMER AND CONFIDENTIALITY

THIS AUCTION PROPERTY PACKAGE HAS BEEN PREPARED SOLELY FOR INFORMATION PURPOSES TO ASSIST A POTENTIAL BIDDER IN DETERMINING WHETHER IT WISHES TO PROCEED WITH AN IN-DEPTH INVESTIGATION OF THE PROPERTY. THE SELLER AND ITS AGENTS, FISHER AUCTION COMPANY AND SLC COMMERCIAL, SPECIFICALLY DISCLAIM ANY REPRESENTATION OR WARRANTY, EXPRESS OR IMPLIED, AS TO THE ACCURACY OR COMPLETENESS OF THIS PROPERTY INFORMATION PACKAGE OR OF ANY OF ITS CONTENTS. ALL FINANCIAL INFORMATION IS PROVIDED FOR GENERAL REFERENCE PURPOSES ONLY. THE PROPERTY IS BEING SOLD IN "AS IS," "WHERE IS" CONDITION AS OF THE DATE OF THE CLOSING THEREON. THE SELLER WILL MAKE NO AGREEMENT TO ALTER, REPAIR OR IMPROVE THE PROPERTY. THE SELLER, ITS AGENTS, FISHER AUCTION COMPANY AND SLC COMMERCIAL DISCLAIM ANY WARRANTY, GUARANTY OR REPRESENTATION, ORAL OR WRITTEN, PAST OR PRESENT, EXPRESS OR IMPLIED CONCERNING THE PROPERTY DISCUSSED IN THIS PROPERTY INFORMATION PACKAGE. THE SELLER, ITS AGENTS, FISHER AUCTION COMPANY AND SLC COMMERCIAL HAVE ONLY LIMITED KNOWLEDGE OF THE CONDITION OF THE PROPERTY. THE PURCHASE OF THE PROPERTY WILL BE BASED SOLELY ON A BUYER'S OWN INDEPENDENT INVESTIGATION AND FINDINGS AND NOT IN RELIANCE ON ANY INFORMATION PROVIDED BY THE SELLER, ITS AGENTS, FISHER AUCTION COMPANY AND SLC COMMERCIAL.

Lead Broker:
Robenson Juste
772.971.2431
rjusterealtor@gmail.com

Real Estate Auction Consultant:
Francis D. Santos
954.931.0644
francis@fisherauction.com

EXECUTIVE SUMMARY



OVERVIEW

Fisher Auction Company and EXP Realty are pleased to present via Absolute Online Auction a 2± Acre Prime Agricultural Site at the NW Corner of SR 7 / US 441 and 92nd Place S in Boynton Beach, Florida

Property Highlights

- Large 2± Acre Site suitable for Agricultural Uses
- Prime Location just ¾ Mile North of Boynton Beach Boulevard
- Perfect for Nursery or Ag Related Business
- Frontage includes 308± Feet along SR 7 / SR 441 and 283± Feet along 92nd Place S
- Adjacent to County Line Feed & Supply to the South
- Located on Major Corridor with Commercial, Retail and Residential Development
- Well Water and Electric Available Onsite
- Zoned AGR-PUD- Agricultural Reserve
- Close Proximity to Bethesda Hospital and Canyon Town Center

Disclaimer; the information above has been obtained from sources deemed reliable. While we do not doubt the accuracy, we have not verified it and make no guarantee, warranty or representation about it. Any projections, opinions, assumptions or estimates used are for example only and do not present the current or future performance of the property. It is your responsibility to independently verify the accuracy and completeness of the information.

EXECUTIVE SUMMARY

PROPERTY DETAILS

Address: NW Corner of SR 7 / US 441 and 92nd Place S, Boynton Beach, Florida 33472

Size: 2± Acres / 87,164± Square Feet

Access: Access from 92nd Place S at SR 7 / US 441

Zoning: AGR-PUD- Agricultural Reserve

Utilities: Well Water and Electric Onsite

2018 Taxes: \$1,694.00

Folios: 00-41-45-24-02-001-0020

Legal Description: CANYON LAKES PRESERVE AREA NO 4 S 307.85 FT OF E 283 FT OF TR A K/A PRESERVE TR

Flood Zone: Zone AE– Per Palm Beach County Flood Zone Map

Directions: From I-95 or Florida turnpike go West on Boynton Beach Boulevard to SR 7 / US 441. Turn right(North) and proceed ¾ Mile to 92nd Place S. Turn left to property

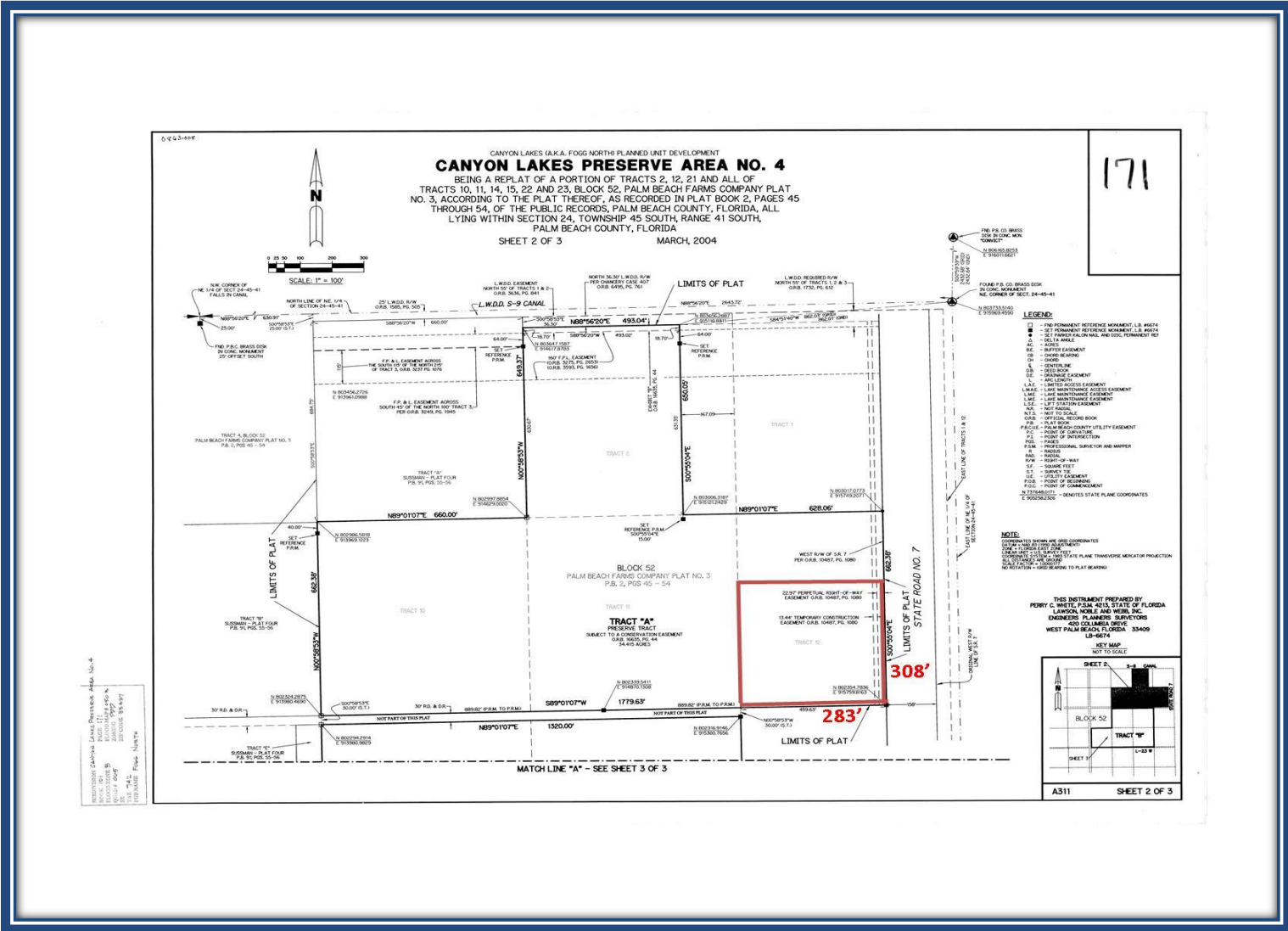
AUCTION DETAILS

Auction Method:	ABSOLUTE WITH NO RESERVE plus a 10% Buyer's Premium
Auction Begins: Auction Ends:	Monday, May 6, 2019 @ 10:00 AM ET Wednesday, May 8 @ 1:00 PM ET
Auction Location:	Online. Visit fisherauction.com for Online Bidding Registration
Qualifying Bidder Requirements:	A Bidder must show Proof of Deposit Funds in an amount not less than \$25,000.00 in order to qualify to bid. The Proof of Funds must be sent to info@fisherauction.com or faxed to 954.782.8143. Additionally, a Bidder must register online with a valid credit card in which a \$5,000.00 pre-authorization hold will be placed on the card for the Auction.
Broker Participation:	2% of the Final Bid Price. Call 800.331.6620 or visit www.fisherauction.com for the Mandatory Real Estate Buyer Broker Participation Registration Form

Disclaimer; the information above has been obtained from sources deemed reliable. While we do not doubt the accuracy, we have not verified it and make no guarantee, warranty or representation about it. Any projections, opinions, assumptions or estimates used are for example only and do not present the current or future performance of the property. It is your responsibility to independently verify the accuracy and completeness of the information.

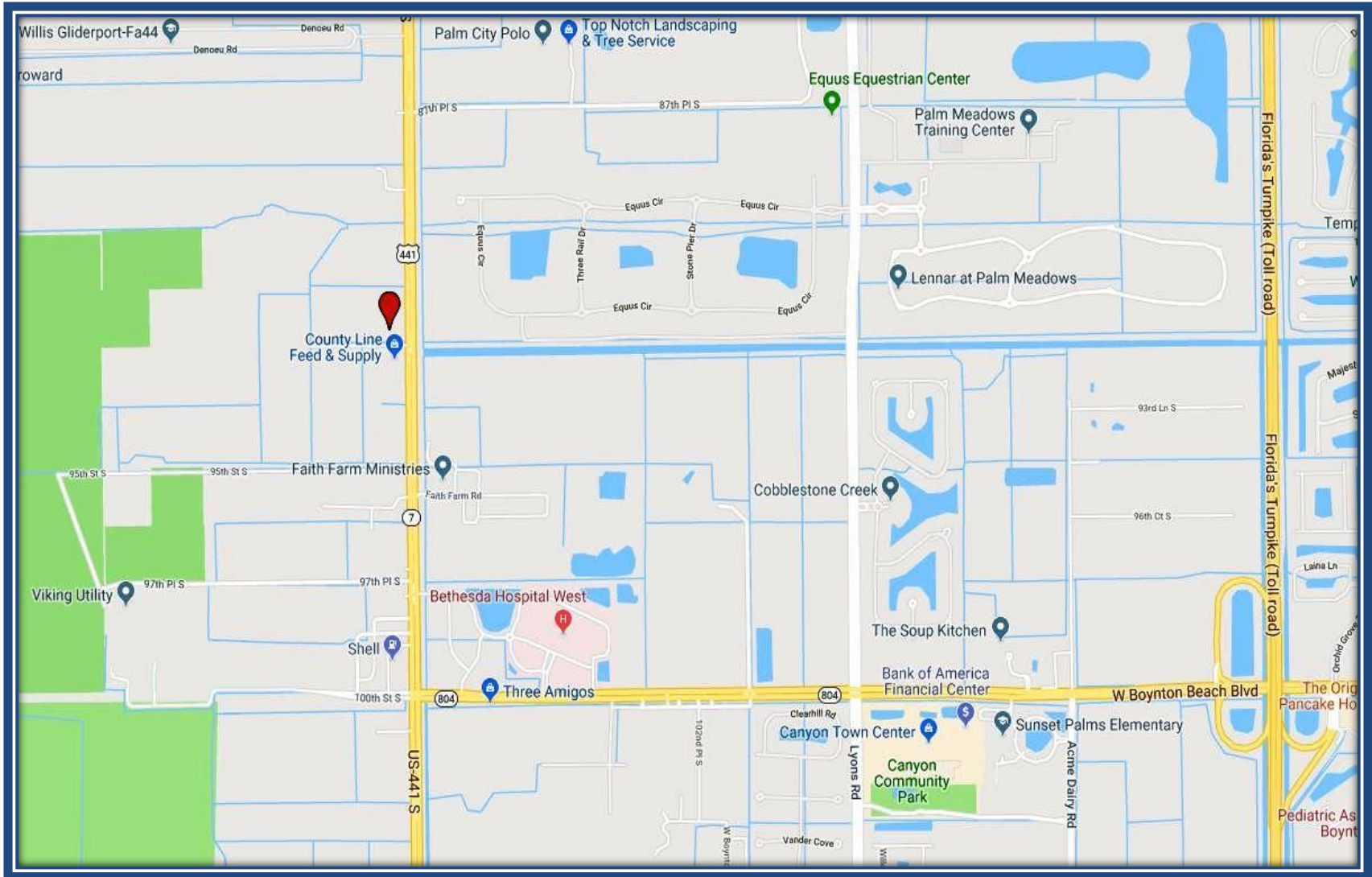
PLAT / LOCATION MAPS





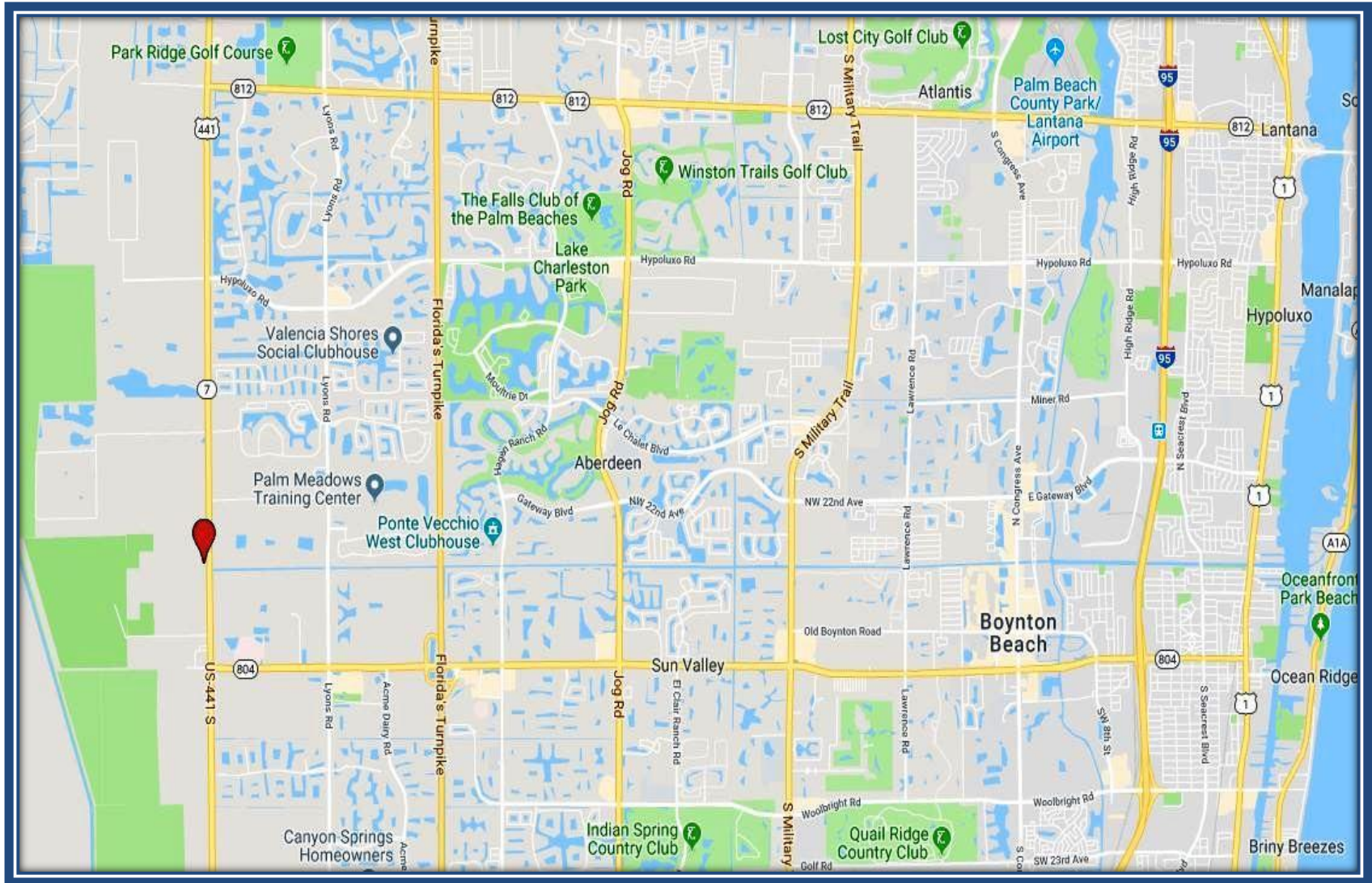
Disclaimer; the information above has been obtained from sources deemed reliable. While we do not doubt the accuracy, we have not verified it and make no guarantee, warranty or representation about it. Any projections, opinions, or estimates used are for example only and do not present the current or future performance of the property. It is your responsibility to independently verify the accuracy and completeness of the information.

LOCATION MAPS



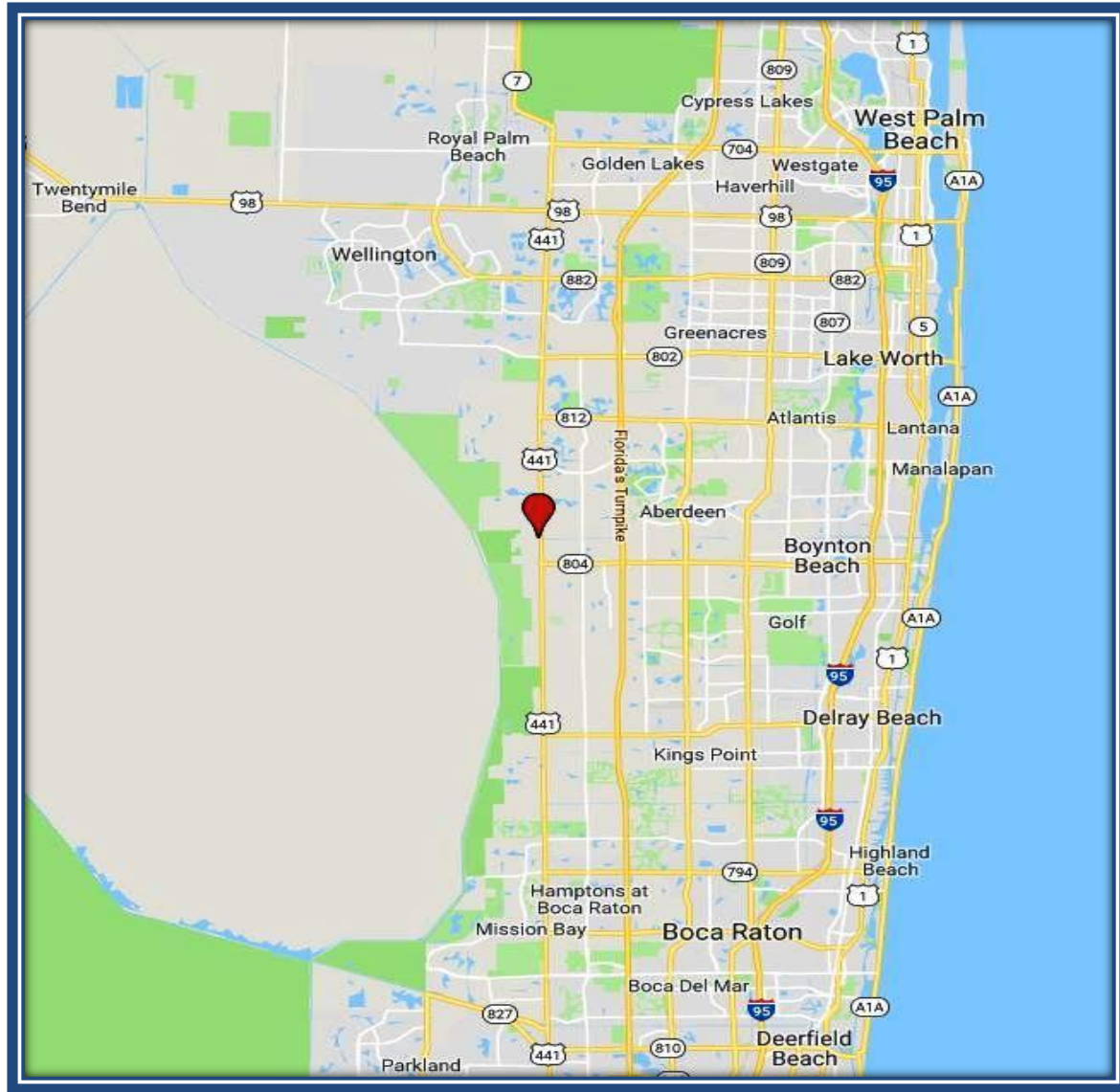
Disclaimer: the information above has been obtained from sources deemed reliable. While we do not doubt the accuracy, we have not verified it and make no guarantee, warranty or representation about it. Any projections, opinions, assumptions or estimates used are for example only and do not present the current or future performance of the property. It is your responsibility to independently verify the accuracy and completeness of the information.

LOCATION MAPS



Disclaimer; the information above has been obtained from sources deemed reliable. While we do not doubt the accuracy, we have not verified it and make no guarantee, warranty or representation about it. Any projections, opinions, assumptions or estimates used are for example only and do not present the current or future performance of the property. It is your responsibility to independently verify the accuracy and completeness of the information.

LOCATION MAPS



Disclaimer; the information above has been obtained from sources deemed reliable. While we do not doubt the accuracy, we have not verified it and make no guarantee, warranty or representation about it. Any projections, opinions, assumptions or estimates used are for example only and do not present the current or future performance of the property. It is your responsibility to independently verify the accuracy and completeness of the information.



AERIAL PHOTOGRAPHS



For additional information:

Francis D. Santos

754.220.4116

francis@fisherauction.com

Robenson Juste

772.971.2431

rjusterealtor@gmail.com



FISHER
AUCTION COMPANY



92nd Place

SR 7 / US 441