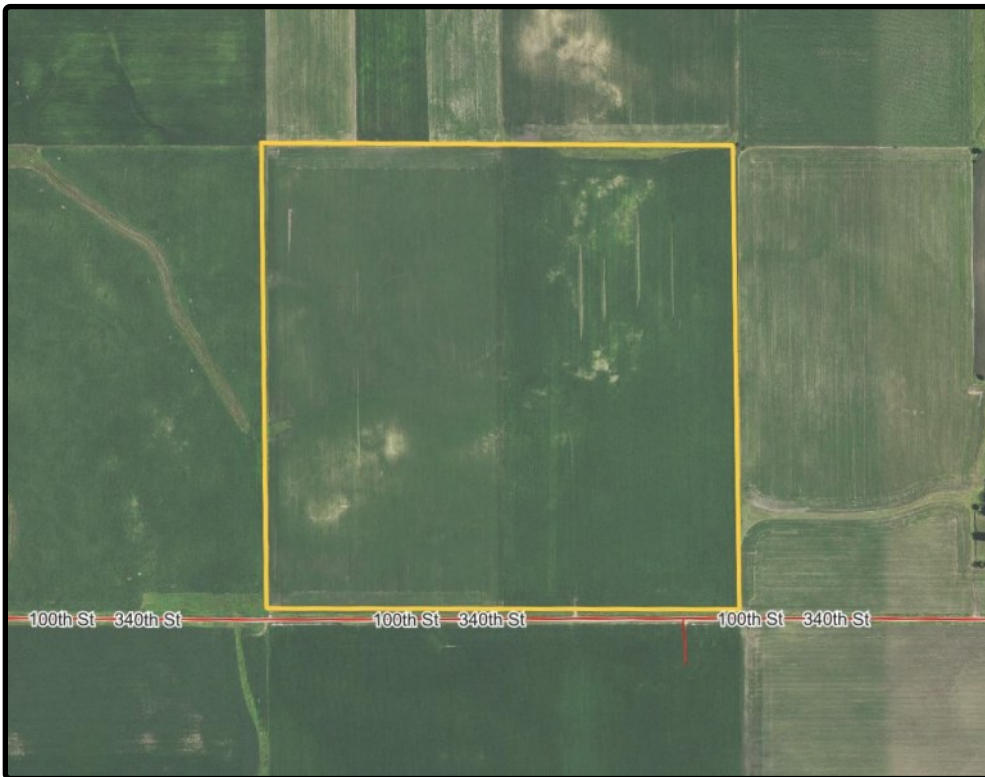


**Greene County, Iowa  
1,342.05 Acres in 12 Parcels**

**Available Information:**

|                        | YIELD DATA | PRIVATE TILE MAP | COUNTY DRAINAGE MAP |
|------------------------|------------|------------------|---------------------|
| Parcel 1 - 160.00 Ac.  | ✓          | No Maps          | ✓                   |
| Parcel 2 - 156.88 Ac.  | ✓          | No Maps          | ✓                   |
| Parcel 3 - 80.00 Ac.   | ✓          | ✓                | ✓                   |
| Parcel 4 - 142.24 Ac.  | ✓          | No Maps          | ✓                   |
| Parcel 5 - 80.00 Ac.   | ✓          | No Maps          | ✓                   |
| Parcel 6 - 98.10 Ac.   | ✓          | ✓                | ✓                   |
| Parcel 7 - 137.64 Ac.  | ✓          | No Maps          | ✓                   |
| Parcel 8 - 40.06 Ac.   | ✓          | No Maps          | ✓                   |
| Parcel 9 - 140.00 Ac.  | ✓          | ✓                | ✓                   |
| Parcel 10 - 80.00 Ac.  | ✓          | No Maps          | ✓                   |
| Parcel 11 - 101.29 Ac. | ✓          | ✓                | ✓                   |
| Parcel 12 - 125.84 Ac. | ✓          | No Maps          | ✓                   |



### Yield History (Bu./Ac.)

| Year | Corn  | Beans |
|------|-------|-------|
| 2018 | 260.1 | 63.1  |
| 2017 | 202.6 | 69.2  |
| 2016 | 220.1 | 51.1  |
| 2015 | 217.3 | -     |
| 2014 | -     | 51.0  |

Yield information is reported by owner management records.

### Drainage

Terraces in northeast part of farm. Some private tile. No maps available.



### Doug Hensley

Licensed Broker in IA, MN, NE, WI  
Licensed Managing Broker in IL  
[Doug.Hensley@Hertz.ag](mailto:Doug.Hensley@Hertz.ag)

**800-593-5263**

415 S. 11th St., PO Box 500  
Nevada, IA 50201  
[www.Hertz.ag](http://www.Hertz.ag)

### Kyle Hansen, ALC

Licensed in IA & MO  
[KyleH@Hertz.ag](mailto:KyleH@Hertz.ag)



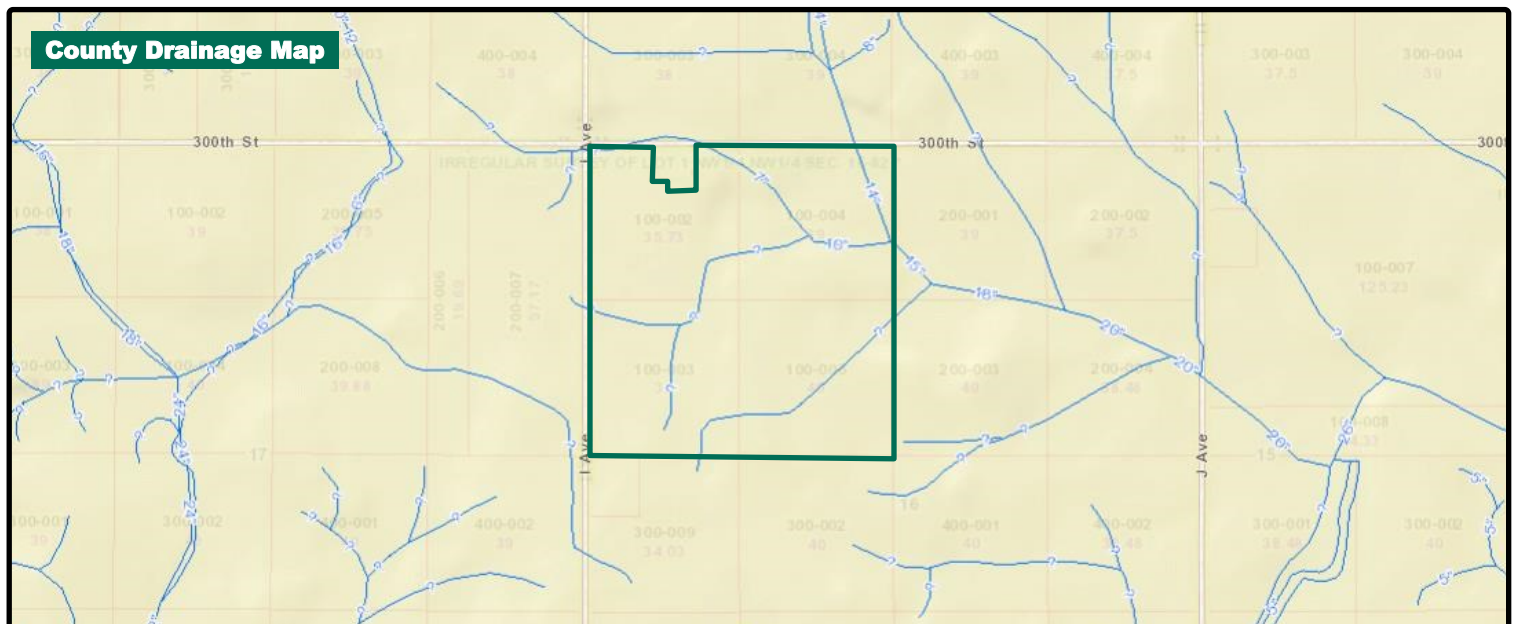
### Yield History (Bu./Ac.)

| Year | Corn  | Beans |
|------|-------|-------|
| 2018 | 244.9 | 62.4  |
| 2017 | 212.2 | 61.7  |
| 2016 | 205.9 | 64.9  |
| 2015 | 201.4 | 56.3  |
| 2014 | 176.0 | -     |

Yield information is reported by owner management records.

### Drainage

County and private tile. Farm lies within Drainage Districts 84 and 128. No private tile maps available.



#### Doug Hensley

Licensed Broker in IA, MN, NE, WI  
Licensed Managing Broker in IL

[Doug.Hensley@Hertz.ag](mailto:Doug.Hensley@Hertz.ag)

**800-593-5263**

415 S. 11th St., PO Box 500  
Nevada, IA 50201

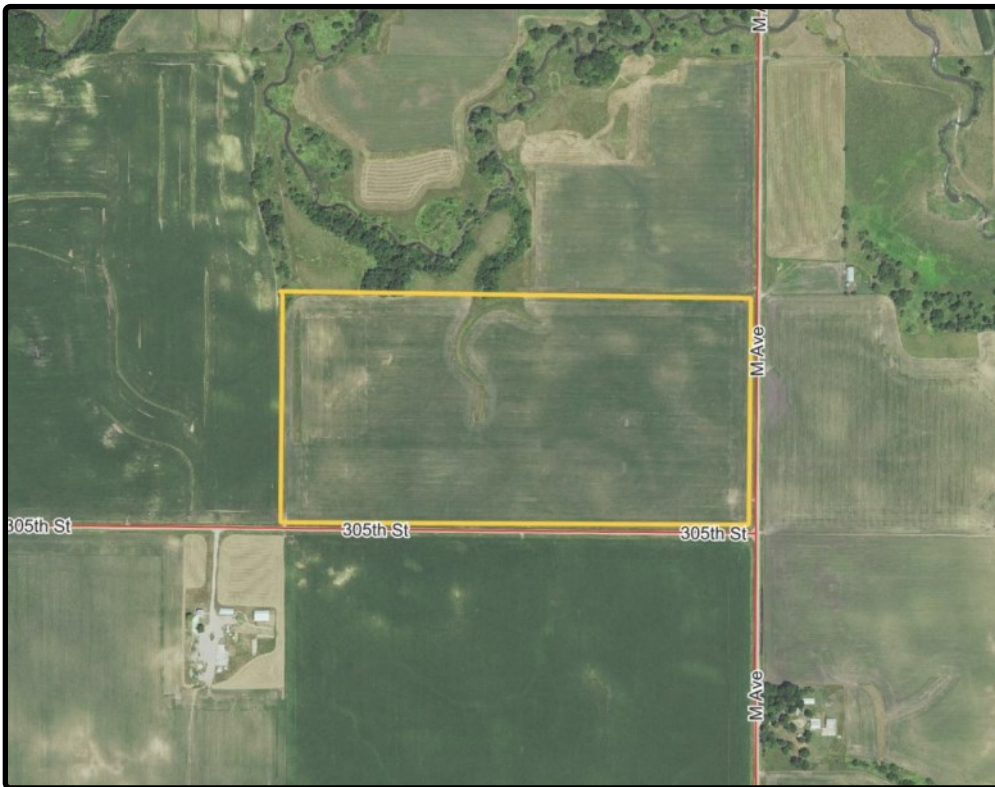
[www.Hertz.ag](http://www.Hertz.ag)

#### Kyle Hansen, ALC

Licensed in IA & MO

[KyleH@Hertz.ag](mailto:KyleH@Hertz.ag)





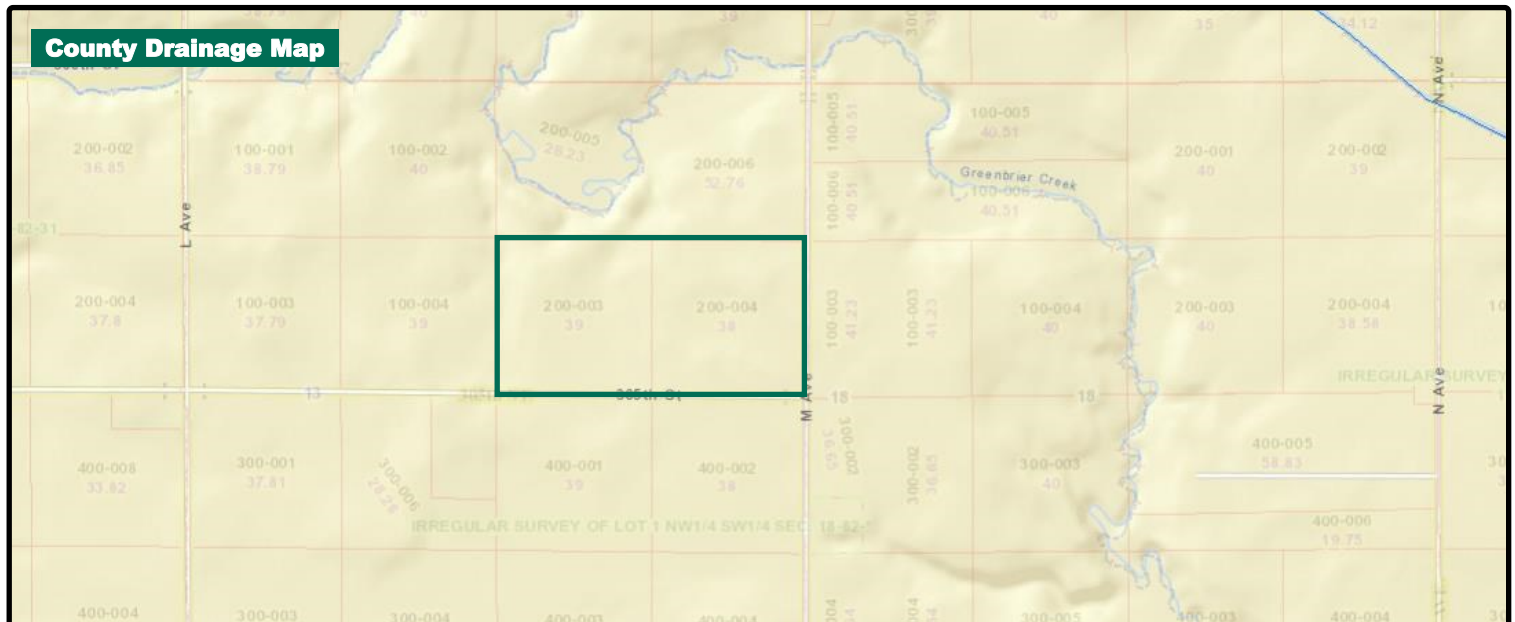
### Yield History (Bu./Ac.)

| Year | Corn  | Beans |
|------|-------|-------|
| 2018 | 229.3 | -     |
| 2017 | -     | 54.3  |
| 2016 | 249.2 | -     |
| 2015 | -     | 61.3  |
| 2014 | 152.0 | -     |

Yield information is reported by owner management records.

### Drainage

Private tile. See maps for detail.



### Doug Hensley

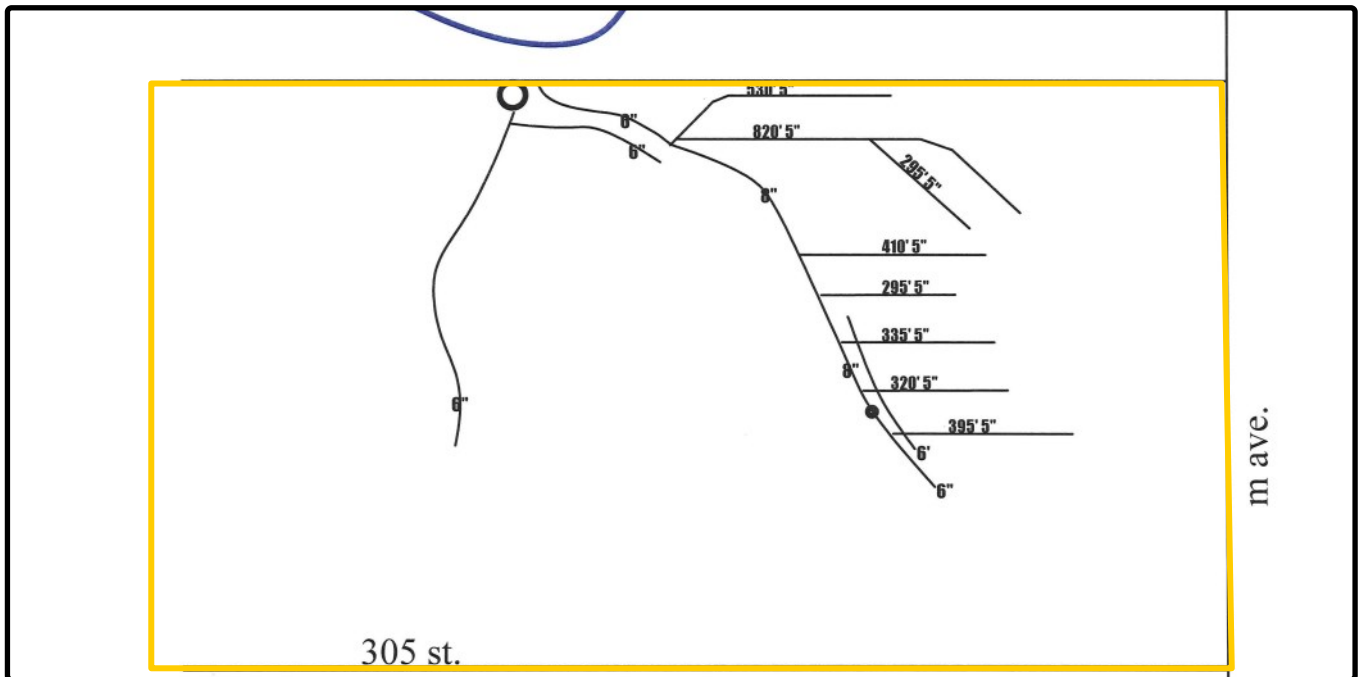
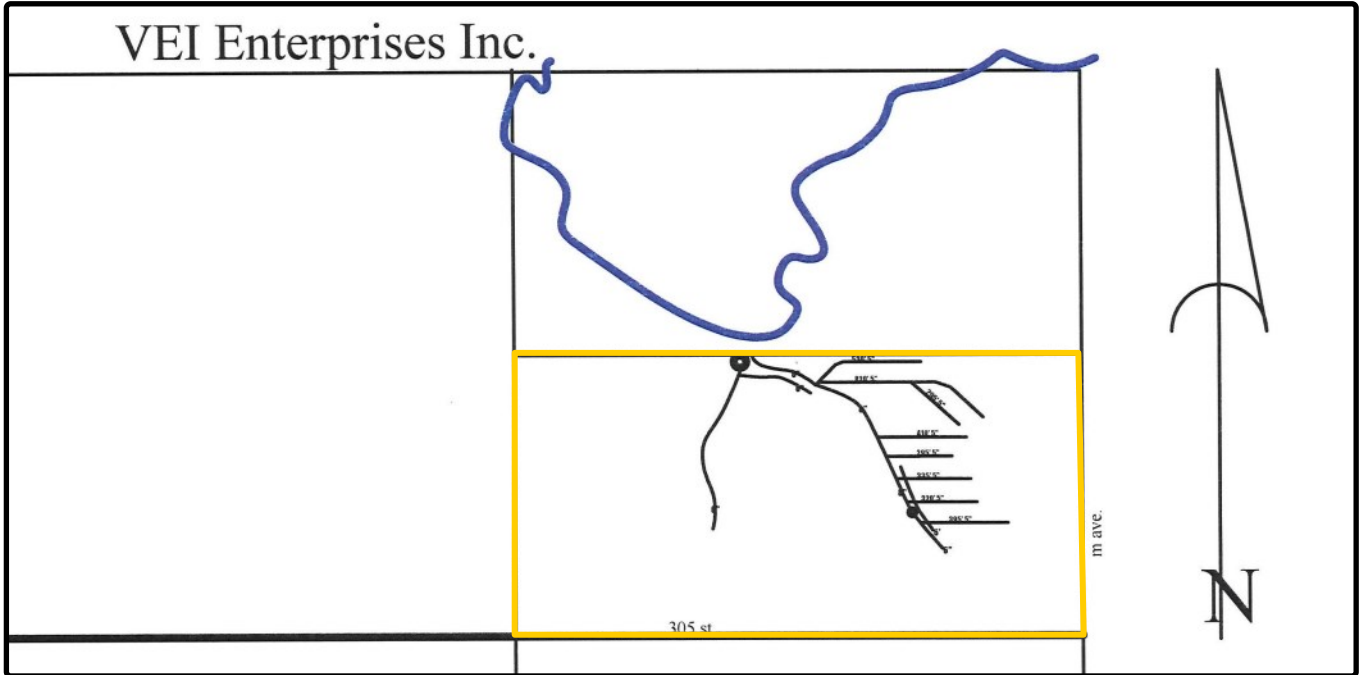
Licensed Broker in IA, MN, NE, WI  
Licensed Managing Broker in IL  
[Doug.Hensley@Hertz.ag](mailto:Doug.Hensley@Hertz.ag)

**800-593-5263**

415 S. 11th St., PO Box 500  
Nevada, IA 50201  
[www.Hertz.ag](http://www.Hertz.ag)

### Kyle Hansen, ALC

Licensed in IA & MO  
[KyleH@Hertz.ag](mailto:KyleH@Hertz.ag)



**Doug Hensley**

Licensed Broker in IA, MN, NE, WI  
Licensed Managing Broker in IL

**Doug.Hensley@Hertz.ag**

**800-593-5263**

415 S. 11th St., PO Box 500  
Nevada, IA 50201

**www.Hertz.ag**

**Kyle Hansen, ALC**

Licensed in IA & MO

**KyleH@Hertz.ag**



### Yield History (Bu./Ac.)\*

| Year | Corn  | Beans |
|------|-------|-------|
| 2018 | 201.8 | 60.5  |
| 2017 | 204.7 | 65.0  |
| 2016 | 208.1 | 58.3  |
| 2015 | 203.8 | 51.8  |
| 2014 | 173.4 | 42.8  |

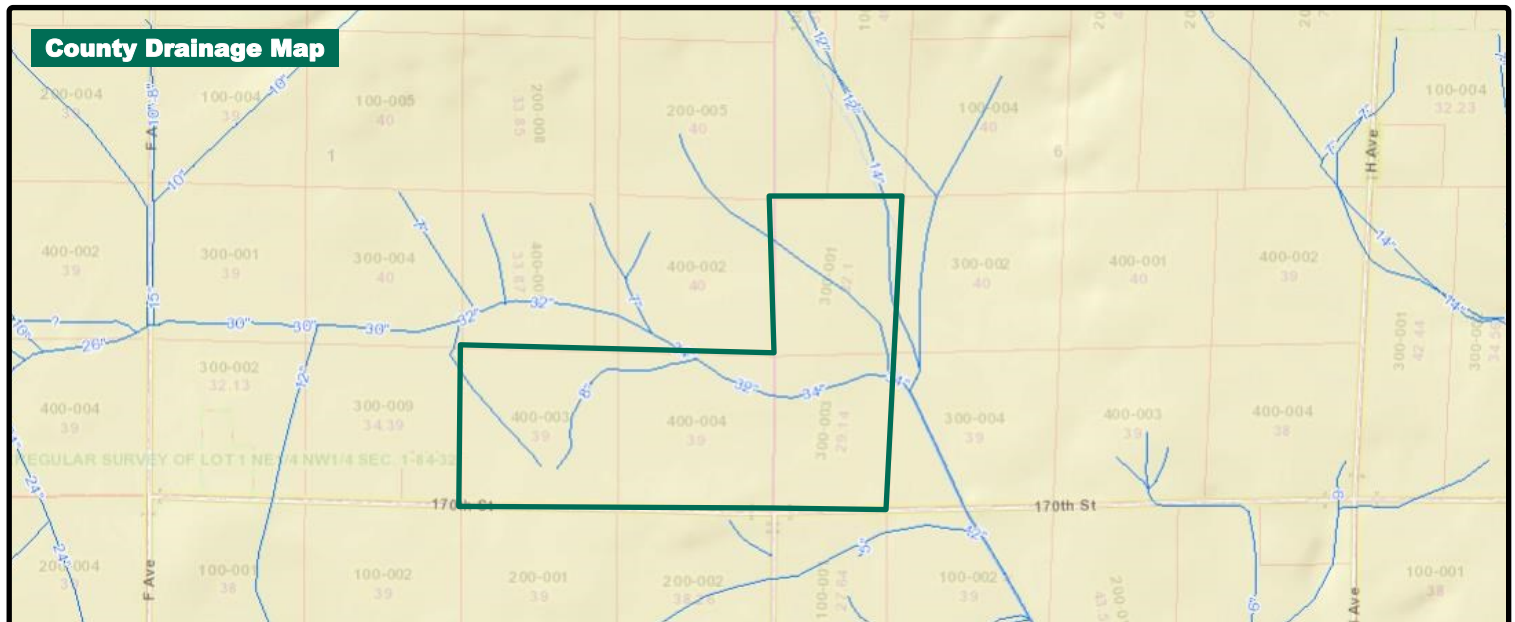
Yield information is reported by owner management records.

\*Yields shown are for Parcels 4 and 5 combined.

### Drainage

County and private tile. Farm lies within Drainage District 102. No private tile maps available.

Drainage Assessment 2019: \$199.00



### Doug Hensley

Licensed Broker in IA, MN, NE, WI  
Licensed Managing Broker in IL  
[Doug.Hensley@Hertz.ag](mailto:Doug.Hensley@Hertz.ag)

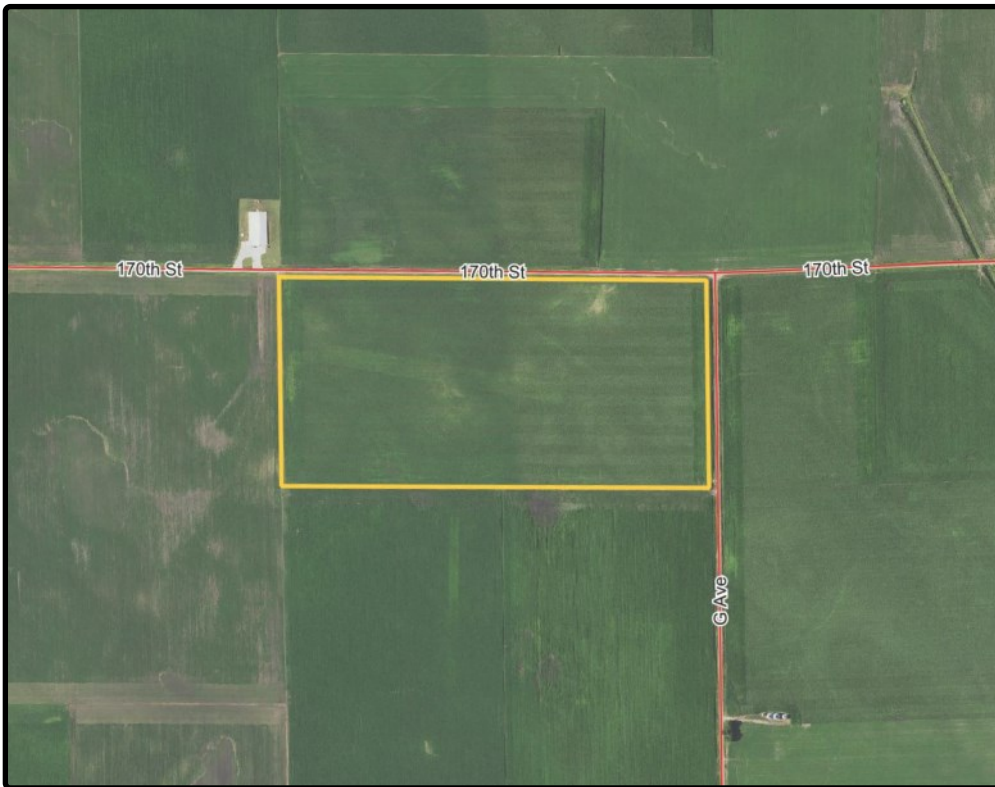
**800-593-5263**

415 S. 11th St., PO Box 500  
Nevada, IA 50201  
[www.Hertz.ag](http://www.Hertz.ag)

### Kyle Hansen, ALC

Licensed in IA & MO  
[KyleH@Hertz.ag](mailto:KyleH@Hertz.ag)





### Yield History (Bu./Ac.)\*

| Year | Corn  | Beans |
|------|-------|-------|
| 2018 | 201.8 | 60.5  |
| 2017 | 204.7 | 65.0  |
| 2016 | 208.1 | 58.3  |
| 2015 | 203.8 | 51.8  |
| 2014 | 173.4 | 42.8  |

Yield information is reported by owner management records.

\*Yields shown are for Parcels 4 and 5 combined.

### Drainage

County and private tile. Farm lies within Drainage District 102. No private tile maps available.



#### Doug Hensley

Licensed Broker in IA, MN, NE, WI  
Licensed Managing Broker in IL

[Doug.Hensley@Hertz.ag](mailto:Doug.Hensley@Hertz.ag)

**800-593-5263**

415 S. 11th St., PO Box 500  
Nevada, IA 50201

[www.Hertz.ag](http://www.Hertz.ag)

#### Kyle Hansen, ALC

Licensed in IA & MO

[KyleH@Hertz.ag](mailto:KyleH@Hertz.ag)



### Yield History (Bu./Ac.)\*

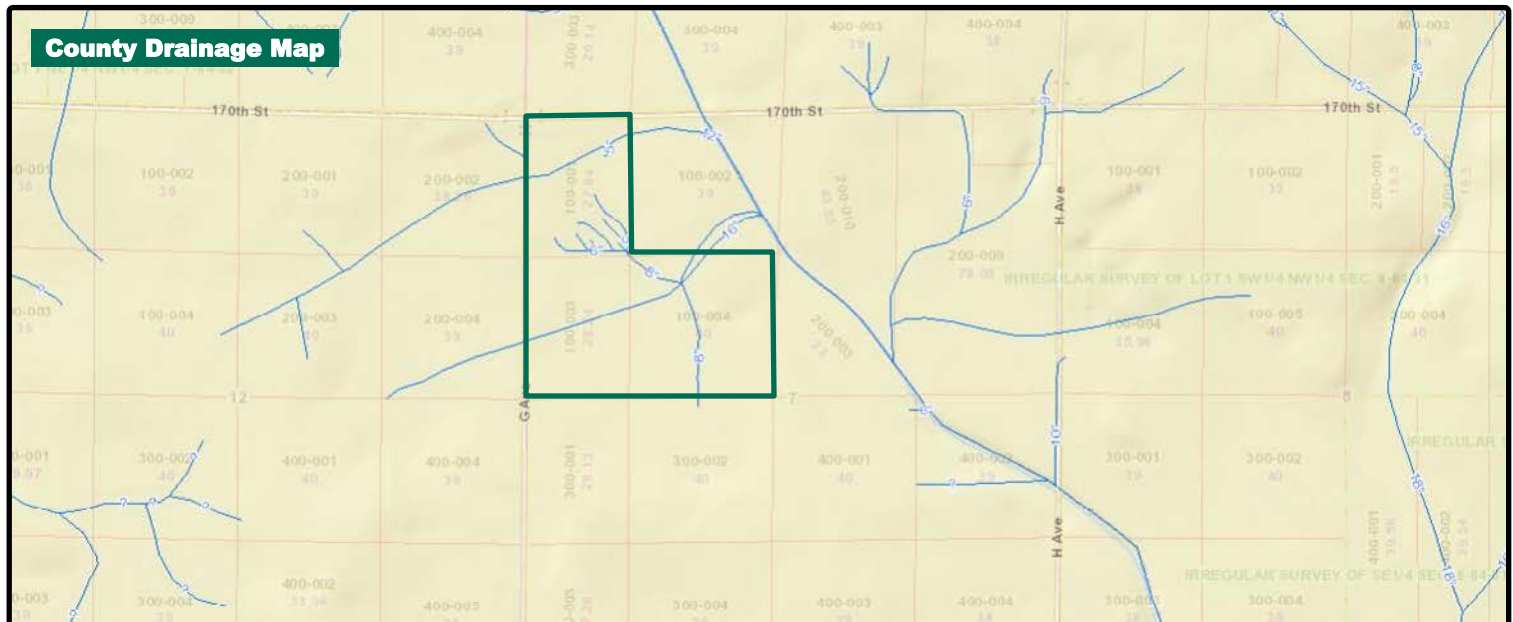
| Year | Corn  | Beans |
|------|-------|-------|
| 2018 | 199.2 | 63.8  |
| 2017 | 198.4 | 66.3  |
| 2016 | 215.6 | 61.4  |
| 2015 | 165.0 | 43.8  |
| 2014 | 171.4 | 45.2  |

Yield information is reported by owner management records.

\*Yields shown are for Parcels 6 and 7 combined.

### Drainage

County and private tile. Farm lies within Drainage District 102. See maps for detail.



#### Doug Hensley

Licensed Broker in IA, MN, NE, WI  
Licensed Managing Broker in IL

[Doug.Hensley@Hertz.ag](mailto:Doug.Hensley@Hertz.ag)

**800-593-5263**

415 S. 11th St., PO Box 500  
Nevada, IA 50201

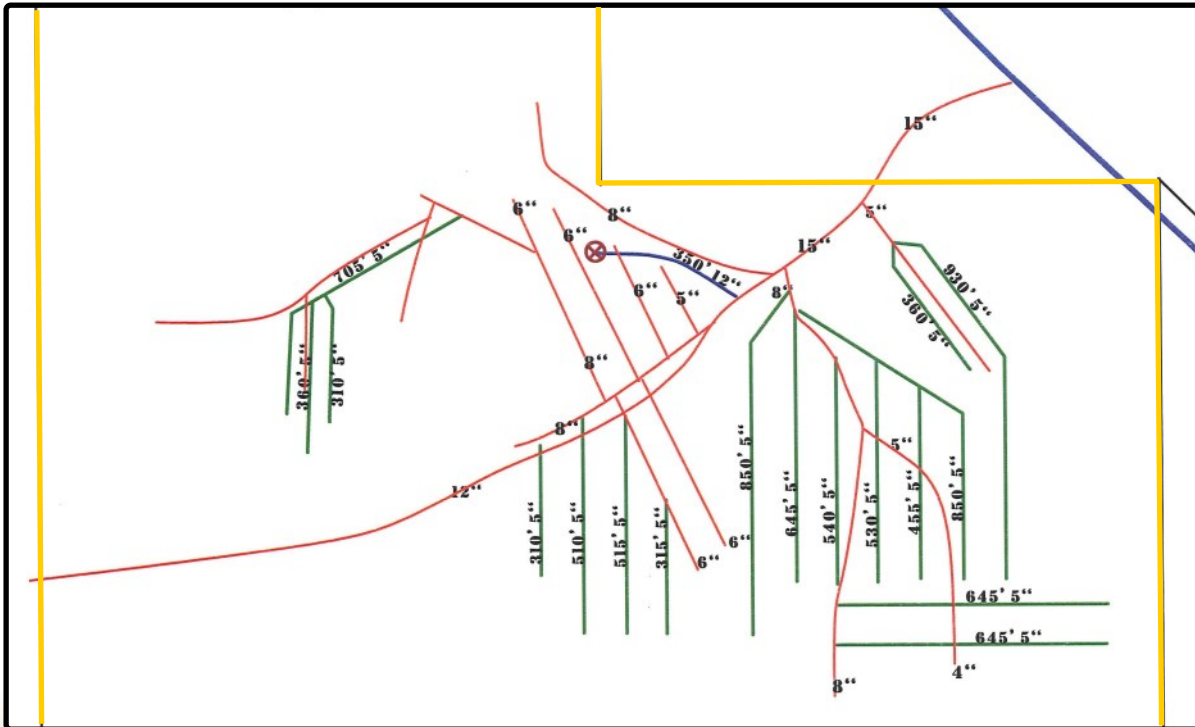
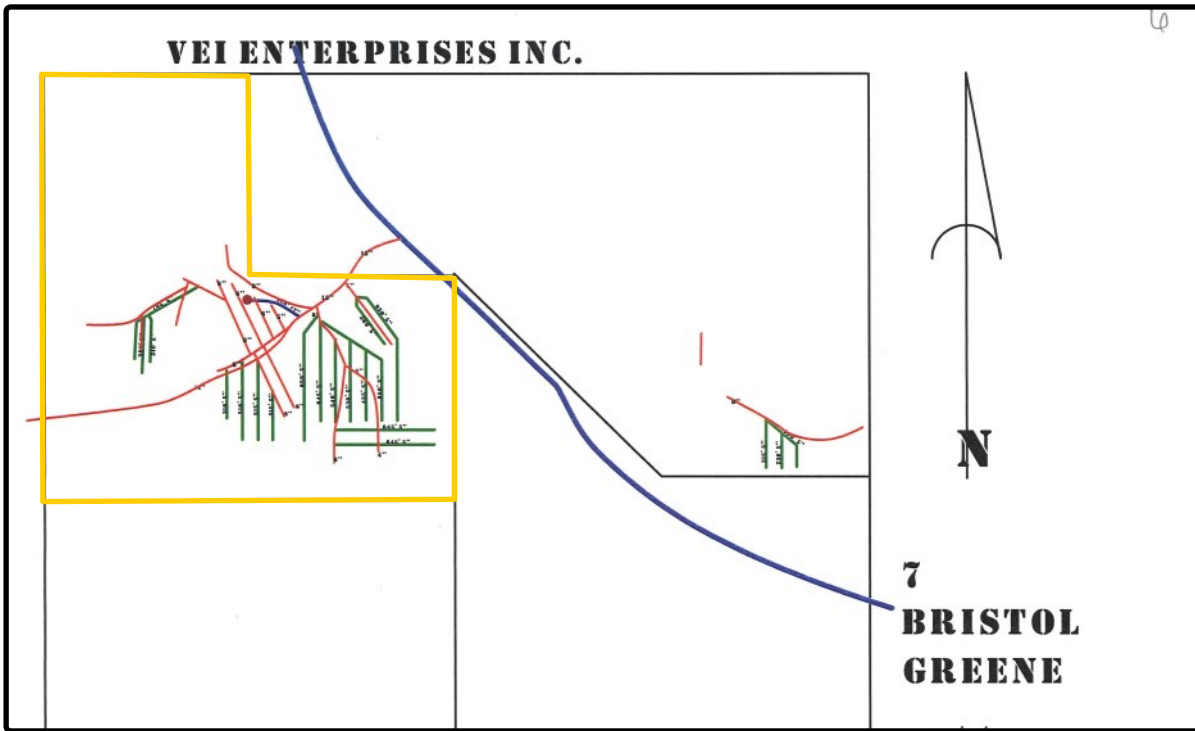
[www.Hertz.ag](http://www.Hertz.ag)

#### Kyle Hansen, ALC

Licensed in IA & MO

[KyleH@Hertz.ag](mailto:KyleH@Hertz.ag)





**Doug Hensley**

Licensed Broker in IA, MN, NE, WI  
Licensed Managing Broker in IL

**Doug.Hensley@Hertz.ag**

**800-593-5263**

415 S. 11th St., PO Box 500  
Nevada, IA 50201

**www.Hertz.ag**

**Kyle Hansen, ALC**

Licensed in IA & MO

**KyleH@Hertz.ag**



### Yield History (Bu./Ac.)\*

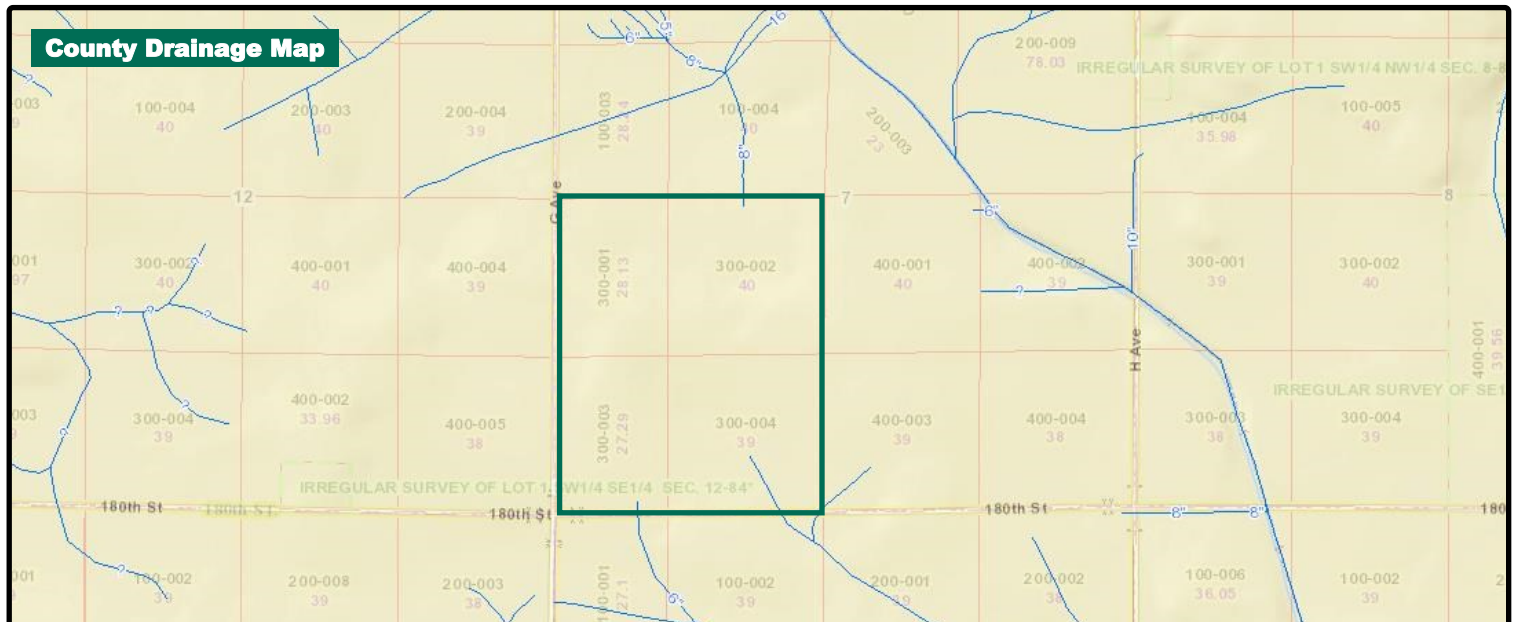
| Year | Corn  | Beans |
|------|-------|-------|
| 2018 | 199.2 | 63.8  |
| 2017 | 198.4 | 66.3  |
| 2016 | 215.6 | 61.4  |
| 2015 | 165.0 | 43.8  |
| 2014 | 171.4 | 45.2  |

Yield information is reported by owner management records.

\*Yields shown are for Parcels 6 and 7 combined.

### Drainage

County and private tile. Farm lies within Drainage Districts 81 and 102. No private tile maps available.



### Doug Hensley

Licensed Broker in IA, MN, NE, WI  
Licensed Managing Broker in IL  
[Doug.Hensley@Hertz.ag](mailto:Doug.Hensley@Hertz.ag)

**800-593-5263**

415 S. 11th St., PO Box 500  
Nevada, IA 50201  
[www.Hertz.ag](http://www.Hertz.ag)

### Kyle Hansen, ALC

Licensed in IA & MO  
[KyleH@Hertz.ag](mailto:KyleH@Hertz.ag)



### Yield History (Bu./Ac.)

| Year | Corn  | Beans |
|------|-------|-------|
| 2018 | -     | 60.3  |
| 2017 | 191.7 | -     |
| 2016 | -     | 47.44 |
| 2015 | 196.6 | -     |
| 2014 | -     | 38.5  |

Yield information is reported by owner management records.

### Drainage

County and private tile. Farm lies within Drainage District 102. No private tile maps available.



#### Doug Hensley

Licensed Broker in IA, MN, NE, WI  
Licensed Managing Broker in IL  
[Doug.Hensley@Hertz.ag](mailto:Doug.Hensley@Hertz.ag)

**800-593-5263**

415 S. 11th St., PO Box 500  
Nevada, IA 50201  
[www.Hertz.ag](http://www.Hertz.ag)

#### Kyle Hansen, ALC

Licensed in IA & MO  
[KyleH@Hertz.ag](mailto:KyleH@Hertz.ag)





### Yield History (Bu./Ac.)\*

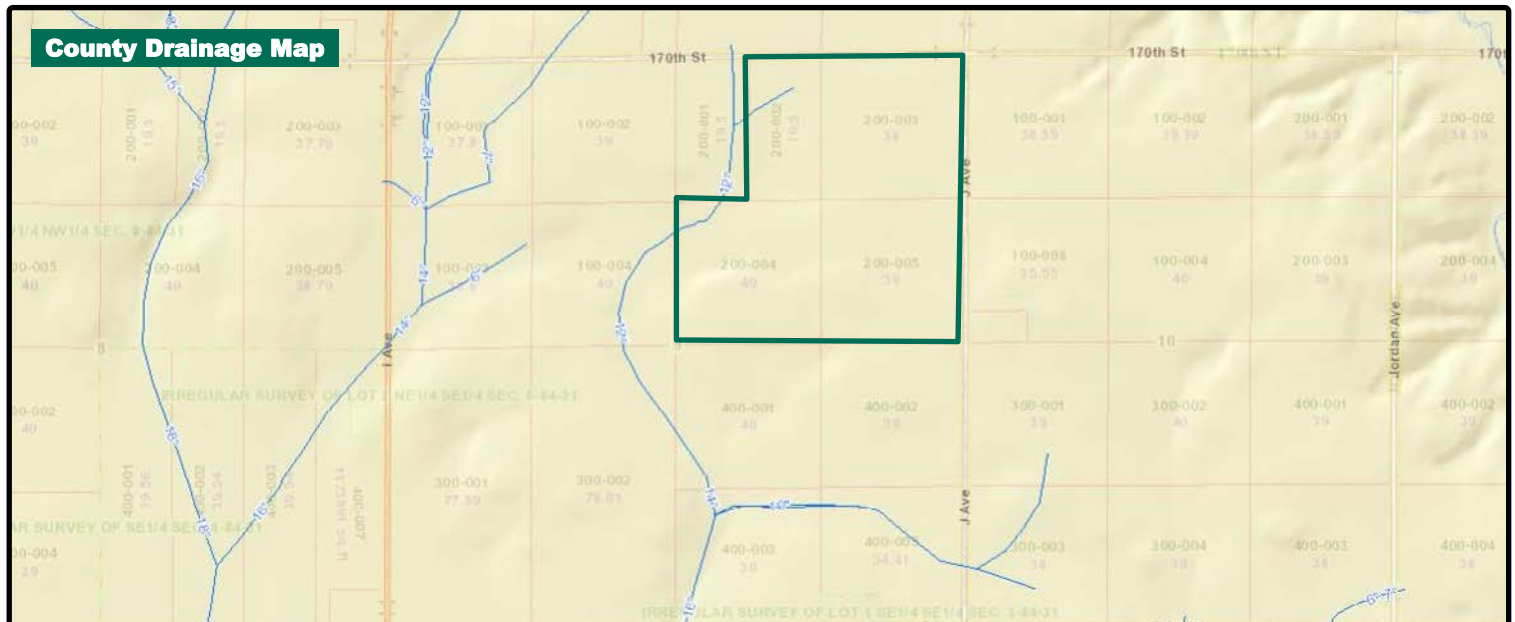
| Year | Corn  | Beans |
|------|-------|-------|
| 2018 | 221.3 | 58.3  |
| 2017 | 227.9 | 56.8  |
| 2016 | 200.1 | 64.5  |
| 2015 | 195.3 | 55.4  |
| 2014 | 189.7 | 57.0  |

Yield information is reported by owner management records.

\*Yields shown are for Parcels 9 and 10 combined.

### Drainage

County and private tile. Farm lies within Drainage District 30. See maps for detail.



**Doug Hensley**

Licensed Broker in IA, MN, NE, WI  
Licensed Managing Broker in IL

[Doug.Hensley@Hertz.ag](mailto:Doug.Hensley@Hertz.ag)

**800-593-5263**

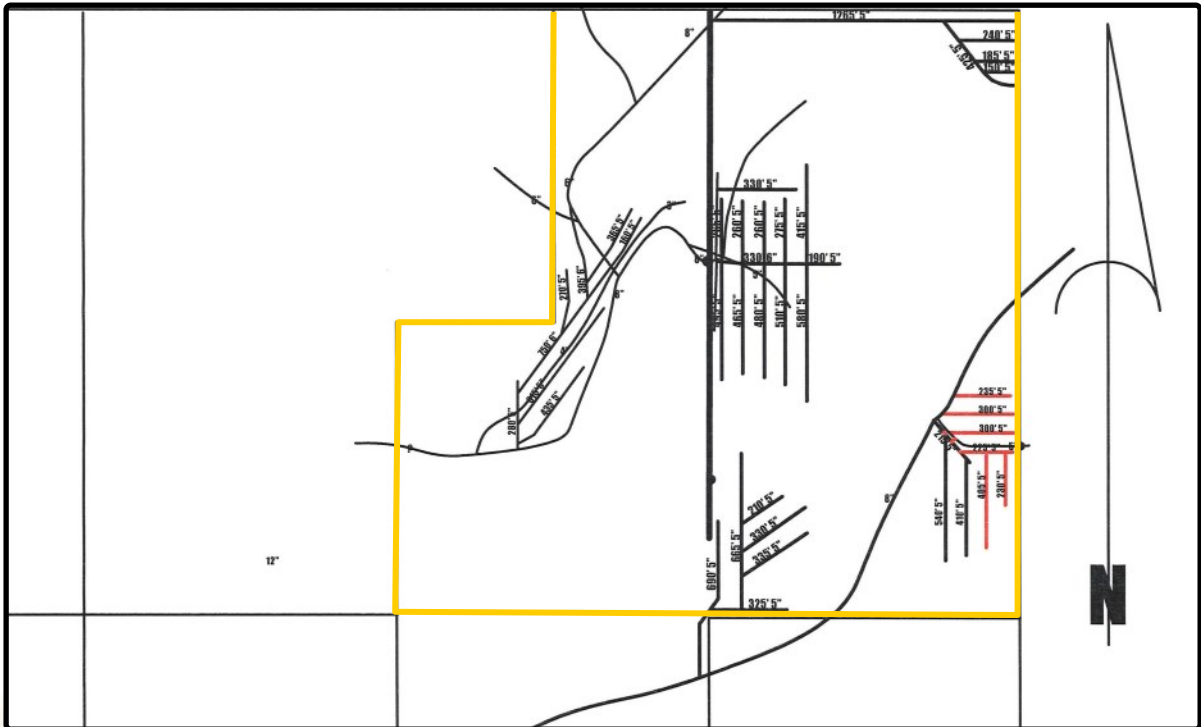
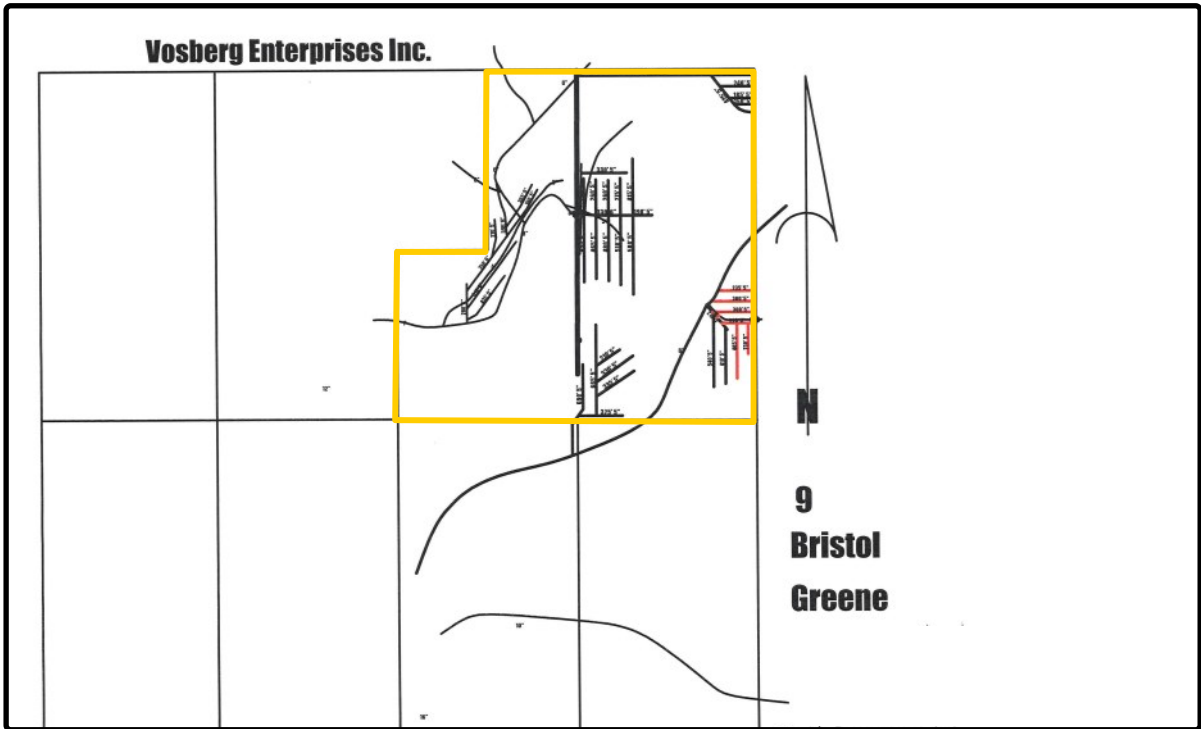
415 S. 11th St., PO Box 500  
Nevada, IA 50201

[www.Hertz.ag](http://www.Hertz.ag)

**Kyle Hansen, ALC**

Licensed in IA & MO

[KyleH@Hertz.ag](mailto:KyleH@Hertz.ag)



**Doug Hensley**

Licensed Broker in IA, MN, NE, WI  
Licensed Managing Broker in IL

**Doug.Hensley@Hertz.ag**

**800-593-5263**

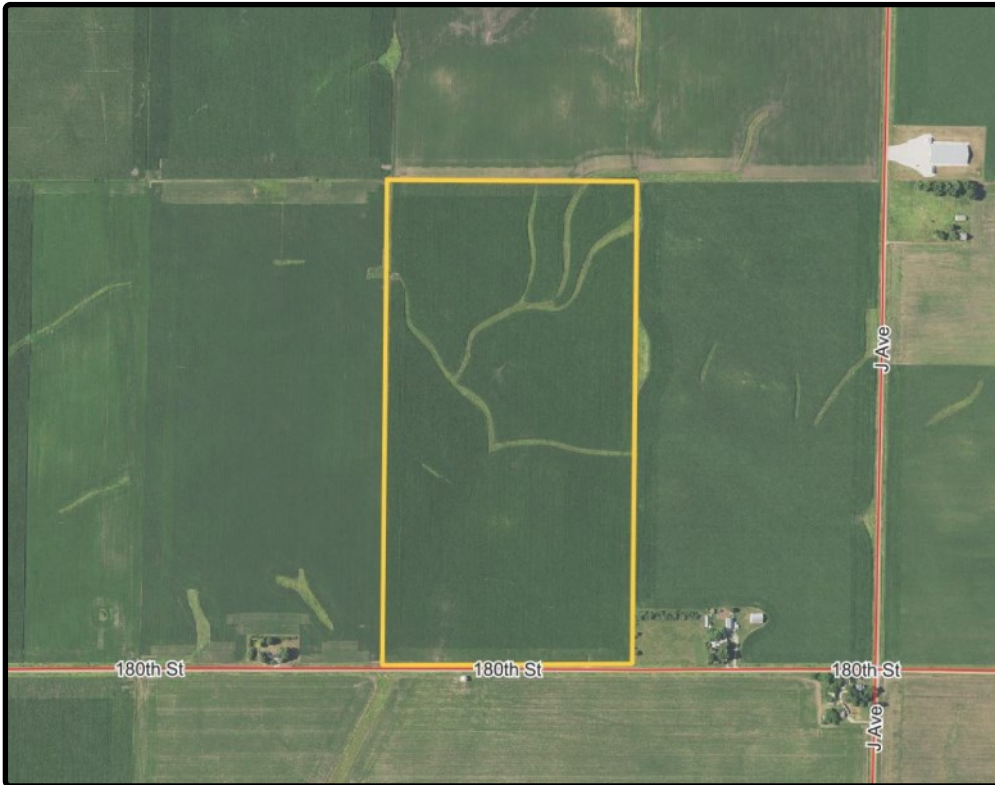
415 S. 11th St., PO Box 500  
Nevada, IA 50201

**www.Hertz.ag**

**Kyle Hansen, ALC**

Licensed in IA & MO

**KyleH@Hertz.ag**



### Yield History (Bu./Ac.)\*

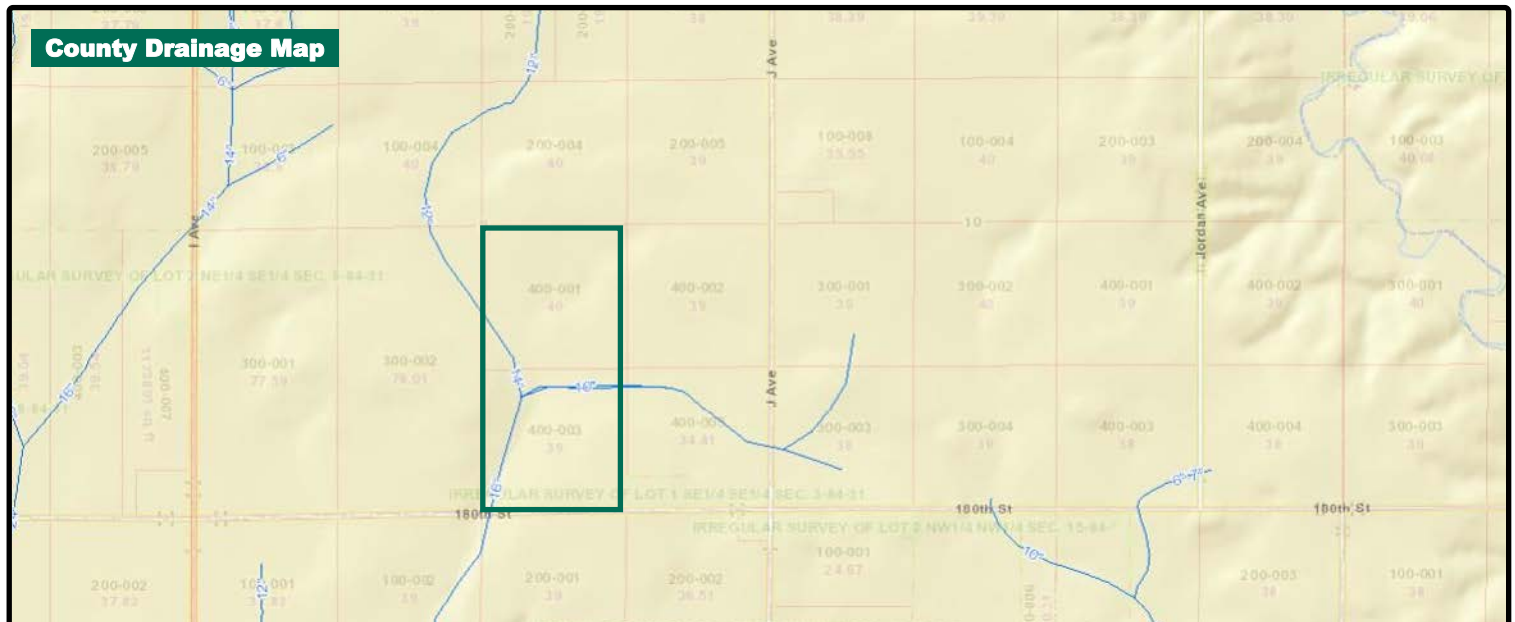
| Year | Corn  | Beans |
|------|-------|-------|
| 2018 | 221.3 | 58.3  |
| 2017 | 227.9 | 56.8  |
| 2016 | 200.1 | 64.5  |
| 2015 | 195.3 | 55.4  |
| 2014 | 189.7 | 57.0  |

Yield information is reported by owner management records.

\*Yields shown are for Parcels 9 and 10 combined.

### Drainage

Property has a series of waterways providing surface drainage, along with county and private tile. Farm lies within Drainage District 30. No private tile maps available.



### Doug Hensley

Licensed Broker in IA, MN, NE, WI  
Licensed Managing Broker in IL  
[Doug.Hensley@Hertz.ag](mailto:Doug.Hensley@Hertz.ag)

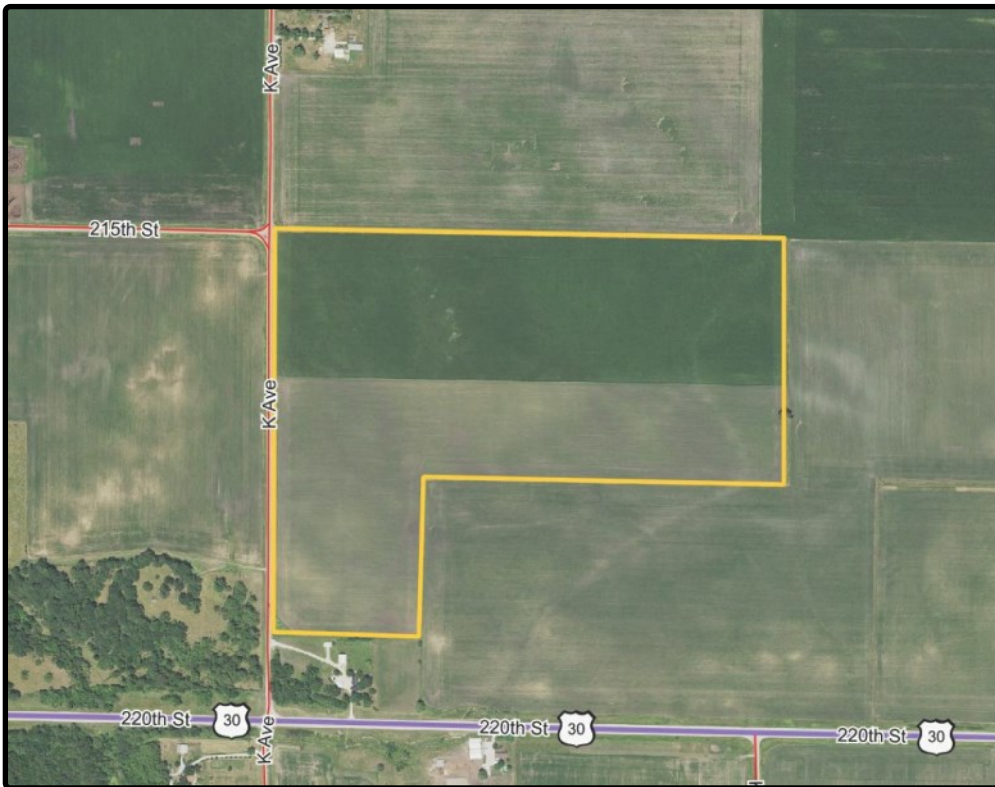
**800-593-5263**

415 S. 11th St., PO Box 500  
Nevada, IA 50201  
[www.Hertz.ag](http://www.Hertz.ag)

### Kyle Hansen, ALC

Licensed in IA & MO  
[KyleH@Hertz.ag](mailto:KyleH@Hertz.ag)





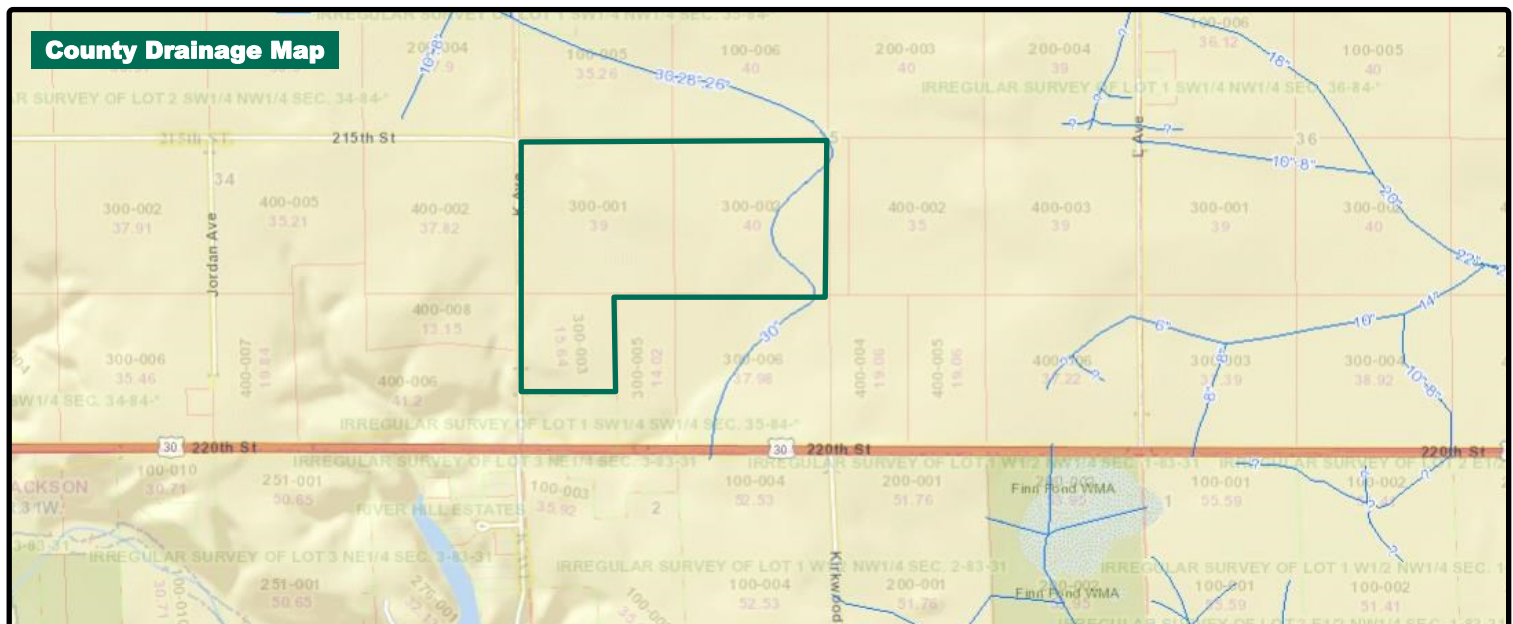
### Yield History (Bu./Ac.)

| Year | Corn  | Beans |
|------|-------|-------|
| 2018 | 216.3 | 63.8  |
| 2017 | 191.7 | 54.5  |
| 2016 | 209.8 | 64.0  |
| 2015 | 199.7 | 49.3  |
| 2014 | 207.0 | 56.0  |

Yield information is reported by owner management records.

### Drainage

County and private tile. Farm lies within Drainage District 180. See maps for detail.



### Doug Hensley

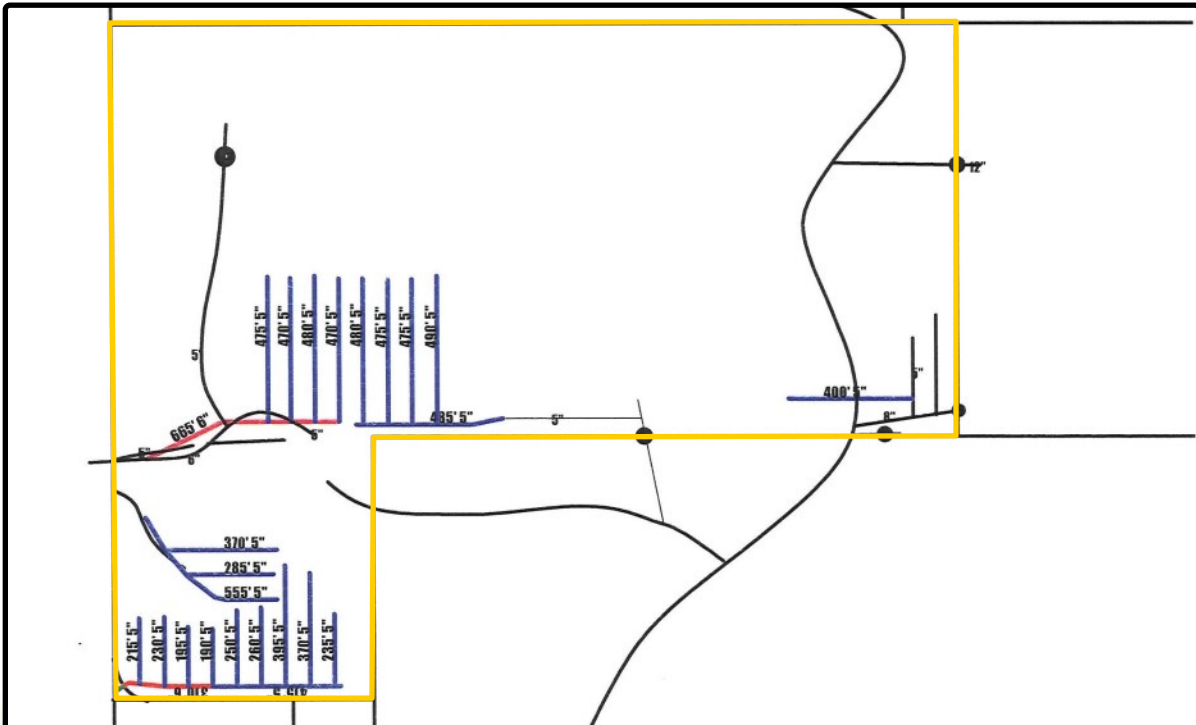
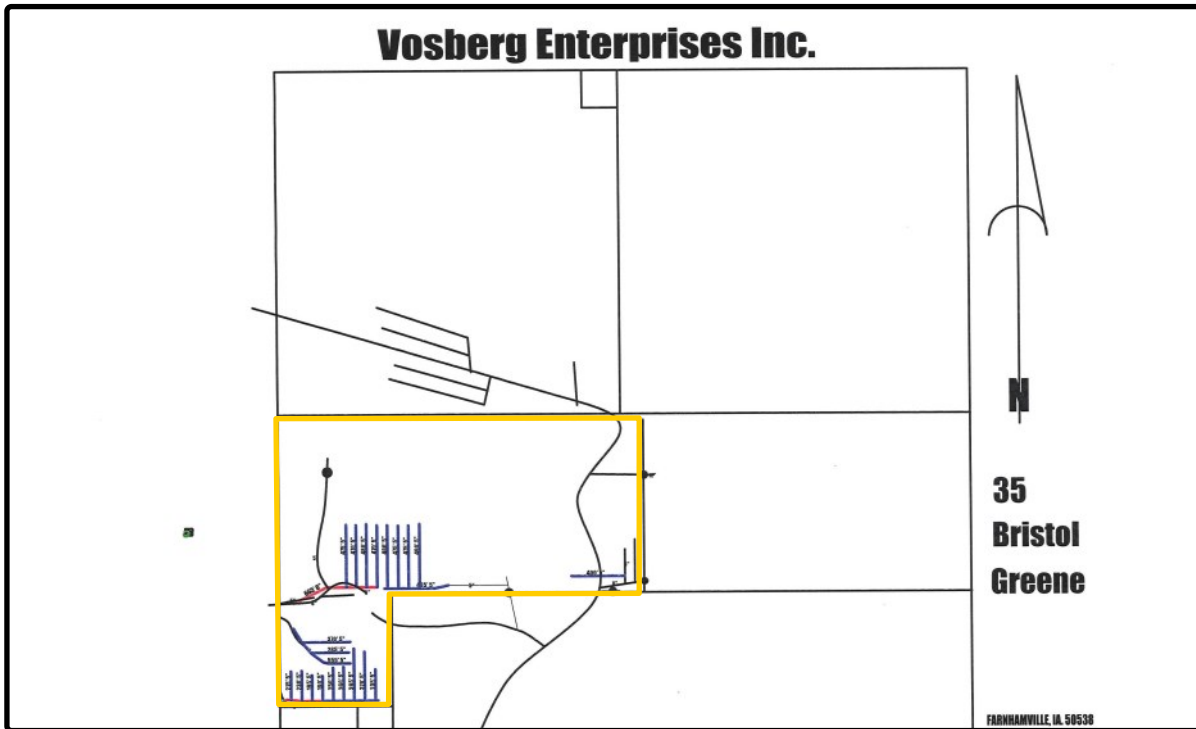
Licensed Broker in IA, MN, NE, WI  
Licensed Managing Broker in IL  
[Doug.Hensley@Hertz.ag](mailto:Doug.Hensley@Hertz.ag)

**800-593-5263**

415 S. 11th St., PO Box 500  
Nevada, IA 50201  
[www.Hertz.ag](http://www.Hertz.ag)

### Kyle Hansen, ALC

Licensed in IA & MO  
[KyleH@Hertz.ag](mailto:KyleH@Hertz.ag)



**Doug Hensley**

Licensed Broker in IA, MN, NE, WI  
 Licensed Managing Broker in IL

**Doug.Hensley@Hertz.ag**

**800-593-5263**

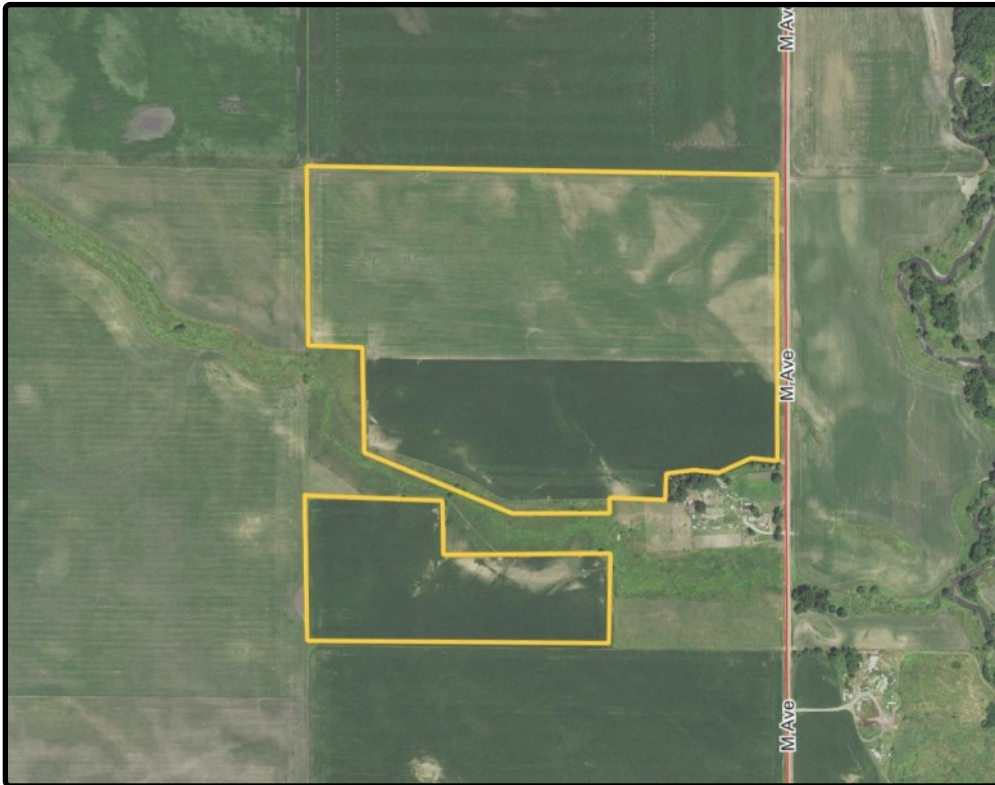
415 S. 11th St., PO Box 500  
 Nevada, IA 50201

**www.Hertz.ag**

**Kyle Hansen, ALC**

Licensed in IA & MO

**KyleH@Hertz.ag**



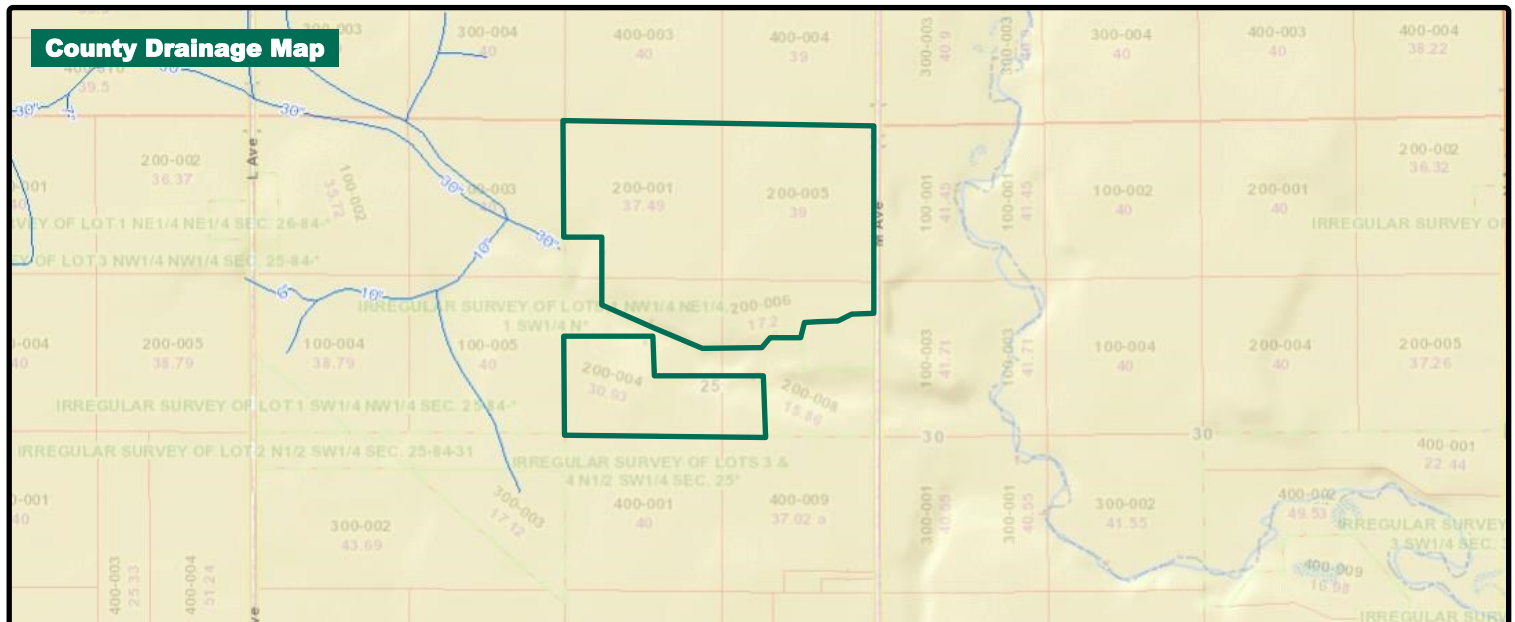
### Yield History (Bu./Ac.)

| Year | Corn  | Beans |
|------|-------|-------|
| 2018 | 201.1 | 59.8  |
| 2017 | 190.9 | 50.4  |
| 2016 | 202.4 | 63.1  |
| 2015 | 185.3 | 59.5  |
| 2014 | 186.0 | 54.2  |

Yield information is reported by owner management records.

### Drainage

Surface drained.



**Doug Hensley**

Licensed Broker in IA, MN, NE, WI  
Licensed Managing Broker in IL

[Doug.Hensley@Hertz.ag](mailto:Doug.Hensley@Hertz.ag)

**800-593-5263**

415 S. 11th St., PO Box 500  
Nevada, IA 50201

[www.Hertz.ag](http://www.Hertz.ag)

**Kyle Hansen, ALC**

Licensed in IA & MO

[KyleH@Hertz.ag](mailto:KyleH@Hertz.ag)