



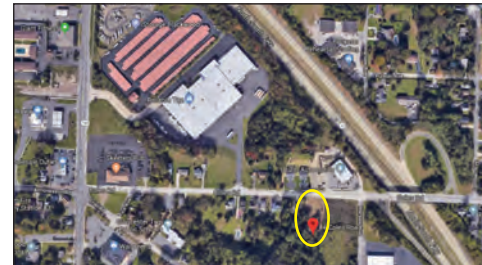
AUCTION

November
15th



BY ORDER OF THE TOWNSHIP OF GLOUCESTER

12 RESIDENTIAL AND COMMERCIAL LOTS



GLOUCESTER TOWNSHIP, CAMDEN COUNTY

AUCTION

BY ORDER OF THE TOWNSHIP OF GLOUCESTER

12 RESIDENTIAL AND COMMERCIAL LOTS

GLOUCESTER TOWNSHIP, CAMDEN COUNTY

Auction: November 15, 2018 at 1 PM

Auction Location:

Gloucester Township Municipal Building

1261 Chews Landing-Clementon Rd

Gloucester Township, Camden County, NJ 08012

15-Minute Auction Information Sessions

Running Continuously

Thursday, November 1st, between 12-2 PM

Attention Builders, Investors, and Neighbors!!

Gloucester Township is one of the fastest growing municipalities in Southern New Jersey. The population is quickly approaching seventy thousand residents. Gloucester twp is conveniently located for commuters with public transportation service to Philadelphia and easy access to the major roadways AC Expressway (Rt. 42), Route 30, I-295, and NJ Turnpike.

For the List of Properties Visit Maxspann.com



Max Spann Real Estate & Auction Co.
P. O. Box 4992
Clinton, New Jersey 08809
auctions@maxspann.com

A licensed NJ Real Estate Broker



Bid On-Site or On-Line!
Get the MaxSpann Smartphone
App or go on-line



Offices: New York, NY | Clinton, NJ | Naples, FL

888-299-1438 | maxspann.com

