



# AUCTION

February 13<sup>th</sup>

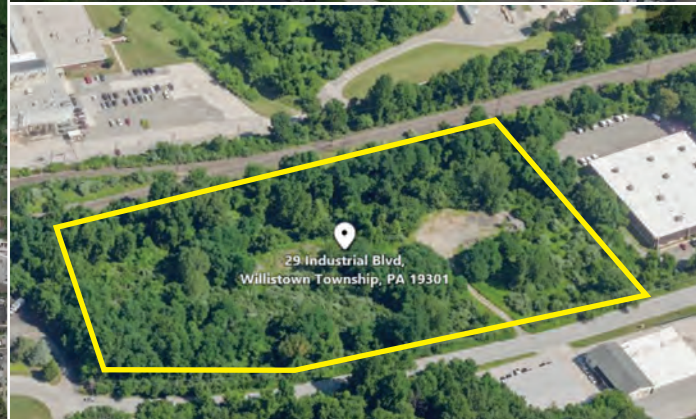
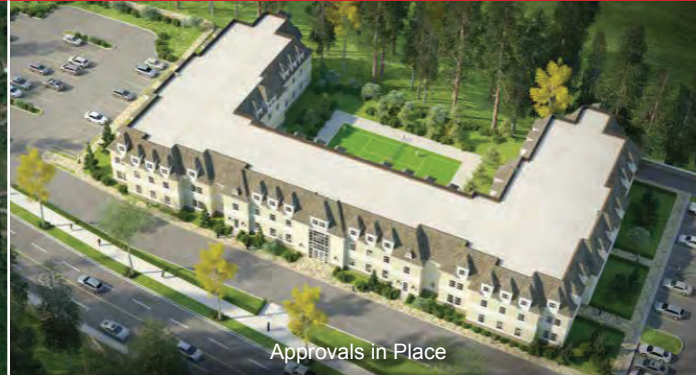
Previously Asking \$2,250,000 – Minimum Bid \$600,000



7.5+/- ACRE COMMERCIAL DEVELOPMENT SITE

ZONING:  
RESIDENTIAL CARE,  
WAREHOUSE DISTRIBUTION,  
INDUSTRIAL...

PAOLI, CHESTER COUNTY, PA



# AUCTION

7.5<sup>+</sup> ACRE COMMERCIAL  
DEVELOPMENT SITE



Max Spann  
Real Estate & Auction Co.  
P. O. Box 4992  
Clinton, New Jersey 08809  
auctions@maxspann.com



A licensed PA Real Estate Broker  
Robert L. Dann Auctioneer  
#AU005609

Guaranteed to Sell at or Above the Minimum Bid \$600,000

Auction Date: February 13, 2019 at 1 PM

## PAOLI, CHESTER COUNTY, PA



Attention Investors and Developers!  
Don't Miss this Fantastic  
Development Opportunity

**PROPERTY ADDRESS:**

27-29 Industrial Boulevard  
Paoli, Tredyffrin Township, PA 19301

- Medical Office, Assisted Living, or Light Industrial Possibilities
- Excellent Opportunity to add to your Real Estate Holdings
- Down the road from Paoli Hospital, ranked among the top 10 hospitals in the Philadelphia Metro area by U.S. News & World Report
- Directly off Route 30 and convenient access from Route 202 and PA Turnpike

**PROPERTY PREVIEWS 12-2 PM:**

Wednesday, January 23<sup>rd</sup>  
Wednesday, January 30<sup>th</sup>

**Auction Location: Crown Plaza**  
260 Mall Blvd, King of Prussia, PA 19406

Alta Survey, Site Plan, Approvals for 160 Bed Facility available in  
Property Information Package.

For Details Call 888-299-1438 or Online [maxspann.com](http://maxspann.com)