

AUCTION

2 PRESERVED FARMS SOLD SEPARATELY
TOTALING 237+/- ACRES

By Order of Ocean County

DECEMBER 1ST



Max Spann Real Estate & Auction Co.
P. O. Box 4992
Clinton, New Jersey 08809

A licensed NJ Real Estate Broker



OFFICES: NEW YORK - NEW JERSEY - FLORIDA

888-299-1438 | maxspann.com



Bid Online or Live!

Get the Max Spann Smartphone App or go on-line



AUCTION

NEW
AUCTION
AND PREVIEW
DATES

TWO PRESERVED FARMS TOTALING 237+/- ACRES SOLD SEPARATELY

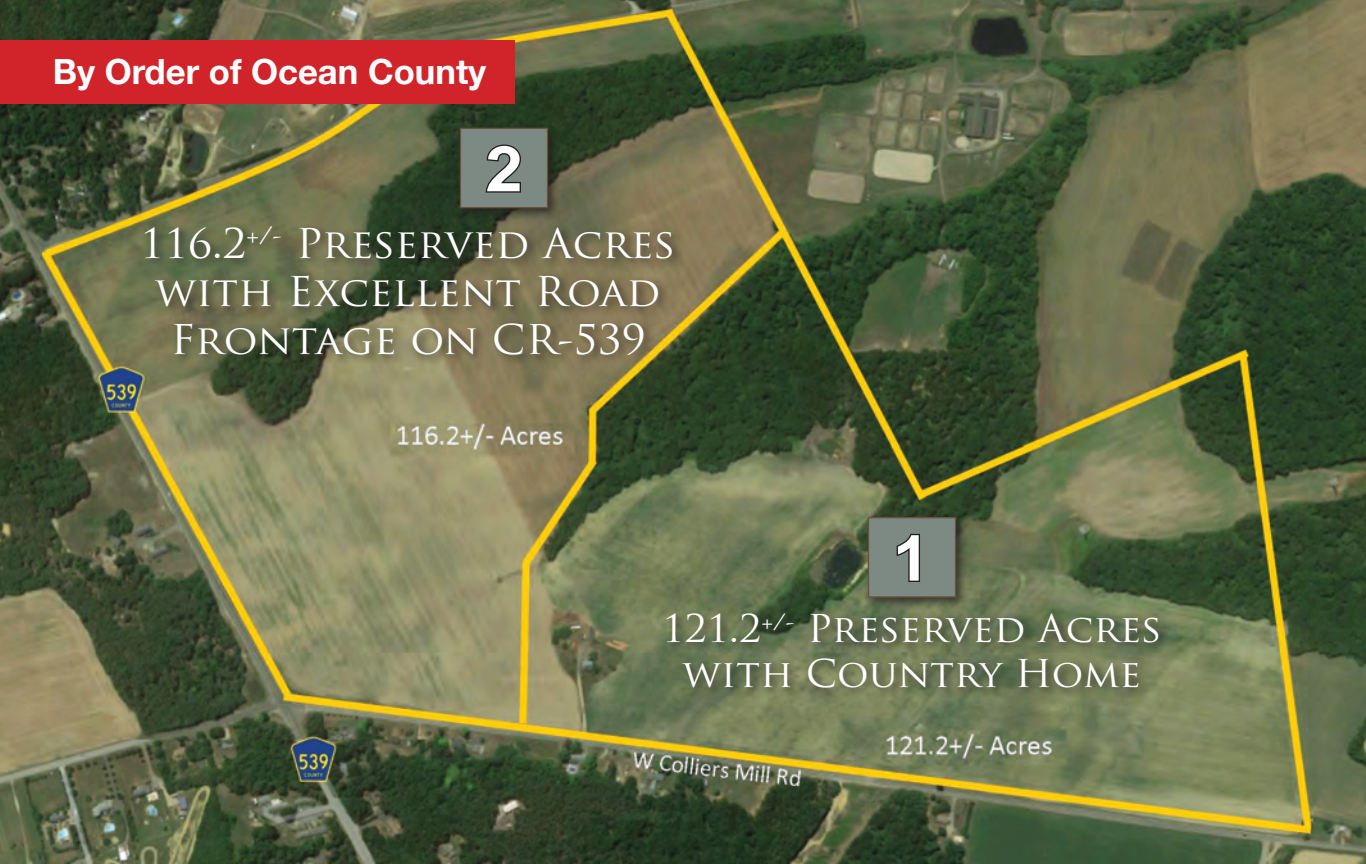
By Order of Ocean County



DECEMBER 1ST
PLUMSTED TWP, OCEAN COUNTY, NJ



By Order of Ocean County



2

116.2+/- PRESERVED ACRES
WITH EXCELLENT ROAD
FRONTAGE ON CR-539

116.2+/- Acres

1

121.2+/- PRESERVED ACRES
WITH COUNTRY HOME

121.2+/- Acres

W Colliers Mill Rd



Farm 1 - Pond and Existing Home



Farm 2 - Build Your Home and Farm Stand

1

121.2 +/- ACRES
PRESERVED FARMLAND

- Build New or rebuild existing home- Your Choice!
- Wonderful opportunity to run a family farm and farm stand.
- Pond for potential irrigation or for a quick dip to cool off in the summer.
- Put up some barns and bring your livestock! Plenty of pasture land.

2

116.2 +/- ACRES
PRESERVED FARMLAND

- Build your dream farm! Make plans for a new home and barns.
- Excellent frontage and visibility on CR-539 for a farm stand.
- Wide open expansive fields allow for a premium crop yield.
- Local Farmers - Increase your holdings by adding this easy to access farm to your existing farm acreage.
- Combine with Farm 1 for a total of 237+/- acres.



Ready to Renovate or Take Down and Build New!



Choice Soils for Your Crops

Bid Live at the Auction or Online with Simulcast Bidding at maxspann.com

Auction: Tuesday, December 1st, 2020 at 11 am

**Auction Location: Ocean County Parking Garage, 3rd Level
101 Hooper Ave, Toms River, NJ 08753**

Property Previews 12 to 2 PM:

Friday, November 13th

Wednesday, November 18th

Farm 1: 156 W Colliers Mill Road, Plumsted Twp (New Egypt), NJ 08533



888-299-1438
MAXSPANN.COM
SERVING THE NATION

OFFICES: NEW YORK - NEW JERSEY - FLORIDA



High Visibility Location for a Farm Stand