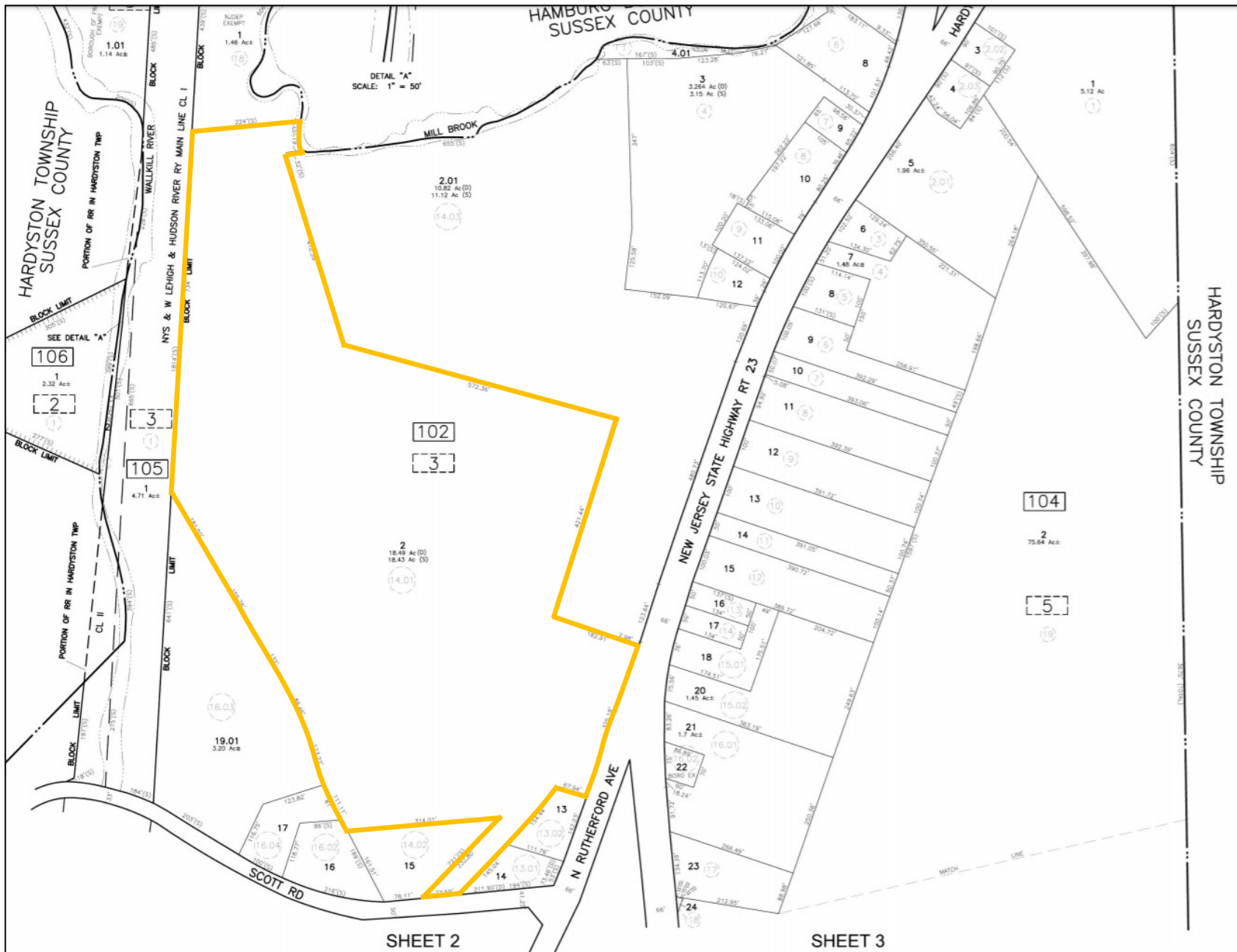
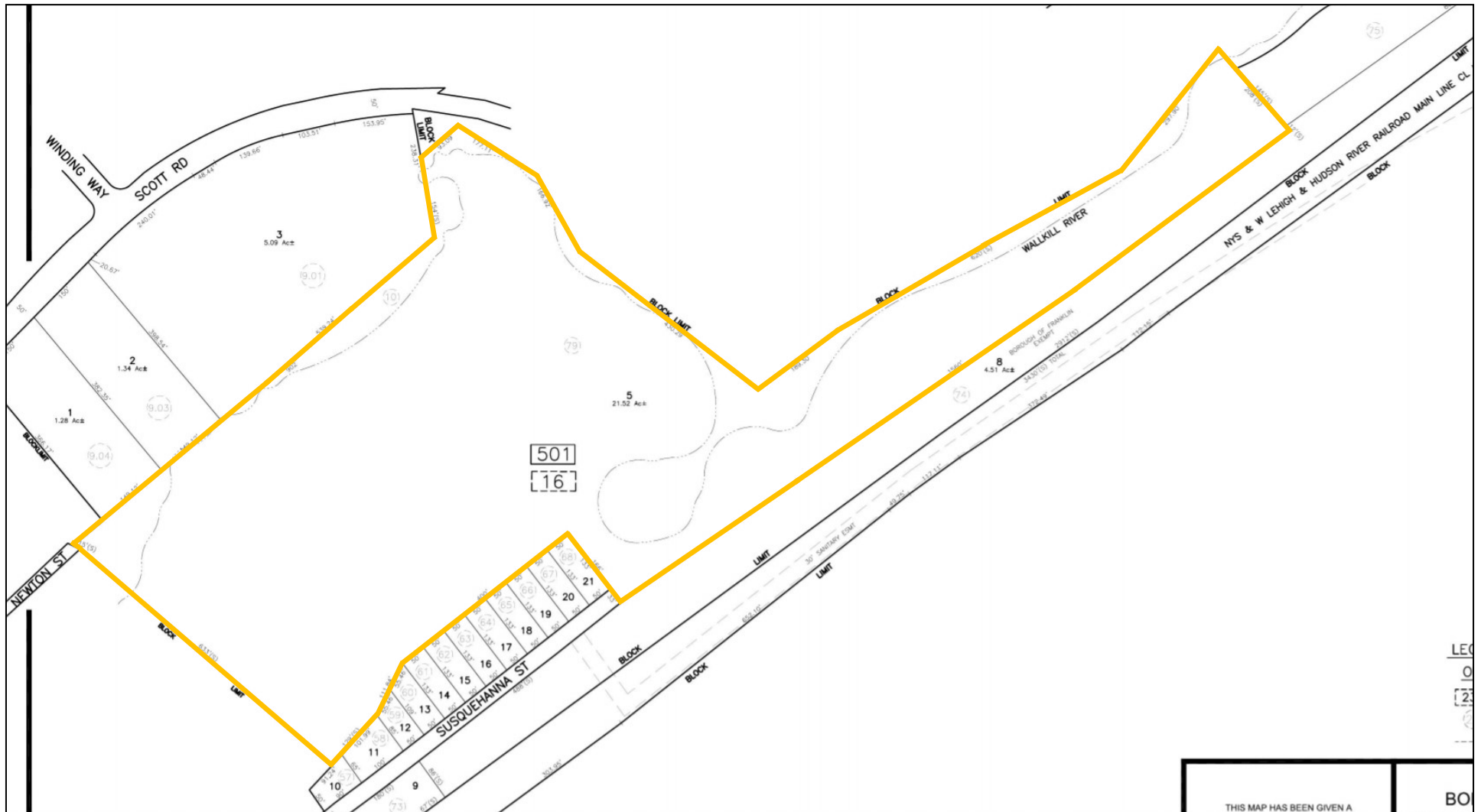


359 Scott Road, Franklin Borough, Sussex Co, NJ  
Block 102, Lot 2, Approximately 18.49 +/- Acres  
R-1 Zone

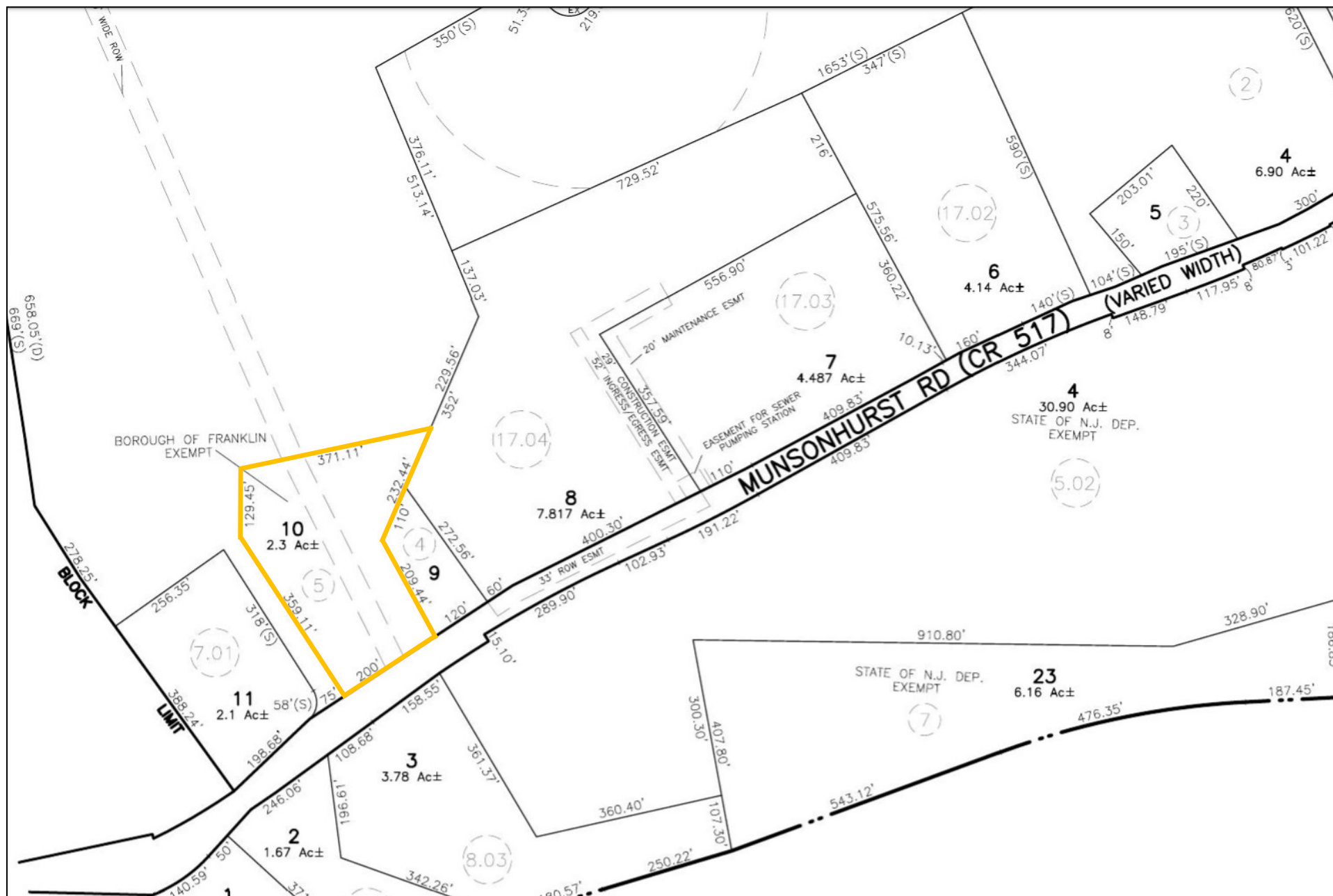




25-A Susquehanna Street, Franklin Borough, Sussex Co, NJ  
Block 501, Lot 5, Approximately 19.30+/- Acres  
R-1 Zone



## R-1 Zone





[illegible]

The map displays a complex land survey with the following features:

- Parcel 1:** 12 Ac± TOTAL, located in the upper right.
- Parcel 2:** 6.90 Ac±, located in the center.
- Parcel 3:** 4.14 Ac±, located in the lower left.
- Parcel 4:** 30.90 Ac±, STATE OF N.J. DEP. EXEMPT, located in the lower center.
- Parcel 5:** 4.487 Ac±, located in the lower left.
- Parcel 6:** 4.487 Ac±, located in the lower left.
- Parcel 7:** 4.487 Ac±, located in the lower left.
- Parcel 8:** 4.487 Ac±, located in the lower left.
- Parcel 9:** 4.487 Ac±, located in the lower left.
- Parcel 10:** 4.487 Ac±, located in the lower left.
- Parcel 11:** 4.487 Ac±, located in the lower left.
- Parcel 12:** 4.487 Ac±, located in the lower left.
- Parcel 13:** 4.487 Ac±, located in the lower left.
- Parcel 14:** 4.487 Ac±, located in the lower left.
- Parcel 15:** 4.487 Ac±, located in the lower left.
- Parcel 16:** 4.487 Ac±, located in the lower left.
- Parcel 22:** 4 Ac±, STATE EXEMPTED, located in the lower right.

The map also includes a road labeled "MUNSONHURST RD (CR 517)" and a "CONSERVATION EASEMENT 10.108 Ac±". A yellow box highlights a specific area in the upper right corner. The map also shows a "BOROUGH OF FRA EXEMPT" area and a "20' DRAINAGE ESMT" area.



DETAIL "A"  
SCALE: 1" = 100'

CORK  
671'(S)

CORK HILL RD  
671'(S)  
662.02  
850'(S)  
750'(S)  
539'(S)  
540'

WALKILL RIVER

2602  
75

9  
76.81 Ac+/-

2603  
75

1  
1.14 Ac+/-

2  
1.11 Ac+/-

3  
1.11 Ac+/-

4  
1.11 Ac+/-

5  
1.11 Ac+/-

6  
1.11 Ac+/-

7  
1.11 Ac+/-

8  
1.11 Ac+/-

9  
1.11 Ac+/-

10  
1.11 Ac+/-

11  
1.11 Ac+/-

12  
1.11 Ac+/-

13  
1.11 Ac+/-

14  
1.11 Ac+/-

15  
1.11 Ac+/-

16  
1.11 Ac+/-

17  
1.11 Ac+/-

18  
1.11 Ac+/-

19  
1.11 Ac+/-

20  
1.11 Ac+/-

21  
1.11 Ac+/-

22  
1.11 Ac+/-

23  
1.11 Ac+/-

24  
1.11 Ac+/-

25  
1.11 Ac+/-

26  
1.11 Ac+/-

27  
1.11 Ac+/-

28  
1.11 Ac+/-

29  
1.11 Ac+/-

30  
1.11 Ac+/-

31  
1.11 Ac+/-

32  
1.11 Ac+/-

33  
1.11 Ac+/-

34  
1.11 Ac+/-

35  
1.11 Ac+/-

36  
1.11 Ac+/-

37  
1.11 Ac+/-

38  
1.11 Ac+/-

39  
1.11 Ac+/-

40  
1.11 Ac+/-

41  
1.11 Ac+/-

42  
1.11 Ac+/-

43  
1.11 Ac+/-

44  
1.11 Ac+/-

45  
1.11 Ac+/-

46  
1.11 Ac+/-

47  
1.11 Ac+/-

48  
1.11 Ac+/-

49  
1.11 Ac+/-

50  
1.11 Ac+/-

51  
1.11 Ac+/-

52  
1.11 Ac+/-

53  
1.11 Ac+/-

54  
1.11 Ac+/-

55  
1.11 Ac+/-

56  
1.11 Ac+/-

57  
1.11 Ac+/-

58  
1.11 Ac+/-

59  
1.11 Ac+/-

60  
1.11 Ac+/-

61  
1.11 Ac+/-

62  
1.11 Ac+/-

63  
1.11 Ac+/-

64  
1.11 Ac+/-

65  
1.11 Ac+/-

66  
1.11 Ac+/-

67  
1.11 Ac+/-

68  
1.11 Ac+/-

69  
1.11 Ac+/-

70  
1.11 Ac+/-

71  
1.11 Ac+/-

72  
1.11 Ac+/-

73  
1.11 Ac+/-

74  
1.11 Ac+/-

75  
1.11 Ac+/-

76  
1.11 Ac+/-

77  
1.11 Ac+/-

78  
1.11 Ac+/-

79  
1.11 Ac+/-

80  
1.11 Ac+/-

81  
1.11 Ac+/-

82  
1.11 Ac+/-

83  
1.11 Ac+/-

84  
1.11 Ac+/-

85  
1.11 Ac+/-

86  
1.11 Ac+/-

87  
1.11 Ac+/-

88  
1.11 Ac+/-

89  
1.11 Ac+/-

90  
1.11 Ac+/-

91  
1.11 Ac+/-

92  
1.11 Ac+/-

93  
1.11 Ac+/-

94  
1.11 Ac+/-

95  
1.11 Ac+/-

96  
1.11 Ac+/-

97  
1.11 Ac+/-

98  
1.11 Ac+/-

99  
1.11 Ac+/-

100  
1.11 Ac+/-

101  
1.11 Ac+/-

102  
1.11 Ac+/-

103  
1.11 Ac+/-

104  
1.11 Ac+/-

105  
1.11 Ac+/-

106  
1.11 Ac+/-

107  
1.11 Ac+/-

108  
1.11 Ac+/-

109  
1.11 Ac+/-

110  
1.11 Ac+/-

111  
1.11 Ac+/-

112  
1.11 Ac+/-

113  
1.11 Ac+/-

114  
1.11 Ac+/-

115  
1.11 Ac+/-

116  
1.11 Ac+/-

117  
1.11 Ac+/-

118  
1.11 Ac+/-

119  
1.11 Ac+/-

120  
1.11 Ac+/-

121  
1.11 Ac+/-

122  
1.11 Ac+/-

123  
1.11 Ac+/-

124  
1.11 Ac+/-

125  
1.11 Ac+/-

126  
1.11 Ac+/-

127  
1.11 Ac+/-

128  
1.11 Ac+/-

129  
1.11 Ac+/-

130  
1.11 Ac+/-

131  
1.11 Ac+/-

132  
1.11 Ac+/-

133  
1.11 Ac+/-

134  
1.11 Ac+/-

135  
1.11 Ac+/-

136  
1.11 Ac+/-

137  
1.11 Ac+/-

138  
1.11 Ac+/-

139  
1.11 Ac+/-

140  
1.11 Ac+/-

141  
1.11 Ac+/-

142  
1.11 Ac+/-

143  
1.11 Ac+/-

144  
1.11 Ac+/-

145  
1.11 Ac+/-

146  
1.11 Ac+/-

147  
1.11 Ac+/-

148  
1.11 Ac+/-

149  
1.11 Ac+/-

150  
1.11 Ac+/-

151  
1.11 Ac+/-

152  
1.11 Ac+/-

153  
1.11 Ac+/-

154  
1.11 Ac+/-

155  
1.11 Ac+/-

156  
1.11 Ac+/-

157  
1.11 Ac+/-

158  
1.11 Ac+/-

159  
1.11 Ac+/-

160  
1.11 Ac+/-

161  
1.11 Ac+/-

162  
1.11 Ac+/-

163  
1.11 Ac+/-

164  
1.11 Ac+/-

165  
1.11 Ac+/-

166  
1.11 Ac+/-

167  
1.11 Ac+/-

168  
1.11 Ac+/-

169  
1.11 Ac+/-

170  
1.11 Ac+/-

171  
1.11 Ac+/-

172  
1.11 Ac+/-

173  
1.11 Ac+/-

174  
1.11 Ac+/-

175  
1.11 Ac+/-

176  
1.11 Ac+/-

177  
1.11 Ac+/-

178  
1.11 Ac+/-

179  
1.11 Ac+/-

180  
1.11 Ac+/-

181  
1.11 Ac+/-

182  
1.11 Ac+/-

183  
1.11 Ac+/-

184  
1.11 Ac+/-

185  
1.11 Ac+/-

186  
1.11 Ac+/-

187  
1.11 Ac+/-

188  
1.11 Ac+/-

189  
1.11 Ac+/-

190  
1.11 Ac+/-

191  
1.11 Ac+/-

192  
1.11 Ac+/-

193  
1.11 Ac+/-

194  
1.11 Ac+/-

195  
1.11 Ac+/-

196  
1.11 Ac+/-

197  
1.11 Ac+/-

198  
1.11 Ac+/-

199  
1.11 Ac+/-

200  
1.11 Ac+/-

201  
1.11 Ac+/-

202  
1.11 Ac+/-

203  
1.11 Ac+/-

204  
1.11 Ac+/-

205  
1.11 Ac+/-

206  
1.11 Ac+/-

207  
1.11 Ac+/-

208  
1.11 Ac+/-

209  
1.11 Ac+/-

210  
1.11 Ac+/-

211  
1.11 Ac+/-

212  
1.11 Ac+/-

213  
1.11 Ac+/-

214  
1.11 Ac+/-

215  
1.11 Ac+/-

216  
1.11 Ac+/-

217  
1.11 Ac+/-

218  
1.11 Ac+/-

OGDENSBURG BOROUGH  
RUSSEY COUNTY



**SHEET 21**

**39**  
**1901**  
27.02  
37.29 Ac+/-

**1**  
10.50 Ac+/-  
30'(S) PUMP STATION ESMT

**2**  
1.2 Ac+/-  
(29.05)

**3**  
1.83 Ac+/-  
(29.04)

**4**  
(29.03)

**5**  
(26.01)

**6**  
(26.02)

**7**  
(26.03)

**8**  
(26.04)

**9**  
(26.05)

**10**  
(26.06)

**11**  
(26.07)

**12**  
(26.08)

**13**  
(26.09)

**14**  
(26.10)

**15**  
(26.11)

**16**  
(26.12)

**17**  
(26.13)

**18**  
(26.14)

**19**  
(26.15)

**20**  
(26.16)

**21**  
(26.17)

**22**  
(26.18)

**23**  
(26.19)

**24**  
(26.20)

**25**  
1.17 Ac+/-  
15' DRAINAGE ESMT

**26**  
BORO. EX. 20'

**27**  
(29.01)

**28**  
(29.02)

**29**  
1.37 Ac+/-  
(29.03)

**30**  
5.30 Ac+/-  
BOROUGH OF FRANKLIN EXEMPT

**31**  
(29.04)

**32**  
(29.05)

**33**  
(29.06)

**34**  
(29.07)

**35**  
(29.08)

**36**  
(29.09)

**37**  
(29.10)

**38**  
(29.11)

**39**  
(29.12)

**40**  
(29.13)

**41**  
(29.14)

**42**  
(29.15)

**43**  
(29.16)

**44**  
(29.17)

**45**  
(29.18)

**46**  
(29.19)

**47**  
(29.20)

**48**  
(29.21)

**49**  
(29.22)

**50**  
(29.23)

**51**  
(29.24)

**52**  
(29.25)

**53**  
(29.26)

**54**  
(29.27)

**55**  
(29.28)

**56**  
(29.29)

**57**  
(29.30)

**58**  
(29.31)

**59**  
(29.32)

**60**  
(29.33)

**61**  
(29.34)

**62**  
(29.35)

**63**  
(29.36)

**64**  
(29.37)

**65**  
(29.38)

**66**  
(29.39)

**67**  
(29.40)

**68**  
(29.41)

**69**  
(29.42)

**70**  
(29.43)

**71**  
(29.44)

**72**  
(29.45)

**73**  
(29.46)

**74**  
(29.47)

**75**  
(29.48)

**76**  
(29.49)

**77**  
(29.50)

**78**  
(29.51)

**79**  
(29.52)

**80**  
(29.53)

**81**  
(29.54)

**82**  
(29.55)

**83**  
(29.56)

**84**  
(29.57)

**85**  
(29.58)

**86**  
(29.59)

**87**  
(29.60)

**88**  
(29.61)

**89**  
(29.62)

**90**  
(29.63)

**91**  
(29.64)

**92**  
(29.65)

**93**  
(29.66)

**94**  
(29.67)

**95**  
(29.68)

**96**  
(29.69)

**97**  
(29.70)

**98**  
(29.71)

**99**  
(29.72)

**100**  
(29.73)

**101**  
(29.74)

**102**  
(29.75)

**103**  
(29.76)

**104**  
(29.77)

**105**  
(29.78)

**106**  
(29.79)

**107**  
(29.80)

**108**  
(29.81)

**109**  
(29.82)

**110**  
(29.83)

**111**  
(29.84)

**112**  
(29.85)

**113**  
(29.86)

**114**  
(29.87)

**115**  
(29.88)

**116**  
(29.89)

**117**  
(29.90)

**118**  
(29.91)

**119**  
(29.92)

**120**  
(29.93)

**121**  
(29.94)

**122**  
(29.95)

**123**  
(29.96)

**124**  
(29.97)

**125**  
(29.98)

**126**  
(29.99)

**127**  
(30.00)

**128**  
(30.01)

**129**  
(30.02)

**130**  
(30.03)

**131**  
(30.04)

**132**  
(30.05)

**133**  
(30.06)

**134**  
(30.07)

**135**  
(30.08)

**136**  
(30.09)

**137**  
(30.10)

**138**  
(30.11)

**139**  
(30.12)

**140**  
(30.13)

**141**  
(30.14)

**142**  
(30.15)

**143**  
(30.16)

**144**  
(30.17)

**145**  
(30.18)

**146**  
(30.19)

**147**  
(30.20)

**148**  
(30.21)

**149**  
(30.22)

**150**  
(30.23)

**151**  
(30.24)

**152**  
(30.25)

**153**  
(30.26)

**154**  
(30.27)

**155**  
(30.28)

**156**  
(30.29)

**157**  
(30.30)

**158**  
(30.31)

**159**  
(30.32)

**160**  
(30.33)

**161**  
(30.34)

**162**  
(30.35)

**163**  
(30.36)

**164**  
(30.37)

**165**  
(30.38)

**166**  
(30.39)

**167**  
(30.40)

**168**  
(30.41)

**169**  
(30.42)

**170**  
(30.43)

**171**  
(30.44)

**172**  
(30.45)

**173**  
(30.46)

**174**  
(30.47)

**175**  
(30.48)

**176**  
(30.49)

**177**  
(30.50)

**178**  
(30.51)

**179**  
(30.52)

**180**  
(30.53

10.50 Ac+/-

30' (S) PUMP STATION ESMT

1.2 Ac+/-

1.83 Ac+/-

27.01

19.62 Ac+/-

5.30 Ac+/-

BOROUGH OF FRANKLIN EXEMPT

1.37 Ac+/-

27.02

37.29 Ac+/-

39

1901

27.01

1.17 Ac+/-

15' DRAINAGE ESMT

MAPLE RD

WILDCAT RD

THIS MAP HAS BEEN GIVEN A FORMAL CERTIFICATION BY THE DIVISION OF TAXATION ON SEPTEMBER 26, 2008, SIGNED BY SANTO C. DIDONATO, CTA AND ASSIGNED SERIAL NUMBER 92

51-A Sterling Street, Franklin Borough, Sussex Co, NJ  
Block 601, Lot 34, Approximately 0.04+/- Acres  
R-4 Zone

