

N 79-07 E  
216.35

S 85-48 E  
103.80

492.25

S 1-19 E

WILLIS

442.48

3.75 ACRES

WILLIS

N 3-34 E

30' EASEMENT FOR  
FUTURE ENTRANCE

A-13-86  
RS 1508-89

CHORD S 78-06 W

SCALE 1"=80'

QUAINTANCE SUBDIV.  
TRACT LINE

692.0'

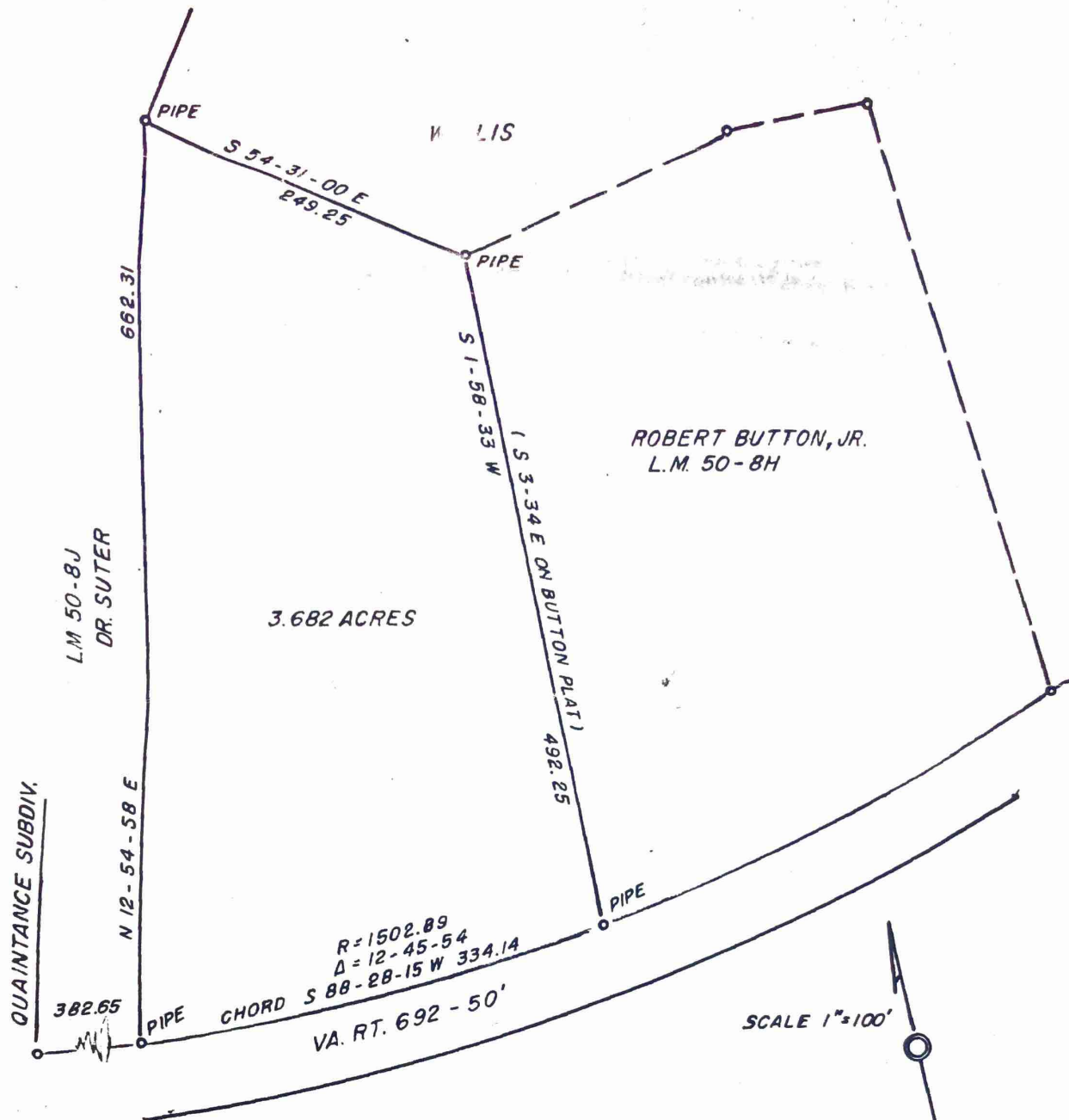
RT. 692 - OLD ORANGE RD. - 50'

LOT FROM THE E. T. WILLIS, JR. TRACT  
RT. 692, OLD ORANGE RD.  
CEDAR MT. DIST., CULPEPER CO., VA.  
SEPT. 28, 1978



FINAL PLAN  
APPROVED BY  
*Mary L. Mullins* 11-13-78  
PLANNING COMMISSION  
FAILURE TO BE IN ACCORDANCE WITH THE TERMS  
OF APPROVAL DOES NOT CONSTITUTE  
APPROVAL OF LAND AND...

HOUSE, WELL AND DRAINFIELD LOCATIONS SHOWN  
ON INFORMATION PLAT DATED 9-28-78 ON FILE  
AT CULPEPER COUNTY PLANNING DEPARTMENT.  
DEVIATIONS FROM SAID PLAT REQUIRE HEALTH  
DEPARTMENT APPROVAL.



LOT FROM E. T. WILLIS, JR. TRACT  
 VA. RT. 692, OLD ORANGE RD.  
 CULPEPER CO., VA.  
 OCT. 6, 1986

