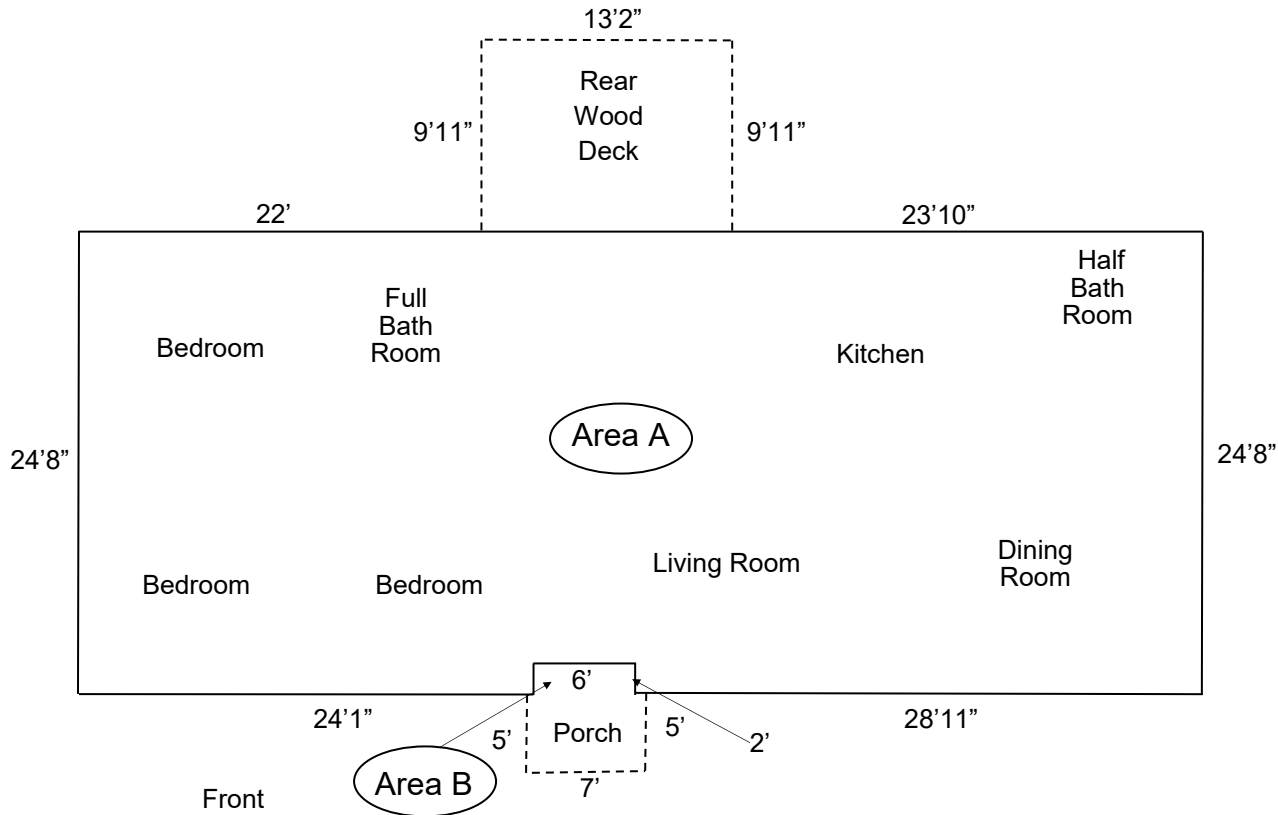


Approximate Square Footage

1424 Garvey Dr.



Approx. Square Footage

Area A

59'

X 24.66'

1,454.94 sq. ft.

Area B

6'

X 2'

12 sq. ft.

Area A 1,454 sq. ft.

Area B - 12 sq. ft.

Total 1,442 sq. ft.

Approximate

PVA Lists 1,475 sq. ft.

House has a full basement which is partially finished and a detached 2 car garage.

The 2 car garage is approx. 26' x 22'5".

NOT TO SCALE

ALL MEASUREMENTS

ARE APPROXIMATE,

MAY HAVE BEEN

ROUNDED, AND ARE

NOT GUARANTEED.