



# 11105 Kilrenny Ct.



**Concrete Patio is approx. 15' x 18".  
The wood deck needs replacement.**



**The open area behind the driveway is a  
part of the Douglas Hills Common Space.**



**Front Foyer approx. 6' x 7'10".  
Brass light fixture, crown  
molding, black stone linoleum  
flooring, French front doors,  
double doorways into living  
room and the hallway.**

**Living Room approx. 15'10" x 13'7", triple front windows, crown molding, carpeted, double doorway leading in from the front foyer, and double doorway into the formal dining room.**



**Formal Dining Room approx. 11'7" x 11'7", single front window, candlestick chandelier with teardrop crystals, crown molding, chair rail, carpeted with a double doorway leading in from the living room, and a single door into the eat-in kitchen.**



**All room measurements shown are  
approximate and may have been rounded.**

**Den approx. 19'1" x 13'4", brick fireplace with brick hearth, exposed ceiling beams, crown molding, built-in bookshelf with lower double doors, French doors leading out onto the rear, concrete patio, and louvered French doors into kitchen. This room and the eat-in kitchen have Alloc laminated wood flooring.**



**The roof was leaking and caused a small area of ceiling damage. The roof received a temporary repair which has stopped the leak. Chimney has a water leak and needs repair.**



**"L" shaped Eat-In Kitchen approx. 14' 10" x 13'5" & 3'5" x 3'8". White cabinetry. Double side windows (Note: The large stained glass will be sold separately with the personal property), 2 step-in pantry closets, recessed lighting, a candlestick light fixture over the kitchen table area, and crown molding.**

**Alloc laminated wood flooring.**

**The GE refrigerator, GE electric range, and the GE dishwasher will remain with the home. Side door into the house, louvered french doors into the den, single door into the formal dining room, the door to the basement is next to the door to the garage.**



**All room measurements shown are approximate and may have been rounded.**

**Master Bedroom approx. 18'1" x 11'11", with a full bathroom, walk-in closet off of the bathroom, single side and rear windows, carpeted.**



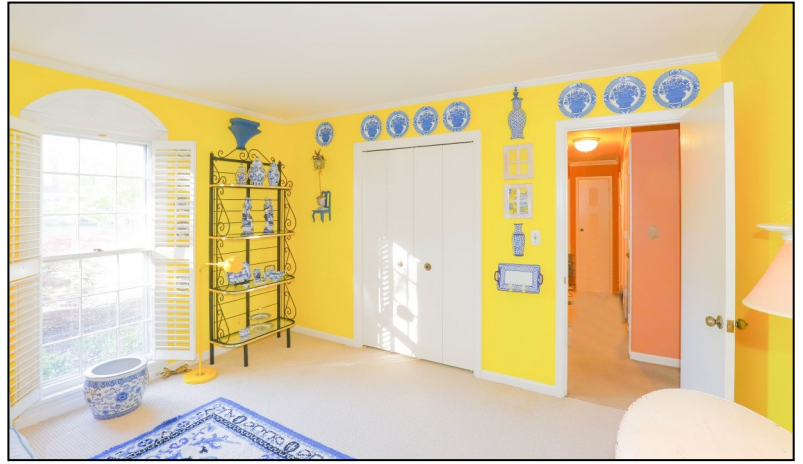
**Master Full Bathroom approx. 4'5" x 11'1", large vanity with large mirror, crown molding, ceramic tile tub enclosure, carpeted and ceramic tile flooring.**



**Master Bedroom Walk-In Closet approx. 7'4" x 6'1" carpeted, with laundry chute to basement.**

**All room measurements shown are approximate and may have been rounded.**

**Front Corner Bedroom approx. 11'7" x 13' plus the double closet, single front window with plantation style shutters, crown molding, carpeted.**



**Front Middle Bedroom approx. 13'5" x 9'10" plus the double closet, triple front windows, crown molding, carpeted.**



**Full Bathroom approx. 7'4" x 6'10", large vanity with oval mirror, ceramic tile tub enclosure, ceramic tile flooring.**



**Main Hallway is "L" Shaped approx. 19'10" x 13'4" & 3' x 4'8", with a coat closet near front foyer and a double closet near the bedrooms, crown molding, carpeted.**

**All room measurements shown are approximate and may have been rounded.**



**Basement Finished Area**  
Large Recreational Room  
approx. 30' x 12'11",  
older pool table with 2 plywood top  
pieces remain with the house,  
Family Room approx. 15'4" x 13'3",  
Office approx. 12' x 11'11".  
All finished areas are carpeted.  
There are also 2 closets.



**Chimney has a water leak and needs repair. This leak has caused damage to one area of the basement ceiling and wall near the pool table and close the doors into the unfinished area. There does appear to be some mold on the ceiling.**

**The full basement has approx. 1,874 total sq. ft. with approx. 1,020 finished sq. ft. and approx. 854 unfinished sq. ft.**

**All room measurements shown are approximate and may have been rounded.**



**Basement Unfinished Area**  
approx. 31'4" x 27'3"  
Amana washer, GE electric dryer,  
older Kenmore dryer, 3 storage drawer units  
with counter top all remain with the house.



**The full basement has approx. 1,874 total sq. ft. with approx. 1,020 finished sq. ft. and approx. 854 unfinished sq. ft.**

**All room measurements shown are approximate and may have been rounded.**

The attached 2 car finished garage is approximately 19'6" x 22'9". The overhead door has an approx. 15'11" wide opening and an approx. 6'8" height, and an older Sears garage door opener. The garage has a side walk-in door and a door leading into the eat-in kitchen. The built-in shelving and the plywood ramp (shown below) specifically built for the door into the kitchen, will remain with the house.



All room measurements shown are approximate and may have been rounded.





**Furnace & Central Air  
Installed  
March 2019!**



**Carrier gas furnace and central air were installed by Bryant Heating & Cooling on March 29, 2019.**



**50 gallon, gas John Wood water heater. Date written on water heater is 7-21-2004.**



**The house does have a sump pump, located in the unfinished area of the basement, Inspection Sticker dated 9-9-97. And a utility sink.**

**Electrical breaker box is located in the unfinished area of the basement. Inspection Sticker is dated 5-28-71.**



# House Attic



# Garage Attic

