

1810 Kline Ct.





“L” Shaped Front Foyer approx. 6’ 8” x 13’9”. Front French doors. Two louvered door coat closets. Double doorway into living room, single doorway into den, and single doorway to hall. Stone flooring.



Living Room approx. 21’10” x 13’8”. Large triple front windows, double doorway leading in from the front foyer, and triple doorway into the formal dining room. Carpeted.



Formal Dining Room approx. 13’7” x 13’6”. Chair rail, double side windows, chandelier, triple doorway leading in from the living room, French louvered doors into the den, and a pocket door into the eat-in kitchen. Carpeted.

All room measurements shown are approximate and may have been rounded.



Den approx. 21'7" x 12'8". Featuring brick fireplace with gas, a 10'10" long built-in bookshelf with lockable double glass doors, and 3 lower louvered double door storage areas. Plus, French doors with sidelights leading out onto the rear screened-in back porch, pocket door into the eat-in kitchen, French louvered doors into the dining room, single doorway to the hall and front foyer. Carpeted.

All room measurements shown are approximate and may have been rounded.



Large Eat-In Kitchen approx. 22' x 12'. White cabinetry, double door and single door pantry closets, chair rail, double windows above sink, single window above stairway to basement. Pocket door into the dining room, pocket door into the den, door to the garage, a door onto the screened-in back porch, and access to the half bathroom. The kitchen also features GE Monogram electric double ovens, GE electric range top, GE range hood, and Frigidaire dishwasher.

All room measurements shown are approximate and may have been rounded.



**Half Bathroom approx. 4'10" x 4'3".
White vanity with cultured marble
top and ceramic tile flooring.
Located just inside the back door at
the top of the stairs to the basement.**



**"L" Shaped Hallway approx.
19'4" x 3'5" and 12' x 3'5".
Featuring a built-in double door
linen cabinet with 3 lower storage
drawers and a small laundry
chute to basement.
New carpet.**



**Full Bathroom off the hallway approx. 8' x 7'8" including the linen closet. Large white
double sink vanity with marble top and 4'7" mirror. Ceramic tile tub enclosure and flooring.**



**Master Bedroom approx. 17'6" x 14'1"
plus 2 double door closets.
Full master bathroom. 2 side
and 2 rear windows. New carpet.**



**Master Full Bathroom
approx. 8'2" x 5'. White vanity with
ceramic tile tub enclosure and flooring.
Single rear window.**



**All room measurements shown are
approximate and may have been rounded.**



Middle Side Bedroom approx. 11'4" x 11'9", plus the large double closet. Oak Hardwood Flooring. Large double closet, double side windows, and washer & dryer hook-ups (the original washer and dryer hook-ups are still in the basement).



Front Corner Bedroom approx. 15'2" x 11'9", plus the 2 double closets. Oak Hardwood Flooring. Double front windows.



Front Middle Bedroom approx. 12'6" x 11'9", plus the double closet. Oak Hardwood Flooring. Double front windows.



Screened-in Back Porch approx. 20' x 11'. French doors into the den, door into the eat-in kitchen, and outdoor carpet on concrete floor.



The attached 2 car finished garage is approx. 20' x 22'. The overhead door has a Lift Master opener and has an approx. 15'11" wide opening and an approx. 7' height. There is a small storage closet next to the door to the kitchen. The garage also has a rear window and a side walk-in door.

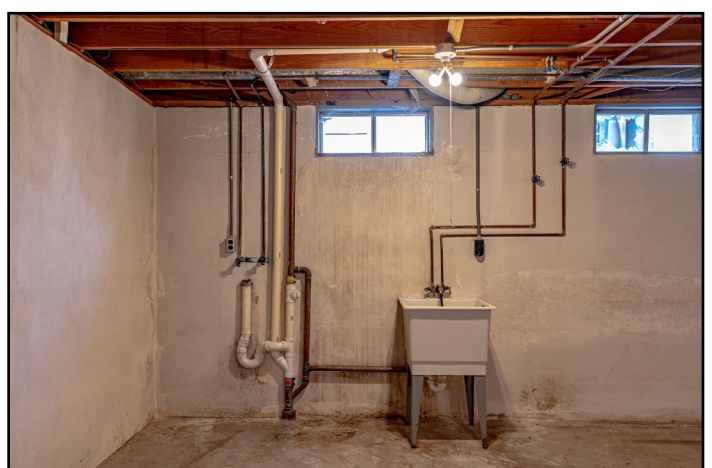
All room measurements shown are approximate and may have been rounded.

The basement has approx. 1,769 total sq. ft. with approx. 618 finished sq. ft. and approx. 1,151 unfinished sq. ft. The house also has 2 craw spaces.



Basement Finished Area is approx. 22'6" x 27' with paneled walls, 2 smaller double hung windows, and a storage closet next to and underneath the stairway.

All room measurements shown are approximate and may have been rounded.



Basement Unfinished Area is approx. 38'9" x 29'2" & 27'2", this area has the original washer and electric dryer hook-ups and a utility sink. One of the 3 small side windows needs a broken glass replaced.

All room measurements shown are approximate and may have been rounded.



York gas furnace.

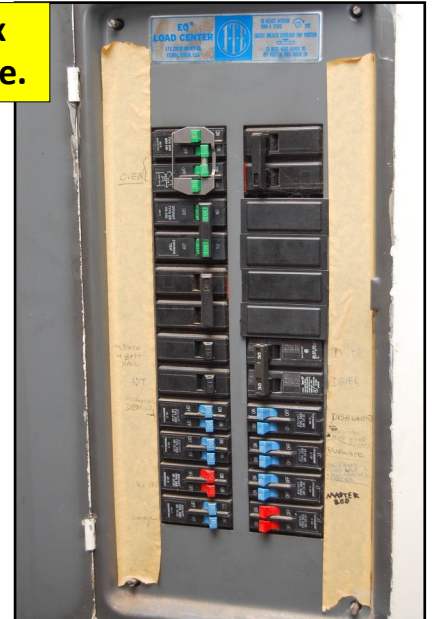


Amana Central Air Unit. There is a sticker on the furnace that indicates that the A/C unit and a new coil were installed on 8-16-16 by Tom Drexler Plumbing, Air & Electric.



A.O. Smith 50 gallon, gas water heater.

Electrical breaker box is located in the garage.



The house appears to be wired for an alarm system. It is not active at this time. The ADT control panel is located in the hall.



Roof looks good! We do not have any information on the exact age.

House Attic

