

N 79-07 E
216.35

S 85-48 E
103.80

492.25

S 1-19 E

WILLIS

442.48

3.75 ACRES

30' EASEMENT FOR
FUTURE ENTRANCE

N 3-34 E

SCALE 1"=80'

QUAINTANCE SUBDIV.
TRACT LINE

692.0'

CHORD S 78-06 W

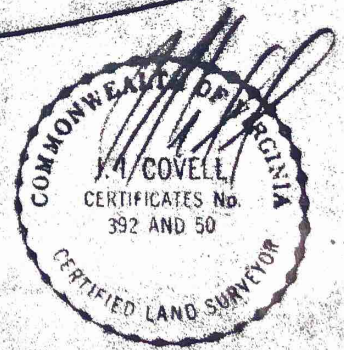
A-13-86
RS 1508-89

364.72

50'

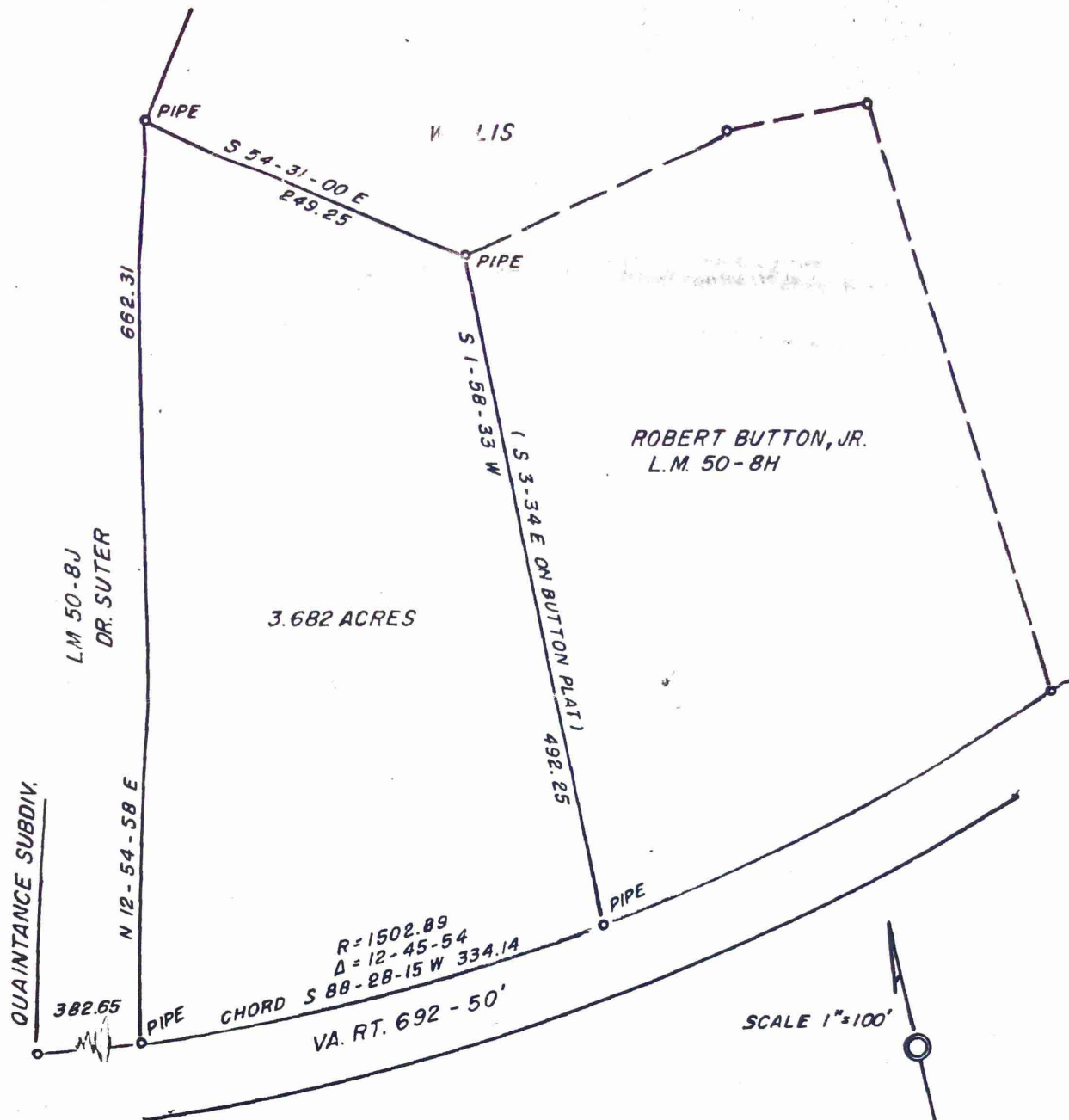
RT. 692 - OLD ORANGE RD. - 50'

LOT FROM THE E. T. WILLIS, JR. TRACT
RT. 692, OLD ORANGE RD.
CEDAR MT. DIST., CULPEPER CO., VA.
SEPT. 28, 1978



FINAL PLAN
APPROVED BY
Mary L. Mullins 11-13-78
PLANNING COMMISSION
FAILURE TO BE IN ACCORDANCE WITH THE TERMS
OF APPROVAL DOES NOT CONSTITUTE
APPROVAL OF LAND AND...

HOUSE, WELL AND DRAINFIELD LOCATIONS SHOWN
ON INFORMATION PLAT DATED 9-28-78 ON FILE
AT CULPEPER COUNTY PLANNING DEPARTMENT.
DEVIATIONS FROM SAID PLAT REQUIRE HEALTH
DEPARTMENT APPROVAL.



LOT FROM E. T. WILLIS, JR. TRACT
 VA. RT. 692, OLD ORANGE RD.
 CULPEPER CO., VA.
 OCT. 6, 1986

