

Magnetic
Nov. 17, 1965

Eugene W. Aylor
land
A stake 7 ft. N.W. of a location on a ridge

Charles W. Aylor parcel

J a stake with a rock around it arranged in a circle of loose rocks

Casper Hawkins land

N. 51 1/2° W. 261'
N. 14° W. 297'
a stake on a ridge #.

43.342 a.
More or less

stake 3 ft. N.W. of a chest oak

S. 24 1/2° W. 462'

N.W. of a double maple

This plat represents a survey of a parcel of land owned by Charles W. Aylor. This land is a part of the described in D. B. 84, p. 84; D. B. 41, p. 110; D. B. 28, p. 372, and is located in "House" hollow about 7 miles N.W. of Novum, Madison County, Virginia.

Chas. W. Aylor
D.B. 84 p. 84; D.B. 41, p. 110; D.B. 28, p. 372

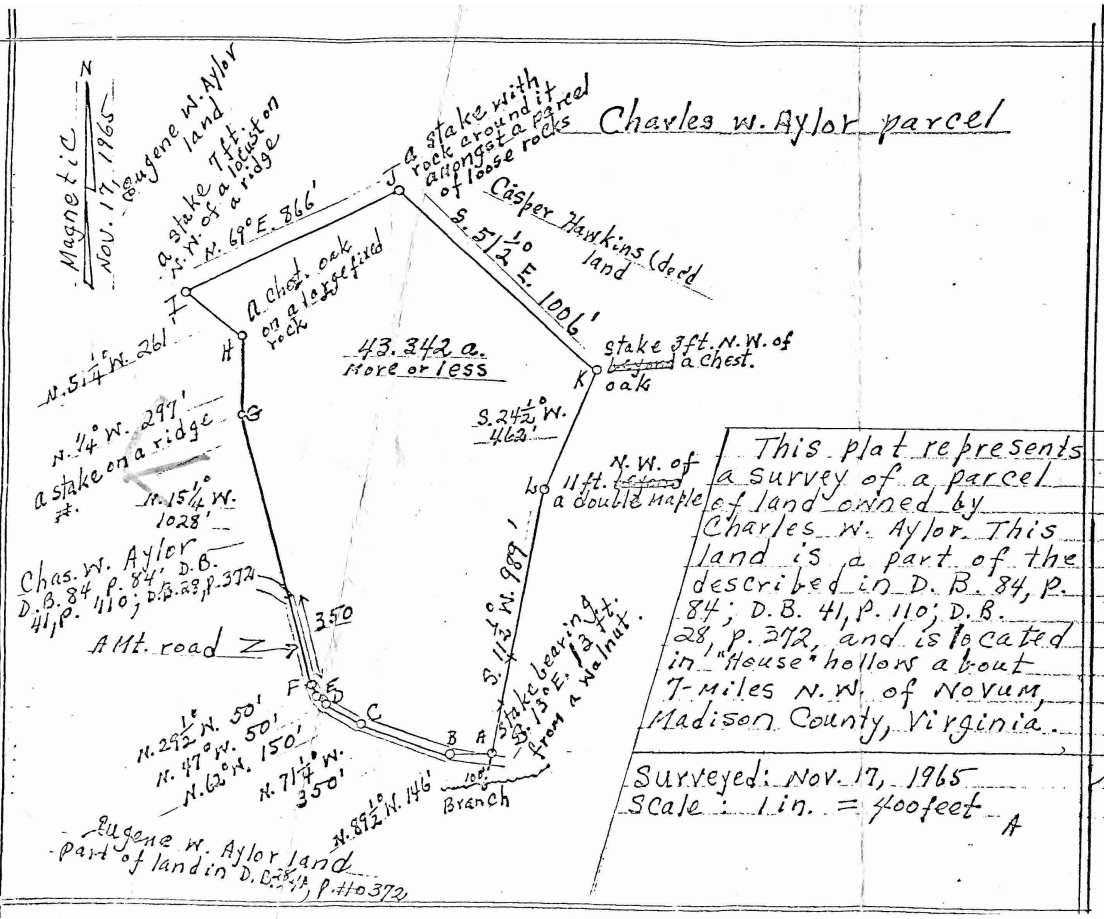
A Mt. road

N. 29 1/2° W. 50'
N. 47° W. 50'
N. 62° W. 150'
N. 71 1/4° W. 350'

S. 11 1/2° N. 989'
A stake bearing 100 ft. from a Walnut Branch

Eugene W. Aylor land
part of land in D. B. 84, p. 110; D. B. 28, p. 372

Surveyed: Nov. 17, 1965
Scale: 1 in. = 400 feet - A



MADISON
COUNTY, VA.
Book 227

BOUNDARY SURVEY
C.W. AYLOR PROPERTY
ROBERTSON DISTRICT
MADISON COUNTY, VIRGINIA

By
MILTON TERRY ESTES
CERTIFIED LAND SURVEYOR
ORANGE AND MADISON, VIRGINIA
SHEET 1 OF 1

S.W. 1/4 SEC 300 JUNE 23, 1971

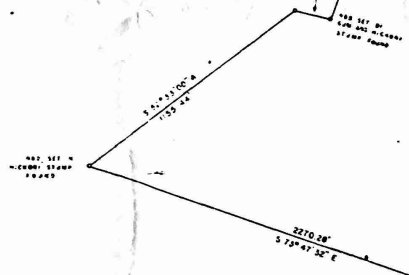
C.V. SMITH
78 9 PG 522

RECT 109me 535

R C AYLOR
WB 17 PG 557

EUGENEL PULLIAN
78 84 PG 84

101.483 AC



R. C. AYLOR
WB 17 PG 557

R.C. AYLOR
WB 17 PG 557



WITNESSED IN THE OFFICE OF THE CLERK OF THE CIRCUIT COURT
FOR THE COUNTY OF MADISON, THIS 23 DAY OF JUNE
1971, THE FOREGOING INSTRUMENT BEING FIRST FILED, WHEREUPON
THE CERTIFICATE ANNEXED, ADMITTED TO FILE BY ME AT 9:30
O'CLOCK P.M., AFTER PAYMENT OF THE TAXES BY SECTION
8848 PERSONALLY OF \$25.00 AND ALSO PERSONALLY \$20.00
TRANSFER \$2.00, RECORDING \$2.00, PAY \$2.00

Milton T. Estes
DEPUTY CLERK